



CARLISLE YOUTH ZONE – THE BARE BONES

The purpose of this very short paper is simply to list the principles on which the Carlisle Youth Zone has been granted funding and on it will be developed and operated. More detailed information can be found in the longer paper '*Carlisle Youth Zone – A Summary*'.

Aims, Vision etc.

The Carlisle Youth Zone will be open to all children and young people aged 8-21 and up to 25 for those with disabilities and/or learning difficulties. It will serve the social, recreational and emotional needs of young people, particularly those facing some kind of disadvantage.

The Youth Zone will be open whenever schools are closed:

- i.e. 3pm – 10pm – Mon - Fri – Term Time
- 8am – 10pm – Mon – Fri – Holidays
- 9am – 10pm – Every Saturday and Sunday

Creating and maintaining a separate and very distinct identity will be very important.

The Youth Zone must be run on strong Youth Work principles:

- A voluntary relationship – young people attend because they want to.
- Young people feel ownership of the Youth Zone and play a part in running it.
- Young People only... never dual use!

How does it work?

The two most important things to get right are firstly the “feel” of the Youth Zone – its success or otherwise will be determined by how the young people perceive it; and secondly – the staff team... Can they achieve the right balance and atmosphere within the Youth Zone?

Core Offer

The simple, basic opportunity to attend the Youth Zone at any time that schools are closed, we call “**THE CORE OFFER**”.

What’s on offer?

The range of activities on offer will, to a certain extent, be determined by the young people. We will need a good balance of sporting and artistic activities remembering that friendship, talking, meeting, association, being safe are just as, if not more, important. We should see it as a success if some young people attend regularly and do nothing!

Who comes when?

8 year olds and 17 year olds just don't mix! The age range of 8-21 years is just too broad for everyone to attend the same sessions. As in Bolton, it might be appropriate for 8-12 year olds and 13yrs+ to attend at different times.

How much to attend?

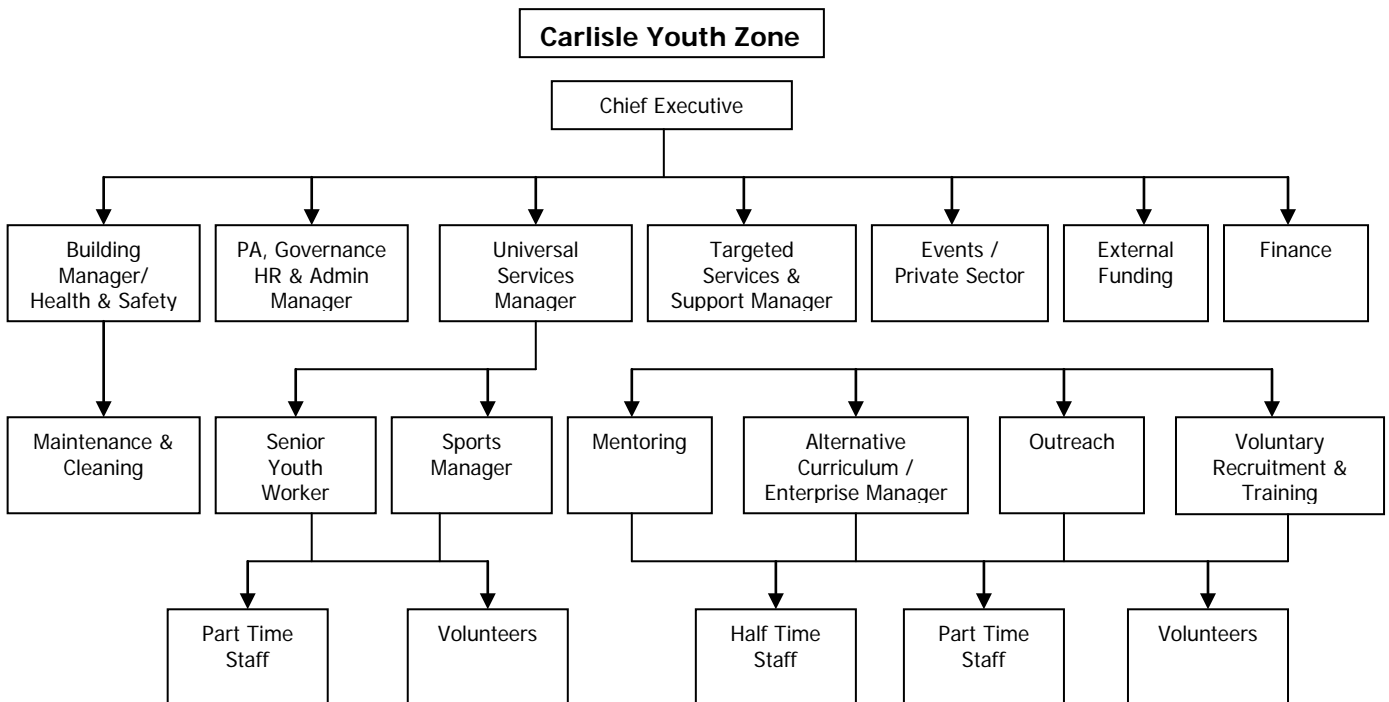
One of the keys to success is making it affordable to all, and so it is important to set a low nightly entrance fee – say 50 pence.

Holiday Offer

It is important that the Youth Zone opens for extended periods during the holidays – 8am-6pm (in addition to the normal evening sessions).

Staffing the Youth Zone

Good management, preparation and training of staff will be vital. The proposed staff structure is:



Carlisle Youth Zone Board

The Youth Zone will ultimately be owned and operated by a new charitable organisation. Its Board will have significant representation from the local private sector and include key officers from the project partners: Cumbria County Council, The Richard Rose Academy Trust and the University of Cumbria. The Board will also receive support from OnSide.

Operating costs

Raising annual operating costs of about £900,000 to £1m will be an inevitable challenge but the strength of the proposed financial model lies in a combination of the independent charitable status, the cross-sector contributions, a strong private sector/community involvement and large-scale volunteer strategy.

Funding Strategy

OnSide's preference for a sustainable co-financing package is:

Young People	10%
Private Sector	25%
Trusts & Grants	25%
Council	40%

Revenue funding for the early years of operation has been secured but not in these preferred proportions. However, it may be that when the different opportunities afforded by the Youth Zone are becoming more real, all partners will agree a similar package.

Volunteer Recruitment Process

At Bolton Lads & Girls Club, there are more than 300 active volunteers. They make the Club's long opening hours and nominal entry fees possible. With appropriate support, there is no reason why Carlisle cannot replicate such a highly successful volunteer recruitment, training and retention systems.

How the building will work

Co-located with the Academy, Carlisle Youth Zone will be unique but the co-location must not in any way detract from the need for the Youth Zone to have a very clear separate identity. Its future success depends on it being attractive to all young people across the city and further afield. The new building has been designed with this in mind so that it will have a strong visual presence that will establish the 'brand' of the Youth Zone and invite participation by all young people.

In addition to a new building, the Youth Zone will have exclusive use, outside Academy hours, of the adjoining sports hall and Astroturf.

Youth Zone & Academy Liaison

Despite their independence, it will obviously be vital for the Youth Zone and Academy to liaise closely at both strategic and operational levels.

Working with Partners

Effective partnership working will lie at the heart of successful operation of the Youth Zone. It is also an integral part of the project as proposed to and approved by the **myplace** programme.

Project Partners

The partnership between OnSide (representing the ultimate delivery organisation on a transitional basis), the Richard Rose Academy Trust, Cumbria County Council and the University of Cumbria involves various cash, 'in-kind' and operational contributions to the establishment, construction, development, successful operation and sustainment of the Youth Zone.

Stakeholders – Core Offer & Targeted Work

The Youth Zone will provide many opportunities for stakeholder involvement both in the core offer and the various targeted projects that it will deliver.

Examples of involvement in the core offer could be:

- Local junior football clubs/teams, junior boxing clubs, dance or theatre groups, art or music projects etc. may want to take advantage of the first-class facilities for training, development and even administration at the Youth Zone;
- There could be local voluntary (or other) groups for young people with disabilities and/or learning difficulties who could ideally relocate to and integrate with the core Youth Zone facilities and activities.

The list could go on and the exciting challenge is to explore the possibilities and opportunities whilst the Youth Zone is being built.

The following areas of targeted work have the potential for involvement of various referral agencies and delivery partners:

Type of Targeted Work	Potential Partners
Mentoring	<ul style="list-style-type: none"> • Social Care Agencies • Schools
Outreach / Detached	<ul style="list-style-type: none"> • Youth Support Service • Commissioned Youth Work Agencies • Voluntary Groups • Social Housing Organisations
Substance Misuse	<ul style="list-style-type: none"> • Drug and Alcohol Action Team • Youth Offending Service
Teenage Pregnancy	<ul style="list-style-type: none"> • Cumbria County Council • Primary Care Trust • Youth Offending Service
Healthy Lifestyles	<ul style="list-style-type: none"> • Primary Care Trust • Healthy Schools
Sexual Health	<ul style="list-style-type: none"> • Primary Care Trust
Crime and Disorder	<ul style="list-style-type: none"> • Crime and Disorder Reduction Partnership • Police • Community Safety Teams • Youth Offending Service
Disabled Young People	<ul style="list-style-type: none"> • Social Care Agencies • Special Schools • Voluntary Groups

Stakeholders - Daytime/Term-Time Targeted Work

There will be opportunities for a range of targeted work during the day in term-time, with referral or delivery partners and agencies wishing to use the world class facilities.

Examples of this type of activity and potential stakeholders could be:

Type of Daytime / Term-time work	Potential Partners
<ul style="list-style-type: none"> ➤ 'Narrowing the Gap' 'Raising Aspiration' activity ➤ (to address a shortfall in young people's attainment and achievement) ➤ Alternative Curriculum Work ➤ Experiential learning opportunities 	<ul style="list-style-type: none"> • Academies • Partner Schools • Cumbria County Council Education • Cumbria County Council Education Welfare • Connexions • Special Schools
Targeted Work with 16+	<ul style="list-style-type: none"> • (See 'Targeted Work' Partners above)
Other Institution's off-site learning	<ul style="list-style-type: none"> • Carlisle College • University of Cumbria • Special Schools

The Role of OnSide – A Reminder

OnSide North West is a charitable organisation established for the sole purpose of bringing together the public and private sectors across the North West to develop strong local partnerships to build new, world-class, town and city centre facilities for young people.

OnSide does not and will not operate these new youth facilities itself. It is a transitional organisation and after helping local partnerships to:

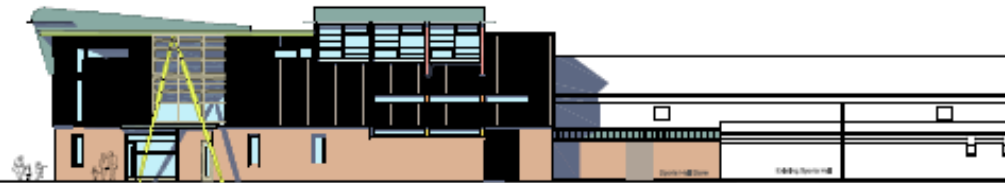
- source funding,
- design, build and equip world-class facilities,
- establish robust, sustainable delivery organisations,
- recruit and train staff and volunteers, and
- complete 12 months successful operation

we will withdraw from each individual project (whilst remaining available, on a consultancy basis, for future advice and support).

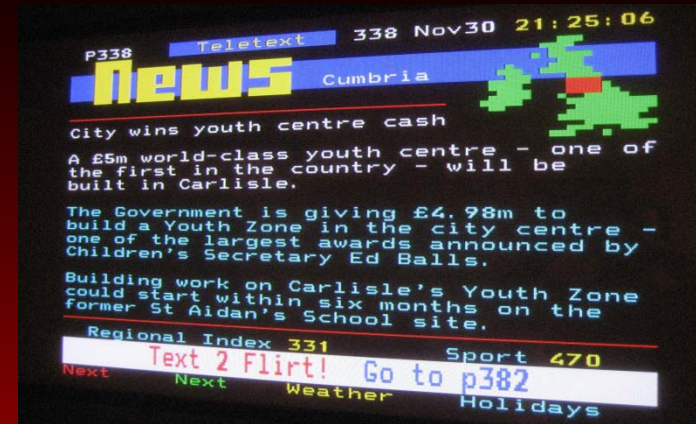
Although much of what OnSide advises is based on the success of Bolton Lads & Girls Club, we are not franchising a Bolton model. There will be consistent features but each project will be different, responding to local needs and constraints. Carlisle Youth Zone will be unique!

For more detail on the OnSide offer and how it is delivered please see our booklet *Investing in Young People – Investing in the Future* or visit our website at www.onsidenorthwest.org.

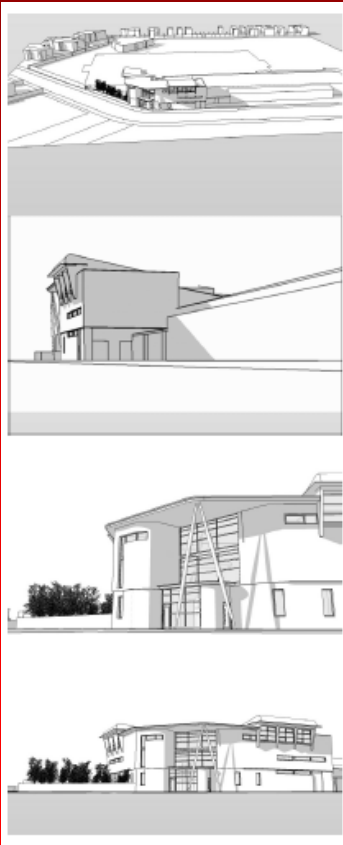
Create a World-Class Youth Zone

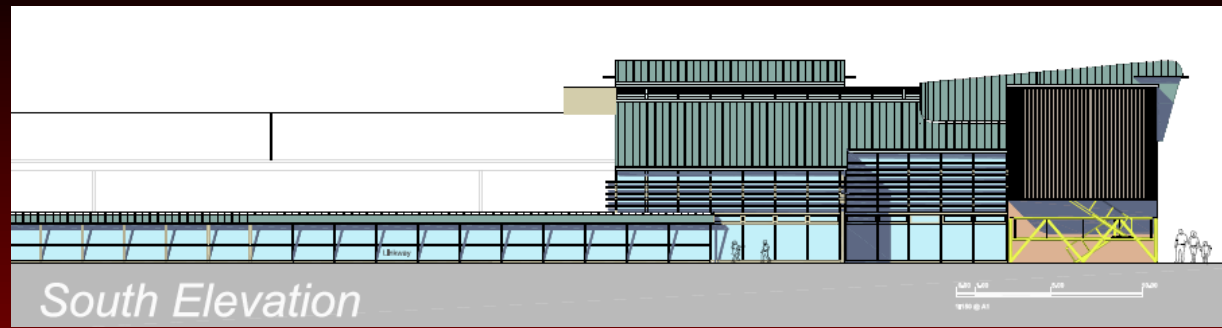


North Elevation



- **Organise an exceptionally imaginative and inspirational range of activities (often with accreditation) that will open new horizons and raise aspirations.**
- **work with all stakeholders (especially young people) to establish development priorities with innovative staffing and governance models.**
- **ensure opportunities and advantages of co-location are fully explored.**
- **Academy key themes must be directly assisted by the Zone and extended provision. E.g. Lifelong Learning; Achievement; Community..**
- **produce a sustainable business case which brings all stakeholders and partners together in a Carlisle area collaborative Centre-Satellite model**
- **contribute to help eradicate permanent exclusions by providing many opportunities for multi-agency advice and support.**
- **create opportunities throughout the academy day that will engage our most hard to reach young people.**
- **create innovative business partnerships and high levels of business volunteers and mentor programmes**





INCLUSION
 RAISE ASPIRATION
 RAISE ACHIEVEMENT
 REDUCE
 EXCLUSIONS
 ATTITUDES
 AND
 BEHAVIOUR
 COHESION



EXTENDED SCHOOL DAY STRUCTURE?
 INNOVATIVE STAFFING PROFILES AND BUSINESS MENTOR
 PROGRAMMES
 ENTERPRISE CREATIVE ARTS



Ofsted-
 LotC

NHS
 WELL-BEING



SPORT and
 HEALTHY
 LIFESTYLES

COMMUNITY STUDENT VOICE



SELF ESTEEM OUTDOOR LEARNING Ofsted-Community Engagement