

CARLISLE CITY COUNCIL

Report to:- Carlisle City Council

Date of Meeting:- Tuesday 17th July 2012

Agenda Item No:-

Public

Title:- **CARLISLE AND EDEN CRIME AND DISORDER
REDUCTION PARTNERSHIP PLAN**

Report of:- The Director of Community Engagement

Report reference:- CD 42/12

Summary:- This report presents the CDRP's work programme for the coming year in the form of their Partnership Plan. The work programme will be developed throughout the year by the CDRP's Leadership Group, where the City Council is formally represented, and in response to intelligence received on an ongoing basis.

Carlisle and Eden Crime and Disorder Reduction Partnership (CDRP) have developed a new partnership plan for 2012/13 (attached as Appendix 1 of this report). This plan forms part of our Policy Framework and replaces the existing plan (2011/12). It has been developed by the CDRP's Leadership Group with input from the City Council's Lead Officer (Director of Community Engagement) and previous Portfolio Holder and in consultation with all CDRP partner organisations. It has also been developed in direct consultation with the Carlisle and Eden Joint CDRP Scrutiny Panel at their meeting on the 28th March 2012.

Recommendation:-

That Council agree the plan in accordance with the Policy Framework

Contact Officer: Keith Gerrard

Ext: 7350

K Gerrard

Director of Community Engagement

05 July 2012

Note: in compliance with section 100d of the Local Government (Access to Information) Act 1985 the report has been prepared in part from the following papers: None

1. BACKGROUND INFORMATION AND OPTIONS

The Crime & Disorder Act 1998 placed statutory obligations on local authorities and the police to act in co-operation with the probation service, health authorities and other relevant agencies, and to work together to develop and implement a partnership plan for tackling crime and disorder in their area.

Section 97 of the Police Reform Act 2002 amended the above act so that responsible authorities also include the Police Authority, Fire Service and Primary Care Trusts for the area. Further reforms now list Environment Agency and Residential Social Landlords as 'participatory bodies'.

The legislation requires local Crime and Disorder Reduction Partnership to produce a plan setting out how it intends to tackle crime and disorder and allowing the development of strategies to tackle short, medium and long-term priorities. This also allows alignment to other planning cycles, most notably partners' individual corporate planning and Carlisle's Community Plan.

The attached plan outlines these priorities for 2012-13 and is supported by a series of actions plans being developed and delivered by the task groups of the CDRP.

As previously stated the plan has been developed by the CDRPs Leadership Group which brings together the statutory participatory bodies outlined above and several non-statutory but key stakeholders

The plan has subsequently been presented to the Carlisle and Eden Community Safety Partnership Joint Scrutiny Panel on the 28th March 2011 who supported the plan, recommended its implementation, and requested updates on the developing task group delivery plans at their next meeting.

2. CONSULTATION

2.1 Consultation to Date

As previously stated the plan must be revised annually, allowing the Partnership to take account of new priorities emerging from the ongoing assessments. The assessments are conducted every six months. The priorities must reflect the concerns raised by local people and there is a key requirement to carry out community consultation as part of the strategic assessment.

Central to the development of the Partnership Plan is a 'Strategic Assessment'. Undertaken in the Autumn of 2011. This is an assessment of information collected from responsible authorities, other partners, and the community. It is a document that best reflects the most up-to-date needs of the communities. It provides the most recent crime and disorder statistics as well as collating the key concerns, issues and priorities of partner organisations. This collation of this strategic assessment provides a wholly consultative evidence base which underpins this partnership plan.

Through the publishing of the consultation document on the CDRP website and direct consultation exercises, the CDRP have also shared the draft priorities with communities across the district.

As previously outlined this plan has also been considered by the Carlisle and Eden Joint CDRP Scrutiny Panel (28th March 2012).

2.2 Consultation Proposed

This CDRP plan should be considered a 'live' document and Executive's input is being actively sought through this paper.

3. RECOMMENDATIONS

- 3.1 That Council agree the plan in accordance with the Policy Framework.

4. REASONS FOR RECOMMENDATIONS

The purpose of the Partnership Plan (and this recommendation) is to provide a single document that presents the priorities and how they have been agreed. The plan illustrates the partnership structure that will address these priorities and how it will manage performance. It will also ensure Carlisle City Council has met its statutory obligations relating to the development of such plans.

5. IMPLICATIONS

- Staffing/Resources – Work to support the CDRP and the implementation of it's Partnership plan is already built in to the work programmes of Carlisle City Council's relevant officers and the plan will make no additional staffing or resource demands.

- Financial – There is no direct financial contribution from the City Council to the CDRP in 2012/13. Any additional support to the CDRP will need to be met from existing budgets.
- Legal – Crime and Disorder Reduction Partnerships are multi-agency groups set up in law (section 6 of the Crime and Disorder Act 1998) to tackle crime, drugs and anti-social behaviour throughout an identified geographical area. The CDRP plan should outline the priorities the partnership will focus on over the plan period. CDRPs are sometimes now known as Community Safety Partnerships.

The CDRP is one of the policies reserved to full Council by Article 4 of the Authority's Constitution.

- Corporate – The CDRP Plan forms a statutory part of our Policy Framework.
- Risk Management – The risks relating to the CDRP are recorded and managed by the Carlisle Partnership Manager
- Environmental – The plan supports positive actions to address environmental issues and enviro-crime.
- Crime and Disorder – The purpose of the plan is to present a coordinated response to tackling Crime and Disorder
- Impact on Customers – Nil.
- Equality and Diversity – As outlined in the impact assessment below.

Impact assessments

Does the change have an impact on the following?

Equality Impact Screening	Impact Yes/No?	Is the impact positive or negative?
Does the policy/service impact on the following?		
Age	No	
Disability	No	
Race	No	
Gender/ Transgender	No	
Sexual Orientation	No	
Religion or belief	No	
Human Rights	No	
Health inequalities	No	
Rurality	No	

If an equality Impact is necessary, please contact the P&P team.



**Partnership Plan
2012 /2013**

Foreword

Carlisle and Eden CDRP has and continues to be a successful catalyst for multi agency working to address crime and disorder in North Cumbria. Since its inception, we have worked effectively to contribute to significant and sustained falls in crime and disorder. This plan sets out how, in partnership, we will address the priorities as set out in the Strategic Assessment to ensure North Cumbria remains a safe place to live, work and Study.

2012/13 will see the removal of direct funding to CDRP's and this will bring new pressures and challenges to the Partnership. However, I am confident that Carlisle and Eden CDRP has both the strong strategic leadership and the operational knowledge, though our task groups, to meet these challenges in an effective and efficient way.

All Partners have expressed a commitment to the effective running of the Partnership and we will utilise mainstream resources effectively to continue to address crime and disorder throughout Carlisle and Eden.

Jane Muller

CDRP Chair

Contents

Introduction	4
Background	4
Purpose of the plan	4
 Developing the Plan	 5
Community engagement	5
The priorities	5
 Monitoring Performance and Delivery	 6
 Tackling the Priorities	 7
Anti-social behaviour and criminal damage	7
Violent crime	8
Domestic Violence	9
Reducing Re-offending	10
Emerging Issues	10

Introduction

Background

The Crime & Disorder Act 1998 placed statutory obligations on Local Authorities and the Police to act in co-operation with Health Authorities and other relevant agencies, to work together to develop and implement a strategy for tackling crime and disorder in their area.

Section 97 of the Police Reform Act 2002 amended the above act so that responsible authorities also include the Police Authority, Fire Service and Primary Care Trusts for the area. Further reforms now list the Probation Service as responsible authority and the Environment Agency and Registered Social Landlords as participatory bodies.

The Police and Justice Act 2006 made a significant number of amendments to the Crime and Disorder Act. In particular, this Act brought in the requirement for responsible authorities to produce a Partnership Plan, detailing how we will address our priorities.

Central to the development of the Partnership Plan is the annual Strategic Assessment. This document combines recorded crime data with information from a wide range of partners, including Health, local Councils and the Fire Service, to provide a detailed picture of crime, disorder and substance misuse in Carlisle and Eden. The assessment highlights the issues that are of most importance to our communities and enables the Partnership to identify emerging trends and plan tactics to tackle these issues.

The Strategic Assessment also helps to inform the Cumbria Community Safety Agreement. This document highlights County level priorities and areas that can be effectively addressed at this level and through the joining of resources.

Purpose of the Plan

The CDRP Partnership Plan has been compiled to provide key stakeholders and the community with a picture of the key actions to be taken during the 2012/13 financial year to tackle crime, disorder and substance misuse. Through the Plan and associated action plans, Carlisle and Eden CDRP will, deliver action

to address the priorities identified through the Strategic Assessment. It will be kept under review, both to ensure our work is effective and that our priorities continue to be relevant to local needs.

The Partnership plan offers an opportunity for all Partners to work closely towards a common aim; to maintain Carlisle and Eden as a safe place to live, work and visit.

Developing the Plan

This plan is a three year strategy, based on the priorities identified in the strategic assessment. It is revised annually, in line with national requirements and to reflect changes to our communities and emerging priorities. This high level action plan sets out an ambitious but achievable work plan to reduce crime, disorder and substance misuse in Carlisle and Eden. The plan also aims to increase feelings of safety within our communities and increase confidence in partner agencies dealing with issues that communities feel are important to them.

Community Engagement

The views and concerns of our communities are an essential element in the CDRP's work to tackle crime, disorder and substance misuse. In addition to information gathered from our Partners, the strategic assessment also gathered information from the British Crime Survey, and the Public Consultation Survey.

The feedback obtained from these surveys showed a great deal of overlap between the concerns and priorities of residents and those identified by the statutory agencies working as part of Carlisle and Eden Crime and Disorder Reduction Partnership.

Communicating with residents and informing them of our work and how they can highlight issues in their community is an important part of this Partnership Plan. In addition to the actions set out in this document, we will endeavour to take every opportunity to engage with our communities and publicise the work of the partnership.

The Priorities

The priorities for Carlisle and Eden, as identified through the strategic assessment, are:

- Anti social behaviour – To incorporate criminal damage and deliberate fires

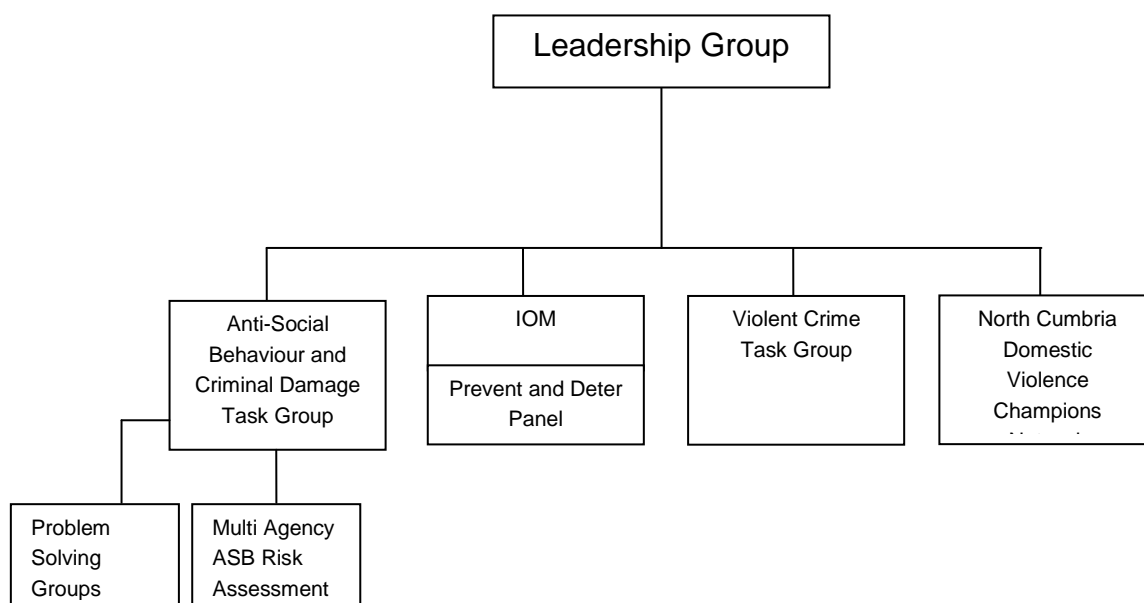
- Violent crime – To incorporate alcohol related violent crime
- Domestic violence
- Reducing re-offending

In addition to these priorities, the CDRP will respond to community priorities as and when they are identified.

Monitoring Performance and Delivery

The structure of the Carlisle and Eden CDRP is shown below. A range of task groups have been established to ensure our priorities are addressed appropriately and effectively. Each task group has its own action plan detailing further, how it will address key issues and priority areas.

Carlisle and Eden Crime and Disorder Reduction Partnership delivery arrangements



Each task group will follow an agreed process and consider projects and actions based on 3 over arching elements for each priority; prevention, education and enforcement. All tactics, actions and tasks developed from this plan will fall into one of these categories.

This plan directs activity for year 2012/13 and will be reviewed, based on an agreed performance management framework, by March 2013. Task groups will determine actions that are complete and therefore to be removed from the plan and those deemed successful and / or continuous.

Tackling the Priorities

The following sections set out headline activities that the CDRP intends to deliver in order to address the Priorities as set out in the strategic assessment. Each Task Group will develop their action plans based on these activities.

In addition to the activities set out in this document, Carlisle and Eden CDRP encourages innovation from Partners. We will support new and challenging ideas to address existing and emerging issues.

Anti-Social Behaviour and Criminal Damage

Anti-social behaviour and criminal damage can cover a broad range of issues that impact on others in a negative way. Although anti social behaviour and criminal damage has seen significant reductions in North Cumbria, certain types of anti-social behaviour are still identified as community concerns for residents in Carlisle and Eden.

It is important to note that incidents of anti-social behaviour are based on details given by the caller, so may depend on their perception rather than what is actually occurring. For example a group of friends meeting on a street, could be just that but can be perceived as anti-social or intimidating by someone else. Therefore it is a complex issue to tackle and interventions must include engaging with communities.

Although the number of incidents can depend on perceptions it is important to consider these calls because they add to the overall pattern of crime and disorder, especially in relation to issues that impact on people's lives and perceptions of their area.

The Carlisle and Eden Anti-Social Behaviour and Criminal Damage Task Group exists to provide a co-ordinated response to tackling anti-social behaviour and criminal damage.

Aim - To reduce anti social behaviour and criminal damage throughout Carlisle and Eden

This will be achieved through a range of detailed interventions, based on the following headline activities:

- The Partnership will fully support the Multi Agency Anti Social Behaviour Risk Assessment process and share information with partners when appropriate.
- The Partnership will continue to fully support the Neighbourhood Policing Team level Problem Solving Groups to tackle issues within communities.
- Through the appropriate use of Partner data and community intelligence, the Partnership will use intelligence led processes to target activity to address ASB, criminal damage and deliberate fires.
- The Partnership will support a range of diversionary activities for young people to enable engagement with targeted age groups, divert young people away from anti social activities and to prevent them from becoming victims of crime.
- The Partnership will support school attendance initiatives and other school projects where appropriate to reducing anti social behaviour and criminal damage.
- In order to tackle deliberate fires and arson, the Partnership will support a partnership approach to securing derelict and vacant properties and work alongside our Partners in the Fire and Rescue service to support a co-ordinated approach to address this issue.
- The Partnership will fully utilise CCTV where appropriate and ensure a co-ordinated approach to the deployment of partnership resources.
- As a Partnership, we will fully support a co-ordinated approach to issues of environment crime and fully utilise enforcement powers through Partner agencies where appropriate.
- As part of our intelligence led planning, the Partnership will work closely with Partners to implement dedicated action and campaigns in response to seasonal increases of ASB and criminal damage.
- The Partnership will support a co-ordinated approach to improving the use of 'design out crime' techniques and will work with our Partners in the Probation Pay Back Team to support the continuation of this work.
- The Partnership will fully support the Prevent and Deter panel in utilising available powers and resources to tackle known offenders of anti social behaviour, criminal damage and deliberate fire setting.

Violent Crime and a Safer Night Time Economy

In addition to tackling overall violent crime, the Task group is committed to reducing alcohol related violent crime and will work closely with the night time economy to achieve this.

Aim – To reduce violent crime, including alcohol related violent crime in Carlisle and Eden.

This will be achieved through a range of detailed interventions, based on the following headline activities:

- The Partnership will support a programme of multi agency visits to licensed premises to ensure they are a safe environment for staff and visitors and support appropriate enforcement action where necessary.
- In order to prevent low level disorder escalating into serious violent crime, we will support the use of targeted early interventions where appropriate.
- The Partnership, working closely with our Police and District Council Partners, will monitor, enforce and utilise designated public place orders.
- The Best Bar None Scheme has enabled Partners to engage closely with the night time economy trade, and we intend to continue to support this scheme, which has grown year on year.
- The Partnership will support Partners to deliver a programme of intelligence led, targeted test purchasing operations in order to reduce sales of alcohol to individuals under 18. In addition to this, the Partnership will deliver action to raise awareness around purchasing alcohol for under 18's.
- The Partnership will utilise existing resources to address substance misuse within the night time economy.
- As part of our intelligence led planning, the Partnership will work closely with our Partners to deliver campaigns in response to seasonal increases in alcohol related violent crime and disorder.
- The Partnership will continue to support the delivery and enhancement of Pubwatch schemes in North Cumbria.
- The Partnership will support and add value to a co-ordinated response in relation to high profile events throughout North Cumbria.
- The Partnership will fully utilise CCTV where appropriate and ensure a co-ordinated approach to the deployment of partnership resources.

Domestic Violence

Domestic violence has devastating consequences for the victim, their families and the wider community. It is rarely a one off incident, and should instead be seen as a pattern of abusive and controlling behaviour through which, the abuser seeks power over their victim. Victims of domestic violence suffer on many levels, health, housing, education, and lose the freedom to live their lives how they want, and without fear.

The definition used by the Association of Chief Police Officers is:

‘Any incident of threatening behaviour, violence or abuse (psychological, physical, sexual, financial or emotional) between adults who are or have been intimate partners or family members, regardless of gender or sexuality.’

Aim – Contribute to the delivery of the Cumbria Domestic Violence Business Plan through increasing awareness of domestic violence, responding to local issues and mainstreaming referral routes through Partner agencies.

Carlisle and Eden CDRP acknowledges that providing effective, consistent and comprehensive service provision for domestic violence requires a multi agency approach and increased partnership working. Through working together we can increase identification of domestic violence and reduce both the proportion of repeat incidents and the impact on those experiencing domestic violence.

To achieve this, the CDRP will support the development of the North Cumbria Domestic Violence Champions Network. This network draws together the agencies who can provide prevention, protection and support services and who will be instrumental in raising awareness of domestic violence within organisations in North Cumbria.

Domestic violence Champions will be the main link between their own organisation and the Partnership regarding action to address domestic violence and will cascade information and training throughout their organisation.

Reducing Re-offending

CDRPs have a responsibility to ensure that mechanisms are in place within their locality to support joint agency work to address the offending behaviour of priority individuals, known as prolific and priority offenders.

The CDRP will continue to support the Prevent and Deter Panel; a multi agency group that assesses targeted individuals, who’s current behaviour signals potential for future offending. The group works together to attempt to stop this offending behaviour through education, diversionary activities and other early interventions in addition to providing the information needed for relevant court action.

Furthermore, the Partnership will support the Integrated Offender Management Group in order to contribute to a reduction in re-offending. This Group provides a co-ordinated approach to those individuals who cause excessive strains on resources within partner organisations. Following the principles of integrated offender management, the Partnership will bring together relevant parties to assess these individuals and put action in place to address their offending or problematic behaviour.

Emerging Issues

In addition to the activities set out in this Partnership Plan, the CDRP are committed to addressing emerging issues that cause high levels of distress to our communities. When issues are identified, we will bring together all relevant agencies at a local level to ensure we can address issues effectively and in a timely manner.