

Carlisle City Council scrutiny panel meeting:

December Cumbria Floods Partnership update

**Jim Ratcliffe
Eden Catchment Director**

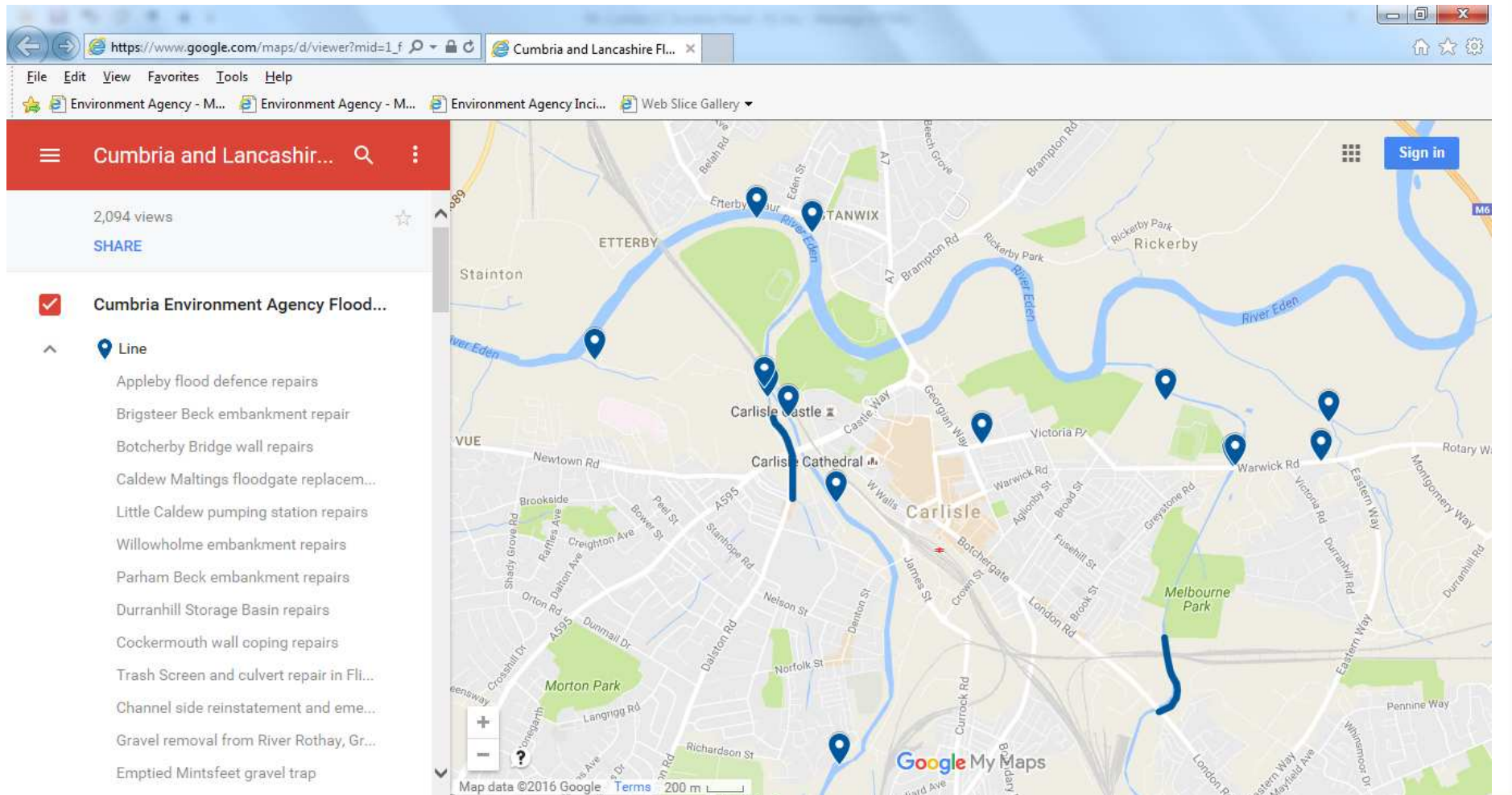
01 December 2016

Winter preparation in Carlisle



- ➔ 16 projects in response to Storm Desmond in Carlisle City Council area.
- ➔ Circa £750,000 cost.
- ➔ Separate to £25 million future investment programme.

Environment Agency recovery work (<http://bit.ly/2fPLG9x>)



Winter Readiness 2016/17

40km



temporary flood barrier to support communities at risk

7



principal depots with 8-12 hour* deployment anywhere in England

500k



sandbags at our depots

250



mobile pumps 4 inch and over to manage flooding and assist with recovery

30



enabling works at over 30 locations complete

4



incident command vehicles with real time video streaming

88



operational plans for barrier and high volume pump deployment

150



trained and ready site controllers





£12.5m



approximate investment in winter readiness

* excludes ultra high volume pumps

Improved Capability

Assets	Winter 2015/16	Pre winter 2016
 sandbags (k)	177	500
 barrier	8	40
 ICVs	2	4
 light towers	0	14
 pumps	180	250*

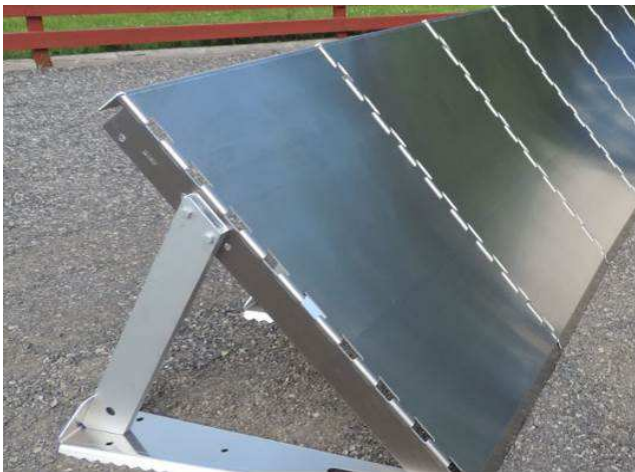
* Interim arrangement in place until £4.6M Phase 2 funding is available in 2017/18. Pumps are 4 inch and over



Temporary defence deployment



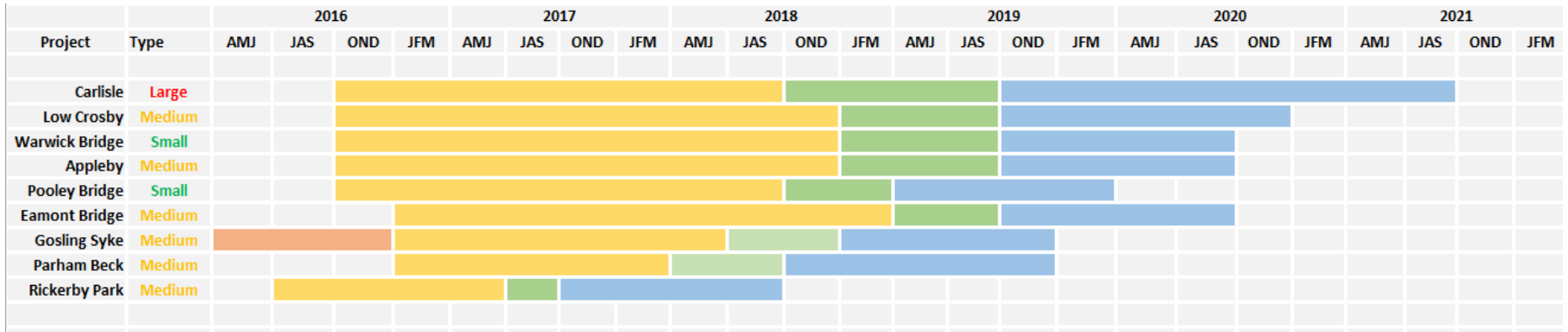
- ➔ Looking at 200 locations across Cumbria and Lancs.
- ➔ Looking at 3 locations in Carlisle.
- ➔ Critical that deployments don't make situation worse elsewhere.
- ➔ Community engagement key before plans signed off (circa Jan 2017).



Environment Agency Carlisle area flood risk project delivery programme

Project Scale (incl. Risks)

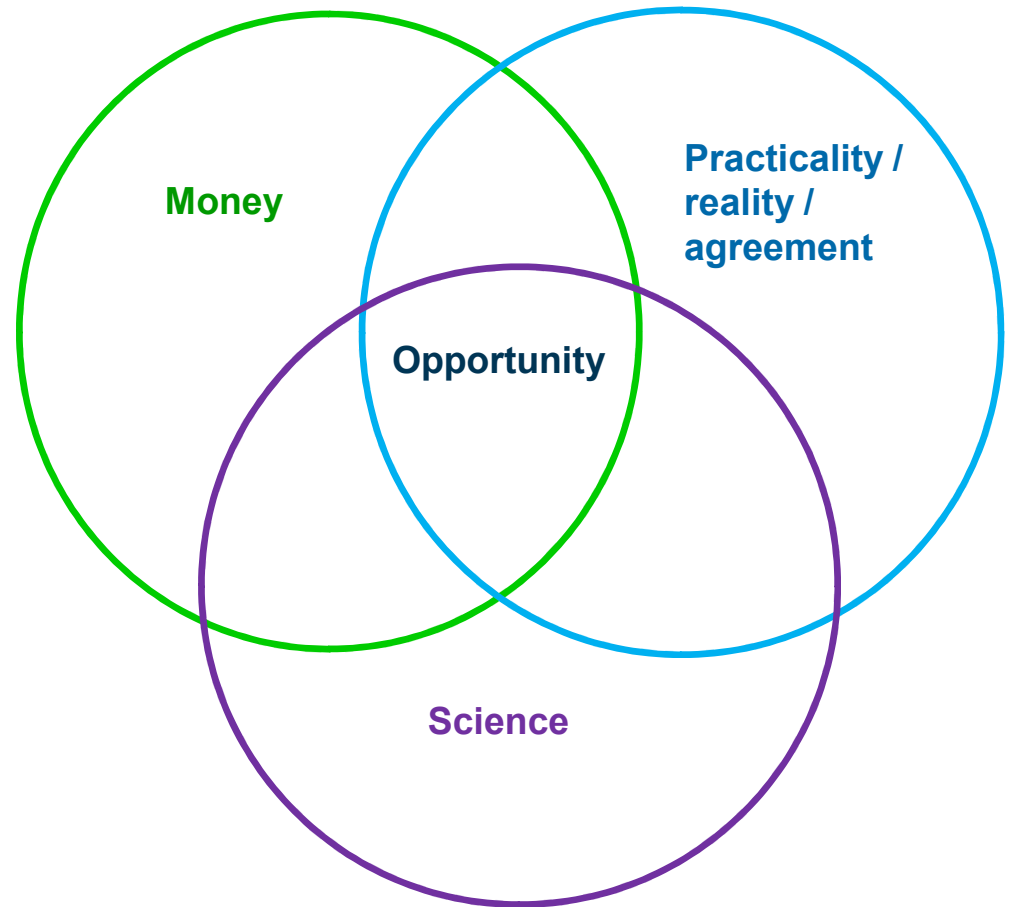
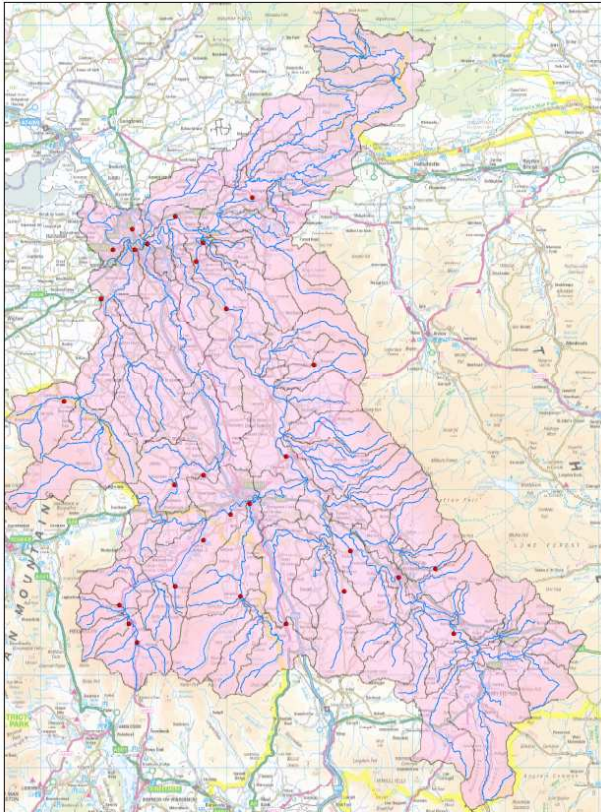
- < £1,000,000 Small
- < £5,000,000 Medium
- >£5,000,000 Large



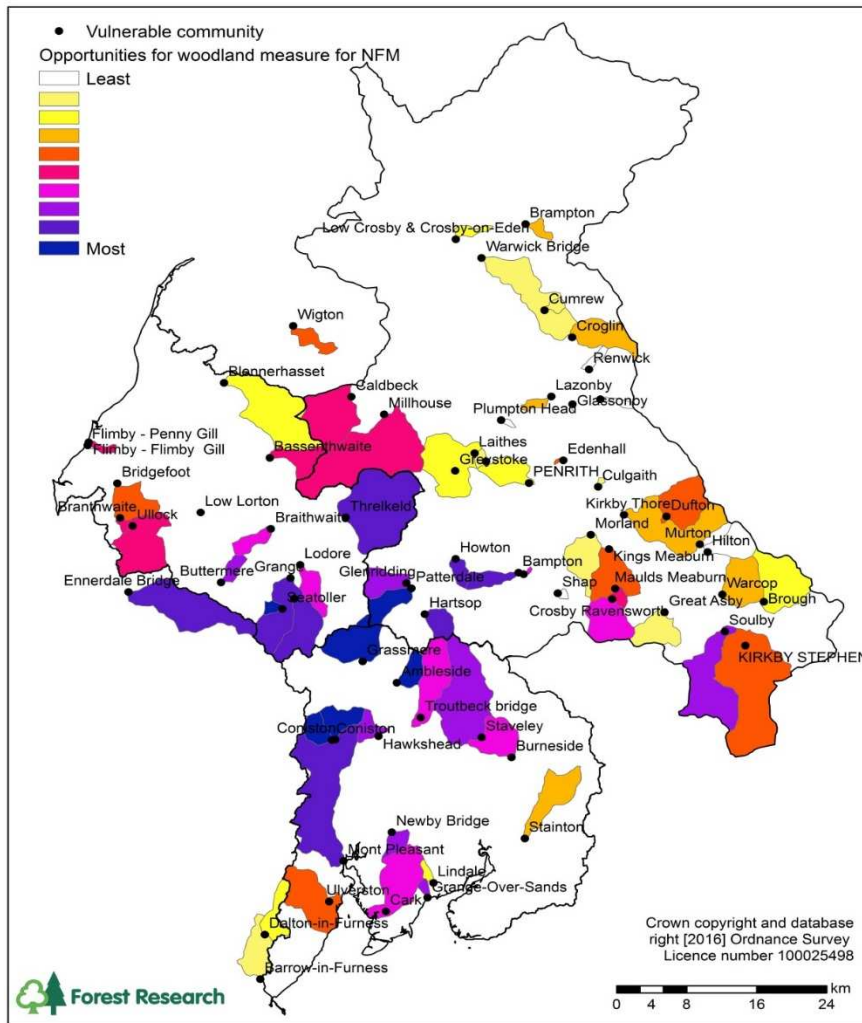
Project Stages and Activities

- Flood Risk Modelling & Mapping, Scheme Options Testing and Selection, Outline Design, Ground Investigations, Consultation and Scheme Approvals
- Initial assessment of flood risk
- Procurement of Contractor, Scheme Detailed Design, Planning Application and Permission, Other Consents (e.g Environmental)
- Scheme Construction

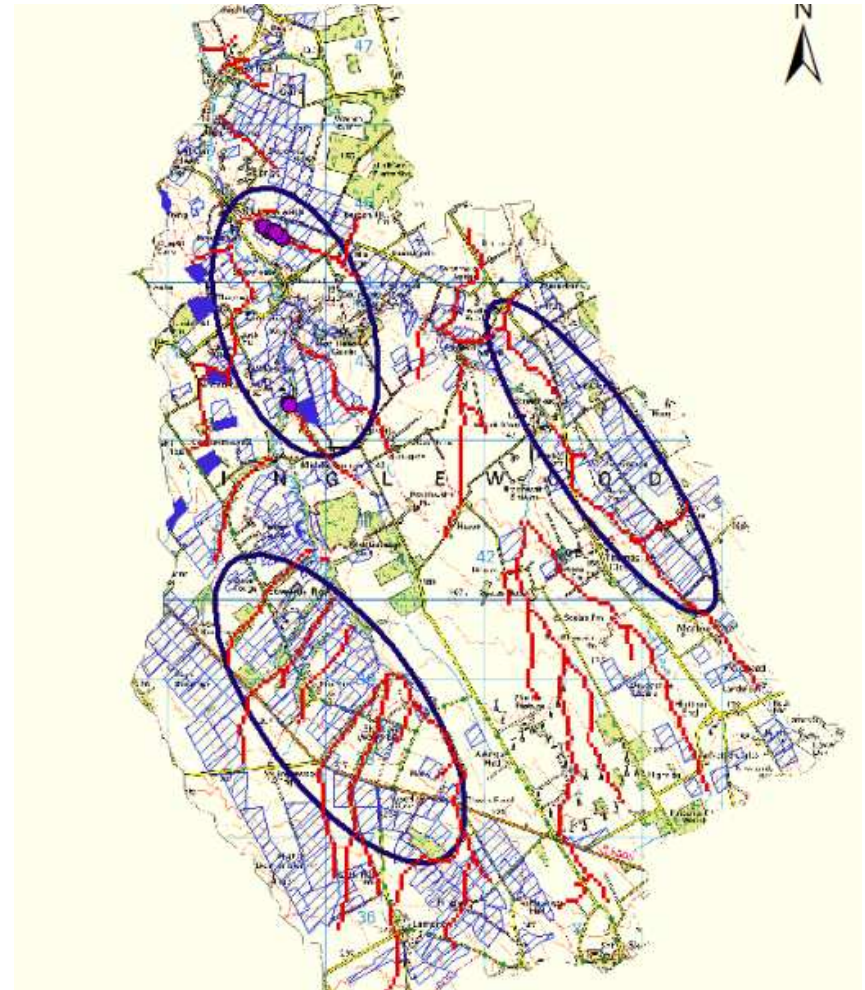
A catchment approach: How we'll make progress



Tools to help decision making



Cumbria Floods Dec 2015.
Catchments (<100 km²) upstream of flooded properties; ranked according to the opportunities for woodland measures to mitigate flood risk; woodland creation, amending forest drains and felling plans and creation of debris dams.



Roe & Ive catchment (Stockdalewath)

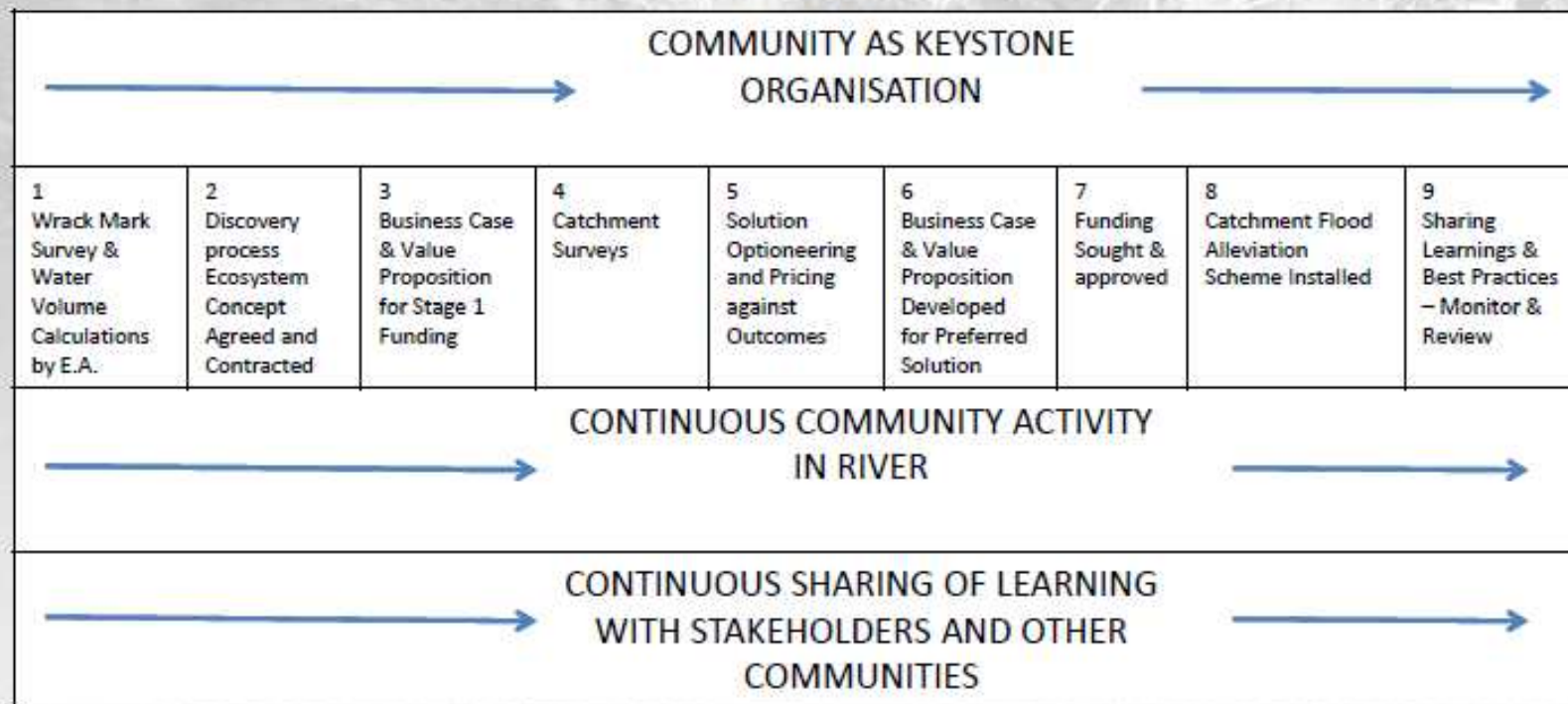
CFP pilots areas



- ➔ Impacted communities but also active & engaged communities.
- ➔ Opportunities for combining activity across CFP themes.
- ➔ All have individual makeup of issues and geography.
- ➔ Catchment size for NFM.

Stockdalewath community approach

Flood Alleviation Activity Plan



Patterdale (Genridding) community approach

Community Flood Group “Toolkit”

Components of Community Flood Management

