



RESOURCES OVERVIEW AND SCRUTINY PANEL

Panel Report

Public

Date of Meeting: 25 August 2011

Title: COST OF SERVICES

Report of: Deputy Chief Executive

Report reference: CE 24/11

Summary: At the last meeting of the Panel, a request was made for information on the costs of service delivery for the City Council and how that compares with other similar local authorities. It was verbally reported to the Panel that there was such an analysis and that is presented here for consideration by members. The two diagrams show a pictorial breakdown of gross and net expenditure – and the tables show a comparison against the “Historic Cities” group of Councils and the CIPFA Nearest Neighbours.

Questions for / input required from Scrutiny: This information is a summary of the costs of services for defined service areas. The comparisons against the “Historic Cities” and “Near Neighbours” groups provide a useful indication of where further enquiry can be usefully directed. In particular consideration should be given to high and low areas of expenditure and how this relates to priorities and performance. Inevitably at this stage, this overview will generate a number of questions for members and it is suggested that members plan some more detailed work in the areas that interest them.

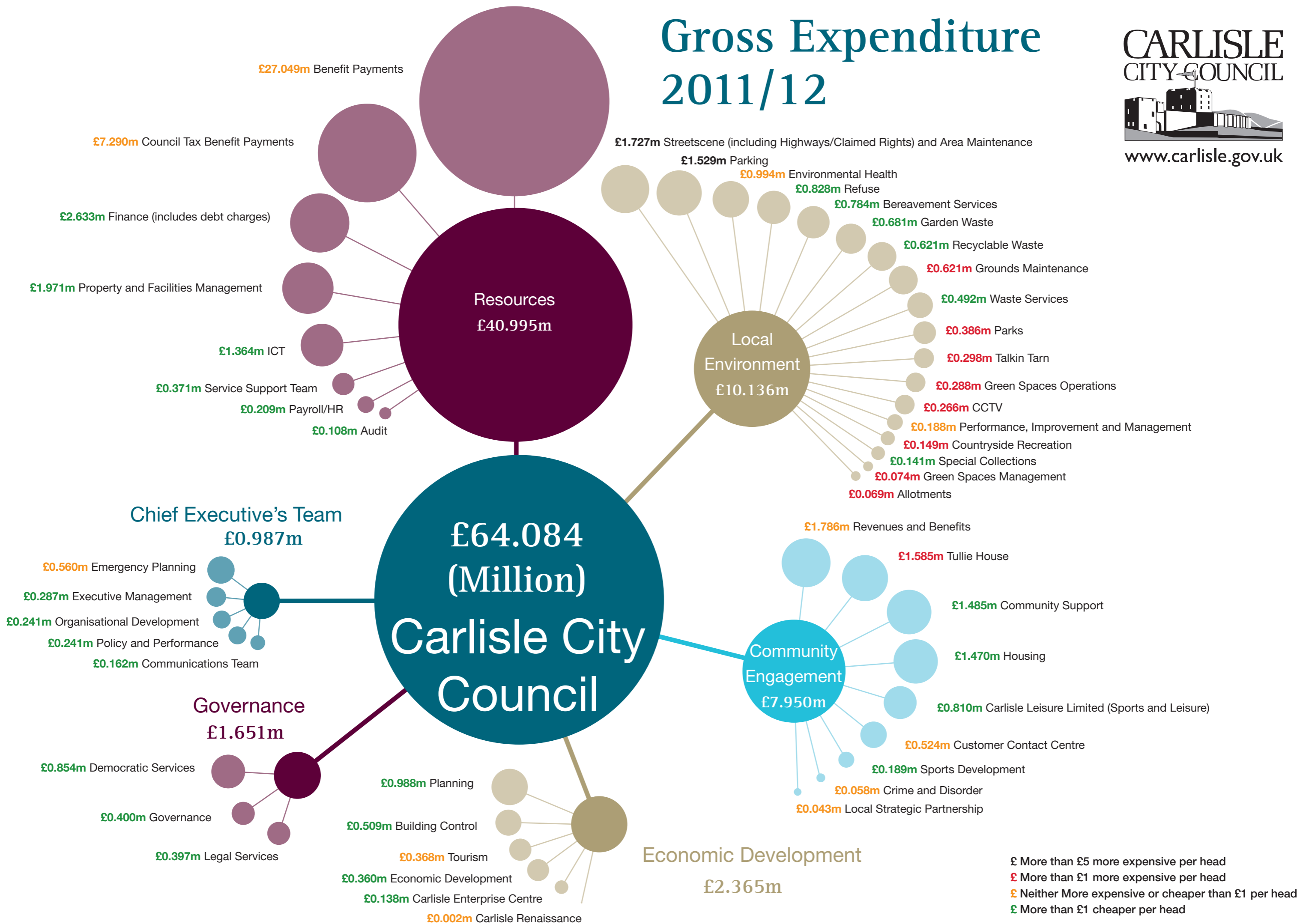
Note: in compliance with section 100d of the Local Government (Access to Information) Act 1985 the report has been prepared in part from the following papers: None

Recommendations: Members are invited to consider the information presented here and in particular how it might guide further scrutiny or activity for task and finish groups. Officers will support this through further analysis and information as required by members, and by direct support to task and finish groups where necessary.

Contact Officer: Jason Gooding

Ext: 7009

Gross Expenditure 2011/12



Net Expenditure 2011/12

