

Report to Council

Agenda
Item:

16

Meeting Date: 29th April 2014
Portfolio: Communities and Housing
Key Decision: Yes: Recorded in the Notice Ref: KD
Within Policy and Budget Framework YES
Public / Private Public

Title: CARLISLE & EDEN COMMUNITY SAFETY PARTNERSHIP
ANNUAL PLAN 2014-15
Report of: The Deputy Chief Executive
Report Number: SD06/14

Purpose / Summary:

The Carlisle and Eden Community Safety Partnership (CSP) have developed their Partnership Plan for 2014/15 (appendix 1) using data from the Community Safety Strategic Assessment as produced by the Police Information Management Section and Cumbria Intelligence Observatory. The plan has been developed by the CSP's Leadership Group with input from City Council officers and the Portfolio Holder for Communities and Housing.

The report presents the CSP's Partnership Plan which articulates the CSP's strategic priorities for the coming year. This plan is underpinned by a 'live' work programme in the form of a delivery and action plans owned and managed by the CSP's Task Groups and the ongoing work of the Local Problem Solving groups in Carlisle. Both of these work streams continue to develop throughout the year and can be influenced and shaped through the City Council's representation on the CSP's Leadership Group.

Recommendations:

It is recommended that the plan is approved by full council and adopted onto Carlisle City Councils policy framework.

Tracking

Executive:	
Overview and Scrutiny:	
Council:	

1. BACKGROUND

- 1.1** The Crime & Disorder Act 1998 placed statutory obligations on local authorities and the police to act in co-operation with the probation service, health authorities and other relevant agencies, and to work together to develop and implement a partnership plan for tackling crime and disorder in their area.

The legislation requires local Community Safety Partnerships to produce a plan setting out how it intends to tackle crime and disorder and allowing the development of strategies to tackle short, medium and long-term priorities.

The attached plan outlines these priorities for 2014-15 and is supported by a series of actions plans developed and delivered by the task groups of the CSP.

2. PROPOSALS

- 2.1** It is proposed that the CSP Partnership Plan is approved by Full Council and adopted onto Carlisle City Councils policy framework.

3. CONSULTATION

- 3.1** The Partnership Plan has already been circulated to all individual partners within the Carlisle and Eden Community Safety Partnership's and considered and approved by their Leadership Group. The views and comments received from Community Overview and Scrutiny panel (on 27th March 2014) were brought forward for consideration by the City Council's Executive and the CSP's Leadership Group during the development of the plan. The Community Overview and Scrutiny Panel were supportive of the plan and the priorities it identifies but recommended that that Hate Crime be recognised and included as a priority area. This recommendation has been taken on board and Hate Crime is one of the identified priorities within the CSP Plan.

4. CONCLUSION AND REASONS FOR RECOMMENDATIONS

- 4.1** It is recommended that the plan is approved by full council and adopted onto Carlisle City Councils policy framework to support the CSP's priorities and to satisfy the requirements of the Crime and Disorder Act 1998.

5. CONTRIBUTION TO THE CARLISLE PLAN PRIORITIES

5.1 “We will work more effectively with partners to achieve the City Council’s priorities”.

Contact Officer: Darren Crossley

Ext: 7004

Appendices Appendix 1 CSP Partnership Plan
attached to report:

Note: in compliance with section 100d of the Local Government (Access to Information) Act 1985 the report has been prepared in part from the following papers:

- SD02/14, SD03/14, SD04/14

CORPORATE IMPLICATIONS/RISKS:

Chief Executive’s -

Community Engagement –

Economic Development –

Governance – The CSP Partnership Plan contributes towards the Council’s obligations under the Crime & Disorder Act 1998.

Local Environment –

Resources - There are no financial implications of adopting the CSP Partnership Plan for 2013/14. The City Council makes no direct financial contribution to the partnership and therefore any additional support required will need to be met from existing base budgets.

Carlisle and Eden Community Safety Partnership Plan 2014-2015



Vision

By working in partnership, North Cumbria communities will remain safe and reassured

Key Priorities 2014

- **Anti-social behaviour**
- **Violent Crime**
- **Domestic Abuse and Sexual Violence**
- **Alcohol and Drug Misuse**
- **Hate Crime**
- **Reduce Re-offending**

Tackling the Priorities

Anti-Social Behaviour

- Maintain low levels of anti-social behaviour.
- Improving the partnership approach to co-ordinating activities for young people.
- Joining up the partnership approach for environmental aspects.

Violent Crime

- Work with partners to reduce violent crime and assaults.

Domestic Abuse and Sexual Violence

- Actively support the County wide work on Domestic Violence and DV Champions.
- Improve the management of repeat missing vulnerable young people to reduce exploitation.

Alcohol and Drug Misuse

- Support, develop and deliver the County wide Alcohol Strategy to reduce alcohol misuse within the partnership area
- Reduce harm caused by drugs.

Hate Crime

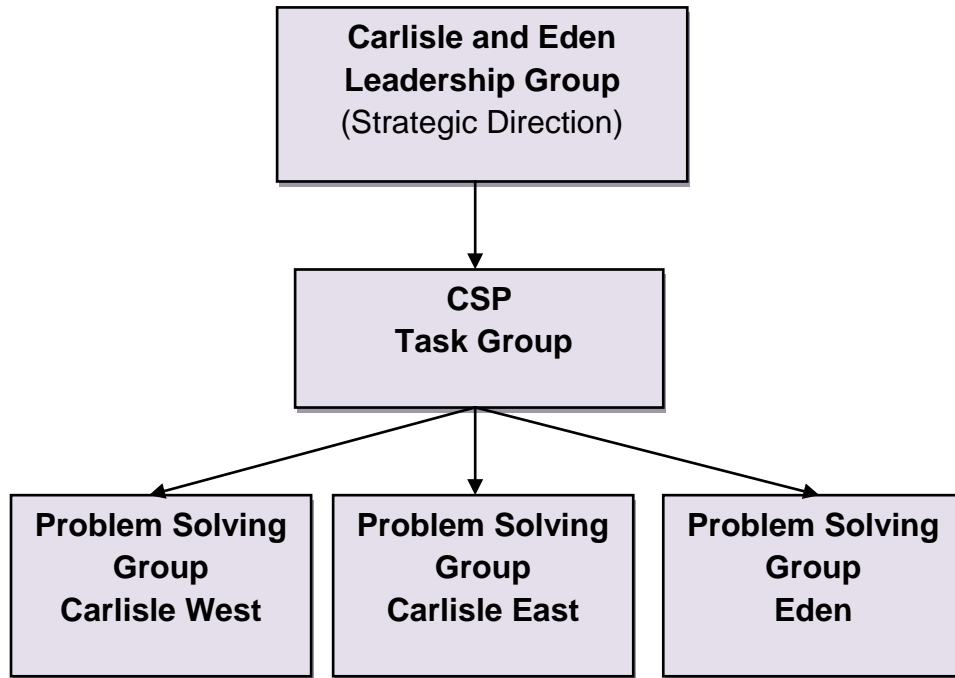
- Support partners to deliver the Hate Crime Action Plan.

Reduce Re-offending

- Continue the Integrated Offender Management programme using a wide range of partners to manage problem individuals effectively in communities.
- Monitor effectiveness of North Cumbria (IOM) Integrated Offender Management scheme.
- Encourage the use of restorative justice through provision of training to a range of public, private and voluntary sector agencies.

Carlisle and Eden Community Safety Partnership Plan 2014-2015

Our Partnership Approach



Performance 2013/ 2014

17% Reduction in Violent Crime
8% Reduction in Anti-Social Behaviour
12% Reduction in Burglary Dwelling
7% Reduction in Drug Possessions
15% Reduction in Thefts from Motor Vehicles

Carlisle and Eden Community Safety Partnership has and continues to be a successful partnership of multi agencies working together to address crime and disorder in North Cumbria. Since its inception, we have worked effectively to contribute to significant and sustained falls in crime and disorder. This plan sets out how, in partnership, we will address the priorities identified to ensure North Cumbria remains a safe place to live, work and study.

The partnership continues to have strong strategic leadership and dedicated and knowledgeable people in our task groups who are committed, prepared and focussed on the priorities for the year ahead.

Mary Robinson, CSP Chair

Successes

Best Bar None Scheme

The scheme has been instrumental in raising standards in bars, pubs and clubs in North Cumbria and has contributed to significant reductions in violent crime.

Taxi Rank Marshals

Deployment of marshals at public ranks helps prevent escalation of serious disorder by early intervention which is reassuring to taxi operators and the public.

Domestic Violence Bodycam Project

CSP funding allowed Cumbria police to purchase of 6 additional bodycams. During the 6 month trial all police officers on 3 Section Carlisle were issued with bodycams that would be worn at all times when on duty and would record their attendance at every domestic violence incident. At the end of the trial period there had been an improved conviction rate particularly for victimless prosecutions.

Operation Roman Candle

Comparisons of ASB figures throughout the operation period show significant reductions in the two priority areas. City West saw reductions of 43% and Carlisle East saw reductions of 54%

Appleby Fair

The co-ordinated approach by partners to Appleby Fair has made it a far safer and more community oriented event.

EXCERPT FROM THE MINUTES OF THE EXECUTIVE HELD ON 10 MARCH 2014

**EX.24/14 CARLISLE AND EDEN COMMUNITY SAFETY PARTNERSHIP
ANNUAL PLAN 2014/15
(Key Decision – KD.02/14)**

Portfolio Communities and Housing

Relevant Overview and Scrutiny Panel Community

Subject Matter

The Communities and Housing Portfolio Holder reported (SD.02/14) that the Carlisle and Eden Community Safety Partnership (CSP) had developed their Draft Partnership Plan for 2014/15 (a copy of which was attached at Appendix 1) using data from the Community Safety Strategic Assessment (attached at Appendix 2).

The Portfolio Holder drew Members' attention to the crime figures which showed that the incidence of crime for Carlisle continued to fall year on year and therefore the City was still a relatively safe place. It should also be noted that the incidence of crime relative to Botchergate and the night time economy impacted upon the figures for the Castle and Currock Wards.

The Plan had been developed by the CSP's Leadership Group, with input from City Council Officers and herself.

The Portfolio Holder further emphasised that, whilst the Partnership Plan was presented as a developed document, it represented a 'live' work programme which would develop throughout the year and could be influenced and shaped via the City Council's representation on the CSP's Leadership Group.

In conclusion, the Communities and Housing Portfolio Holder moved that the Executive consider and note the report, prior to recommending it for wider consultation.

The Economy and Enterprise Portfolio Holder seconded the recommendation.

Summary of options rejected None

DECISION

That the Executive had considered and noted Report SD.02/14 and recommended it for wider consultation.

Reasons for Decision

To enable the report to be considered and recommended for wider consultation

EXCERPT FROM THE MINUTES OF THE COMMUNITY OVERVIEW AND SCRUTINY PANEL HELD ON 27 MARCH 2014

COSP.24/14 CARLISLE AND EDEN COMMUNITY SAFETY PARTNERSHIP ANNUAL PLAN 2014-15

The Contracts and Community Services Manager submitted report SD.03/14 presenting the Carlisle and Eden Community Safety Partnership (CSP) Annual Plan for 2014/15. The Plan had been developed by the CSP's Leadership Group with input from the City Council Officers and the communities and Housing Portfolio Holder. The Plan was drafted using data from the Community Safety Strategic Assessment and Strategic Assessment.

The Contracts and Community Services Manager gave an overview of the Strategic Assessment which the Panel had considered at their previous meeting.

The report presented the work of the CSP for the coming year in the form of their Partnership Plan. The Contracts and Community Services Manager explained that the document was a live working programme which would develop throughout the year and could be influenced and shaped through the City Council's representation on the CSP Leadership Group. Comments from the Panel would be offered to the Executive and subsequently full Council.

The Communities Development Officer reiterated that the Plan was a broad overview and that Anti Social Behaviour continued to be the top priority. She gave an overview of each of the priorities drawing particular attention to Hate Crime and the promotion of reporting methods.

In considering the Carlisle and Eden Community Safety Partnership Plan Members raised the following comments and questions:

- Would the Police and Crime Commissioner (PCC) continue funding the CSP?

The Communities Development Officer explained that the PCC would hold the funding and the CSP would have to bid for funding for projects. It was understood that long term projects such as Best Bar None would continue to be funded and other projects would require the submission of a bid.

- Were the priorities of the CSP in line with the PCC priorities?

The Contracts and Community Services Manager confirmed that the priorities of both were aligned to secure funding opportunities.

- Would the CSP be working with the Cumbria Gateway project to reduce re-offending?

The CSP would work closely with the Integrated Offender Management Scheme to reduce re-offending.

- A Member asked for more details with regard to the Carlisle and Eden Leadership Group, the CSP Task Group and the Problem Solving Groups.

The Contracts and Community Services Manager responded that the Carlisle and Eden Leadership Group dealt with strategic matters, the Task Group managed district wide projects and Problem Solving Groups addressed emerging issues on the ground before they escalated.

Members supported the work being carried out by the Problem Solving Groups and asked that details of the Groups and their meetings be circulated to all Members to encourage their participation and the opportunity to report issues.

RESOLVED: 1) That report SD.03/14 – Carlisle and Eden Community Safety Partnership Annual Plan 2014-15 – be noted.

2) That details of the Problem Solving Groups and their meeting dates be circulated to all Members of the City Council.

EXCERPT FROM THE MINUTES OF THE EXECUTIVE HELD ON 7 APRIL 2014

**EX.32/14 **CARLISLE AND EDEN COMMUNITY SAFETY PARTNERSHIP
ANNUAL PLAN 2014/15
(Key Decision – KD.02/14)**

(In accordance with Paragraph 15(i) of the Overview and Scrutiny Procedure Rules, The Mayor had agreed that call-in procedures should not be applied to this item)

Portfolio Communities and Housing

Relevant Overview and Scrutiny Panel Community

Subject Matter

Pursuant to Minute EX.24/14, the Communities and Housing Portfolio Holder reported (SD.04/14) that the Carlisle and Eden Community Safety Partnership (CSP) had developed their Partnership Plan for 2014/15 (a copy of which was attached at Appendix 1) using data from the Community Safety Strategic Assessment.

The Portfolio Holder reminded Members that the Plan, which had been developed by the CSP's Leadership Group with input from City Council Officers and herself, presented the CSP's evidence based strategic priorities. Those were used as the framework to inform a live work and delivery programme, aimed at reducing crime and anti-social behaviour across the district. It should be noted that Hate Crime had been included as a key priority this year. She added that delivery would continue to develop throughout the year and could be influenced and shaped through the City Council's representation on the CSP's Leadership Group.

The Community Overview and Scrutiny Panel had, on 27 March 2014, considered the matter and resolved:

“1) That report SD.03/14 – Carlisle and Eden Community Safety Partnership Annual Plan 2014-15 – be noted.

2) That details of the Problem Solving Groups and their meeting dates be circulated to all Members of the City Council.”

A copy of Minute Excerpt COSP.24/14 had been circulated.

In conclusion, the Communities and Housing Portfolio Holder moved that the Executive consider and approve the Plan and recommend it to Council for adoption.

The Deputy Leader, and Environment and Transport Portfolio Holder seconded the recommendation.

Summary of options rejected None

DECISION

1. That the comments of the Community Overview and Scrutiny Panel, as set out in Minute Excerpt COSP.24/14, be noted and received.
2. That the Executive had considered and approved the Carlisle and Eden Community Safety Partnership Annual Plan 2014/15 and recommended it to Carlisle City Council for adoption.

Reasons for Decision

To enable the report to be considered and approved; and recommended to Council for adoption