



COMMUNITY OVERVIEW AND SCRUTINY COMMITTEE

Committee Report

Public/Private*

Date of Meeting: 14th February 2008

Title: Draft CDRP Tactical Assessment

Report of: An update on the development of the Draft CDRP Tactical Assessment and the next stages towards the Partnership Plan for 2008/2009.

Report reference: PPP 14/08

Summary:

There is a clear requirement to review the activities of the CDRP alongside the changes in trends and patterns of crime, disorder, ASB and substance misuse. The Leadership Group and current task groups have terms of reference in place to facilitate regular review of CDRP activities and this is captured within the minutes of the various groups. This document applies a standard set of questions to each post and project and presents the information in a single document. It will be an essential document for decision-making as the CDRP develops its Partnership Plan for 2008/2009.

Questions for / input required from Overview and Scrutiny:

1. In its current draft form and within the available time, the document has the potential to go deeper into the evaluation of 'Large' posts and projects or continue to document all the projects ('Medium' and 'Small'). What would be the best use of the CDRP Support Team time?
2. Have enough linkages been made between the posts and project and the priorities of the CDRP and the Countywide Strategic Partnership?
3. Is the relationship between CDRP activity and key issues such as 'Alcohol misuse' or 'Positive Activities for young people' clear?

Contact Officer: Steven O'Keeffe

Ext: 7011

Note: in compliance with section 100d of the Local Government (Access to Information) Act 1985 the report has been prepared in part from the following papers: None

1. BACKGROUND INFORMATION

Why do a tactical assessment?

The Carlisle and Eden Crime and Disorder Reduction Partnership has ensured that addressing under performance against the national Public Service Agreement (Home Office PSA1, Reduction in Crime) became a focus for partnership activity from 2006 until the close of the agreement in march 2008.

The Leadership Group of the CDRP has insisted that a performance report is the first business item on its own agenda and the agenda of each of its three task groups (Violent Crime and Disorder, Acquisitive Crime, ASB and Criminal Damage).

This has meant that performance set the tone for the discussions between the Leadership Group and Task Group Chairs and that the Task group chairs continued this discussion with the members of the task groups, key officers who were delivering posts and project work for the partnership.

These conversations are reflected in the minutes, however the partnership recognises the need stated in the national guidance to evaluate the effectiveness of its work against the changes in trends in crime, disorder, ASB and substance misuse.

The Carlisle and Eden Crime and Disorder Reduction Partnership has developed a new set of draft priorities for 2008/2009 which are open to consultation. These priorities are:

- Anti social behaviour
- Criminal Damage, especially to motor vehicles
- Violent Crime, especially Domestic Violence

These priorities are very similar to the priorities set in 2005 and have therefore been worked on from the period of 2005-2008. The exception being Acquisitive Crime, which is no longer suggested as a priority due to the excellent performance in reducing this crime group.

In order for the partnership to develop new tactics to tackle these priorities lessons have to be learnt about how effective our interventions have been over the last year (2007/2008). The Tactical Assessment, is an attempt to determine the effectiveness of these interventions and inform the partnership on what works in practice.

The Tactical Assessment, Strategic Assessment and Partnership Plan are three key documents that support an increasingly intelligent approach to the work of the CDRP. They will be refreshed on an annual basis and their production will become the norm for the partnership.

In its current draft state the assessment has covered all the active 'large' posts and projects. This leaves the remaining 19 'medium', 9 'small' and 14 ('none') projects that required no funding to be added to this document.

What happens next?

The Leadership agreed that the two districts would develop two separate consultation documents based upon the joint Strategic Assessment. The consultation document will be the vehicle for circulating the draft priorities to the full partnership and the wider community for comment.

The Improvement Plan of the CDRP has been developed to incorporate the key changes required to deliver against the CDRP Reform agenda in a three-tier area. The paper on CDRP Structure, a discussion paper on geographical versus thematic approach, was debated at the Leadership Group meeting on the 23rd January. The outcome of the debate swung in favour of retaining the thematic approach but a firm decision was postponed until the close of the two-day workshop on 'Neighbourhood Improvement' delivered by the National Policing Improvement Agency as part of their Neighbourhood Policing Programme. A further update on this debate will be given in the committee meeting.

The earliest the Leadership Group will consider a Draft Partnership Plan is the 5th March 2008. This gives the Support Team four weeks to complete the consultation, confirm the new structure, update the constitution and develop the plan. The plan can then be available for consultation through to April 2008 when it will have to be finalised.

A key part of the plan is going to be a new performance framework with strong links to both the Local Area Agreement (LAA) and the forthcoming Assessment of Police and Community Safety (APACS). As both these developments will not be finalised until after April 2008 we will have to make an informed choice on indicators with adjustments following once the LAA is signed off by GONW and APACS is officially launched.

The Strategic Assessment has reviewed the period March 2007 to August 2007, forecasting the period September 2007 to February 2008. This is the same yearly split as the Police's Strategic Assessment. To complete a true picture of the year the CDRP Strategic Assessment will be repeated in March 2008 alongside the Police Strategic Assessment. Once that assessment has been completed the partnership plan will be refreshed. The Leadership Group will then consider whether the partnership needs a six-monthly or an annual strategic assessment to inform the partnership planning process.

It is important that the district plans and strategies recognise the role the CDRP Strategic Assessment plays in driving the activity of the CDRP. Whenever possible the assessment should be used to refresh the priorities and objectives of these plans.

2. IMPLICATIONS

- Staffing:

The CDRP and the Countywide Safer & Stronger Thematic Partnership directly funded over 6 staff hosted by 5 different organisations on a year-by-year basis. This is not a financially sustainable way of delivering safer and stronger outcomes in Carlisle.

- Financial

The financing of the plan is dependent upon three key funding streams, of which only two are confirmed. The confirmed funding streams are the *Basic Command Unit Fund* and the *Safer and Stronger Communities Fund* now part of the single pot of funding distributed by the County Strategic Partnership. This leaves the *Pooled Budget*, based on grants from the responsible authorities to be confirmed. The County Strategic Partnership (Safer & Stronger Thematic Group) has it within their power to give the CDRP three-year funding as they have received a three-year settlement.

- Legal

The Tactical Assessment, Strategic Assessment and Partnership Plan fulfil the statutory requirements left in the wake of the removal of the need to produce a triennial audit and strategy.

- Corporate

Ideally, the Tactical Assessment will become part of an annual review of the 'Safer' element of corporate priority 'Cleaner, Greener and Safer', it could provide a launch pad for the mainstreaming of successful interventions.

- Risk Management

The Strategic Assessment is part of a CDRP Reform Programme designed to create more effective partnerships. Failure to meet these reforms will put the partnership at risk of criticism from GONW. The countywide Safer & Stronger Practitioner Group has a working group on CDRP Reform which is making good progress on standardising all the CDRPs approach to the reforms. The Leadership will receive regular updates on these reforms so that they can manage this risk.

- Equality and Disability

The Tactical Assessment contains many equality and diversity issues.

- Environmental
- Crime and Disorder

These areas make up the content of the Tactical Assessment.

- Impact on Customers

The performance of the CDRP demonstrates fewer overall crimes and incidents of ASB than this time last year and less than the 2003/2004 baseline year. Fewer crimes mean fewer victims of crime, which is one of the most positive partnership outcomes, we could hope to deliver.

DRAFT DRAFT DRAFT DRAFT

Not protectively marked

Carlisle and Eden Tactical Assessment 2007

DRAFT Tactical Assessment of interventions against crime, disorder; anti-social behaviour; substance misuse; environmental anti-social behaviour and crime.

**Carlisle and Eden CDRP
North Cumbria Basic Command Unit**

Handling instructions

This report is the first draft of the tactical assessment.

Owned by:

Carlisle and Eden Leadership Group

Prepared by:

Support Team of the Carlisle and Eden CDRP:

Version control

0.1	Support Team
-----	--------------

Special thanks to:

Carlisle and Eden CDRP Support Team

DRAFT DRAFT DRAFT DRAFT

Not protectively marked

Contents

Introduction	4
Aims and purpose.....	5
Methodology	6
Evaluation	7
Introduction	7
Evaluation of CDRP support posts and projects	7
CDRP Administration Officer	7
Cumbria Partnership Support (CuPS)	8
Evaluation of activities against current priorities	8
Anti social behaviour & Criminal Damage	8
Carlisle and Eden Multi-Agency Problem Solving Unit.....	8
Carlisle ASB Coordinator Post	9
ASB Witness Support Officer	11
Community Involvement Officer (Eden)	12
Redeployable CCTV Cameras	13
Police Community Support Officer Contribution (PCSO)	17
Case Study 2: PCSO activity.....	18
Young Fire-fighters	19
Alleygates	19
Acquisitive crime.....	22
Neighbourhood Watch Development Officer	22
Safer Homes.....	23
Violent crime (alcohol related)	26
Botchergate Experimental Road Closure Order	26
Let Go Carlisle	27
Prolific Offending ~ Prolific and Other Offending Strategy	29
Scafell Project.....	29
Glossary.....	30
APPENDIX A ~ Tactical Assessment questions	33
APPENDIX B ~ Project & Post List with scale and provisional costs.....	35

DRAFT DRAFT DRAFT DRAFT

Not protectively marked

Figures

Figure 1 : Project scale 6

Figure 2: Comparison of counts of ASB 2006 to 2007 9

Figure 3 : February referrals 12

Figure 4: Feedback on Alleygates 21

Figure 5: Alleygates and ASB incidents 21

Figure 6: Safer Homes satisfaction survey results 24

DRAFT DRAFT DRAFT DRAFT

Not protectively marked

Introduction

This is the first 'Tactical Assessment' of the CDRPs activities. As part of improvements to the business processes that drive the CDRP we need to examine activities of the partnership on a regular basis. This document will provide an assessment of the current partnership plan, the task group action plans. Each of the posts and projects within the task group action plans has been evaluated against an agreed set of key questions. It is through this document that the clear links can be made between levels of crime and disorder in North Cumbria and the impact of the CDRP interventions.

The 'Tactical Assessment' is designed to be used alongside the 'Strategic Assessment'. Together these documents form two crucial reference documents for the Partnership Plan 2008/2009.

The assessment of posts and projects is a snapshot of how we are doing at this moment in time. Many of the CDRP activities are in their 'lead in' stage of development when costs are high and therefore cost effectiveness is low. An example is the 'Botchergate experimental Road Closure Order', this financially large project has been launched in the last quarter of the financial year. The impact of the road closure is most likely to be felt during the summer of 2008.

DRAFT DRAFT DRAFT DRAFT

Not protectively marked

Aims and purpose

The aim of this document is to provide the Leadership Group of the CDRP with a detailed assessment of the posts and projects active during the year. These posts and projects make up the work programme of the CDRP and represent the Leadership Groups response to the current set of priorities.

By reviewing each of these activities the CDRP can make a judgement on how effective and how cost effective its interventions have been. This evidence will provide the Leadership Group with a basis to decide on the tactics for the new set of priorities that will make up the Partnership Plan 2008/2009.

It is through this process, which begins with the strategic assessment, that the CDRP aims to reduce crime and disorder; anti-social behaviour; substance misuse; and activities likely to adversely affect the environment.

The Carlisle and Eden CDRP is one of four CDRPs in the county of Cumbria. All of these CDRPs meet regular as part of a countywide strategic partnership. This tactical assessment has a role in identifying shared activities, which should be tackled in partnership with other CDRPs or all the CDRPs in the county as part of countywide work.

DRAFT DRAFT DRAFT DRAFT

Not protectively marked

Methodology

All posts and projects are not equal. They have received different levels of funding from the CDRP. To give the posts and projects a useful scale they have been banded into groups of 'small', 'medium', or 'large'.

Scale	Monetary value of funding (£)
none	0
Small	1-1000
Medium	1000-10000
Large	10000-100000

Figure 1 : Project scale

The key questions used to steer the assessment are presented in Appendix A. The questions focus upon the impact the activity has had on a local area; wherever possible this has been linked to a Lower Super Output Area.

Lower Super Output Areas have been the geography of choice for Carlisle and Eden CDRP over the last three years. It was therefore decided to develop a range of areas that would be of consistent size and whose boundaries would not change. Lower Super Output Areas are built from groups of the Output Areas (OAs) used for the 2001 Census, They have a minimum population 1000; mean 1500.

Each of the interventions evaluated gained the support of the CDRP Leadership Group during 2007. To gain the financial support they required each worked up a project document within a task group. Once adopted by the task group on to their action plan a bid for resources was taken to the CDRP Leadership Group. If agreed the resources would be made available for the financial year.

The only exception to this process is the 'Small Projects' programme. The Support Team of the CDRP deals with this programme funded to the tune of £20,000. There is a simple bidding form that is accessible to the wider community and the Support Team makes decisions on a fortnightly basis.

DRAFT DRAFT DRAFT DRAFT

Not protectively marked

Evaluation

Introduction

The evaluation is grouped under the current CDRP priorities. They are sorted by scale, largest to smallest. In this way it is clear what project or post is tackling which of the CDRP priorities.

Evaluation of CDRP support posts and projects

CDRP Administration Officer

This post is very much a 'back office' support role, it is developing beyond administration support to provide assistance to key projects and ensure better communication within the partnership.

The key duties of the fulltime post are:

1. Arrangement of meetings, agenda setting and minute taking of all Crime and Disorder Reduction Partnership (CDRP) meetings, including Task Group meetings and Anti-Social Behaviour panels and conferences.
2. Assistance to the CDRP Support Team in managing, developing and maintaining effective administration and financial information systems to meet the requirements of the CDRP and its rapidly expanding budget.
3. Organisation of large scale events; including room booking, sending out invitations and monitoring responses.
4. Research on best practice in community safety, and on work being undertaken within the Partnership.
5. Undertake work that supports ongoing projects forming the CDRP Programme of work.

The post is hosted by Carlisle City Council and is based in the MAPS Unit. This post is on a fixed term contract, finishing in April 2008.

DRAFT DRAFT DRAFT DRAFT

Not protectively marked

Cumbria Partnership Support (CuPS)

Cumbria Partnership Support is a group of partnership analysts based at the Headquarters of Cumbria Constabulary. This ensures a monthly supply of base data to all the CDRPs and a provision of bespoke analysis based upon local needs. The CuPS service receives an agreed level of funding each year from the Safer & Stronger Thematic Partnership and is considered a countywide project supporting the management information needs of the CDRP delivery partnerships.

Evaluation of activities against current priorities**Anti social behaviour & Criminal Damage**

The CDRP has tackled ASB and criminal damage through the work of posts and projects reporting to the ASB and Criminal Damage Task Group. The task group action plan provides the 'live' plan of activities designed to make a difference to ASB and Criminal Damage. The task group has two sub-groups, MINX (Motor vehicle nuisance) and Graffiti. Throughout the year there have been numerous campaigns and events to tackle ASB in areas of greatest need. These interventions are presented in a descending order of scale (Large to small).

Carlisle and Eden Multi-Agency Problem Solving Unit

Up until the floods in January 2005 the CDRP had a small office within the Community Support Section of then Economic and Community Development Directorate. The MAPS Unit was launched in May 2007 as a replacement for this office combining the recommendations of the Carlisle Community Overview & Scrutiny Committee with the resources of the CDRP. The start up cost of the project were borne in this year, the annual running costs are met by the CDRP.

Though often described as an ASB Unit the office provides a base for three key functions:

- Tackling ASB in Carlisle and Eden
- Administering and developing the Carlisle and Eden CDRP
- Independent Domestic Violence Advisors

The majority of officers who work in the space are tackling ASB. The office provides a workspace that combines access to each of the key responsible authorities. The routines developed within the office have created a robust approach to tackling ASB. Attendance at Police daily tasking

DRAFT Tactical Assessment v0.1

RESPECT LOGO

Date: 04/02/08

DRAFT DRAFT DRAFT DRAFT

Not protectively marked

ensures that the any reports are quickly communicated to the unit. These reports are then reviewed against the historical data to look for trends and patterns. At this point the partnership approach begins to pay an early dividend with locations and individuals being cross-referenced to complete a picture of activity. A fortnightly MAPS Unit meeting provides an opportunity to review the last two weeks of activity in preparation for the Police Tasking and Co-ordination Meeting. This gives partners a chance to influence to tasking and co-ordination of police resources in tackling an agreed set of priorities, based on crime and ASB themes and priority locations.

The office provides a workspace for officers from the following partners, each can directly access their own networks allowing for real-time discussion.

Partner (Number of officers)

CDRP (2)

Carlisle City Council (1)

Eden District Council (1)

Impact Housing Association ~ Independent Domestic Violence Advisors (2)

Carlisle Housing Association (1)

Cumbria Constabulary (7)

Cumbria Fire & Rescue Service (1)

The office has become a focus for the work of the partnership and provides a real 'shop front' for the Carlisle and Eden CDRP.

Carlisle ASB Coordinator Post

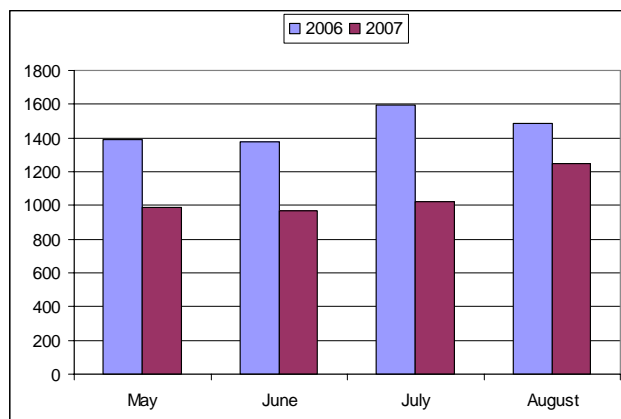


Figure 2: Comparison of counts of ASB 2006 to 2007

DRAFT Tactical Assessment v0.1

Date: 04/02/08

RESPECT LOGO

DRAFT DRAFT DRAFT DRAFT

Not protectively marked

The ASB Coordinator Post was re-appointed in May 2007 after a long gap in service. During that time the job description was re-written to reflect the change in need from the partnership.

The overall purpose of the post is to be an integral part of the North Cumbria Anti Social Behaviour Unit and to co-ordinate the multi-agency response to Anti-Social Behaviour throughout the Carlisle and Eden Council areas.

The key areas of responsibility are:

- To co-ordinate the multi-agency response to Anti-Social Behaviour in the Carlisle District area. To provide assistance to the Eden Community Involvement Officer in delivering the same outcome.
- To provide comprehensive support to the Carlisle & Eden Crime & Disorder Reduction Partnership (through the Anti Social Behaviour Task Group) in the development and implementation of Carlisle & Eden's Anti Social Behaviour Action Plan, ensuring that anti-social behaviour is properly reflected in the overall strategy. That the anti-social behaviour element of the strategy is effectively delivered.
- To ensure an efficient and effective response to anti-social behaviour across the districts of Carlisle by means of policy development.
- To act as the main point of contact in Carlisle districts for issues relating to anti-social behaviour.

The post has been the key link between the Police Tasking & Co-ordination process and partners. The main packages of work completed so far are:

- Development of ASB & Prevent & Deter Intervention Panel spreadsheet as a way of managing the most prolific ASB perpetrators.
- Researching ASB priority locations such as:
 1. Dowbeck Road
 2. Leaborne Road
 3. Brookside
- Developing the evidence files and research required for Designated Public Place Order in Carlisle City Centre and Denton Holme.
- Co-ordinating the placement of the signage for the DPPO.

DRAFT DRAFT DRAFT DRAFT

Not protectively marked

- Developing a new protocol between the City Council and the Fire & Rescue Service to tackle unofficial bonfires.

This post is on a fixed term contract, finishing in April 2008.

ASB Witness Support Officer

Changes in post holder over the last year have meant that this role has not been fully utilised over the year. The February 2007 Report outlines the key functions that the post delivers supporting a new approach for victims of ASB. Victim Support Cumbria hosts the post; it is seated in the Carlisle Housing Association office in Carlisle.

The project with the support and backing from colleagues at Victim Support is constantly recruiting and training new and dedicated volunteers throughout the Northern Division and County wide- and as such the project can tap into the existing resource of trained volunteers as well as the new. And the ASB training is being offered to all Victim Support Divisions.

We have a number of new volunteers waiting for the next Victim Support Core training, who will also attend the ASB training. The date for this training is yet to be confirmed, though we have a number of volunteers waiting to be trained.

The training looks at – what is ASB? The effects of ASB, Supporting Victims/witnesses, Tools and powers, Practical Help, and handling referrals. The training is evolving with the project- looking at case studies of witnesses that have been supported, and is reacting to new developments, which will have a knock-on effect to witnesses. The training is designed and aimed at both new and existing volunteers.

94 witnesses/ victims of ASB & Criminal damage have received support to date.

Of which 7 new referrals are for February. And received 15 enquiries about the project.

Referrals	
Pre-court visits	0
Court support	0
Police referrals	1
Victim Support	1
YOT Team	0
Housing Associations	4

DRAFT Tactical Assessment v0.1

RESPECT LOGO

Date: 04/02/08

DRAFT DRAFT DRAFT DRAFT

Not protectively marked

Law Centre	0
Advertisement	1
Total	7
Repeat incidence	3

Figure 3 : February referrals

Feedback received during February from Victims /witnesses included:

'Without the help and support of the project we would never have plucked up the courage to attend court.' – Greengarth Carlisle

'It made such a difference been guided through the stressful process. All is well now.' Pennine Way , Harraby

The daily contact with victims of ASB enabled the post to support victims in submitting entries to the national 'Taking a Stand Award'.

This post is on a fixed term contract, finishing in April 2008.

Community Involvement Officer (Eden)

This post began in April 2007 and is based solely in Eden. The post has been focusing on ASB, Criminal Damage and Violent Crime.

Feedback is constantly sought and received in relation to projects, which are undertaken by this post. The projects range from the Kickabout Scheme, which engages with 11 to 17 year olds to other initiatives, which involve a number of agencies focussing on alcohol related crime and anti social behaviour. Feedback to date from those who have been involved in the various projects (including the public and those who have assisted in the delivery of the projects) has been supportive as to the relevance and effectiveness of each project.

The post of community involvement officer allows the council to effectively deal with issues, which are significant to communities in the district. These include anti social behaviour and crime. The post supports the community safety officer and co-ordinates and manages initiatives so that an effective delivery is made. Without the support of the post it is unlikely that the council would be able to effect its obligations under section 17 of the Crime & Disorder Act 1998.

DRAFT DRAFT DRAFT DRAFT

Not protectively marked

The post has been responsible (with other agencies and officers) in the effective development and delivery of the following initiatives:

- The Kickabout Scheme
- Licensee Training
- DPPO for Eden
- Test Purchasing
- Multi Agency Visits to licensed premises
- Best Bar None Scheme
- Taxi Marshalling
- creation of new pubwatch in Kirkby Stephen and Appleby
- review and development of Penrith pubwatch and involvement with Appleby Fair (licensing strategy)

A major part of the role relates to alcohol and by using the above mentioned initiatives, it is envisaged that there will be a noticeable reduction in alcohol related anti social behaviour and violence in the coming months.

Redeployable CCTV Cameras

The CCTV subgroup decision to move to redeployable CCTV cameras has provided the partnership with a 'rapid deployment' option. The project was launched in December 2006 with four cameras deployed to priority locations. Some of the locations where these cameras have been active over the last year are:

- Borland Avenue, Botcherby Ward
- Holmes Avenue, Currock Ward
- Dowbeck Road, Castle Ward
- Diggle Road, Denton Holme Ward
- Wigton Road, Castle Ward
- Appleby Fair, Appleby
- Brampton Live, Brampton
- Brougham Street, Penrith
- Botchergate, Castle Ward

DRAFT DRAFT DRAFT DRAFT

Not protectively marked

Throughout this period the CCTV Subgroup considered up to ten alternative locations, using the local knowledge of the LPT Problem Solving Officers and the latest counts of crime and ASB the locations for deployment are agreed. These locations are reviewed every three months.

In total the 4 cameras have secured evidence to support 3 court cases against persistent perpetrators of ASB.

The local impact of these cameras is illustrated through the evaluation of the use of the camera at Holmes Avenue. The LPT Problem Solver, Martin Park, completed this evaluation it provides an excellent case study of just how effective this project can be.

CASE STUDY 1: Evaluation of the Effectiveness of Rapid Deployment CCTV Sited on the Junction of Mount Pleasant Road and Holmes Avenue, Carlisle.

One of the CDRP Rapid Deployment CCTV cameras has been located on the junction of Mount Pleasant Road and Holmes Avenue, Carlisle since 21st December 2006. This initial location was chosen because of information from a number of sources indicating that the area was a hot spot for anti-social behaviour, disorder and associated offences.

Having responsibility for the recovery of footage from this camera I can recall having to conduct site visits to view/download incidents on 8 occasions. I am aware that this data has been used twice to progress Police enquiries. One incident, which was recorded on the new system on 17th February 2007, related to a call from a local resident on Holmes Avenue that 15 people were fighting on the street. During this incident a vehicle was damaged and a youth assaulted. Three youths were subsequently arrested as a result of the CCTV footage and charges were brought against two. The two individuals charged with offences relating to this incident pleaded guilty to criminal damage, common assault, a public order offence and breach of Anti-Social Behaviour Order with regards to this incident. As a result of this and other charges one offender was sentenced to 6 months in a Young Offenders Institute. The other offender still has an offence of criminal damage and public order pending at Court. Information disclosed on the camera has also assisted us in applying for or varying conditions on some recent Anti-Social Behaviour Orders.

Local Community staff have stated to me that they believe the problems in the Mount Pleasant Road and Holmes Avenue areas have improved substantially since the start of 2007. I have researched Police systems to compare the number of crimes recorded and incidents reported for the period of January 2007 to June 2007 against the same data for 2006 at the two locations.

DRAFT DRAFT DRAFT DRAFT

Not protectively marked

Crimes Recorded (All categories)							
Date	Mount Pleasant Road	Holmes Ave.	Total	Date	Mount Pleasant Road	Holmes Ave.	Total
01.06.07 – 30.06.07	2	0	2	01.06.06 – 30.06.06	2	0	2
01.05.07 – 31.05.07	6	0	6	01.05.06 – 31.05.06	10	3	13
01.04.07 – 30.04.07	4	0	4	01.04.06 – 30.04.06	9	4	13
01.03.07 – 31.03.07	10	0	10	01.03.06 – 31.03.06	7	3	10
01.02.07 – 28.02.07	8	7	15	01.02.06 – 28.02.06	7	1	8
01.01.07 – 31.01.07	0	0	0	01.01.06 – 31.01.06	5	2	7
Total	30	7	37		40	13	53

I have highlighted the above table with the points which I believe are important. Firstly, the total crimes recorded during the periods being compared shows a reduction of 16 in 2007 (37 records in 2007 compared to 53 in 2006) which is a 30 % decrease. Secondly, the data recorded during the last three months show that recorded crimes are reducing and are fewer compared to the same data in 2006. One anomaly which stands out is 15 crimes recorded during February 2007. This figure is the highest number for all the months in 2006 and 2007 being evaluated.

The anomaly highlighted in February 2007 could be explained by the fact that the CCTV camera was removed between the 20th February and 7th March. This was as a result of the lamppost to which the camera was attached being damaged to the extent that it detached from its base. This was an intentional action by the individuals concerned to remove the camera and the footage shows the lamppost being shaken vigorously. This incident occurred after a number of arrests relating to the incident described above on the 19th February. When confronted by the fact there was evidence from this camera one of those arrested said words similar to “We didn’t think that the camera worked”.

The camera was subsequently restored in the same place and the Council provided a reinforced lamppost. When the camera was not present local residents stated to the local Community Officer and me that they had noticed its absence and they did not feel as safe as when it was present. A number of people enquired when it would return.

DRAFT DRAFT DRAFT DRAFT

Not protectively marked

Month	HOLMES AVENUE	JCT MOUNT PLEASANT/HOLMES AVENUE	MOUNT PLEASANT ROAD	Total
Jan-06	6	1	15	22
Feb-06	3		17	20
Mar-06	6		14	20
Apr-06	12		28	40
May-06	10		30	40
Jun06 (up to 25th)	5		16	21
Jan-07	3		10	13
Feb-07	15		25	40
Mar-07	2		21	23
Apr-07	1		42	43
May-07	4		22	26
Jun07 (Up to 25th)	3		13	16
Total	70	1	253	324

Date period	HOLMES AVENUE	JCT MOUNT PLEASANT/HOLMES AVENUE	MOUNT PLEASANT ROAD	Total
01/01/06 - 25/06/06	42	1	120	163
01/01/07 - 25/06/07	28	0	133	161
Total	70	1	253	324

The above table shows the amount of incidents on Mount Pleasant Road and Holmes Avenue between 1st January 2006 and 25th June 2006 and 1st January 2007 and 25th June 2007. Worthy of note is a reduction of incidents in May and June 2007 as compared with the same period the previous year, however, the overall picture is not as convincing with only a reduction of a total of 2 incidents in 2007. Again, the anomaly in February can be seen and shows an increase in activity.

DRAFT Tactical Assessment v0.1

RESPECT LOGO

Date: 04/02/08

DRAFT DRAFT DRAFT DRAFT

Not protectively marked

Overall, the results show that recorded crime is less compared to the previous year, recorded incidents are less (albeit only a minor amount - it hasn't increased!) but most importantly feedback from local residents is that they feel safer and that the area has improved. A local elderly resident recently stated to the Community Officer that she is now unafraid to walk along Mount Pleasant Road to go to the shop. The rapid deployment CCTV has undoubtedly contributed to this current situation, however, it should be noted that other significant work has been undertaken in this area *including*, a "Street safe" event, the eviction and tenancy enforcement of certain problematic residents and the successful application for 8 Anti-Social Behaviour Orders against youths who congregated in and around this area.

Police Community Support Officer Contribution (PCSO)

The CDRP made a contribution to the early recruitment of PCSOs in North Cumbria to ensure that it received an allocation of trained officers in the first available batch. The first Police Community Support Officers were recruited in September 2004 and in July 2007 Cumbria Constabulary announced that had recruited, trained and deployed an additional 87 Police Community Support Officers (PCSOs) providing a total of 105 PCSOs serving the communities of Cumbria. The project was launched in Carlisle, Brampton, Appleby and Penrith. Some individual wards do not have PCSOs but each area of the BCU will have a PCSO, even if they have responsibility for several wards.

Priority 1 of Cumbria Constabulary's aims is 'to reduce overall crime, with a focus on violent crime, drug crime, vehicle crime and burglary.'

Priority 2 is 'to develop Neighbourhood Policing across all communities, ensuring that we address locally identified community priorities including fear of crime, anti-social behaviour and disorder.

From April to September 2007 there were 25 community problems addressed across North Cumbria, demonstrated by use of 'Key Individual Network Survey' (KINS) results. Fresh surveys completed during the various initiatives show a general increase in satisfaction levels regarding fear of crime and feelings of security. The surveys show a general feeling that there is increased police (including PCSO) visibility, which has had a positive impact on residents. Year on year and quarter on quarter, there has been a steady reduction in all the priority crime categories. The evidence is that crime has dropped and satisfaction rates from the community regarding fear of crime and police community presence has increased.

PCSOs work within the community and alongside police officers. By targeting anti-social behaviour, which can often escalate into crime, crime itself is reduced. Some specific examples of the impact of PCSO activity are outlined in the following case study.

DRAFT DRAFT DRAFT DRAFT

Not protectively marked

The project is ongoing and in August 2007 North Cumbria completed its PCSO recruitment process. More PCSOs are due to be recruited in 2008 to stabilise numbers, as several PCSOs have gone on to join the regular police.

Public response can be seen in the gathering of KINS results, all of which show that neighbourhoods with PCSOs enjoy decreased anti-social behaviour and a greater sense of security. Offenders and potential offenders are benefiting from PCSO led initiatives such as the creation of youth football teams within the area, which encourage positive interaction with the police and introduction to and use of, local sports facilities. Many of the initiatives are long term and the work is of an on-going nature. Crime and incidents of anti-social behaviour have decreased noticeably but there are still gains to be made that will benefit the local community.

PCSOs have added an invaluable and necessary dimension to the police family and the nature of neighbourhood policing in North area. There has been real impact visible in the reduction of crime and the greater sense of security experienced by local residents.

PCSOs do the work traditionally performed by 'community' police officers; they work with partner agencies, problem-solve and integrate with the communities they serve.

Case Study 2: PCSO activity

In April 2007, PCSOs Janet Allinson and Helen Fortey began to address anti-social and youth disorder in the Kirkby Stephen area. Through liaison with partners including Eden District Council, Eden Housing and local schools, football matches and litter-picks were conducted with local youths. The employment of some restorative justice techniques, including youths cleaning off graffiti that they have been responsible for, there has been a marked improvement in that area.

In November 2007, PCSO John Nicholson was made aware of traffic and speeding issues in the Scaws, Frenchfield and Carleton areas in Penrith. PCSO Nicholson utilised KINS to identify the problem areas and then liased with partner agencies. Through his work with the Scaws residents Association and the Highways agency, there are plans for traffic calming measures to deal with long-term issues. In the short term, high visibility patrols are deployed at specific times to noticeably reduce the problem.

DRAFT DRAFT DRAFT DRAFT

Not protectively marked

Young Fire-fighters

The Young Fire-fighters or Phoenix Project as it is also known began in March 2005. The focus of the project is on ASB and Criminal Damage, especially arson.

Positive feedback on the project has been received from Schools, Connexions, police, students, parents; and the fire and rescue service. Over the last year the project has run courses throughout Carlisle and Eden, attracting young people identified as benefiting from a challenge.

The specific locations for the courses are;

- March 2007 – May 2007 Carlisle (Caldew and Morton Schools)
- September 2007 – November 2007 Eden (Samuel King, Alston and Appleby Grammar schools)
- January 2008 – March 2008 Carlisle (Newman and NCTC Schools)
- April 2008 – July 2008 Eden (schools TBA)

The young fire fighters project has been well received by all the schools involved, it has been effective in providing an environment for personal development for young people. It has also been used as a vehicle to highlight and educate young people on the safety issues associated with roads and driving, home fire safety and water safety. It has raised the profile of the work being carried out by the CDRP and the fire service by gaining media interest in the area of early intervention work with young people. The young fire-fighters scheme has opened up opportunities and interest for the fire service to become more involved in youth engagement.

Current course costs are £ 3800 per course with 12 students being offered places on a scheme that engages them for 9.5 days that equals less than £35 per student per day. We feel that this is cost effective.

Alleygates

The CDRP and the Carlisle Local Committee jointly funded four pilot Alleygate sites in Carlisle. The location of these pilots are:

- Alley running from Edward Street to Flower Street;
- Alley running from Flower Street to Grey Street;
- Alley between rear of houses Crummock Street and Bassenthwaite Street;
- Alley between rear of houses Crummock Street and Bassenthwaite Street and Dowbeck Road.

DRAFT DRAFT DRAFT DRAFT

Not protectively marked

These sites have been implemented this year and in each case a coordinated partnership launch was held to mark the closing of the gates. The pilot sites were selected to tackle ASB and criminal damage. The will also help prevent burglary as many of the back lanes have been a means of entry.

Feedback from the four pilot sites has been very positive as illustrated by tables below. As the gates are a long-term intervention the benefit is likely to continue for years to come.

Q.2 Since the alleygates were installed have you noticed any changes?[DO NOT PROMPT UNLESS STRUGGLIG FOR IDEAS]

Choice	Count	Percent of Sample Asked	Percent of Total Sample
Cleaner back alley	17	27.9%	27.9%
Less graffiti	0	0.0%	0.0%
Less dog fouling	0	0.0%	0.0%
Reduced noise	21	34.4%	34.4%
Increased feeling of safety	1	1.6%	1.6%
Less anti-social behaviour	18	29.5%	29.5%
Problems with refuse collection	0	0.0%	0.0%
Difficulty with access to back alley	0	0.0%	0.0%
Other (tick and type in answer)	17	27.9%	27.9%

Q.3 How satisfied or dissatisfied are you with the appearance of the alleygates?

Choice	Count	Percentage of Sample Answering	Percentage of Sample Asked	Percentage of Total Sample
Very Satisfied	54	90.0%	88.5%	88.5%
Somewhat Satisfied	1	1.7%	1.6%	1.6%
Neutral	5	8.3%	8.2%	8.2%
Somewhat Dissatisfied	0	0.0%	0.0%	0.0%
Very Dissatisfied	0	0.0%	0.0%	0.0%

DRAFT DRAFT DRAFT DRAFT

Not protectively marked

Q.6 Overall, to what extent, if at all, do you feel the area has improved since the introduction of alleygates?

Choice	Count	Percentage of Sample Answering	Percentage of Sample Asked	Percentage of Total Sample
Improved Significantly	21	35.0%	34.4%	34.4%
Improved Somewhat	23	38.3%	37.7%	37.7%
Stayed the Same	15	25.0%	24.6%	24.6%
Deteriorated Somewhat	1	1.7%	1.6%	1.6%
Deteriorated Significantly	0	0.0%	0.0%	0.0%

Figure 4: Feedback on Alleygates

The project has made a difference on several levels. Crucially, there has been a reduction in incidents of ASB in the Lower Super Output Area (LSOA) in which they have been sited. This is illustrated in the figure below.

Lower Super Output Area	April 06 to December 06	April 07 to December 07	Difference	Change
E01019236	263	185	78	30% reduction
E01019207	213	192	21	10% reduction

Figure 5: Alleygates and ASB incidents

The work involved in implementing the pilots has meant the development of a local network of residents who can now be contacted as any new issues arise. As a project it is as much about community development as it is about community safety.

DRAFT DRAFT DRAFT DRAFT

Not protectively marked

Acquisitive crime

The partnership response to acquisitive crime is recorded in the Acquisitive Crime Task Group.

Neighbourhood Watch Development Officer

The approach to the development of Neighbourhood Watch in Cumbria has been combined into a larger project within the Safer and Stronger Thematic Partnership of the CSP. This has provided each BCU area (North, South and West) with a development officer and a countywide development officer to ensure that this approach becomes self-funding.

The North Cumbria NHW Development Officer has been in place for throughout the year, the post has received year on year funding since 2005. The post has focused activity on the following crime categories:

- Burglary dwelling,
- Vehicle taking,
- Theft of pedal cycles,
- Vehicle interference,
- Damage to vehicles. (NB This is a criminal damage offence)

He has recently introduced the Farmwatch Trespass scheme; this tackles a small element of ASB but provides a clear deterrent to criminals seeking to pass off suspicious activities under the guise of unintentional trespass.

Cumbria Neighbourhood Watch (CNWA) has just undertaken an audit of its membership in an effort to develop a baseline from which it can develop performance indicators & respond to the needs identified by its members. CNWA will produce a summary of the report in due course.

Some of the key activity of the post holder is presented below:

- Postholder has enabled NHW membership have supported 5 Streetsafe initiatives
- Farmwatch Smartwater Project delivering 289 property marking kits to farmers so far.
- Developed Farmwatch, Neighbourhood Watch, Hotelwatch & Campwatch
- We have delivered 181 voice connect messages totalling 39,455 individual messages have been sent alerting watches to suspicious activity and organised criminal activity.

DRAFT DRAFT DRAFT DRAFT

Not protectively marked

- Bogey volunteer Action Team (BAT) Doorstep Crime Project for Cumbria Neighbourhood Watch Association which took 1st place in Cumbria Community Awards – Safer Community Category. We have 21 BAT Neighbourhood Watch volunteers.
- The Farmwatch Trespass Scheme was launched on with 115 Farmers signing up to the initiative. This followed a consultation by CNWA asking members if they would like to participate in the scheme. The launch was covered by Border TV & the Cumberland News. Trespass will warn named prolific rural criminals that trespass & harassment will not be tolerated. They will be warned by letter that should they be found to have trespassed on any of the farmers on the Trespass list action would be taken. It is anticipated that this could lead to rural ASBOs.
- CNWA has just developed a new website. This was launched during National Neighbourhood Watch week beginning 15th October as part of a range of coordinated activities throughout Cumbria. CNWA is a charitable body who have just become a Company by Guarantee; which is managed by a volunteer Board of Directors with support from the neighbourhood Watch Development Officers & Police Partnership Manager.

Safer Homes

The Safer Homes project has been running in Carlisle and Eden for over five years. It has attracted large donations in its early years but is now dependent upon the CDRP for the majority of its funding. The project is not to be confused with a very similar project funded by Carlisle Housing Association called 'Safe As Houses' and a nationwide Age Concern 'Handyvan Scheme'. Since its launch in 2003 the project has visited 2170 Clients, the vast majority being the elderly and vulnerable victims of crime.

The crime groups that the project is tackling are:

- Burglary dwelling
- Theft of pedal cycles
- Theft from person

The project also contributes to tackling violent crime and criminal damage through its work most notably by prioritising the needs of victims of domestic violence. The project has also taken referrals from the ASB Witness and Victim Support Officer specifically to victims of ASB suffering youth disorder and racial or hate related incidents.

DRAFT DRAFT DRAFT DRAFT

Not protectively marked

Customer satisfaction data is presented in figure 4 identifies the degree of safety customers feel after receiving a Safer Homes visit and intervention.

Figure 6: Safer Homes satisfaction survey results

Question	Net safe	Very Safe	Fairly Safe	Neither Safe nor Unsafe	Fairly Unsafe	very Unsafe	Don't know / Blank
How safe or unsafe do you feel inside your home during the day	88.40%	56.7%	34.3%	1.9%	1.4%	1.2%	4.5%
How safe or unsafe do you feel inside your home after dark	77.60%	40.7%	43.1%	4.5%	3.8%	2.4%	5.5%
How safe or unsafe do you feel outside your home during the day	78.40%	31.0%	50.7%	9.0%	2.3%	1.0%	6.0%
How safe or unsafe do you feel outside your home after dark	23.60%	12.9%	36.4%	16.4%	16.4%	9.3%	8.6%
How satisfied are you with the neighbourhood in which you live	66.20%	31.4%	42.9%	11.0%	6.4%	1.7%	6.6%

The scheme is currently funded by the CDRP until 31st March 2008. After which, continuation of the scheme will be dependant upon finding the required funding. If this scheme were to cease, the impact on the categories of victims highlighted in list A (shown below) would be considerable and it is anticipated that this would greatly affect the burglary, domestic violence and criminal damage figures as well as being detrimental to repeat victimisation rates, reassurance (specifically for the elderly) and Partnership initiatives such as StreetSafe would not be in a position to provide the same level of service/support in relation to practical crime prevention solutions.

DRAFT DRAFT DRAFT DRAFT

Not protectively marked

Referrals have been received from just over the border into Scotland and the West area of the county, which are both outside the scheme boundary (North Cumbria area). However, in all cases it was possible to refer the clients to Age Concern of schemes of a similar nature.

The scheme project has been successful across all the objectives, substantially increasing the number of people accessing CDRP services, producing tangible evidence of crime reduction and reassurance through the Safer Homes scheme, and improving cost effectiveness.

The projected cost per visit on application to the CDRP was £105.84 (500 visits per annum over two years). Previous costs varied, but the Homesafe scheme of £210.53 was set as a baseline.

- **Actual average cost per client = £99 ÷ 1084 (clients in the first two financial years) = £91.42**
- Potential cost saving to the CDRP of £210.53 - £91.42 = £119.11 x 1084
= £129,115.24

DRAFT DRAFT DRAFT DRAFT

Not protectively marked

Violent crime (alcohol related)

The partnership response to Violent Crime is presented in the Violent Crime and Disorder Task Group Action Plan.

Botchergate Experimental Road Closure Order

The Carlisle Local Committee passed the Botchergate Experimental Road Closure Order in November 2007. It is a joint project between the North Cumbria Casualty and Safer Highways Partnership (CRASH); the CDRP; and the Local Committee. The order came into effect on the 17th January 2008 on completion of the necessary gates, posts and signage. The experimental order closes Botchergate from Tait Street to The Crescent between the busiest nights and hours of the nighttime economy.

The experiment will last for 18 months at the end of which the Local Committee will consider the impact of the closure. It is within their power to set a permanent closure for hours within those specified in the experimental order.

This project has not been asked the standard questions, as it is far too early to evaluate its impact. A weekly meeting of stakeholders is reviewing the impact of the order.

DRAFT DRAFT DRAFT DRAFT

Not protectively marked

Domestic Violence

The Carlisle and Eden CDRP has been involved in the delivery of many of the key interventions designed to tackle Domestic Violence. The launch of a LetGo! Service in Carlisle City has plugged the gap in provision arising from the specially funded LetGo! Eden and Rural Carlisle Project. The local Domestic Violence Task Group provides an essential working group for the local and countywide approach.

Let Go Carlisle

The Let Go Carlisle service is an addition to the established Eden and Rural Carlisle Let Go Service. The service in Carlisle ensures that throughout North Cumbria there is a minimum provision of 'independent domestic violence advocacy (IDVA). The service is funded in part by the CDRP, the posts are hosted by Impact Housing Association, they are based within the MAPS Unit (Civic Centre).

The Carlisle Let Go project was launched in June 2007 and became fully operational September 2007. The project primarily tackles all violent offences against the person namely:

- common assault,
- other wounding
- and wounding endangering life.

Approximately 60% common assault, 19% other wounding, 1% wounding endangering life. Roughly 20% of project activity is in relation to cases where no crime has occurred.

No formal evaluation has taken place as yet as the project is in its early stages. However, feedback from Crown Prosecution Service, Cumbria Constabulary, and Her Majesty's Courts Service (Cumbria), as represented on the Specialist Domestic Violence Court Steering Group, indicates that the existence of the service, alongside the pre existing project "Let Go" in the rural areas, has had a vital role to play in the increase from 43% to 83% of the proportion of successful prosecutions in cases of domestic violence in the North of Cumbria over the last twelve months.

The project will be the subject of an internal evaluation by the service, which dip samples ten per cent of victims with whom contact has been made by a domestic violence adviser. This will commence early in the New Year. Results from the ongoing evaluation of victims having had contact with the Let Go Domestic Violence Service in Eden and Rural Carlisle, also managed by Impact Housing Association, indicate that almost one hundred per cent of service users are satisfied or very satisfied with the service generally, with the advice given and support, and with the attitude and behaviour of the domestic violence advocates. Impact Housing Association will

DRAFT DRAFT DRAFT DRAFT

Not protectively marked

also be carrying out an internal project evaluation and the results will be available in Autumn 2008.

All victims of incidents of domestic violence, within the project area, which have been reported to the police and which have resulted either in an arrest or where the case is assessed as high risk or very high risk, receive direct contact from a domestic violence adviser. Close support is provided in order to ensure individuals affected have access to accurate information and are able to make suitable decisions about their situation. All individuals where a case is going to court receive a service, and the court itself is updated by the adviser in relation to the victim's situation, including information which impacts on proposed bail conditions or remand. Where a case is high risk it is referred to Multi Agency Risk Assessment Conference (MARAC) chaired by Cumbria Constabulary, for a multi agency response to protect the victim and any children. In my view, despite the fact that the Carlisle service is still in early days, the project has already had a major impact on the support provided to victims of domestic violence and their children in the City of Carlisle. All cases going to MARAC where children are involved receive contact from the Children's Domestic Violence Worker (based at the mother project at Penrith) for direct support. The difference the project has made is in relation to:-

- Advice and support for victims to make informed decisions
- Enhanced safety for victims and their children, particularly in a crisis and at point of separation from an abusive partner
- Support to the Specialist Domestic Violence Court, with attendant rise in successful convictions as highlighted above
- Close working with Cumbria Constabulary and the Public Protection Unit to address victim safety and drive up the numbers of arrests in domestic violence incidents. Over the Christmas and New Year period there will be additional staff cover at weekends and bank holidays to ensure that the enhanced police response over this period is backed up by the advocacy service and ongoing support for victims and children.
- Working to reduce the numbers of repeat victimisations. (Initially it is expected that repeats will rise as victims demonstrate increased confidence in police and other agencies, before repeats start to drop).
- Support to and referrals from MARAC (roughly 80% of MARAC actions are for the Independent Domestic Violence Advisers)
- Early indications are that at least 50% of high risk cases within Carlisle City referred to MARAC alcohol is a factor for either victim, perpetrator or both, and the work of the project therefore ties in closely with the primary aim of the Violent Crime and Disorder Task Groups – "To reduce alcohol related violent crime and disorder across the Carlisle and Eden area". Close links exist with Pubwatch and the current plan is for perpetrators of domestic violence to come within the remit of Pubwatch if alcohol consumption on licensed premises has been a factor in the assault.

DRAFT DRAFT DRAFT DRAFT

Not protectively marked

- Direct access to a 36 week domestic violence programme for all individuals who recognise that their behaviour towards a partner is abusive and wish to change.

The project is considered very effective at supporting the victims of domestic violence. The funding of one post by the CDRP has enabled match funding for an additional post by the Henry Smith Charity and Hestia. This then ensured a pump-priming grant of £20,000 from Government Office North West to support the Specialist Domestic Violence Court in North Cumbria.

Prolific Offending ~ Prolific and Other Offending Strategy

Scafell Project

The Scafell Project is a countywide project built along the lines of our groundbreaking 'PROP' Project. It was launched in April 2007 and covers North Cumbria.

The project focuses upon the top twenty or so prolific offenders active in crime groups such as:

- Theft from motor vehicles
- Burglary dwelling

It has made an impact primarily on acquisitive crime. The project is hosted by Cumbria Probation Service and is run by a local Prolific and Other Priority Offender Joint Agency Group.

North Cumbria has supplemented the countywide project with an additional outreach worker. This is to ensure continuity with the 'PROP' Project in the first year of the Scafell Project.

DRAFT DRAFT DRAFT DRAFT

Not protectively marked

Glossary

APACS	Assessment of police and community safety
ASB	Antisocial behaviour
ALL ASB Incidents	All the antisocial behaviour incidents recorded using the National Incident Recording Standard Codes.
BCS	British Crime Survey
BCSC	British Crime Survey Comparator Crimes, basket of crimes that link to the British Crime Survey
BCU	Basic Command Unit
BIAD	Burglary in a dwelling
CCTV	Closed Circuit Television
CDAAT	Cumbria Drug and Alcohol Action Team, Cumbria DAAT (DAT)
CDRP	Crime and Disorder Reduction Partnership
CRAC	Carlisle Retailers Against Crime
CRASH	Casualty Reduction and Safer Highways
CSP	Countywide Strategic Partnership
Control Strategy	Current police strategy with priorities and broad tactics
CuPS	Cumbria Partnership Support
DIP	Drug Intervention Programme
DV Board	Domestic Violence Board
DVEC	Domestic Violence Enforcement Campaign
DVLA	Driver and Vehicle and Licencing Agency
FDR3	Coded as 'secondary Fire'
GONW	Government Office NorthWest
GP Prescribing	General Practitioner Prescribing
IQUANTA	<p>IQUANTA is the homeoffice web-based site with performance data for comparison between Police BCUs and CDRPs. Carlisle and Eden CDRP is presented as two separate CDRPs in two different most similar family groups. The groups that Carlisle and Eden are compared too are presented below.</p> <p>Carlisle Group</p> <p>Dyfed Powys – Carmarthenshire, Devon & Cornwall – Kerrier ,North Wales - Gwynedd Kent – Dover, South Wales - Neath & Port Talbot, Cumbria – Allerdale, North Wales – Conwy, North Yorkshire – Scarborough, Suffolk – Waveney, Cheshire - Crewe Staffordshire - East Staffordshire, North Wales – Wrexham,</p>

DRAFT DRAFT DRAFT DRAFT

Not protectively marked

	Durham – Derwentside, Cambridgeshire - Peterborough UA Eden Group Dorset – Purbeck, North Yorkshire – Ryedale, Devon & Cornwall - South Hams, Devon & Cornwall - West Devon, Derbyshire - Derbyshire Dales, Cumbria - South Lakeland, North Yorkshire – Craven, Dorset - West Dorset, Gloucestershire – Cotswold, Devon & Cornwall - Mid Devon, Warwickshire - Stratford upon Avon, Leicestershire – Melton, Norfolk – Breckland, West Mercia - Herefordshire
JAG	Joint Agency Group, local and countywide partnership for prolific offenders
KIN	Key Information Network
LAA	Local Area Agreement
LetGo!	Domestic Violence Project for Eden and Rural Carlisle funded through Northern Rock Foundation. LetGo! Carlisle applies the same approach in urban Carlisle but is funded differently.
LPT	Local Policing Team
LSOA	Lower Super Output Area. Unique geographies smaller than wards with a 9 character reference beginning with 'E'.
MARAC	Multi Agency Risk Assessment Conference
MAPS	Multi Agency Problem Solving, An approach considered good practice by GONW
MAPS Unit	Multi Agency Problem Solving Unit, A shared office for the purpose of multi agency problem solving
MINX	Motor vehicle nuisance project and police operation. This covers motorbikes and mini-motos.
OA	Output Area, they can be Upper, Middle or Lower. A nested set of geographies for the collation and presentation of statistics
PDU	Problem Drug User
PESTELO	Political, Environmental, Social, Technological, Economic, Legislative and Organisational changes that will impact on the partnership
PPO	Prolific and Other Priority Offenders
PPO JAG	Prolific and Other Priority Offenders Joint Agency Group
Poly Drug	The misuse of more than one substance at any one time
PROP	Prolific Offenders Programme, now Scafell Project
Qualifier	Unique code in the police incident recording system that links to a theme
Residential Rehab	Residential Rehabilitation, a form of substance misuse rehabilitation
Safer & Stronger Thematic Partnership	One of the partnership groups of the CSP. The key group for the CDRPs

DRAFT DRAFT DRAFT DRAFT

Not protectively marked

Scafell Project	Countywide partnership project to target the most prolific offenders
TNO	Total Notifiable Offences. All the offences reported and recorded by the police

DRAFT DRAFT DRAFT DRAFT

Not protectively marked

APPENDIX A ~ Tactical Assessment questions**Questions for Post or Project Manager**

- Does the project have any aliases?
- When was the project launched?
- Where was the project launched?
- What crime or/and ASB categories is the project tackling? (See A list)
- What is the split across the crime or/and ASB categories? (See B list)
- What percentage of the project has been delivered since the launch date up until 31/8/2007?
- Has there been any feedback on the project from: Hosts, General Public, Victims, Offenders?
- What is the likely impact of the project over the next six months? SAME LESS MORE NONE
- Which specific locations and dates has the project be deployed within over the period: 1st March 2007 > 31st August 2008?
- Are there any other locations that were considered BUT rejected during this period?
- In your own words , what difference has this project made?
- Do you feel that this project has been effective?
- Do you feel that this project has been cost-effective?

LIST A: Crime categories

BCS Comparator group	Tick	Percentage
Theft from a motor vehicle		
Burglary dwelling		
Vehicle taking		
Theft of pedal cycles		
Theft from the person		
Vehicle interference		
Other wounding		
Common assault		
Assault police		
Robbery		
Wounding endangering life		
Damage to vehicles		
Damage to dwellings		

DRAFT Tactical Assessment v0.1

RESPECT LOGO

Date: 04/02/08

DRAFT DRAFT DRAFT DRAFT

Not protectively marked

Damage to other buildings		
Other damage		
Arson		

LIST B ASB Categories

PRIMARY PROBLEM	Tick	Percentage
Youth Disorder - General		
Youth Disorder - Vehicle (Minx)		
Youth Disorder - Alcohol/Drug Related		
Youth Disorder - Throw Stones/Bricks		
Noise		
Youth Disorder - Games		
Vehicle Disorder		
Youth Disorder - Damage		
Rowdy/Nuisance Neighbours		
Racial/Hate Incident/homophobic/disability		

MORE DETAIL

Issue	Tick	Percentage
AS ROWDY AND INCONSIDERATE BEHAVIOUR		
AS ROWDY/NUISANCE NEIGHBOURS		
AS VEHICLE - NUISANCE/INAPPROPRIATE USE		
AS MALICIOUS / NUISANCE COMMUNICATIONS		
AS STREET DRINKING		
AS ANIMAL PROBLEMS		
AS HOAX CALLS TO EMERGENCY SERVICES		
AS ENVIRONMENTAL DAMAGE/LITTERING		
AS NOISE		
AS ABANDONED VEHICLE NOT STOLEN		
AS BEGGING/VAGRANCY		
AS INAPPROPRIATE USE/SALE / POSSESSION OF FIREWORKS		
AS SUBSTANCE MISUSE		
AS PROSTITUTION RELATED ACTIVITY		
AS TRESPASS		

DRAFT DRAFT DRAFT DRAFT

Not protectively marked

APPENDIX B ~ Project & Post List with scale and provisional costs

Project	Scale	Project Host
Alleygates	Large	Cumbria County Council
ASB Co-ordinator	Large	Carlisle City Council
ASB Witness Support Officer	Large	Victim Support
Botchergate Experimental Road Closure Order	Large	Cumbria County Council
Carlisle and Eden MAPS	Large	Carlisle City Council
CDRP Administrator	Large	Carlisle City Council
CuPS	Large	Cumbria Constabulary
Eden CCTV contribution	Large	Eden District Council
Eden Community Involvement Officer	Large	Eden District Council
IDVA Service	Large	Impact Housing Association
MARAC Administrator	Large	To be confirmed
NHWD Development Officer	Large	Cumbria Constabulary
PCSO contribution	Large	Cumbria Constabulary
Redeployable CCTV	Large	Carlisle City Council
Safer Homes	Large	Cumbria Constabulary
Scafell Project	Large	Cumbria Probation Service
Small Projects	Large	Various
Young Firefighters Scheme	Large	Cumbria Fire & Rescue Service
Accreditation Scheme(s)/ Safer Clubbing	Medium	Carlisle City Council
Appleby Streetlight	Medium	Eden District Council
Beaconsides School	Medium	Beaconsides School
Beat the Bogey Man	Medium	Cumbria Constabulary
Catholic Lonning	Medium	Carlisle City Council
DPPO Carlisle	Medium	Carlisle City Council
DPPO Eden	Medium	Eden District Council
Drive-way alerts	Medium	Cumbria Constabulary
Licensee Training	Medium	Eden District Council
MINX	Medium	Carlisle City Council
Morton Community Centre Fence	Medium	Cumbria Constabulary
Mosquito Alarms	Medium	Cumbria Constabulary
Nightsafe initiative	Medium	Cumbria Constabulary

DRAFT Tactical Assessment v0.1

RESPECT LOGO

Date: 04/02/08

DRAFT DRAFT DRAFT DRAFT

Not protectively marked

Pinpoint Tracker System	Medium	Cumbria Constabulary
Safe Scheme	Medium	Cumbria Constabulary
Safer Clubbing Audits	Medium	CADAS
Smartwater in schools	Medium	Cumbria Constabulary
StreetSafe	Medium	Cumbria Constabulary
Taxi marshalls	Medium	Carlisle City Council
Community Sign, Denton holme	Small	Carlisle City Council
Eden ShopWatch Radios	Small	Various
Glass Free Appleby	Small	Eden District Council
Graffiti Removal Equipment	Small	Carlisle City Council
NHW Development fund	Small	Cumbria Constabulary
Placebo Police Vehicle	Small	Cumbria Constabulary
Pubwatch Banning Order Posters	Small	Various
Talking Signs	Small	Carlisle City Council
Test Purchasing	Small	Cumbria Constabulary
Arson Audits	none	Cumbria Fire & Rescue Service
ASB & Prevent & Deter Panel	none	YOS
Blackwell Road/Currock Road BRICKS	none	Community
Carlisle ShopWatch	none	Various
Community Intelligence Assistant	none	Cumbria Constabulary
CRAC Partnership	none	Various
Crime Prevention Advice through Environmental design	none	Carlisle City Council
Neighbourhood Forum Attendance	none	Cumbria Fire & Rescue Service
Operation Acorn	none	Cumbria Constabulary
Patchwalks	none	Carlisle City Council
PPO JAG	none	Cumbria Constabulary
Safer Houses	none	Carlisle Housing Association
Truancy Sweeps	none	Cumbria County Council
Youth Agency attendance	none	Various