



# REPORT TO EXECUTIVE

## PORTFOLIO AREA: THE LEADER (PROMOTING CARLISLE)

---

Date of Meeting: 29 August 2006

---

Public

---

Key Decision: No

Recorded in Forward Plan:

No

---

Inside Policy Framework

---

Title: CUMBRIA LOCAL AREA AGREEMENT

Report of: DIRECTOR OF LEGAL AND DEMOCRATIC SERVICES

Report reference: LDS.54/06

### Summary:

The report sets out the current position on the evolving draft Local Area Agreement and explains the mechanism and timetable for bringing the Agreement to completion.

### Recommendations:

To consider the latest version of the draft Local Area Agreement and pass on any comments at this stage to the County Council and the Cumbria Strategic Partnership.

Contact Officer

John Egan

Ext 7004

Note: in compliance with section 100d of the Local Government (Access to Information) Act 1985 the report has been prepared in part from the following papers: Draft Local Area Agreement on CSP website; correspondence from Cumbria County Council's Director of Strategy and Performance

## **1. BACKGROUND INFORMATION AND OPTIONS**

- 1.1 Members will recall that both they and the Executive of the LSP considered the Local Area Agreement (LAA) draft Outcomes Framework on 9 and 12 June respectively and submitted comments back to the County Council on the draft as it then stood.
- 1.2 The County's Cabinet in turn submitted the draft Outcomes Framework to GONW on 29 June for their initial observations.
- 1.3 Overall, GONW commented favourably on the draft submission. They said that the mandatory outcomes were well covered and the cross-cutting themes set out in the LAA were a good start.
- 1.4 However, GONW flagged up the following points (and some others) which they said need further consideration :
  - How the voluntary and community sector will be influencing the LAA.
  - The impact of the Equality and Diversity Working Group on the LAA.
  - The need to clarify references to some outcomes and indicators which were blurred.
  - Which funding streams are intended for inclusion in the LAA.
  - The need to ensure good governance and importantly, that Leaders and decision makers in District Councils, the voluntary and community sector and other partners are all fully engaged in negotiating and delivering the LAA. This is a key point and challenge.
  - The proposal to have a 5<sup>th</sup> block in the LAA relating to cross cutting issues should be revisited as it "lacks cohesion".
  - The list of "stretch" targets is long and should be reduced to about 12.
  - The Economic Development Block included good partner "buy in" and had good links to the planning system.
  - The Children and Young People's block focussed well on key issues such as child protection and post 16 participation and issues on teenage pregnancy were worth developing.
  - The inclusion of domestic violence under Safer Communities was welcomed, as was the range of issues identified in the Healthy Communities block.

- The range of issues identified within the Improving Health block was welcomed by GONW.
- GONW welcomed the inclusion of affordable housing and the links to housing market renewal, but said that particular attention would need to be paid to measurement of performance.

## 2. Timetable to approval of the LAA

2.1 The current timetable to take the draft Agreement from where it is now to the worked up final detail for approval by the Cumbria Strategic Partnership and final sign off by the County (on behalf of all the partners) and GONW is as follows :

17 August 2006	Partner comments on working doc for initial draft to the County
6 September 2006	CSP Executive to agree initial draft
26 September 2006	CCC Cabinet to agree initial draft
30 September 2006	Submission to GONW of initial draft
3 November 2006	Partners comments on developing agreement back to the County (note that negotiations may be ongoing at this time)
22 November 2006	CSP Executive agree final draft
28 November 2006	CCC Cabinet agree final draft
1 December 2006	Final submission to GONW
15 December 2006	Approval from partners required for sign off
9 January 2007	CCC Cabinet sign off
18 January 2007	CCC Full Council sign off
10 February 2007	Ministerial sign off

2.2 Members will be aware that the LAA will be worked up to the point where it is ready for signature between now and the end of February next when it receives Ministerial sign off. During this period, there will be ongoing consultation on and redrafting of the Agreement between GONW and the County, representing all the partners and stakeholders in Cumbria. The process is summarised in the attached letter from the County's Director of Strategy and Performance set out in Appendix 1. Members will see that it is envisaged that the document will change during the detailed negotiation phase as the outcome targets are worked up and it may be necessary to present future reports to the Executive for comment and approval depending on the nature of any changes. The County Council letter envisages that, as far as all the District Councils are concerned, their respective Executives will have approved the final draft by the end of December next. A copy of the full current draft of the LAA taken from the County's website is attached as Appendix 2 and sets out the various targets and outputs as they currently stand. There is still a considerable amount of work to do to complete the draft to the point of signature however and the County proposes to update the draft on the website as it evolves and as the fine detail is worked up by the various Thematic Partnerships.

2.3 The proposed timetable may vary but will nonetheless be very tight and there is not much room for slippage. It is important to make sure that both the City Council and the LSP Executive have an input during the finalisation of the hard targets and financial provisions which will be part of the LAA and which will be worked up over the coming months as the draft Agreement goes through its anticipated redrafting stages. This will need to be achieved through various routes :

- Contacts with and membership of CSP's Thematic Partnerships which are going to be tasked with finalising the detail of the LAA.
- Working with our own LSP Priority Groups and Portfolio Holders and internal officer representatives so that we have an input into the evolution of the LAA as it is put together.
- Formal consideration by our Executive and LSP of any matters on which they are consulted.
- Keeping an overview on the position through our membership of the CSP where both the Leader and the Town Clerk and Chief Executive represent us.

The County Council are arranging a further briefing event on the development of the LAA on the 20 September in Carlisle and invitations will be sent out to members shortly.

### **3. CONSULTATION**

- 3.1 The tight timetable to some extent dictates this, but previous reports have been submitted to the Executive, Corporate Resources Overview and Scrutiny Committee and the Executive of the Carlisle LSP, as well as the CSP Executive upon which the Council is represented. It has also been considered by Officers of the City Council who represent the City on the various partnership working arrangements.

### **4. RECOMMENDATIONS**

To consider the latest version of the draft Local Area Agreement and pass on any comments at this stage to the County Council and the Cumbria Strategic Partnership.

### **5. REASONS FOR RECOMMENDATIONS**

To appraise the Executive of the current position regarding the LAA for Cumbria and afford them the opportunity to comment on the draft Agreement as it evolves.

### **6. IMPLICATIONS FOR STAFFING**

- Staffing/Resources – There will be a call on City Council staff time in order to support the LAA process as the Agreement is worked up and then to deliver the final targets selected for the LAA in due course, especially on the Council's LSP Support Officer.
- Financial – Details of the reward element in the 'stretch' targets in the LAA still have to be negotiated on behalf of the various stakeholders involved in the LAA and the financial impact on the Council will become clearer as those negotiations proceed.
- Legal – The County Council are to be the Accountable Body in respect of the LAA and to take the lead in signing it off with GONW, having used the Cumbria Strategic Partnership as a broad sounding board to construct the Agreement. Thought will need to be given as the Agreement evolves as to how any aspect of the Agreement needing consideration is correctly fed through both the Council's own processes and through the Carlisle LSP.
- Corporate – The various targets under the LAA should be geared to reflect the City Council's own corporate priorities wherever possible and, as the LAA stands at present, this appears to be the case.
- Risk Management – The County Council are to be the Accountable Body opposite GONW in respect of the LAA, and so the City Council should not directly be handling funding as such. Collectively, all the partners on whose behalf the LAA is signed will need to make sure that they have arrangements in place to enable the various targets

signed up with GONW to be delivered to ensure that the appropriate GONW funding is triggered.

- Equality Issues – Any work undertaken in delivering the targets on behalf of the City Council will be in accordance with the City's own equality policies. Given the composition of the other stakeholders under the Agreement, it is assumed that they will have similar equality policies in place.
- Environmental – Some of the targets, particularly those in respect of the Sustainable Communities block, do have environmental implications and are consistent with the City Council's own key priority of Cleaner, Greener, Safer.
- Crime and Disorder – Similarly, the targets set out in the Safer and Stronger Communities block have implications for crime and disorder issues and are consistent with the City Council's own objectives in this area.

## MEMORANDUM



County Council

The Courts, CARLISLE  
Cumbria, CA3 8NA

DATE 28 July 2006  
 Your Ref:  
 Our Ref: HB/LAA/Corres/CEs&Chairs  
 Ext No: 6687

**From:** Anthony Gardner, Director of Strategy & Performance

**To:** District Chief Executives  
 Chairs of Local Strategic Partnerships

**Cc:** Sue Stevenson, Policy – Strategic Partnership  
 Chairs of Thematic Partnerships  
 Lead Officers  
 LSP Co-ordinators

## LOCAL AREA AGREEMENT

In response to various comments about the length of time there is for partners to consider the initial draft of the LAA, the period for feedback has been extended.

A skeleton draft will be put on the CSP website on 4<sup>th</sup> August 06. This will be the most up to date outcome, sub- outcome and target information lead officers of the Thematic Partnerships can provide on that day. Further refined versions of this document will be posted on the website on 18<sup>th</sup> August and 1<sup>st</sup> September. The 1<sup>st</sup> September version will be used to provide the main body of a paper to the CSP Executive on 6<sup>th</sup> September.

General feedback on the evolving content of the LAA from you organisation will need to be with Helen Blake, Programme Manager for the LAA no later than 27<sup>th</sup> September. Specifically I am also seeking you executives endorsement of the draft agreement by 26<sup>th</sup> September (or exceptionally by 28<sup>th</sup> September if your executive is meeting on 27<sup>th</sup> or 28<sup>th</sup> September)

It would be extremely helpful if you now let me know:

- ✿ 1. The date that your executive is meeting to consider the draft. I believe the most appropriate date is noted on the table below. I would be grateful if you could confirm this with me.
2. The outcome of that meeting in writing



Director of Strategy and Performance – Anthony Gardner

Organisation	Executive Meeting Date
Furness LSP	8 <sup>th</sup> September
South Lakes LSP	9 <sup>th</sup> August
Carlisle LSP	1 <sup>st</sup> August
Eden LSP	5 <sup>th</sup> September
West Cumbria LSP	19 <sup>th</sup> September
Copeland Borough Council	15 <sup>th</sup> August
Allerdale Borough Council	30 <sup>th</sup> August
South Lakeland District Council	16 <sup>th</sup> August
Carlisle City Council	29 <sup>th</sup> August
Barrow Borough Council	2 <sup>nd</sup> August

The draft LAA will then submitted to GONW on 29<sup>th</sup> September.

The document will then continue to change as we enter the negotiation phase which will run until the beginning of December. GONW advisors will be speaking to Government departments about our proposals and feeding back any changes government wishes to see. It is hoped that the majority of discussion will be around stretch targets; which (whilst these are an important element of the LAA) will not make up a large percentage of the content. We may not therefore see significant changes to a large part of the agreement.

An amended agreement will go to GONW at the beginning of December. Again, partners may wish to provide feedback on the content at this point. I know you appreciate that the LAA will be a "live" document quite possibly up until ministerial sign off in February. This makes it extremely difficult to provide you with a date when the definitive version of the LAA will be available to you to take to executive meetings. However I anticipate that the County Council Cabinet on 9<sup>th</sup> January 2007 will recommend to County Council on 18<sup>th</sup> January that the agreement be approved. Again we will need to ensure that your executives have approved the final draft by the end of December.

I will ensure that we make updated versions of the document available on the CSP website as far as practicable. You can also contact Helen if you have a query about content who will sign post you accordingly.

*Anthony Gardner*

**ANTHONY GARDNER**  
**CORPORATE DIRECTOR STRATEGY AND PERFORMANCE**

**Contact Details:**

Helen Blake, LAA Programme Manager  
 Policy and Performance  
 Cumbria County Council  
 01228 606687  
 helen.blake:cumbriacc.gov.uk



*Director of Strategy and Performance – Anthony Gardner*



## APPENDIX TWO



**CUMBRIA STRATEGIC PARTNERSHIP**  
THE PARTNERSHIP VOICE FOR CUMBRIA



# **The Cumbria Agreement**

## **Draft Local Area Agreement for Cumbria**

Version	Date	Author
1	03/08/06	H Blake

## Contents

1. **Introduction** - this section will set out the vision and broad objectives of what partners in Cumbria intend to achieve through the agreement.
2. **Context** - geography, population, economy
3. **Strategic Approach** - this section will outline the broad approach taken in developing the agreement, including the way partners have engaged in the process. It will also cover the approach taken to ensure that issues such as sustainability and equity have been considered in the agreement.
4. **Key Issues** - this section will outline key issues, block-by-block, highlighting particular cross-cutting themes (in development)
5. **Appendix 1: Outcomes and indicators** (subject to change - further development ongoing)
6. **Appendix 2: Stretch Targets** (template included - targets in development)
7. **Appendix 3: Enabling Measures - business cases** (template included)
8. **Appendix 4: Statement of Community Involvement** ( in development)
9. **Appendix 5: Partnership working and Governance arrangements** (in development)
10. **Appendix 6: Performance Management Framework** (in development)
11. **Appendix 7: Key funding streams aimed at "narrowing the gap"**
12. **Appendix 8: Neighbourhood Renewal outcomes and targets** (in development)

## SECTION ONE

### Introduction

1. This document is the Cumbria Local Area Agreement and sets out some of the key priorities for Cumbria for the next three years. This Agreement will contribute to the achievement of agreed strategic objectives for Cumbria (*further detail to be inserted*). It has been developed through the Thematic Partnerships of the Cumbria Strategic Partnership and will provide the framework for a refreshed Sustainable Community Strategy.
2. *Further text in development*

## SECTION TWO

### Context

#### *Geography*

Cumbria is located in the north west of England. It is the second largest County in England with a land area of 6,767 km<sup>2</sup>. It's boundaries stretch from Morecambe Bay in the south to the Solway Firth and the Scottish border in the north. The largest settlements in the County are Carlisle, in the north east corner, and Barrow in the south west. Other large towns include Whitehaven, Workington, Kendal and Penrith. The Lake District National Park, and part of the Yorkshire Dales National Park, is located in the County.

The County is a two-tier local authority area comprising Cumbria County Council and six District Councils: Allerdale Borough Council; Barrow Borough Council; Carlisle City Council; Copeland Borough Council; Eden District Council; and South Lakeland District Council.

Cumbria is the only County in England who's entire land area is more than 50 km from a settlement with a population of over 100,000. The West Coast Main Line railway runs through the County, as does the M6 motorway.

#### *Population*

Cumbria's resident population is 494,800 and has been growing slowly over recent years. Over half of this population lives in areas classified as rural, compared to less than a fifth in England overall. The County's population has been ageing at a much faster rate than the national average with the number of 15-29 year olds falling by a quarter since 1981 and the number of over 85 year olds doubling. These trends are forecast to continue for the foreseeable future with the fastest growth in rural parts of the county.

#### *Economy*

Cumbria's economy generates around £6bn of Gross Value Added per year. Its overall GVA growth rate since 1995 (23.2%), however, is the slowest for any county in the UK (53.6%). The county's overall employment rate is higher than the national figure. However, this countywide figure masks pockets of high levels of worklessness and incapacity benefit claims. In addition the average wage in the county is 10% less than for England.

Key employment sectors include manufacturing, tourism, retail and the public sector. A large proportion of the county's employment is concentrated in a relatively small number of business, including the British Nuclear Fuels site at Sellafield, the BAe Systems shipyard in Barrow and the Center Parcs holiday village in the Eden Valley. Major job losses at any of these employers would have a significant impact of the socio-economic profile of the county as a whole.

DRAFT

## SECTION THREE

### Strategic Approach

1. This section will outline the broad approach taken to developing the agreement, including the way partners have engaged in the process. It will also cover the approach taken to ensuring that issues such as sustainability and equity have been considered in the agreement.

DRAFT

Diagram One: Relationships Between the LAA, Partners' Strategies and Plans

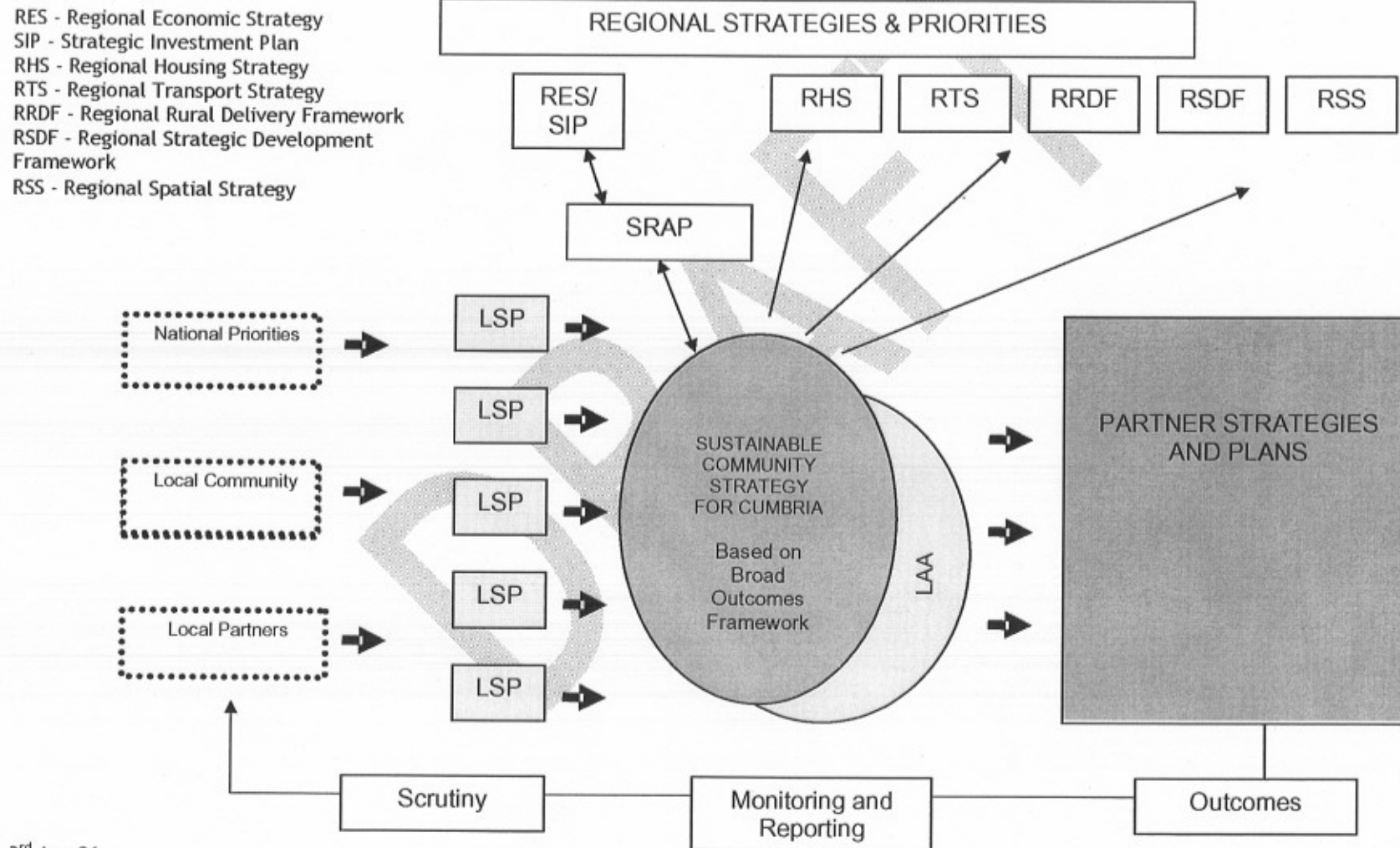
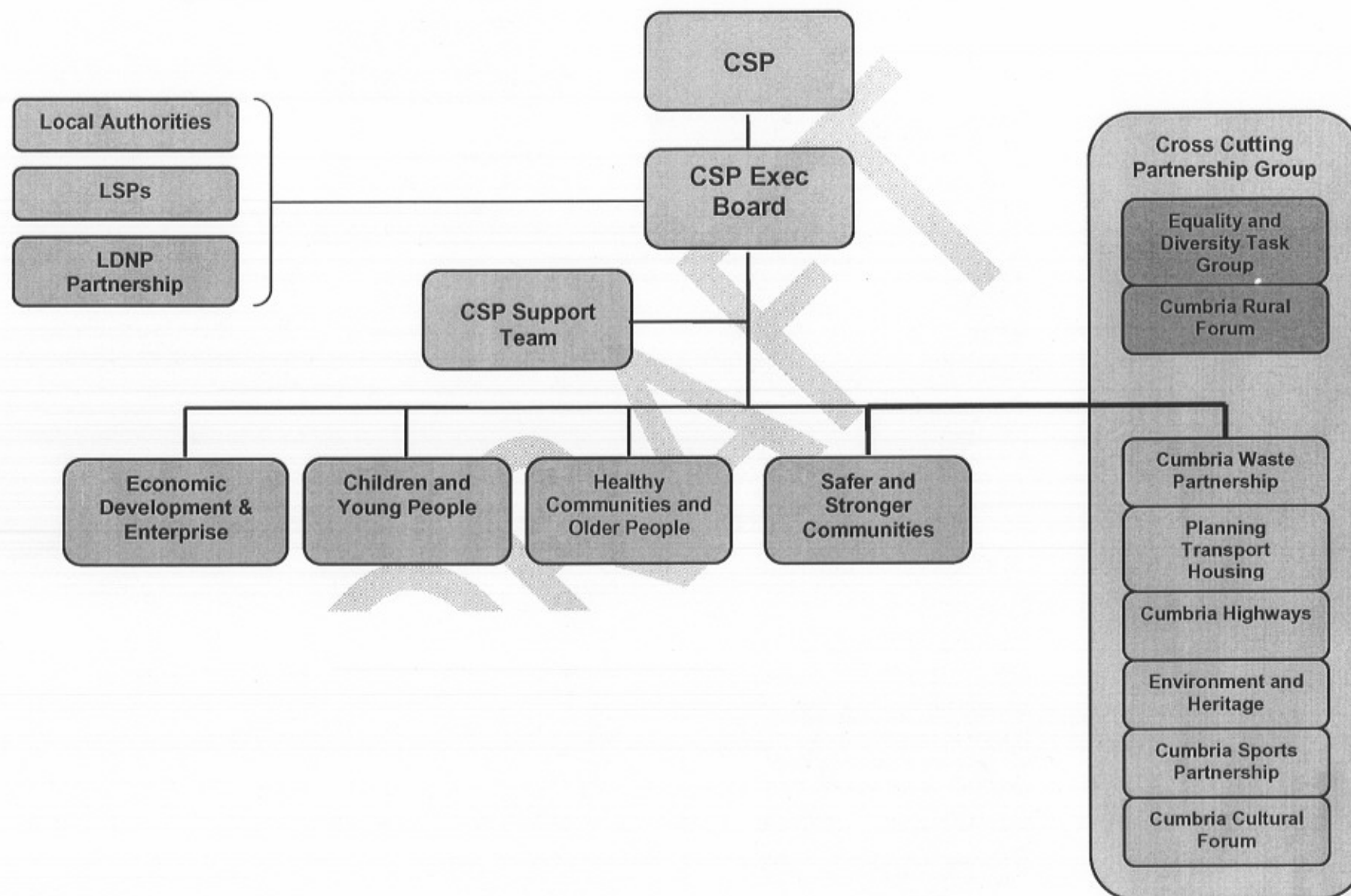




Diagram Two: Thematic Partnerships of the Cumbria Strategic Partnership



**Diagram Three: Alignment of LSP task groups with Thematic Partnerships**

	Cross Cutting Partnership Group						
CSP Thematic Partnerships	Children and Young People's Board	Healthier Communities and Older People	Safer and Stronger Communities	Economic Development and Enterprise	Cumbria Waste Partnership		
					Planning, Transport and Housing		
					Cumbria Highways		
					Environment and Heritage		
					Cumbria Cultural Forum		
					Cumbria Sport Partnership		
					Equality and Diversity Task Group		
					Cumbria Rural Forum		
Furness Partnership	No specific Task Group	Health Task Group	CDRP	Employment Task Group	Housing Task Group	Environment	
				Regeneration Task Group		Children & Young People	
Carlisle LSP	CYPB Priority Group	HCOP Priority Group	SSCF/CDRP Priority Group	Economic Priority Group	Cross Cutting Groups Rural Issues, Environment, Carlisle Renaissance		
Eden LSP	Young People- (incl activities for teenagers)	Health	Carlisle and Eden CDRP	Eden Economic Forum	Eden SPAA		
			Eden CVS		Environment		
					Equit. access to services incl affordable housing		
					Eden Cultural Forum		
West Cumbria Strategic Partnership	CYPB	HCOP	Stronger	Safer	ED&E	Living Environment (inc Cleaner Safer Greener)	
South Lakeland LSP	CYPB	Health and Well Being	CDRP/ Community Involvement Group/ Environment Group		Job Skills	2 Task Groups Affordable Housing, Accessible Transport	2 Task Groups Quality Environment, Culture

3<sup>rd</sup> Aug 06  
HLB & CK

3<sup>rd</sup> Aug 06  
HLB & CK

## SECTION FOUR

### Key Issues

1. This section will outline key issues, block-by-block, highlighting particular cross-cutting themes (in development) An example of text is provided here from the Economic Development and Enterprise Block

### Key issues: Economic Development and Enterprise

#### *Cumbria - A county of contrasts and challenges*

Cumbria faces a number of challenges to improve both economic and social conditions in the County. Steps have been taken over the past 5 years, however, to help create the right environment to increase investment and economic growth. These include the creation of urban and rural regeneration companies and ensuring a full recognition by Government of the need for concerted action to deal with the restructuring of the nuclear industry in West Cumbria. Inroads have been made but much remains to be done and the development of Cumbria's Local Area Agreement provides an opportunity for an extension to the strong partnership working that is undertaken to secure Cumbria's economic revival.

Cumbria has been described as a County of contrasts (Sustainable Cumbria 2004-2024) and this is well demonstrated in the juxtaposition of outstanding landscape, at the heart of which is the Lake District National Park, alongside areas of major manufacturing and the nuclear facility of Sellafield. This contrast further applies to its economy. Within its boundaries, there are some local areas that are amongst the most deprived in the UK alongside others where incomes are above average. Some places exhibit high levels of unemployment while others have strikingly low numbers of unemployed. The overall picture is, however, of a county that is now the worst performing sub-region of the UK in terms of Gross Value Added. Across Cumbria there are many families that survive on very low incomes and in the industrial communities in Furness and West Cumbria worklessness and hidden unemployment are markedly severe.

It is on this canvas that major and lasting change must be achieved. It will not be easily delivered and the trends of the last ten years, which have seen the economy of the County deteriorate sharply relative to the rest of the country, will need to be arrested.

Job losses and closures have affected the manufacturing sector in particular where levels of GVA per worker are relatively high. There has been employment growth in other activities between 1999 and 2003 but new jobs have tended to be in low GVA sectors. The most prominent growth has occurred in retailing, hotels, restaurants and public sector services. The succession of closures in of businesses in the



manufacturing sector, however, means that industrial employment in West Cumbria and Furness is even more dependent on the nuclear sector than five years ago and employment in financial and business services remains under-represented. In short, there has been insufficient strength elsewhere in the economy to compensate for the continued losses in manufacturing industry and hence the continuing and dramatic decline in the relative wealth.

There are 24 specific localities (super output areas) that are in the ten percent most deprived areas and within that category 7 areas are in the worst 3% across the whole of England and Wales. Deprivation is also a feature of rural areas but, with the exception of poor access to services and transport difficulties, the scale of the problem is often masked by statistical averages. Rural deprivation tends to focus at the level of individual households that depend on low wage employment and experience long hours associated with multi-jobbing.

Recent surveys continue to show the concerns of employers about basic skill levels in the labour market and difficulties in recruiting staff in specialist fields such as engineering and other appropriate technical qualifications. There is a reported weakness too in the value adding sectors in financial and professional services.

## Appendix 1: Outcomes and indicators (subject to change - further development ongoing)

### Outcomes, indicators and targets (mandatory and non mandatory)

BLOCK - CHILDREN AND YOUNG PEOPLE							
Mandatory outcomes	Sub outcomes	Mandatory Indicators	Baselines 2006/07 (Unless otherwise stated)	Targets 2007/08 (including any stretch targets, and their annual unstretched targets)	Targets 2008/09 (including any stretch targets, and their annual unstretched targets)	Targets 2009/10 (including any stretch targets, and their annual unstretched targets)	Lead partner
Be Healthy	<ul style="list-style-type: none"> <li>Promote healthy living within an active lifestyle</li> </ul>	<p>Improve oral health by reducing incidence of tooth decay.</p> <p>Reduce the rates of childhood obesity.</p> <p>Increase the % of schools achieving healthy school standards in wards of deprivation.</p> <p>Increase the</p>	Information to be taken from PSA				



	<ul style="list-style-type: none"> <li>Support young people in making informed choices about contraception and parenthood</li> <li>Modal share in travel to school</li> </ul>	<p>rate of breast-feeding.</p> <p>Reduction in the under 18 conception rate</p> <p><u>Mandatory where School Travel Advisors Grant is received</u></p> <p>Modal share in travel to school</p>					
Enjoy and Achieve	<ul style="list-style-type: none"> <li>Improve access to support for groups of children at risk of social exclusion and those in the most disadvantaged areas</li> </ul>	<p>Reduce incidence of anti-social behaviour.</p> <p>Increase access to opportunities in sport, leisure and culture.</p> <p>NEET into EET for key groups including LLD.</p> <p>Housing for young people and families.</p> <p>Reduce % of</p>					

	<ul style="list-style-type: none"> <li>Raise standards in English, maths, and science in secondary education so that, by 2008, in all schools located in the districts in receipt of NRF, at least 50% of pupils achieve level five or above in each of English, maths and science</li> </ul>	<p>low-income families in areas of deprivation.</p> <p>Increase take up of correct benefits and tax credits.</p> <p><u>Mandatory for areas in receipt of Neighbourhood Renewal Funding</u></p> <p>By 2008 all schools located in Local Authority Districts in receipt of NRF to ensure that at least 50% of pupils achieve level five or above in each of English, maths and science.</p>					
Achieve economic well-being	<ul style="list-style-type: none"> <li>Increase post-16 achievement measured by a decrease in NEET</li> </ul>	<p><u>Mandatory where Connexions funding is received</u></p> <p>Percentage of</p>					

	<ul style="list-style-type: none"> <li>• Improve access to accommodation for young people making the transition to adulthood</li> </ul>	16-18 year olds not in education, employment or training					
--	---	--	--	--	--	--	--



BLOCK - CHILDREN AND YOUNG PEOPLE							
Other outcomes	Sub outcomes	Other Indicators	Baselines 2006/07 (Unless otherwise stated)	Targets 2007/08 (including stretch targets, and their annual unstretched targets)	Targets 2008/09 (including stretch targets, and their annual unstretched targets)	Targets 2009/10 (including stretch targets, and their annual unstretched targets)	Lead partner
Stay Safe	<ul style="list-style-type: none"> <li>Work more closely together to strengthen safeguarding arrangements for vulnerable children and young people and their families</li> <li>Reduce bullying</li> </ul>	<p>Increase number of parents in drug treatment.</p> <p>Increase reported rates of domestic violence.</p> <p>Increase access to support services for families experiencing domestic abuse.</p> <p>Improve access to treatment for parents with mental health problems.</p> <p>Increase % of reported incidence which stopped</p>					

		following effective intervention (measured by survey)					
		100% of schools with a policy/					
Make a Positive Contribution	<ul style="list-style-type: none"> <li>Support young people in making a positive commitment to society</li> </ul>	Number of young people involved in the design and delivery of services by need, group and type.  Reduce levels of offending.					

*Proposals for 'stretch' targets are being developed*

**Funding Stream information Children and Young People Block**

*Funding streams to be pooled centrally*

Funding streams	Allocation		
	07/08	08/09	09/10
Children's Services Grant Key Stage 3 - Behaviour and Attendance Key Stage 3 - Central Co-Ordination Primary Strategy Central Co-Ordination			

School Travel Advisers School Development Grant (LEA element only) As per guidance. The CYPSPB need to discuss how the pooling will work in relation to the LAA priorities and made decision on optional pooling			
---	--	--	--

**Enabling measures for Children and Young People Block**

Agreed enabling measures	
Enabling measures under discussion and the adjustment to targets to be made should they be agreed	

BLOCK - Healthier Communities and Older People							
Mandatory outcomes	Sub outcomes	Mandatory Indicators	Baselines 2006/07 (Unless otherwise stated)	Targets 2007/08 (including stretch targets, and their annual unstretched targets)	Targets 2008/09(including stretch targets, and their annual unstretched targets)	Targets 2009/10 (including stretch targets, and their annual unstretched targets)	Lead partner
Improved Health and reduced health inequalities	<ul style="list-style-type: none"> <li>Alcohol Reduction</li> <li>Improved Mental Health / Mental Well-being</li> <li>Sexual Health</li> <li>Drug</li> </ul>	<p><u>Mandatory Indicators</u> Spearhead Areas: Reduce health inequalities between the local authority area and the England population by narrowing the gap in all-age, all-cause mortality</p> <p><u>All other areas (optional for Spearhead Areas) -</u> reduce health inequalities within the local area, by narrowing the gap in all-age, all-cause mortality</p>					

	Misuse						
Reduce premature mortality rates and reduce inequalities in premature mortality rates between wards/neighbourhoods with a particular focus on reducing the risk factors for heart disease, stroke and related diseases (CVD) (smoking, diet and physical activity)		<u>Mandatory for areas in receipt of NRF</u>  Reduce premature mortality rates from heart disease and stroke and related diseases so that the absolute gap between the national rate and the rate for the district is reduced by [x]% by 2010 [x to be agreed as part of the contribution to the reduction in the gap between the Spearhead Group and the England average (national PSA target)]					
		Reduce the gap in premature mortality rates between the most deprived 20% of wards/neighbourhoods and the least deprived 20% of wards/neighbourhoods with a particular focus on reducing the gap in smoking prevalence in those areas					

		Reduce the gap in premature mortality rates between the most deprived 20% of wards/neighbourhoods and the least deprived 20% of wards/neighbourhoods with a particular focus on reducing the gap in smoking prevalence in those areas					

DRAFT

- Smoking reduction
- Oral health
- Reverse upward trend towards obesity
- Improved / longer breastfeeding rates
- Increase in take up of sporting activities / exercise
- Number of individuals who participate in active sport
- Number of individuals from priority groups who engage in moderate intensity level sport
- Number of adults participating

<p>The outcomes framework for Supporting People is being developed within the Supporting People Strategy by ODPM and will be ready in the early summer</p>	<p>In moderate intensity sport and physical activity</p> <ul style="list-style-type: none"> <li>• Reduce numbers killed and seriously injured on roads</li> <li>• Reduce accidents in the workplace</li> <li>• Focus on reducing numbers of suicides in target areas / groups</li> </ul>	<p>To be developed alongside the outcomes</p>					
--	--	---	--	--	--	--	--

BLOCK - Healthier Communities and Older People							
Other outcomes	Sub outcomes	Other Indicators	Baselines 2006/07 (Unless otherwise stated)	Targets 2007/08 (including stretch targets, and their annual	Targets 2008/09 (including stretch targets, and their annual unstretched targets)	Targets 2009/10 (including stretch targets, and their annual	Lead partner



				unstretched targets)		unstretched targets)	
Improve the Quality of Life for people in Cumbria	<ul style="list-style-type: none"> <li>• Advice and information - access issues</li> <li>• Falls prevention</li> <li>• Affordable warmth</li> <li>• Positive contributions - volunteering/pr e-retirement courses</li> </ul>						
Improve Well Being, Choice and Control for People in Cumbria	<ul style="list-style-type: none"> <li>• Access to leisure facilities</li> <li>• Better palliative/terminal care</li> <li>• Maximising income for vulnerable groups, e.g. those with long term conditions</li> <li>• Providing supported housing - perhaps increase ability of those with disabilities to remain in own accommodation</li> </ul>						

Funding Stream information Healthier Communities and Older People Block

*Funding streams to be pooled centrally*

Funding stream	Allocation		
	07/08	08/09	09/10
Disabled Facilities Grant Supporting People			

Enabling measures for Healthier Communities and Older People Block

Agreed enabling measures	
Enabling measures under discussion and the adjustment to targets to be made should they be agreed	

DRAFT

BLOCK - ECONOMIC DEVELOPMENT							
Mandatory outcomes	Sub outcomes	Mandatory Indicators	Baselines 2006/07 (Unless otherwise stated)	Targets 2007/08 (including stretch targets, and their annual unstretched targets)	Targets 2008/09 (including stretch targets, and their annual unstretched targets)	Targets 2009/10 (including stretch targets, and their annual unstretched targets)	Lead partner
Increase Employment	For those living in the wards with the worst labour market position that are also located within the districts in receipt of NRF, significantly improve their overall employment rate and reduce the difference between their employment rate and the overall employment rate for England.	<u>Mandatory for areas in receipt of NRF</u> An improvement by 2007/8 of at least one percentage point in the overall employment rate for those living in the Local Authority wards with the worst labour market position that are also located within the Local Authority District in receipt of NRF					

		A reduction by 2007-8 of at least one percentage point of the difference between the overall employment rate for Great Britain and the employment rate of those living in the local authority wards with the worst labour market position that are also located within Local Authority Districts in receipt of NRF					
Increase Enterprise		<p><u>Mandatory for areas in receipt of LEGI</u></p> <p>Increase in total entrepreneurial activity among the population in deprived areas - specific indicators to be agreed in negotiations</p>	No areas in Cumbria have LEGI funding at time of submission.				
Increased Investment		<u>Mandatory for areas in receipt</u>	No areas in Cumbria have				

		<u>of LEGI</u>  Attract appropriate inward investment and franchising into deprived areas, making use of local labour resources - specific indicators to be agreed in negotiations	LEGI funding at time of submission.				
Increased Competition		<u>Mandatory for areas in receipt of LEGI</u>  Support the sustainable growth, and reduce the unnecessary failure, of locally owned businesses in deprived areas. Indicators to be agreed in negotiations					
Increase Innovation		<u>Mandatory for areas in receipt of LEGI</u>  Increase in total entrepreneurial	No areas in Cumbria have LEGI funding at time of submission.				

		activity among activity among the population in deprived areas - specific indicators to be agreed in negotiations					
--	--	--	--	--	--	--	--

Non Mandatory outcomes	Sub outcomes	Non Mandatory Indicators	Baselines 2006/07 (Unless otherwise stated)	Targets 2007/08 (including stretch targets, and their annual unstretched targets)	Targets 2008/09 (including stretch targets, and their annual unstretched targets)	Targets 2009/10 (including stretch targets, and their annual unstretched targets)	Lead partner
Increased employment and economic activity and better paid employment opportunities	(i) Increase the employment rate in Cumbria (Welfare to Work Green Paper - Jan 2006 shows Government target of 80% in employment by 2020).	(a) Increase the number of people moving from Incapacity Benefit into employment.  (b) Reduction in the number of long-term claimants of Job Seekers Allowance.  Baseline 34.7% 2005-2006  (c) Reduction in the number of					

Improved	(ii) Support for disadvantaged groups to enter the workforce.	<p>young people aged 16-18 who are not in education employment or training.</p> <p>(a) Reduction in the number of lone parents not in employment</p> <p>(b) Reduction in the number of disadvantaged groups not in employment.</p> <p>Disadvantaged groups are:</p> <ul style="list-style-type: none"> <li>• Refugees</li> <li>• People without accommodation</li> <li>• Ex offenders</li> <li>• Misusers of drugs and/or alcohol</li> </ul> <p>(c) Increase in the number of people with a disability (either physical or mental) gaining employment.</p>					
----------	---	--	--	--	--	--	--

skills to match current and future economic needs	<p>(i) Create a culture of lifelong learning and improve the skill levels and productivity of the Cumbrian population.</p> <p>(ii) Improved skill levels to enable development of Cumbrian businesses.</p>	<p>(a) Number of adults gaining a Skills For Life qualification.</p> <p>(b) Number of people undertaking taught learning programmes</p> <p>(c) Number of people undertaking non-taught learning programmes.</p> <p>(d) Number of adults obtaining a first Level 2 qualification.</p> <p>(a) Number of businesses reporting skills gaps.</p> <p>(b) Number of businesses reporting employees undertaking training.</p> <p>Or</p> <p><i>Number of businesses</i></p>					
---	--	--	--	--	--	--	--



Increase enterprise activity throughout Cumbria	(i) Increasing enterprise	<p><i>delivering training.</i></p> <p>(c) Number of businesses reporting managers undertaking training.</p> <p>(d) Increase the number of young people completing Modern Apprenticeship Frameworks.</p> <p>(e) Increase the proportion of the workforce with a Level 4 of higher qualification.</p> <p>(a) Number of new business start ups.</p> <p>(b) Business density per 10,000 of the population.</p>					
---	---------------------------	--	--	--	--	--	--

Improved economic infrastructure	(ii) Increasing competition	<p>(c) Increase in the number of people self employed.</p> <p>(d) Increase in the number of Social Enterprises.</p> <p>(a) Number of businesses assisted to improve their performance.</p>					
	(i) Increased number of high quality employment sites in suitable locations.	<p>(a) Ha of serviced land available for sale or lease.</p> <p>(b) Ha of serviced land leased or sold.</p> <p>(c) Sq m of units constructed.</p> <p>(d) Sq m of units taken up.</p>					
	(ii) Land reclaimed for development.	(a) Area of land reclaimed for development.					
	(iii)						

	Improvements to the Rights of Way Network	(a) Km of cycleway/footpath (b)BVPIs					
	(iv) Increase in the use of Broadband in Cumbria.	(a) % of businesses utilising broadband technology					

*Proposals for 'stretch targets' are being developed.*

Funding Stream information Economic Development and Enterprise Block

*Funding streams to be pooled centrally*

Funding stream	Allocation		
	07/08	08/09	09/10

Enabling measures for Economic Development and Enterprise Block

Agreed enabling measures	
Enabling measures under discussion and the adjustment to targets to be made should they be agreed	

BLOCK - SAFER AND STRONGER COMMUNITIES							
Mandatory outcomes	Sub outcome	Mandatory Indicators	Baselines 2006/07 (Unless otherwise stated)	Targets 2007/08 (including stretch targets, and their annual unstretched targets)	Targets 2008/09 (including stretch targets, and their annual unstretched targets)	Targets 2009/10 (including stretch targets, and their annual unstretched targets)	Lead partners
Reduce Crime  Reduce overall crime in line with local Crime and Disorder Reduction Partnership targets and narrow the gap between the worst performing wards/neighbourhoods and other areas across the district		<b><u>Mandatory Indicators</u></b> Reduction in overall British Crime Survey comparator recorded crime. Targets must be those as agreed between crime and drugs partnerships <sup>1</sup> and GOs to support delivery of Home Office PSA1. A County level target will need to reflect the targets of the crime and drugs partnerships, and any aggregation will need to be agreed with the GO.					
		Reduce the proportion of adult and young offenders, and prolific and other priority offenders who re-offend.					

<sup>1</sup> The term 'crime and drugs partnerships' refer to all local arrangement covering the roles of Crime and Disorder Partnerships (CDRPs) and Drug Action Teams (DATs). CDRPs and DATs should either be merged or have close working relationships.

		<p><u>Mandatory for areas in receipt of NRF</u></p> <p>Reduction in overall British Crime Survey comparator recorded crime. Targets must be those as agreed between crime and drugs partnerships and GOs to support delivery of Home Office PSA1. A County level target will need to reflect the targets of the crime and drugs partnerships, and any aggregation will need to be agreed with the GO.</p> <p>Narrowing the gap target for Barrow. Narrowing the gap target for Allerdale. Narrowing the gap target for Copeland.</p> <p>Reduce year on year the number of first time entrants to the Youth Justice System.</p>					
Reassure the public, reducing the fear of crime		<p>Increase the rate of respondents who report feeling fairly safe or very safe in their own area during the day.</p> <p>Increase the rate of</p>					

		<p>respondents who report feeling fairly safe or very safe in their own area after dark.</p> <p>Reduce the fear of being a victim of crime.</p> <p>Increase confidence in the Criminal Justice System.</p>					
Reduce the harm caused by illegal drugs		<p><b><u>Mandatory Indicator</u></b></p> <p>Reduce public perception of local drug dealing and drug use as a problem / Reduce the percentage of respondents who perceive high levels of drug use and dealing in their area.</p> <p>Reduce the number of Class A Drug supply offences.</p> <p>Increase the number of drug misusing offenders directed into treatment through the Drugs Intervention Programme.</p> <p>Reduce the number of illegal underage sales at both on and off licensed premises.</p> <p>Increase the proportion of those in drug</p>					

		treatment or leaving treatment who are a) in employment or training b) in suitable accommodation.					
Build Respect in communities and reduce anti-social behaviour		<b><u>Mandatory Indicators</u></b>  (The following indicators should draw on data in the Local Government User Satisfaction Survey)					
		Increase in percentage of people who feel informed about what is being done to tackle anti-social behaviour in their local area	Establish baseline in 06/07				
		Increased percentage of people who feel that parents in their local area are made to take responsibility for the behaviour of their children					
		Increased percentage of people who feel that people in their area treat them with respect and consideration					

		Reduce people's perceptions of ASB (using the 7 issues stated in the Survey)					
Empower local people to have a greater choice and influence over local decision making and a greater role in public service delivery		<b><u>Mandatory Indicators</u></b>	42% (05/06)				
		Percentage of residents who feel they can influence decisions affecting their local area					
		Percentage of people who feel that their local area is a place where people from different backgrounds get on well together.	57% (2004)				
		An increase in the number of people recorded as or reporting that they have engaged in formal volunteering on an average of at least two hours per week over the past year.		Establish baseline yr 1			
		Growth of the local voluntary and community sector.	To be established by Voluntary Sector.				



		<p>Increase in the proportion of public services delivered by the Parish and Voluntary Sector.</p> <p>Increase in number of parishes with active parish plans.</p> <p>Increase in number of Quality Parishes.</p>	To be established by CALC				
		Build capacity of BME communities.	To be established by Cumbria Multi Cultural Service.				
		Number of young people who feel engaged in democratic processes.	To be established by children & young people block.				
		Increase the percentage of the population in priority Localities engaged in adult continuing learning.					
Improved quality of life for people in the most disadvantaged neighbourhoods ; service providers more responsive to neighbourhood needs; and improved		<p><u>Mandatory where SSCF neighbourhood element and neighbourhood management pathfinders funding is received</u></p> <p>Percentage of residents (in areas receiving this funding) reporting an increase in satisfaction with their</p>					

service delivery		<p>neighbourhoods.</p> <p><b>Other indicators</b></p> <p>Percentage of residents satisfied with the delivery of local services and believing that service providers are more responsive to their needs.</p> <p>Percentage of residents who feel that their local area is a place where people from different backgrounds can get on well together.</p>					
Increase domestic fire safety and reduce arson		<p><b>Mandatory Indicator where Home Fire Risk Check and Fire Prevention Grant is received.</b></p> <p><u>Indicators at neighbourhood and priority group level to be agreed in negotiation</u></p> <p>Reduce the rate of fire related deaths.</p> <p>Reduce the rate of fire related injuries.</p> <p>Reduce the rate of deliberate fires.</p>					

BLOCK - SAFER AND STRONGER COMMUNITIES							
Other outcomes	Sub outcomes	Other Indicators	Baselines 2006/07 (Unless otherwise stated)	Targets 2007/08 (including stretch targets, and their annual unstretched targets)	Targets 2008/09 (including stretch targets, and their annual unstretched targets)	Targets 2009/10 (including stretch targets, and their annual unstretched targets)	Lead partner
Improve Services for Domestic Violence Victims		In development.					
Improving Road Safety		<p>Reducing the numbers of Killed &amp; Seriously Injured on Cumbria Roads.</p> <p>Building Respect amongst road users by reducing speed.</p> <p>Reduction in casualties related to disadvantaged areas.</p>					

*Proposals for 'stretch' targets are being developed.*

#### Funding Stream information Safer and Stronger Communities Block

*Funding streams to be pooled centrally*

Funding stream	Allocation		
	07/08	08/09	09/10

Anti-Social Behaviour Neighbourhood Element Aggregates Levy Sustainability  Fund Home Fire Risk Check Initiative			
--	--	--	--

Enabling measures

Agreed enabling measures	
Enabling measures under discussion and the adjustment to targets to be made should they be agreed	

BLOCK - LIVEABILITY							
Mandatory outcomes	Sub outcome	Mandatory Indicators	Baselines 2006/07 (Unless otherwise stated)	Targets 2007/08 (including stretch targets, and their annual unstretched targets)	Targets 2008/09 (including stretch targets, and their annual unstretched targets)	Targets 2009/10 (including stretch targets, and their annual unstretched targets)	Lead partners
Cleaner, greener and safer public spaces		<u>Mandatory where SSCF cleaner, safer, greener element is received</u>  Environmental quality, as measured by BVPI 199 and 89 in combination, which measure perceptions of cleanliness.					
		Quality of surroundings - increase in number of green flag award parks and green space and public satisfaction (BV119e)					
		An increase in the percentage of abandoned vehicles removed within 24 hours from the point where the local authority is legally entitled to remove the vehicle (BVPI 1218b)					
Reduced waste to landfill and increase recycling		<u>Mandatory where Waste and Performance Efficiency Grant is included</u>					

		Reduction in the percentage of municipal waste landfilled					
		Increase in the percentage of municipal waste recycled					
Improve the quality of the local environment by reducing the gap in aspects of liveability between the worst wards/neighbourhoods and the district as a whole, with a particular focus on reducing levels of litter and detritus		<u>Mandatory where NRF is received</u>  Reduction by 2008 in levels of litter and detritus using BV199 at district level					

As part of an overall housing strategy for the district, improve housing conditions within the most deprived neighbourhoods/wards, with a particular focus on ensuring that all social housing is made decent by 2010		<u>Mandatory Indicators where NRF is received</u>  The two year combined sample (2005/6 to 2006/7) from the continuous English Household Condition Survey (EHCS) reporting in 2007 confirms that the reduction in the number of non-decent social sector dwellings is more than 50% of the total reduction in the number of non-decent social sector dwellings since 2001.					
		The two year combined sample (2007/8 to 2008/9) from the continuous EHCS reporting in 2009 confirms that the reduction in the number of non-decent social sector dwellings is more than 50% of the total reduction in the number of non-decent social sector dwellings since 2001.					

BLOCK - LIVEABILITY							
Other outcomes	Sub outcomes	Other Indicators	Baselines 2006/07 (Unless otherwise stated)	Targets 2007/08 (including stretch targets, and their annual unstretched targets)	Targets 2008/09 (including stretch targets, and their annual unstretched targets)	Targets 2009/10 (including stretch targets, and their annual unstretched targets)	Lead partner
Improve access to the countryside	<ul style="list-style-type: none"> <li>Improve ease of use of public rights of way</li> <li>Improve community involvement in countryside access</li> </ul>						
A better quality of life through participation in cultural activity	<ul style="list-style-type: none"> <li>Number of people using local cultural facilities</li> </ul>						
Improve condition of roads and structures	<ul style="list-style-type: none"> <li>Reduction in roads requiring maintenance</li> <li>Reduction of footways requiring maintenance</li> </ul>						
Reduce the impact of waste on the environment	<ul style="list-style-type: none"> <li>Increase waste being recycled and composted</li> </ul>						



Improved accessibility	<ul style="list-style-type: none"> <li>• Access to jobs and training</li> <li>• Access to health services</li> <li>• Access to education</li> <li>• Access to cultural and recreational opportunities</li> </ul>						
Produce balanced housing markets	<ul style="list-style-type: none"> <li>• Increase affordable housing</li> <li>• Deliver Housing Market Renewal</li> <li>• Develop Home Zones</li> </ul>						
Create decent homes	<ul style="list-style-type: none"> <li>• Increase homes achieving the Decent Homes Standards</li> <li>• Reduce number of empty properties</li> <li>• Housing the homeless</li> </ul>						

Funding Stream information Liveability Block

*Funding streams to be pooled centrally*

Funding stream	Allocation		
	07/08	08/09	09/10
Cleaner, Safer, Greener Element Waste Performance and Efficiency Grant			

Enabling measures

Agreed enabling measures	
Enabling measures under discussion and the adjustment to targets to be made should they be agreed	

## Appendix 2: Stretch Targets (template included - targets in development)

### REWARD ELEMENT TEMPLATE (GONW)

Reward Element - Target [insert target number]

*This would be from authorities' internal numbering system, should you choose to adopt one*

[Insert target heading]

*In LAA terms, this equates to the overarching theme (e.g. reducing hospital admissions, improving road safety)*

Indicator by which performance will be measured

[Insert indicator description, including data source]

Current performance ([insert period of measurement])

[Insert current performance figures]

*This is the "baseline", and should be based on the latest audited figures*

Performance at the end of the period of the Local Area Agreement ([insert period of measurement])

Performance expected without the Reward Element

[Insert "without reward" figure]

*This will be the figure for this indicator at the end of the LAA period, as previously declared in any national or local plan, e.g. a national PSA, or a local corporate plan, delivery plan or business plan*

**Performance target with the Reward Element**

[Insert "with reward" figure]

*This is the higher figure areas expect to have achieved for this indicator by the end of the LAA as a result of pump-priming, new ways of working, focussed resources etc.*

**Enhancement in performance with the Reward Element**

[Insert stretch figure]

*This is the difference between the "with reward" figure and the "without reward", i.e. the extra performance you are undertaking to deliver, over and above what you would have done anyway*

**Allocation of Performance Reward Grant**

[Insert indication of how much PRG is to be proportioned to this target and between indicators if appropriate]

**Notes**

[Insert any necessary notes or clarification relating to this target]

### Appendix 3: Enabling Measures - business cases (template included)

#### ENABLING MEASURE REQUEST TEMPLATE (GONW)

Title of Enabling Measure Request:		
LAA area:		
<b>LA Contact officer details</b> Name: Telephone: Email:	<b>GO Contact officer details</b> Name: Telephone: Email:	<b>Government Department contact submitted to</b> Name: Telephone: Email:
LAA Block F&F request relates to: (please delete as appropriate)		
CYP / SSC / HCOP / EDE or Applies to all		
LAA outcome(s) request relates to:		
Description in full of the Enabling Measure request:		
What is the constraint to achieving this outcome that the Enabling Measure would overcome? How would it do this? What are the implications of not agreeing the request?		
If the request cannot be agreed what other options may be available to resolve the issue?		
Government Department response to the request:		

#### Appendix 4: Statement of Community Involvement ( in development)

DRAFT

## Appendix 5: Partnership working and Governance arrangements (in development)

DRAFT

## Appendix 6: Performance Management Framework (in development)

DRAFT



**Appendix 7: Key funding streams aimed at “narrowing the gap”**

**(Table in development)**

DRAFT

## Appendix 8: Neighbourhood Renewal outcomes and targets

(Table in development)

DRAFT

DRAFT