



**Partnership Plan  
2012 /2013**

## **Foreword**

Carlisle and Eden CDRP has and continues to be a successful catalyst for multi agency working to address crime and disorder in North Cumbria. Since its inception, we have worked effectively to contribute to significant and sustained falls in crime and disorder. This plan sets out how, in partnership, we will address the priorities as set out in the Strategic Assessment to ensure North Cumbria remains a safe place to live, work and Study.

2012/13 will see the removal of direct funding to CDRP's and this will bring new pressures and challenges to the Partnership. However, I am confident that Carlisle and Eden CDRP has both the strong strategic leadership and the operational knowledge, through our task groups, to meet these challenges in an effective and efficient way.

All Partners have expressed a commitment to the effective running of the Partnership and we will utilise mainstream resources effectively to continue to address crime and disorder throughout Carlisle and Eden.

**Jane Muller**  
**CDRP Chair**

# Contents

<b>Introduction</b>	<b>4</b>
<b>Background</b>	<b>4</b>
<b>Purpose of the plan</b>	<b>4</b>
<b>Developing the Plan</b>	<b>5</b>
<b>Community engagement</b>	<b>5</b>
<b>The priorities</b>	<b>5</b>
<b>Monitoring Performance and Delivery</b>	<b>6</b>
<b>Tackling the Priorities</b>	<b>7</b>
<b>Anti-social behaviour and criminal damage</b>	<b>7</b>
<b>Violent crime</b>	<b>8</b>
<b>Domestic Violence</b>	<b>9</b>
<b>Reducing Re-offending</b>	<b>10</b>
<b>Emerging Issues</b>	<b>10</b>

## **Introduction**

### **Background**

The Crime & Disorder Act 1998 placed statutory obligations on Local Authorities and the Police to act in co-operation with Health Authorities and other relevant agencies, to work together to develop and implement a strategy for tackling crime and disorder in their area.

Section 97 of the Police Reform Act 2002 amended the above act so that responsible authorities also include the Police Authority, Fire Service and Primary Care Trusts for the area. Further reforms now list the Probation Service as responsible authority and the Environment Agency and Registered Social Landlords as participatory bodies.

The Police and Justice Act 2006 made a significant number of amendments to the Crime and Disorder Act. In particular, this Act brought in the requirement for responsible authorities to produce a Partnership Plan, detailing how we will address our priorities.

Central to the development of the Partnership Plan is the annual Strategic Assessment. This document combines recorded crime data with information from a wide range of partners, including Health, local Councils and the Fire Service, to provide a detailed picture of crime, disorder and substance misuse in Carlisle and Eden. The assessment highlights the issues that are of most importance to our communities and enables the Partnership to identify emerging trends and plan tactics to tackle these issues.

The Strategic Assessment also helps to inform the Cumbria Community Safety Agreement. This document highlights County level priorities and areas that can be effectively addressed at this level and through the joining of resources.

### **Purpose of the Plan**

The CDRP Partnership Plan has been compiled to provide key stakeholders and the community with a picture of the key actions to be taken during the 2012/13 financial year to tackle crime, disorder and substance misuse. Through the Plan and associated action plans, Carlisle and Eden CDRP will, deliver action to address the priorities identified through the Strategic Assessment. It will be kept under review, both to ensure our work is effective and that our priorities continue to be relevant to local needs.

The Partnership plan offers an opportunity for all Partners to work closely towards a common aim; to maintain Carlisle and Eden as a safe place to live, work and visit.

## **Developing the Plan**

This plan is a three year strategy, based on the priorities identified in the strategic assessment. It is revised annually, in line with national requirements and to reflect changes to our communities and emerging priorities. This high level action plan sets out an ambitious but achievable work plan to reduce crime, disorder and substance misuse in Carlisle and Eden. The plan also aims to increase feelings of safety within our communities and increase confidence in partner agencies dealing with issues that communities feel are important to them.

## **Community Engagement**

The views and concerns of our communities are an essential element in the CDRP's work to tackle crime, disorder and substance misuse. In addition to information gathered from our Partners, the strategic assessment also gathered information from the British Crime Survey, and the Public Consultation Survey.

The feedback obtained from these surveys showed a great deal of overlap between the concerns and priorities of residents and those identified by the statutory agencies working as part of Carlisle and Eden Crime and Disorder Reduction Partnership.

Communicating with residents and informing them of our work and how they can highlight issues in their community is an important part of this Partnership Plan. In addition to the actions set out in this document, we will endeavour to take every opportunity to engage with our communities and publicise the work of the partnership.

## **The Priorities**

The priorities for Carlisle and Eden, as identified through the strategic assessment, are:

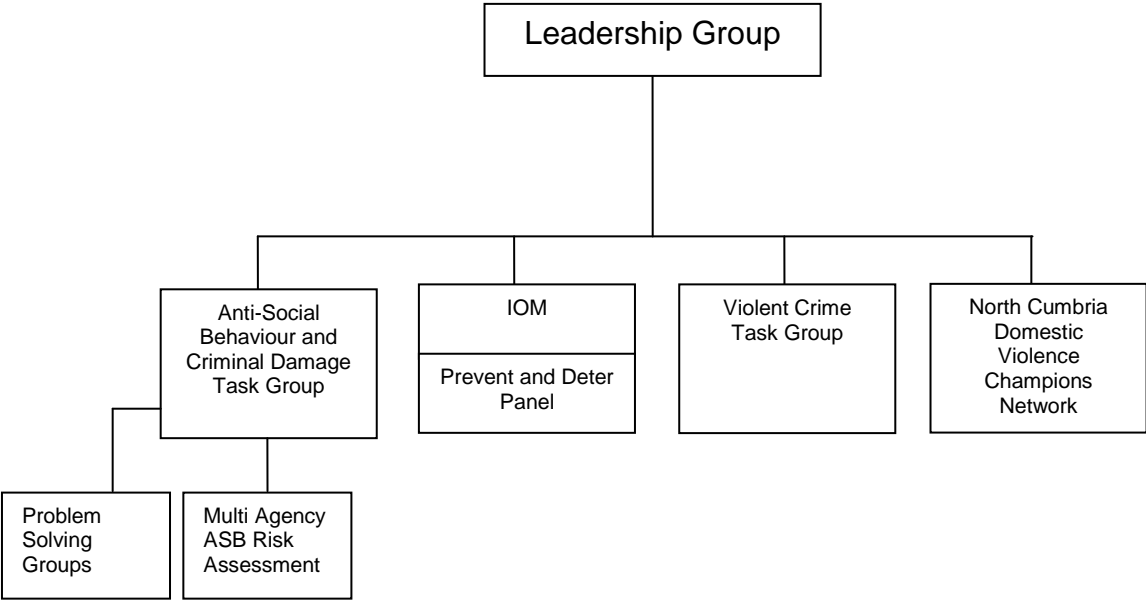
- Anti social behaviour – To incorporate criminal damage and deliberate fires
- Violent crime – To incorporate alcohol related violent crime
- Domestic violence
- Reducing re-offending

In addition to these priorities, the CDRP will respond to community priorities as and when they are identified.

**Monitoring Performance and Delivery**

The structure of the Carlisle and Eden CDRP is shown below. A range of task groups have been established to ensure our priorities are addressed appropriately and effectively. Each task group has its own action plan detailing further, how it will address key issues and priority areas.

**Carlisle and Eden Crime and Disorder Reduction Partnership delivery arrangements**



Each task group will follow an agreed process and consider projects and actions based on 3 over arching elements for each priority; prevention, education and enforcement. All tactics, actions and tasks developed from this plan will fall into one of these categories.

This plan directs activity for year 2012/13 and will be reviewed, based on an agreed performance management framework, by March 2013. Task groups will determine actions that are complete and therefore to be removed from the plan and those deemed successful and / or continuous.

## **Tackling the Priorities**

The following sections set out headline activities that the CDRP intends to deliver in order to address the Priorities as set out in the strategic assessment. Each Task Group will develop their action plans based on these activities.

In addition to the activities set out in this document, Carlisle and Eden CDRP encourages innovation from Partners. We will support new and challenging ideas to address existing and emerging issues.

### **Anti-Social Behaviour and Criminal Damage**

Anti-social behaviour and criminal damage can cover a broad range of issues that impact on others in a negative way. Although anti social behaviour and criminal damage has seen significant reductions in North Cumbria, certain types of anti-social behaviour are still identified as community concerns for residents in Carlisle and Eden.

It is important to note that incidents of anti-social behaviour are based on details given by the caller, so may depend on their perception rather than what is actually occurring. For example a group of friends meeting on a street, could be just that but can be perceived as anti-social or intimidating by someone else. Therefore it is a complex issue to tackle and interventions must include engaging with communities.

Although the number of incidents can depend on perceptions it is important to consider these calls because they add to the overall pattern of crime and disorder, especially in relation to issues that impact on people's lives and perceptions of their area.

The Carlisle and Eden Anti-Social Behaviour and Criminal Damage Task Group exists to provide a co-ordinated response to tackling anti-social behaviour and criminal damage.

#### **Aim - To reduce anti social behaviour and criminal damage throughout Carlisle and Eden**

This will be achieved through a range of detailed interventions, based on the following headline activities:

- The Partnership will fully support the Multi Agency Anti Social Behaviour Risk Assessment process and share information with partners when appropriate.
- The Partnership will continue to fully support the Neighbourhood Policing Team level Problem Solving Groups to tackle issues within communities.
- Through the appropriate use of Partner data and community intelligence, the Partnership will use intelligence led processes to target activity to address ASB, criminal damage and deliberate fires.
- The Partnership will support a range of diversionary activities for young people to enable engagement with targeted age groups, divert young people away from anti social activities and to prevent them from becoming victims of crime.
- The Partnership will support school attendance initiatives and other school projects where appropriate to reducing anti social behaviour and criminal damage.

- In order to tackle deliberate fires and arson, the Partnership will support a partnership approach to securing derelict and vacant properties and work alongside our Partners in the Fire and Rescue service to support a co-ordinated approach to address this issue.
- The Partnership will fully utilise CCTV where appropriate and ensure a co-ordinated approach to the deployment of partnership resources.
- As a Partnership, we will fully support a co-ordinated approach to issues of environment crime and fully utilise enforcement powers through Partner agencies where appropriate.
- As part of our intelligence led planning, the Partnership will work closely with Partners to implement dedicated action and campaigns in response to seasonal increases of ASB and criminal damage.
- The Partnership will support a co-ordinated approach to improving the use of 'design out crime' techniques and will work with our Partners in the Probation Pay Back Team to support the continuation of this work.
- The Partnership will fully support the Prevent and Deter panel in utilising available powers and resources to tackle known offenders of anti social behaviour, criminal damage and deliberate fire setting.

## **Violent Crime and a Safer Night Time Economy**

In addition to tackling overall violent crime, the Task group is committed to reducing alcohol related violent crime and will work closely with the night time economy to achieve this.

### **Aim – To reduce violent crime, including alcohol related violent crime in Carlisle and Eden.**

This will be achieved through a range of detailed interventions, based on the following headline activities:

- The Partnership will support a programme of multi agency visits to licensed premises to ensure they are a safe environment for staff and visitors and support appropriate enforcement action where necessary.
- In order to prevent low level disorder escalating into serious violent crime, we will support the use of targeted early interventions where appropriate.
- The Partnership, working closely with our Police and District Council Partners, will monitor, enforce and utilise designated public place orders.
- The Best Bar None Scheme has enabled Partners to engage closely with the night time economy trade, and we intend to continue to support this scheme, which has grown year on year.



- The Partnership will support Partners to deliver a programme of intelligence led, targeted test purchasing operations in order to reduce sales of alcohol to individuals under 18. In addition to this, the Partnership will deliver action to raise awareness around purchasing alcohol for under 18's.
- The Partnership will utilise existing resources to address substance misuse within the night time economy.
- As part of our intelligence led planning, the Partnership will work closely with our Partners to deliver campaigns in response to seasonal increases in alcohol related violent crime and disorder.
- The Partnership will continue to support the delivery and enhancement of Pubwatch schemes in North Cumbria.
- The Partnership will support and add value to a co-ordinated response in relation to high profile events throughout North Cumbria.
- The Partnership will fully utilise CCTV where appropriate and ensure a co-ordinated approach to the deployment of partnership resources.

## **Domestic Violence**

Domestic violence has devastating consequences for the victim, their families and the wider community. It is rarely a one off incident, and should instead be seen as a pattern of abusive and controlling behaviour through which, the abuser seeks power over their victim. Victims of domestic violence suffer on many levels, health, housing, education, and lose the freedom to live their lives how they want, and without fear.

The definition used by the Association of Chief Police Officers is:

‘Any incident of threatening behaviour, violence or abuse (psychological, physical, sexual, financial or emotional) between adults who are or have been intimate partners or family members, regardless of gender or sexuality.’

**Aim – Contribute to the delivery of the Cumbria Domestic Violence Business Plan through increasing awareness of domestic violence, responding to local issues and mainstreaming referral routes through Partner agencies.**

Carlisle and Eden CDRP acknowledges that providing effective, consistent and comprehensive service provision for domestic violence requires a multi agency approach and increased partnership working. Through working together we can increase identification of domestic violence and reduce both the proportion of repeat incidents and the impact on those experiencing domestic violence.

To achieve this, the CDRP will support the development of the North Cumbria Domestic Violence Champions Network. This network draws together the agencies who can provide prevention, protection and support services and who will be instrumental in raising awareness of domestic violence within organisations in North Cumbria.

Domestic violence Champions will be the main link between their own organisation and the Partnership regarding action to address domestic violence and will cascade information and training throughout their organisation.

### **Reducing Re-offending**

CDRPs have a responsibility to ensure that mechanisms are in place within their locality to support joint agency work to address the offending behaviour of priority individuals, known as prolific and priority offenders.

The CDRP will continue to support the Prevent and Deter Panel; a multi agency group that assesses targeted individuals, who's current behaviour signals potential for future offending. The group works together to attempt to stop this offending behaviour through education, diversionary activities and other early interventions in addition to providing the information needed for relevant court action.

Furthermore, the Partnership will support the Integrated Offender Management Group in order to contribute to a reduction in re-offending. This Group provides a co-ordinated approach to those individuals who cause excessive strains on resources within partner organisations. Following the principles of integrated offender management, the Partnership will bring together relevant parties to assess these individuals and put action in place to address their offending or problematic behaviour.

### **Emerging Issues**

In addition to the activities set out in this Partnership Plan, the CDRP are committed to addressing emerging issues that cause high levels of distress to our communities. When issues are identified, we will bring together all relevant agencies at a local level to ensure we can address issues effectively and in a timely manner.