

CHANGING ROOMS

GREEN ROOM

TOILETS

WASHROOM

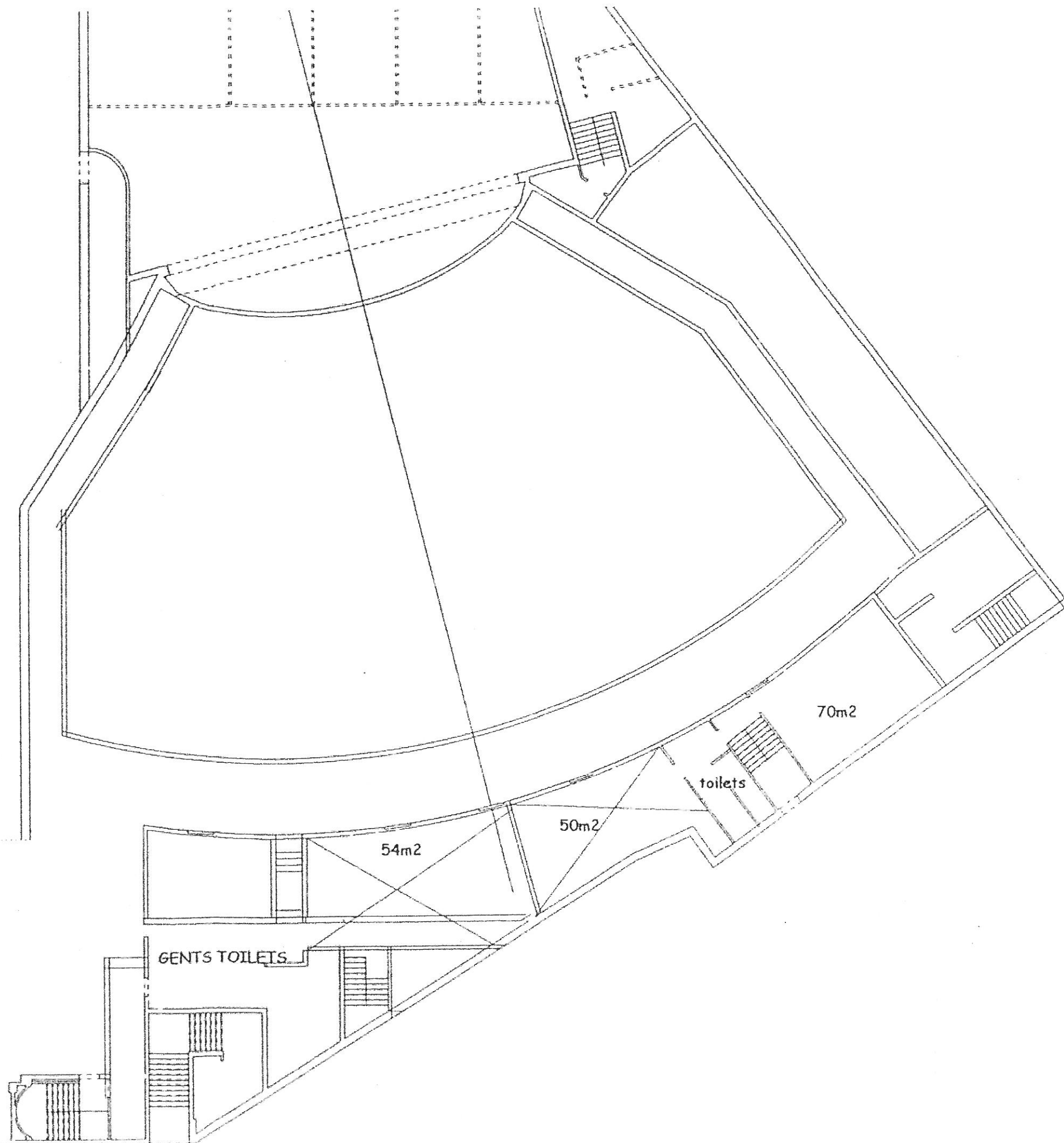
service ducts retained

basement floor level

SMALL
THEATRE

CINEMA

ARTISTS
STUDIOS
(9 DOUBLE STOREY HEIGHT)



STAGE AREA

17metres proscenium width x 10m dpth x 8.5m height

MAIN THEATRE

- 1, fixed seating, stage proscenium,
- 2, orchestra pit
- 3, small front stage with access from side stage outside curtain line
- 4, prompt position

MUSIC STUDIOS

DANCE WORKSHOP

COATS ground floor level

WORKSHOPS

RENTAL OFFICES

FOYER
ENTRANCE

BOX OFFICE

CYBERCAFE
COFFEE BAR

kiosk/shop

front stalls seating
(approximately 800 seats)

stage reinstated

organ and rising
platform reinstated

orchestra pit reinstated

gents toilets

ladies toilets

cleaners

96m²

78m²

55m²

37m²

replace and relocate
heating and ventilation
room equipment

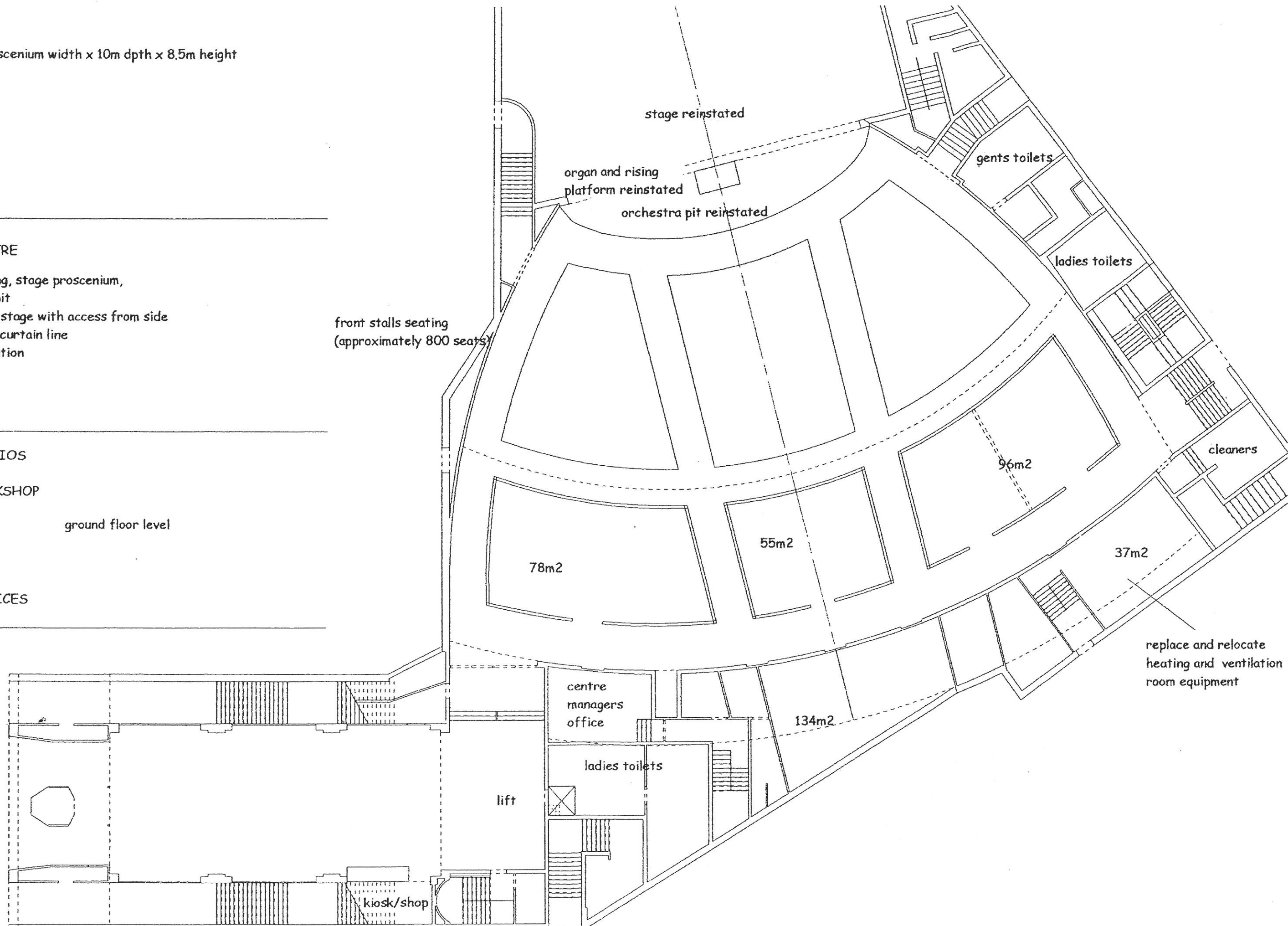
centre
managers
office

134m²

ladies toilets

lift

to gents toilets



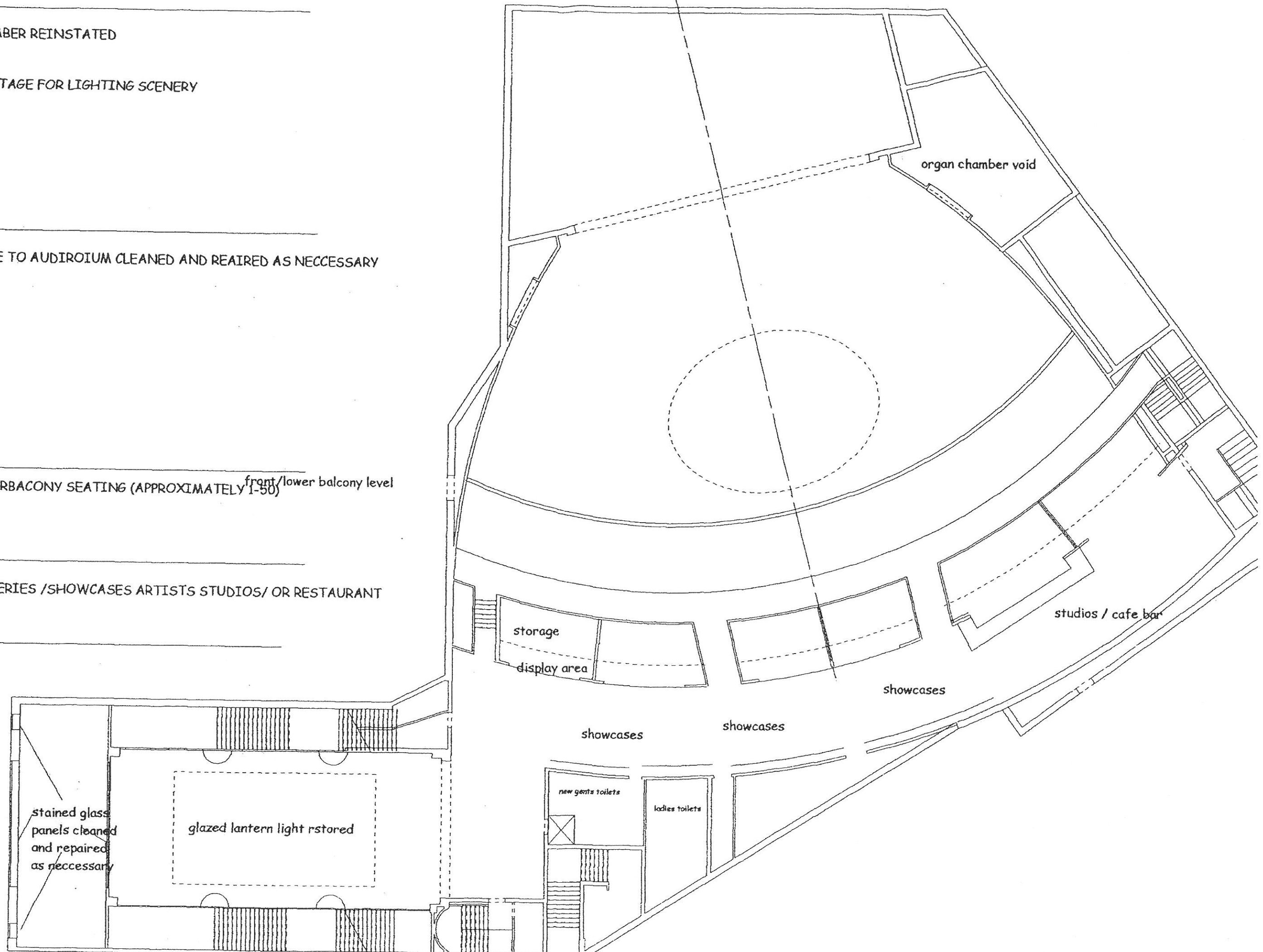
ORGAN CHAMBER REINSTATED

VOID OVER STAGE FOR LIGHTING SCENERY

GLAZED DOME TO AUDIITORIUM CLEANED AND REPAIRED AS NECESSARY

FRONT / LOWER BALCONY SEATING (APPROXIMATELY 1-50) front / lower balcony level

DISPLAY GALLERIES / SHOWCASES ARTISTS STUDIOS / OR RESTAURANT



UPPER/ REAR BALCONY LEVEL SEATING (APPROXIMATELY 100)

STAGE LIGHTING ETC CONTROL POINT

