



INFRASTRUCTURE OVERVIEW AND SCRUTINY COMMITTEE

Committee Report

Public

Date of Meeting: 14 September 2006

Title: LOCAL AREA AGREEMENT FOR CUMBRIA –
POSITION STATEMENT

Report of: DIRECTOR OF LEGAL AND DEMOCRATIC SERVICES

Report reference: LDS.61/06

Summary:

The report summarises for Members the current position in respect of the evolution of the draft Local Area Agreement for Cumbria, of which the City Council will be a part. A full copy of the draft Local Area Agreement as it currently stands has been attached for Members information. A more concise summary of the various targets to be met in each of the relevant areas has also been attached to assist Members in considering what the Agreement is intended to achieve.

Recommendations:

The Committee are asked to note the position and the timetable for processing the Agreement through to Ministerial sign off in February 2007.

Contact Officer: John Egan

Ext: 7004

1. BACKGROUND INFORMATION

1.1 Members will be aware that the Cumbria Strategic Partnership, on which the City Council is represented, is currently in the process of leading the development of the Local Area Agreement for Cumbria and may recall that presentations on the objectives of the Agreement were given on 24 May last by County Council Officers to which members were invited. By way of reminder, Members will recall that the basis of the Agreement is that relevant stakeholders will identify a range of broad outcomes and objectives for Cumbria and then the various partner and stakeholder organisations in the County will align their activity to meet the agreed objectives set out in the Agreement. The Agreement will then be signed off between the County Council (leading on behalf of the stakeholders) and GONW. Local Area Agreements (LAA's) are intended to be a new way of working, aimed at improving the effectiveness and efficiency of local authorities and their partners, so as to provide seamless services to people in the locality concerned through a jointly agreed strategy.

1.2 The LAA for Cumbria will cover 5 Thematic 'Blocks' as follows :

- Safer and Stronger Communities
- Children and Young People
- Healthy Communities and Older People
- Economic Development
- A cross cutting block currently called "Liveability"

The latter block (Liveability) is intended to be cross cutting and pick up aspects not caught in the other four blocks e.g. Planning, Housing, Sport, Environmental issues and Waste Management.

1.3 It is intended that the full Cumbria Agreement will be signed and go 'live' from April 2007 although, as Members will know, the LAA in respect of the Safer and Stronger Communities block has already gone live from April last.

1.4 The LAA for Cumbria is intended to cover the period from 2007 to 2010. The Government guidance on LAA's makes it clear that, in our context, Cumbria County Council will act as the accountable body and sign the LAA on behalf of all the relevant stakeholders in Cumbria, but it will do this by working with the Cumbria Strategic Partnership (CSP) to make sure that there is cross stakeholder support for all the initiatives set out in the LAA. The CSP, in turn, will need to work through each Local Strategic Partnership to make sure that there is demonstrable commitment across the board from all the relevant players in Cumbria to deliver the LAA outcomes.

2. DEVELOPMENT OF THE LAA

2.1 In terms of developing the LAA, there are 4 key phases to the process which are set out below as follows :

- Phase 1 involved evidence gathering and consideration of data to inform the selection of a draft Outcomes Framework identifying the broad areas of achievement expected of the LAA and these were required to be submitted to GONW by the end of June 2006. They have previously been considered by the Executive and the Carlisle LSP. A full copy of the current draft LAA is attached as Appendix 1 and the various outcomes and indicators setting out what the LAA is intended to achieve are tabulated in the LAA. This is only a draft at this stage and will be subject to revision over the coming months. A more concise summary of the relevant targets is attached as Appendix 3 for Members' assistance.
- Phase 2 is the development of detailed sub Outcomes, measures and targets which will make up the LAA. This is being led by each of the relevant Thematic Partnerships of the CSP, there being a specific Thematic Partnership set up to mirror each of the LAA subject 'blocks'. These will form the detail of the Agreement and are currently being worked up by the various Thematic Groups for approval. During this phase, consideration will also have to be given to the fund management arrangements that will be needed to operate the LAA from a financial perspective.
- Phase 3 will be the negotiations with GONW. It is currently envisaged that the Chairs of the relevant Thematic Partnerships will undertake this role and feedback to partners on progress.
- Phase 4 will be the preparation for and actual implementation of the LAA. A Performance Management Framework will be necessary to ensure that progress can be monitored and that there are clear lines of accountability in respect of the various targets to be delivered by each of the stakeholders. Delivery plans will also be required so that partners understand their respective roles and responsibilities.

2.2 As far as Phase 1 was concerned (the selection of a draft Outcomes Framework which will form the heart of the LAA), the current proposals for this are set out in Appendix 1 of the draft LAA attached. It is important to note that the draft Outcomes are an indication of the themes around which the LAA will develop further, and further detail of the relevant targets to be met over the life of the LAA will need to be added to the outcomes so that it is clear exactly what targets are expected to be met and by whom. As the document evolves and partners provide further comments, the Outcomes Framework may therefore need to change to respond to these.

- 2.3 In addition, the draft LAA will also set out those areas which partners have indicated they would like to look at for developing what is termed 'stretch' and these still remain to be worked up fully. The relevance of the 'stretch' targets is that there is a performance reward grant payable by GONW for success in achieving the 'stretch' targets. The detail of what the reward grant would be and how it would be distributed amongst the partners has not been agreed at this particular stage but will be addressed in phase 2 of the LAA's development. The principles for dealing with this will need to be developed and consulted upon and put to the CSP Executive so that it can be agreed by all the relevant stakeholders in the LAA.
- 2.4 The way in which the draft Outcomes Framework shown in Appendix 1 to the LAA has been arrived at is set out briefly below. The various partners have been engaged in assisting with its development in a variety of ways and it is intended that they will play an important role in developing and determining what the final LAA Agreement will contain.
- Key plans and community strategies from the various organisations involved (including the districts) have been used as a starting point for understanding what some of the current priorities are for the people of Cumbria as far as the respective partners see them.
 - Consideration of the LAA guidance (which notes a number of mandatory aspects which have to be included in the LAA) have been used to shape the Outcomes Framework.
 - Performance data on the relevant areas in the LAA was collated from the various partners across Cumbria and used to highlight where there might be particular issues in Cumbria which needed to be addressed. The CSP have organised events in each of the LSP areas (Carlisle's was held on 24 May last and a further one is planned for the 20 September) to raise awareness generally of the LAA and provide opportunity to comment on what issues the LAA should address and more of such events are planned.
 - The CSP Executive (upon which the City Council is represented) has received information reports on the evolution of the LAA and will be asked to approve the LAA at key stages in its development on behalf of the various partners it represents.
 - As indicated above, Thematic Partnerships which cover each of the relevant LAA blocks have been set up and are largely drawn from existing joint working groups across the County dealing with the subject areas. Membership of these partnerships includes the various stakeholders and the City Council are represented by their Lead Officers on some of them.

3. GONW RESPONSE TO THE DRAFT OUTCOMES FRAMEWORK

- 3.1 Both Carlisle's Executive and the Executive of the LSP considered the draft Outcomes Framework on 9 and 12 June respectively and submitted comments back to the County Council on the draft as it then stood.
- 3.2 The County's Cabinet in turn submitted the draft Outcomes Framework to GONW on 29 June for their initial observations.
- 3.3 Overall, GONW commented favourably on the draft submission. They said that the mandatory outcomes which they required to be in all LAA's were well covered and the cross-cutting themes set out in the LAA were a good start.
- 3.4 However, GONW flagged up the following points (and some others) on the draft which they said need further consideration :
- How the voluntary and community sector will be influencing the LAA.
 - The impact of the Equality and Diversity Working Group on the LAA.
 - The need to clarify references to some outcomes and indicators which were blurred.
 - Which funding streams are intended for inclusion in the LAA.
 - The need to ensure good governance and importantly, that Leaders and decision makers in District Councils, the voluntary and community sector and other partners are all fully engaged in negotiating and delivering the LAA. This is a key point and challenge.
 - The proposal to have a 5th block in the LAA relating to cross cutting issues should be revisited as it "lacks cohesion".
 - The list of "stretch" targets is long and should be reduced to about 12.
 - The Economic Development Block included good partner "buy in" and had good links to the planning system.
 - The Children and Young People's block focussed well on key issues such as child protection and post 16 participation and issues on teenage pregnancy were worth developing.
 - The inclusion of domestic violence under Safer Communities was welcomed, as was the range of issues identified in the Healthy Communities block.

- 3.5 Some of these issues have been addressed in the revised draft LAA attached. However, there is still much work to do on the draft document to address all the points raised by GONW set out above and to complete all the various targets which the LAA seeks to meet, including which funding streams will be directed through the LAA and how any performance reward grant payable is to be shared. All these issues will need to be addressed prior to ministerial sign off in February next.

4. TIMETABLE TO FINAL APPROVAL OF THE LAA

- 4.1 The current timetable produced by the County Council to take the draft Agreement from where it is now to the worked up final detail for approval by the Cumbria Strategic Partnership and final sign off by the County (on behalf of all the partners) and GONW is as follows :

17 August 2006	Partner comments on working doc for initial draft to the County
6 September 2006	CSP Executive to agree initial draft
26 September 2006	CCC Cabinet to agree initial draft
30 September 2006	Submission to GONW of initial draft
3 November 2006	Partners comments on developing agreement back to the County (note that negotiations may be ongoing at this time)
22 November 2006	CSP Executive agree final draft
28 November 2006	CCC Cabinet agree final draft
1 December 2006	Final submission to GONW
15 December 2006	Approval from partners required for sign off
9 January 2007	CCC Cabinet sign off
18 January 2007	CCC Full Council sign off
10 February 2007	Ministerial sign off

4.2 It is proposed that the detail of the LAA will be worked up to the point where it is ready for signature between now and the end of February next when it receives Ministerial sign off. During this period, there will be ongoing consultation on and redrafting of the Agreement between GONW and the County, representing all the partners and stakeholders in Cumbria. The process is summarised in the attached letter at Appendix 2 from the County's Director of Strategy and Performance. Members will see that it is envisaged that the document will change during the detailed negotiation phase as the outcome targets are worked up and it may be necessary to present future reports for comment depending on the nature of any changes. The County Council letter envisages that, as far as all the District Councils are concerned, their respective Executives will have approved the final draft by the end of December next.

4.3 The proposed timetable may vary but will nonetheless be very tight and there is not much room for slippage. It is important to make sure that both the City Council and the Carlisle LSP have an input during the finalisation of the hard targets and financial provisions which will be part of the LAA and which will be worked up over the coming months as the draft Agreement goes through its anticipated redrafting stages. This will need to be achieved through various routes as follows :

- Contacts with and membership of CSP's Thematic Partnerships which are going to be tasked with working up the detail of the LAA.
- Working with our own LSP Priority Groups and Portfolio Holders and internal officer representatives so that we have an input into the evolution of the LAA as it is put together.
- Formal consideration by our Executive and LSP of any matters on which they are consulted.
- Keeping an overview on the position through our membership of the CSP where both the Leader and the Town Clerk and Chief Executive represent us.

The County Council are arranging a further briefing event on the development of the LAA on the 20 September in Carlisle and invitations will be sent out to members shortly.

4.4 Members may be aware that the County Joint Scrutiny Group has agreed that an examination of the LAA will be an appropriate subject for a joint scrutiny. A Task and Finish Group with one elected member from each district has been established to

undertake this and Councillor Styth has been nominated by Corporate Resources Committee as the City Council's representative.

5. CONSULTATION

- 5.1 The tight timetable to some extent dictates this, but previous reports have been submitted to the Executive, the Community Overview and Scrutiny Committee, the Executive of the Carlisle LSP, as well as the CSP Executive upon which the Council is represented. It has also been considered by Officers of the City Council who represent the City on the various partnership working arrangements and a presentation open to Members on the format of the LAA was made by the County Council on 24 May last.

6. RECOMMENDATIONS

The Committee are asked to note the position and the timetable for processing the Agreement through to Ministerial sign off in February 2007.

7. REASONS FOR RECOMMENDATIONS

To appraise the Overview and Scrutiny Committee of the current position regarding the LAA for Cumbria.

8. IMPLICATIONS FOR STAFFING

- Staffing/Resources – There will be a call on staff time in contributing to the finalisation of the LAA and there may be a draw on City Council staff time in order to deliver the final targets selected for the LAA in due course.
- Financial – None at this stage, although details of the reward element in the 'stretch' targets in the Outcomes Framework still have to be negotiated on behalf of the various stakeholders involved in the LAA.
- Legal – The County Council are to be the Accountable Body in respect of the LAA and to take the lead in signing it off with GONW, having used the Cumbria Strategic Partnership as a broad sounding board to construct the Agreement. Thought will need to be given as the Agreement evolves as to how any aspect of the Agreement needing consideration is correctly fed through both the Council's own processes and through the Carlisle LSP.
- Corporate – The various targets under the LAA should be geared to reflect the City Council's own corporate priorities wherever possible.

- Risk Management – The County Council are to be the Accountable Body opposite GONW in respect of the LAA, and so the City Council should not directly be handling funding as such. Collectively, all the partners on whose behalf the LAA is signed will need to make sure that they have arrangements in place to enable the various targets signed up to opposite GONW to be delivered to ensure that the appropriate GONW funding is triggered in respect of any performance reward grant.
- Equality Issues – Any work undertaken in delivering the targets on behalf of the City Council will be in accordance with the City's own equality policies. Given the composition of the other stakeholders under the Agreement, it is assumed that they will have similar equality policies in place.
- Environmental – Some of the targets, particularly those in respect of the Liveability block, do have environmental implications and are consistent with the City Council's own key priority of Cleaner, Greener, Safer.
- Crime and Disorder – Similarly, the targets set out in the Safer and Stronger Communities block have implications for crime and disorder issues and are consistent with the City Council's own objectives in this area.



The Cumbria Agreement

Draft Local Area Agreement for Cumbria

Version	Date	Author
3	1/09/06	H Blake

Contents

1. **Introduction** - this section will set out the vision and broad objectives of what partners in Cumbria intend to achieve through the agreement.
2. **Context** - summary information about the geography, population, economy of Cumbria.
3. **Cumbria's Approach to developing the agreement** - this section will outline the broad approach taken in developing the agreement, including the way partners have engaged in the process. It will also cover the approach taken to ensure that issues such as sustainability and equity have been considered in the agreement.
4. **Key Issues** - this section will outline key issues, block-by-block, highlighting particular cross-cutting themes
5. **Appendix 1: Outcomes and indicators** (subject to change - further development ongoing)
6. **Appendix 2: Stretch Targets** (template included - targets in development)
7. **Appendix 3: Enabling Measures** - business cases (template included - business cases in development)
8. **Appendix 4: Statement of Community Involvement** (draft text available - still in development)
9. **Appendix 5: Partnership working and Governance arrangements** (text in development)
10. **Appendix 6: Performance Management Framework** (text and proposals in development)
11. **Appendix 7: Key funding streams aimed at "narrowing the gap"**
12. **Appendix 8: Neighbourhood Renewal outcomes and targets** (table in development)
13. **Appendix 9: List of partners**

14. **Appendix 10: Sustainability Impact Assessment Methodology (to be inserted)**
15. **Appendix 11: Equity Screening (to be inserted)**

DRAFT

SECTION ONE

Introduction

(text still in development)

This is the first Local Area Agreement (LAA) for Cumbria which sets out a number of key priorities for the people of Cumbria that partners will work together on over the next three years.

It has been developed through the Thematic Partnerships of the Cumbria Strategic Partnership (CSP) and in consultation with various other organisations and partnerships. It has drawn on the Community Strategies of all the Local Strategic Partnerships (LSPs); and builds on the Sub Regional Strategy - Sustainable Cumbria.

The LAA has provided an opportunity to further strengthen partnership working across the county. The development process has identified a range of issues that, if effectively addressed; would improve the quality of life for people in Cumbria. An increased collective understanding of what these issues are is just one of the benefits we are seeing as a result of the months of work in preparing the LAA.

In addition to this, the LAA is providing a focus for discussions about using the available funding that comes into the county more efficiently. By learning from each other about the range and type of services provided; along with understanding what works well, should lead to more focused and effective delivery.

SECTION TWO

Context

Geography

Cumbria is located in the north west of England. It is the second largest County in England with a land area of 6,767 km². Its boundaries stretch from Morecambe Bay in the south to the Solway Firth and the Scottish border in the north. The largest settlements in the County are Carlisle, in the north east corner, and Barrow in the south west. Other large towns include Whitehaven, Workington, Kendal and Penrith. The Lake District National Park, and part of the Yorkshire Dales National Park, is located in the County.

The County is a two-tier local authority area comprising Cumbria County Council and six District Councils: Allerdale Borough Council; Barrow Borough Council; Carlisle City Council; Copeland Borough Council; Eden District Council; and South Lakeland District Council.

Cumbria is the only County in England who's entire land area is more than 50 km from a settlement with a population of over 100,000. The West Coast Main Line railway runs through the County, as does the M6 motorway.

Population

Cumbria's resident population is 494,800 and has been growing slowly over recent years. Over half of this population lives in areas classified as rural, compared to less than a fifth in England overall. The County's population has been ageing at a much faster rate than the national average with the number of 15-29 year olds falling by a quarter since 1981 and the number of over 85 year olds doubling. These trends are forecast to continue for the foreseeable future with the fastest growth in rural parts of the county.

Economy

Cumbria's economy generates around £6bn of Gross Value Added per year. Its overall GVA growth rate since 1995 (23.2%), however, is the slowest for any county in the UK (53.6%). The county's overall employment rate is higher than the national figure. However, this countywide figure masks pockets of high levels of worklessness and incapacity benefit claims. In addition the average wage in the county is 10% less than for England.

Key employment sectors include manufacturing, tourism, retail and the public sector. A large proportion of the county's employment is concentrated in a relatively small number of business, including the British Nuclear Fuels site at Sellafield, the BAe Systems shipyard in Barrow and the Center Parcs holiday village in the Eden Valley. Major job losses at any of these employers would have a significant impact of the socio-economic profile of the county as a whole.

SECTION THREE

Cumbria's Approach to Developing the Agreement *(text still in development)*

The Agreement has been developed with a wide range of partners; all of which are listed in the document (appendix 9.) The Thematic Partnerships of the CSP, District Councils and the LSPs have all played a significant role in developing the content of the agreement and the arrangements necessary to allow for its operation. Diagrams 1 and 2 provide details of the strategic context; and the relationship between these partners and partnerships.

Developing Content

Partners have worked hard to develop content using a variety of tools. The need for the agreement to stem from a robust evidence base, through constructive challenge and consultation, and build on the community strategies was acknowledged from the start. A summary of key activity undertaken to achieve this is provided below.

- An initial mapping of priorities from key plans and strategies was undertaken in August 2005. This highlighted the key issues that partners were working to address; and linked these to the LAA guidance that was available at that time. All the community strategies in place at that time were included in this.
- An evidence base was also established by collating performance and trend data which related to the shared priorities the strategy map had produced and the long list of potential indicators from LAA guidance.
- Thematic Partnerships were presented with this information in order to start discussions about what the draft outcomes framework should include. Initial suggestions about content were made available to partners via the CSP website; and were presented to attendees at locality based events for comment. A range of partners from the public, private, voluntary and community sectors were invited alongside elected Members to these workshops.
- Thematic partnerships have continued to develop indicators and targets through various working groups and meetings. Challenge days have been run by a number of the partnerships in order to gain the objective views of partners and individuals not involved in the detailed development work.
- A Sustainability Impact Assessment was undertaken at an early stage in the process (August 06) when outcomes and sub-outcomes were emerging. A panel comprising representatives from LSPs used a sustainability framework developed to reflect national and regional

- policies on sustainable development to do this (see appendix 10.) The report presented a challenge to thematic partnerships about how to address some aspects of a sustainable Cumbria and provided useful opportunity to reflect on content.
- An updated version of the draft LAA was also made available for comment on the CSP website once a fortnight from 4th August onwards. An e-mail alert prompted partners to consider the drafts and provide feedback.

An Inclusive Agreement

Cumbria has been keen to develop an agreement that addresses and is mindful of the range of more vulnerable or disadvantaged communities and people within the county and their needs. Issues relating to areas in receipt of Neighbourhood Renewal Funding, West Cumbria, equality, diversity and rurality have received particular consideration. In order to do this the final agreement will have been screened and proofed with a number of issues in mind, in order to ensure that the negative impact on these groups has been considered (see appendix 11.) There are plans to use evolving countywide groups to support this process in future years and partners will consider the effectiveness of this general approach at the end of year one of the LAA so that it can be re-considered and amended if necessary.

(Note: A further “proofing” exercise will be undertaken on the targets during September that will inform the submission made to GONW on 29th September; and which should influence action plans that will be developed during the Autumn.)

- **Area in receipt of Neighbourhood Renewal Funding**

The aim of Neighbourhood Renewal is to improve the quality of life for those living in the most disadvantaged areas by tackling worklessness, crime, health, education housing and the living environment. The Government allocates Neighbourhood Renewal Fund to some of the most disadvantaged areas in the country to help narrow the gap between those areas and the rest. There are mandatory outcomes and targets that must be included in the Cumbria Agreement as some areas in the county are in receipt of Neighbourhood Renewal Funding. Work with partners is underway to ensure that neighbourhood renewal objectives are appropriately reflected in the agreement and that suitable data and performance management arrangements are in place to support this.

- **West Cumbria Proofing**

It is essential that consideration is given to the impact the LAA will have on West Cumbria; in particular the economy.

- **Equality and diversity**

In addition to the statutory responsibilities that organisations have in the field, specific work has and will continue to be undertaken to ensure that targets and activity directed by the LAA will not discriminate against individuals or communities. The CSP race and diversity group, once better established, should be able to provide expert knowledge on the issues of equality, race and diversity.

- **Rurality**

The Regional Rural Delivery Framework has been considered in developing the LAA; as have the challenges faced by rural communities. Targets that will be particularly relevant from a rural perspective will be “tagged” for monitoring. The Rural Forum may play a key role in this area at a later date in providing expert knowledge in this area; and may act in many ways as a reference group in the future.

Diagram One: Relationships Between the LAA, Partners' Strategies and Plans

RES - Regional Economic Strategy
 SIP - Strategic Investment Plan
 RHS - Regional Housing Strategy
 RTS - Regional Transport Strategy
 RRDF - Regional Rural Delivery Framework
 RSDF - Regional Strategic Development Framework
 RSS - Regional Spatial Strategy

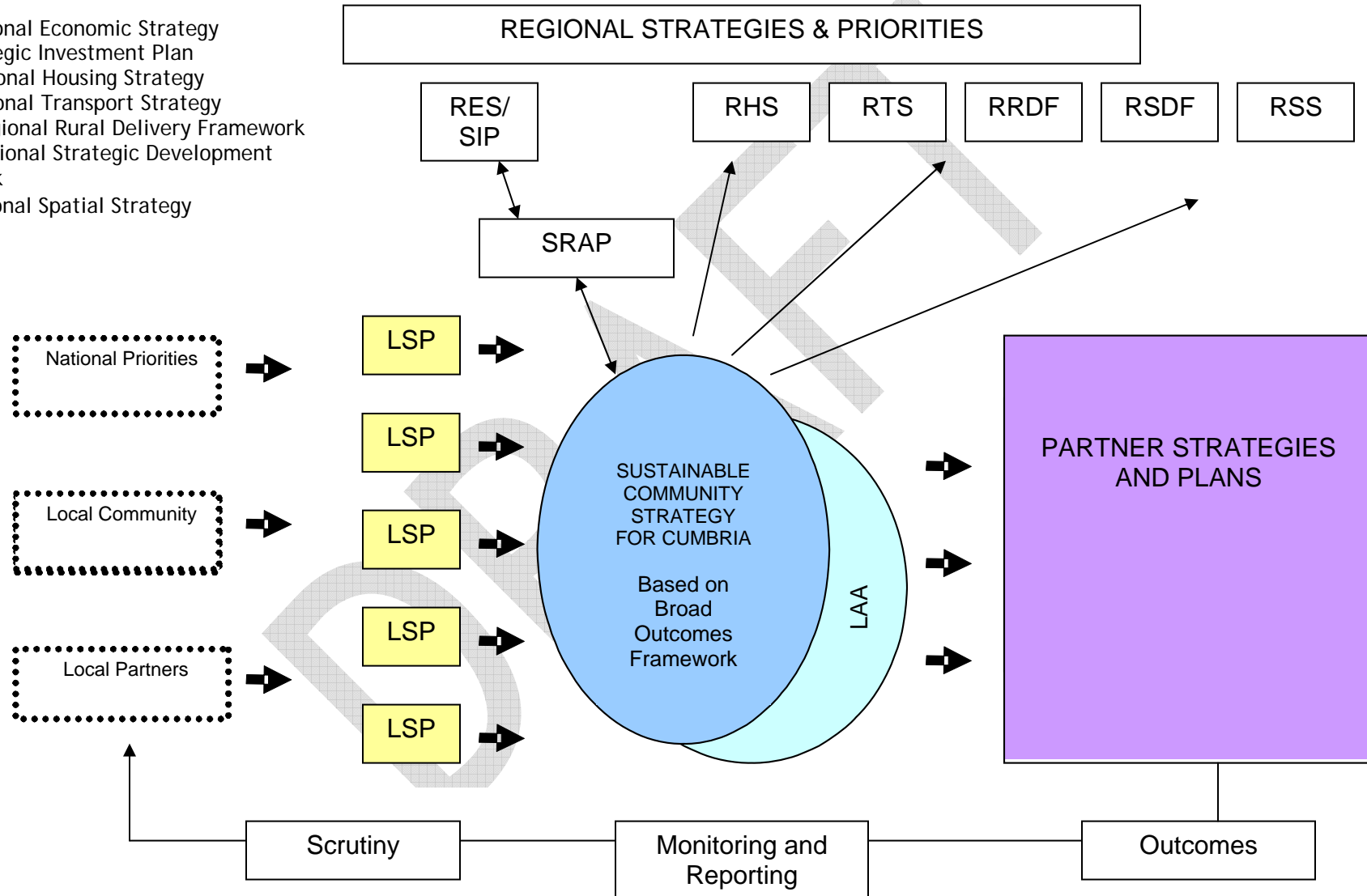


Diagram 2: CSP Structure

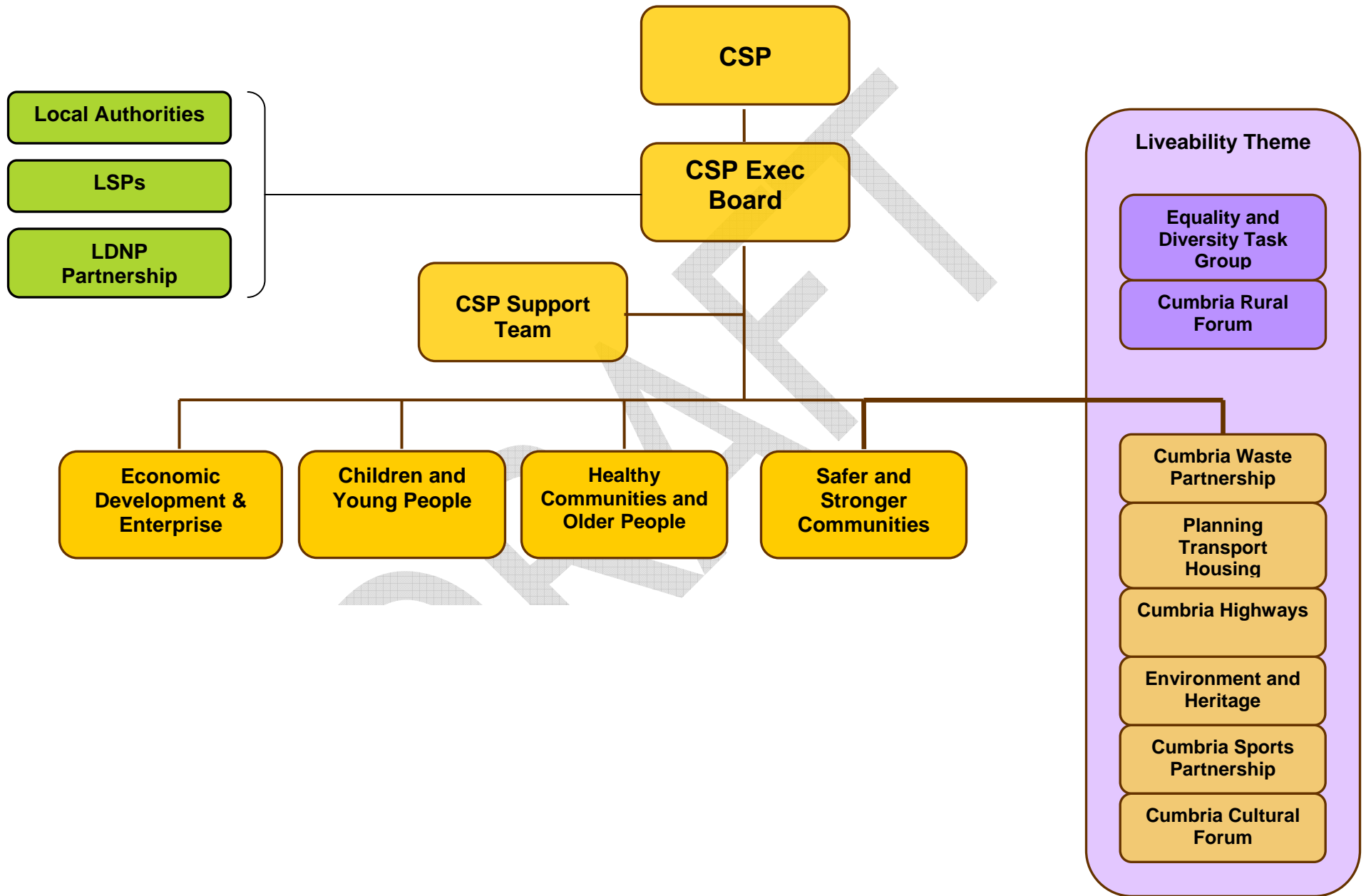


Diagram Three: Alignment of LSP task groups with Thematic Partnerships

	Cross Cutting Partnership Group						
CSP Thematic Partnerships	Children and Young People's Board	Healthier Communities and Older People	Safer and Stronger Communities	Economic Development and Enterprise	Cumbria Waste Partnership		
					Planning, Transport and Housing		
					Cumbria Highways		
					Environment and Heritage		
					Cumbria Cultural Forum		
					Cumbria Sport Partnership		
					Equality and Diversity Task Group		
					Cumbria Rural Forum		
Furness Partnership	No specific Task Group	Health Task Group	CDRP	Employment Task Group	Housing Task Group	Environment	
				Regeneration Task Group		Children & Young People	
Carlisle LSP	CYPB Priority Group	HCOP Priority Group	SSCF/CDRP Priority Group	Economic Priority Group	Cross Cutting Groups Rural Issues, Environment, Carlisle Renaissance		
Eden LSP	Young People- (incl activities for teenagers)	Health	Carlisle and Eden CDRP	Eden Economic Forum	Eden SPAA		
			Eden CVS		Environment		
					Equit. access to services incl affordable housing		
					Eden Cultural Forum		
West Cumbria Strategic Partnership	CYPB	HCOP	Stronger	Safer	ED&E	Living Environment (inc Cleaner Safer Greener)	
South Lakeland LSP	CYPB	Health and Well Being	CDRP/ Community Involvement Group/ Environment Group		Job Skills	2 Task Groups Affordable Housing, Accessible Transport	2 Task Groups Quality Environment, Culture

SECTION FOUR

Key Issues for Cumbria (text still in development)

Cross Cutting Issues

In developing the LAA a number of issues have emerged that are of real significance to all blocks of the LAA and Thematic Partnerships. Whilst the content of the LAA is generally all of a cross cutting nature; these things need to be highlighted as of particular importance in the county. If these issues are addressed they would impact enormously on the quality of life for the residents of Cumbria. By including these issues in the LAA the partners of Cumbria are committing themselves to work together to address these challenges which should reap rewards across the board.

Access to services.....

Alcohol use.....

Housing.....

(Text in development)

The Importance of Culture in Cumbria

Cumbria's landscape, tradition of sporting and artistic excellence has a key role to play in the LAA. Encouraging people to become involved in arts, sport and cultural activity will be extremely important in achieving the aspirations of the agreement. The ambition to create a county of opportunity where people feel proud of being Cumbrian and where they can explore and fulfil their potential underpins the delivery of a wide range of activity that each block of the LAA will benefit from. Work will be undertaken that should result in more people taking part in sport and cultural activity; more people visiting Cumbria to experience our cultural offer; and more opportunities for young people to develop their creative ambition within the county.

Economic Development and Enterprise

Cumbria faces a number of challenges to improve both economic and social conditions in the County. Steps have been taken over the past 5 years, however, to help create the right environment to increase investment and economic growth. These include the creation of urban and rural regeneration companies and ensuring a full recognition by Government of the need for concerted action to deal with the restructuring of the nuclear industry in West Cumbria. Inroads have been made but much remains to be done and the development of Cumbria's Local Area Agreement provides an opportunity for an extension to the strong partnership working that is undertaken to secure Cumbria's economic revival.

Cumbria has been described as a County of contrasts (Sustainable Cumbria 2004-2024) and this is well demonstrated in the juxtaposition of outstanding landscape, at the heart of which is the Lake District National Park, alongside areas of major manufacturing and the nuclear facility of Sellafield. This contrast further applies to its economy. Within its boundaries, there are some local areas that are amongst the most deprived in the UK alongside others where incomes are above average. Some places exhibit high levels of unemployment while others have strikingly low numbers of unemployed. The overall picture is, however, of a county that is now the worst performing sub-region of the UK in terms of Gross Value Added. Across Cumbria there are many families that survive on very low incomes and in the industrial communities in Furness and West Cumbria worklessness and hidden unemployment are markedly severe.

It is on this canvas that major and lasting change must be achieved. It will not be easily delivered and the trends of the last ten years, which have seen the economy of the County deteriorate sharply relative to the rest of the country, will need to be arrested.

Job losses and closures have affected the manufacturing sector in particular where levels of GVA per worker are relatively high. There has been employment growth in other activities between 1999 and 2003 but new jobs have tended to be in low GVA sectors. The most prominent growth has occurred in retailing, hotels, restaurants and public sector services. The succession of closures in of businesses in the manufacturing sector, however, means that industrial employment in West Cumbria and Furness is even more dependent on the nuclear sector than five years ago and employment in financial and business services remains under-represented. In short, there has been insufficient strength elsewhere in the economy to compensate for the continued losses in manufacturing industry and hence the continuing and dramatic decline in the relative wealth.

There are 24 specific localities (super output areas) that are in the ten percent most deprived areas and within that category 7 areas are in the worst 3% across the whole of England and Wales. Deprivation is also a feature of rural areas but, with the exception of poor access to services and transport difficulties, the scale of the problem is often masked by statistical averages. Rural deprivation tends to focus at the level of individual households that depend on low wage employment and experience long hours associated with multi-jobbing.

Recent surveys continue to show the concerns of employers about basic skill levels in the labour market and difficulties in recruiting staff in specialist fields such as engineering and other appropriate technical qualifications. There is a reported weakness too in the value adding sectors in financial and professional services.

Safer and Stronger Communities

From safer communities perspective, Cumbria enjoys low levels of crime but that brings with it the challenges of keeping crime low, avoiding complacency and reducing fear of crime. Although crime is falling, perceptions of issues such high levels of anti social

behaviour, drug use and drug dealing are not falling at the same rate. Lower level signal crimes such as criminal damage, vandalism and graffiti account for almost 25% of recorded crimes and there is commitment from the Safer and Stronger Communities Thematic Partnership to tackle these issues.

Within Cumbria there are a wide range of organisations contributing to this block and its outcomes. Some of these partners have a focus on the safer aspect; others on stronger and there are also partners who will contribute to both elements of the block. By drawing on local knowledge and issues that are common across the county, partners have been able to provide the strategic and operational thinking required to develop the detail of the agreement.

Partners that are particularly pertinent to developing the submission for this block are the four Crime and Disorder Reduction Partnerships, all Local Strategic Partnerships, the Drug and Alcohol Action Team, Cumbria Constabulary, the Fire and Rescue Service, the Local Criminal Justice Board, Youth Offending Service, the Probation service, the District and County Councils, Community Empowerment Networks and representatives from the Voluntary and Community Sector. This list is by no means exhaustive but provides a flavour of where contributions have come from.

In addition, establishing a new approach to partnership working in this area allows a real opportunity to integrate the crime reduction agenda with the work of the Drug and Alcohol Action Team (DAAT). There are clear links between violent crime, alcohol and substance misuse generally which will be easier to identify and develop initiatives around as a result. The newly launched DAAT Strategy has been used to strengthen the Safer and Stronger Communities content and a range of indicators are drawn from that strategy into this part of the LAA.

Safer communities are not just about low levels of crime. A safer community will also have lower levels of fire related deaths and injuries and victims such as those who suffer domestic violence will have confidence that the system will deliver justice on their behalf

This is reflected in the three principle areas chosen for stretch targets of:

- Tackling Prolific and Priority Offenders
- Increasing the number of Domestic Violence Convictions
- Reducing the number of Fire Related Deaths and Injuries.

In terms of building strong communities we recognise that Cumbria is a diverse county with a range of different communities within it. Partners are aware of this special heritage and are working hard to continually improve the delivery of its services in ways that reflect the various communities that it serves.

High quality community engagement enables public services to continuously improve by creating active relationships with local people. This ensures that service providers and communities are looking ahead together, building resources into services that are relevant to changing local needs.

There is wealth of research to support the assertion that when communities are able to play a significant role in improving their neighbourhood through planning and developing a project or initiative; they are more likely to develop a greater sense of responsibility and

protection towards it. In many situations strong, vibrant working relationships have developed, resulting in thriving projects and activities that have made a lasting difference to local well-being. These successes have been entirely dependent on dynamic collaboration between local communities, local authorities and partners.

It is hoped that the performance indicators within the stronger element will compliment this and contribute to making communities stronger and safer.

Children and Young People

(text in development)

Healthy Communities and Older People

Priorities agreed by partners across Cumbria are:

- To lessen the harm to health from alcohol consumption
- To reduce the prevalence of smoking
- To improve mental health and wellbeing
- To combat the rise in obesity
- To improve the health of people with a learning disability

These priorities have been chosen as they both address the areas of health inequality and promote improved health for all residents in Cumbria.

Health inequalities in Cumbria

Life expectancy for males nationally and regionally has risen steadily since 1996. However, the situation is a little more mixed in Cumbria with fluctuating rates in several districts. Only South Lakeland and Eden have male life expectancy higher than the national average. In Barrow, male life expectancy is significantly lower than the national average and the only district which is also below the North West.

The picture for female life expectancy in Cumbria is similarly mixed. Life expectancy in Eden and South Lakeland has been consistently above the national and regional average since 1996 and in Carlisle the female life expectancy has risen since 1999 to just below the national rate. On the other hand, female life expectancy in Allerdale has fluctuated more recently and in Copeland it has actually fallen slightly.

Mortality from heart disease is higher than the national average in all Cumbria's districts with the exception of South Lakeland where rates for males and females are below average, and in Eden where male rates are below average. However, in Eden, female mortality from heart disease is significantly higher than average. Allerdale is the only other district where female mortality from heart disease is higher than male mortality.

People in Barrow are more likely to die from some form of cancer than the national average while those in South Lakeland are less likely to do so. In Carlisle and Copeland, deaths from cancer are very similar to the national figure for both males and females while in Allerdale, male cancer mortality is lower than the national average but female mortality is higher.

Incidence of smoking among all persons aged 16+ in the Cumbria and Lancashire Strategic Health Authority area has gone from being significantly above the national average in the mid 1990s to just below in the late 1990s but more recently has risen to just above. The regional rate overall remains higher than in the Cumbria and Lancashire Strategic Health Authority area.

In terms of gender, the incidence of smoking among males in the Strategic Health Authority area has followed a similar trend to regional and national trends and has been below the national rate since the late 1990s. On the other hand, female smoking rates, whilst below the regional average, have been consistently above the national average.

Alcohol consumption - *text to be developed*

DRAFT

Appendix 1: Outcomes and indicators (subject to change - further development ongoing)

Outcomes, indicators and targets (mandatory and non mandatory)

BLOCK - CHILDREN AND YOUNG PEOPLE							
Outcome	Sub Outcome	Indicators	Baselines 2006/07 (Unless otherwise stated)	Targets 2007/08 (including any stretch targets, and their annual unstretched targets)	Targets 2008/09 (including any stretch targets, and their annual unstretched targets)	Targets 2009/10 (including any stretch targets, and their annual unstretched targets)	Lead partner (still subject to agreement)
CYP 1 Be Healthy	CYP 1.1 Promote healthy living within an active lifestyle	Improve oral health by reducing incidence of tooth decay	Average number of decayed / missing / filled in children aged 5 1.9	1.7	1.5	1.4	Primary Care Trust
		Reduce the rates of childhood obesity					Primary Care Trust

		Increase the % of schools achieving healthy school standards in wards of deprivation Potential Stretch Target					
		Increase the rate of breast-feeding		Plus 2%	Plus 2%	Plus 2%	Primary Care Trust
	CYP 1.2 Support young people in making informed choices about contraception and parenthood	Reduction in the under 18 conception rate	31 per 1000	26	23.5	21	
		Chlamydia screening					Primary Care Trust
		Increase percentage of 16-19 teen parents in Education, Employment or Training	40%	50%	55%	60%	
	CYP 1.3 Modal share in travel to school	<u>Mandatory where School Travel Advisors Grant is received</u> Modal share in travel to school	44%	75%	80%		Cumbria County Council
CYP 2 Enjoy and Achieve	CYP 2.1 Improve access to support for groups of	Reduce incidence of anti-social behaviour					

	children at risk of social exclusion and those in the most disadvantaged areas	Increase access to opportunities in sport, leisure and culture					Cumbria County Council
		NEET into EET for key groups including LLD Potential Stretch Target					
		Housing for young people and families					
		Reduce % of low-income families in areas of deprivation					
		Increase take up of correct benefits and tax credits					

	<p>CYP 2.2 Raise standards in English, maths, and science in secondary education so that, by 2008, in all schools located in the districts in receipt of NRF, at least 50% of pupils achieve level five or above in each of English, maths and science</p>	<p><u>Mandatory for areas in receipt of NRF</u> By 2008 all schools located in Local Authority Districts in receipt of NRF to ensure that at least 50% of pupils achieve level five or above in each of English, maths and science Potential Stretch Target</p>					
<p>CYP 3 Achieve economic well-being</p>	<p>CYP 3.1 Increase post-16 achievement measured by a decrease in NEET</p>	<p><u>Mandatory where Connexions funding is received</u> Percentage of 16-18 year olds not in education, employment and training Potential Stretch Target</p>	6.4%	6.0% 5.8%	5.7% 5.3%	5.3% 4.8%	

	CYP 3.2 Improve access to accommodation for young people making the transition to adulthood						
CYP 4 Stay Safe	CYP 4.1 Work more closely together to strengthen safeguarding arrangements for vulnerable children and young people and their families	Increase number of parents in drug treatment.					
		Increase reported rates of domestic violence	BVPI 154 5334				
		Increase access to support services for families experiencing domestic abuse (percentage of repeat victimization)					
		Improve access to treatment for parents with mental health problems.					

	CYP 4.2 Reduce bullying	Increase % of reported incidence which stopped following effective intervention (measured by survey)		Reduce by 3% year on year			
CYP 5 Make a Positive Contribution	CYP 5.1 Support young people in making a positive commitment to society	Number of young people involved in the design and delivery of services by need, group and type					
		Reduce levels of offending					

Proposals for 'stretch' targets are being developed

Funding Stream information Children and Young People Block

Funding streams to be pooled centrally

Funding streams	Allocation		
	07/08	08/09	09/10
Children's Services Grant Key Stage 3 - Behaviour and Attendance Key Stage 3 - Central Co- ordination Primary Strategy Central Co-ordination School Travel Advisers School Development Grant (LEA element only) As per guidance. The CYPSPB need to discuss how the pooling will work in relation to the LAA priorities and made decision on optional pooling			

Enabling measures for Children and Young People Block

Agreed enabling measures	
Enabling measures under discussion and the adjustment to targets to be made should they be agreed	

BLOCK - HEALTHIER COMMUNITIES AND OLDER PEOPLE							
Outcomes	Sub Outcomes	Indicators	Baselines 2006/07 (Unless otherwise stated)	Targets 2007/08 (including stretch targets, and their annual unstretched targets)	Targets 2008/09 (including stretch targets, and their annual unstretched targets)	Targets 2009/10 (including stretch targets, and their annual unstretched targets)	Lead partner
HCOP 1 Improved health and reduced health inequalities	HCOP 1.1 Improved health and reduced health inequalities	<u>Mandatory Indicator in Spearhead areas</u> Reduce health inequalities between the local authority area and the England population by narrowing the gap in all-age, all-cause mortality					Primary Care Trust
		<u>Mandatory (optional for Spearhead areas)</u> Reduce health inequalities within the local area, by narrowing the gap in all-age, all-cause mortality					Primary Care Trust

	HCOP 1.2 Less harm to health from alcohol consumption for Cumbrian people	Increase the numbers of multi-agency professionals receiving alcohol brief interventions training	To be identified but available from PCTs 2005/06 - 155 participants 2006/7 to be inserted from PCT data	10% annual increase on 2006/07 figures proposed for LAA			Primary Care Trust
		Reduce waiting times for access to Tier 3 alcohol treatment services	Being established in 2005/06 between 2 - 20 weeks in different parts of Cumbria			To equal waiting times for illegal drug treatment by 2010	Primary Care Trust
		Increase numbers of individuals in contact with Tier 3 alcohol treatment services	1185 for 2005/6, 2006/7 figures to be inserted				Primary Care Trust
	HCOP 1.3 Reduce harm caused by illegal drugs in Cumbria	Number of individuals in contact with Tier 3 drug treatment services	2005/6 1,412 2006/7 1,459	1,512	LDP target plus 3%		Drug & Alcohol Action Team

		Reduce waiting times for access to Tier 3 drug treatment services	2005/6 NHS specialist and shared care 3.9 weeks Structured day care 1.4 weeks Counselling 5.5 weeks			Less than 2 weeks	Drug & Alcohol Action Team
		Number of drug treatment completions (in year)	To be developed - 5% year on year improvement				Drug & Alcohol Action Team
	HCOP 1.4 Improve mental health and well-being for the people of Cumbria	Decrease the numbers of people who repeatedly self-harm					Primary Care Trust
		Reduction in suicide					
		Improve support for people with dementia and their families and carers					
	HCOP 1.5 Improve the health of people with a learning disability	Increase the number of people with learning disabilities who have health action plans	Being established				

	HCOP 1.6 Reduce premature mortality rates and reduce inequalities in premature mortality rates between wards/neighbourhoods with a particular focus on reducing the risk factors for heart disease, stroke and related diseases (CVD) (smoking, diet and physical activity)	<u>Mandatory for areas in receipt of NRF</u> Reduce premature mortality rates from heart disease and stroke and related diseases so that the absolute gap between the national rate and the rate for the district is reduced by (x)% by 2010 (x to be agreed as part of the contribution to the reduction in the gap between the Spearhead Group and the England average)					Primary Care Trust
		<u>Mandatory for areas in receipt of NRF</u> Reduce the gap in premature mortality rates between the most deprived 20% of wards/neighbourhoods with a particular focus on reducing the gap in smoking prevalence					Primary Care Trust

	HCOP 1.7 Reduce the prevalence of smoking across Cumbria	Adult smoking rates as measured by 4 week quitters Proposed Stretch Target	Likely to be 7220 (2005/06) 2006/07 baseline to be established, likely to be 7292	7365 (unstretched)	7439 (unstretched)	NHS Local Development Plan to be finalized for this year - to be inserted 7587 stretched target	Primary Care Trust
		Adult smoking rates as measured by 52 week quitters	Targets to be established				Primary Care Trust
		Number of test purchases and % of retailers who refuse to sell tobacco to underage young people	To be established for 2006/07	30 test purchases - 80% refusal	30 purchase attempts - 89% refusal		Cumbria County Council
		Number of tobacco sales refused at vending machines	To be established	10 purchase attempts - 50% refusal	10 purchase attempts - 59% refusal		Cumbria County Council
		Reduce the amount of counterfeit tobacco product available	Respond to intelligence and complaints				Primary Care Trust
		Percentage of pregnant women who are not smoking on delivery	Essential measure				Primary Care Trust

	HCOP 1.8 Combat the rise in obesity in Cumbria	Percentage of adults taking part in moderate intensity sport and active recreation for 30 minutes 3 days per week	Develop figures from Cumbria active Sport survey October 2006 (Interim results from October 2005 - April 2006 show participation rate of 18.5% for Cumbria against a national average of 20.5%)	Target increase 1% per year for each year of the LAA on 2006/07 figures			Primary Care Trust/Cumbria Sport
		Number of leisure facilities providing sessions for people over 50	Baseline to be set				Primary Care Trust
		Number of partnership schemes enabling adults to adopt healthy lifestyles in Cumbria	Baseline to be set				Primary Care Trust
	HCOP 1.9 Breastfeeding	Initiation rate at birth	Baseline to be set				Primary Care Trust
		Numbers breastfeeding at 6 weeks	Baseline to be set				
		Numbers breastfeeding at 6 months	Baseline to be set				

HCOP 2 Independence Well-being and Choice	HCOP 2.1 People helped to live independently and safely at home	Numbers accessing Telecare package	100 estimated for 2006/07	200	300	400	
		Numbers of small pieces of OT equipment supplied from integrated equipment store after assessment by multi- agency professionals (PAF D54 BV56)	2006/07 target is 16,000	16,800	17,600	18,400	
HCOP 3 Improved Quality of Life for older and disabled people in Cumbria	HCOP 3.1 Maximise income for older people	Numbers of new people successfully claiming Attendance Allowance and Pension Credit	To be established				Age Concern
		Number of Direct Payments / Individual Budgets for older and disabled people (C51 in PAF) Proposed Stretch Target	2006/07 target (unstretched) is 125 per 100,000 of the population	150 unstretched	175 unstretched	200 unstretched	
	HCOP 3.2 Better advice and information	Number of people receiving information, advice and support from advice and information network according to nationally recognized categories	To be established				
	HCOP 3.3 Falls prevention	Numbers of fractured neck or femur (people over 65)	To be established				Primary Care Trust

	HCOP 3.4 Making a Positive Contribution	Numbers accessing pre-active retirement courses	To be established				
		Number of GP practices who have the 'keep improving the experience' standard which supports the end of life experience Proposed Stretch Target					Primary Care Trust
	HCOP 3.5 Better access to leisure, libraries and education for Cumbria's older and disabled people	Number of older people using libraries, leisure facilities, educational courses					Cumbria County Council
	HCOP 3.6 Affordable warmth	Take up of energy efficiency grants					
	HCOP 3.4 Better distribution of disabled facilities grant	Numbers of available disabled adapted properties supported by disabled properties register Possible Stretch Target					

Funding Stream information Healthier Communities and Older People Block

Funding streams to be pooled centrally

Funding stream	Allocation		
	07/08	08/09	09/10
Disabled Facilities Grant ? Supporting People ?			

Enabling measures for Healthier Communities and Older People Block

Agreed enabling measures	
Enabling measures under discussion and the adjustment to targets to be made should they be agreed	

BLOCK - ECONOMIC DEVELOPMENT AND ENTERPRISE							
Outcomes	Sub Outcomes	Indicators	Baselines 2006/07 (Unless otherwise indicated)	Targets 2007/08 (including stretch targets, and their annual unstretched targets)	Targets 2008/09 (including stretch targets, and their annual unstretched targets)	Targets 2009/10 (including stretch targets, and their annual unstretched targets)	Lead partner
EDE 1 Increase Employment	EDE 1.1 For those living in the wards with the worst labour market position that are also located within the districts in receipt of NRF, significantly improve their overall employment rate and reduce the difference between their employment rate and the overall	<u>Mandatory for areas in receipt of NRF</u> An improvement by 2007/8 of at least one percentage point in the overall employment rate for those living in the Local Authority wards with the worst labour market position that are also located within the Local Authority District in receipt of NRF	Barrow West Cumbria				Jobcentre Plus

	employment rate for England.	<u>Mandatory for areas in receipt of NRF</u> A reduction by 2007-8 of at least one percentage point of the difference between the overall employment rate for Great Britain and the employment rate of those living in the local authority wards with the worst labour market position that are also located within Local Authority Districts in receipt of NRF	Barrow West Cumbria					
--	------------------------------	--------------------------------------------------------------------------------------------------------------------------------------------------------------------------------------------------------------------------------------------------------------------------------------------------------------------------------------------------------------------	----------------------------	--	--	--	--	--

EDE 2 Increase Enterprise		<u>Mandatory for areas in receipt of LEGI</u> Increase in total entrepreneurial activity among the population in deprived areas - specific indicators to be agreed in negotiations	No areas in Cumbria have LEGI funding at time of submission				
EDE 3 Increased Investment		<u>Mandatory for areas in receipt of LEGI</u> Attract appropriate inward investment and franchising into deprived areas, making use of local labour resources - specific indicators to be agreed in negotiations	No area in Cumbria have LEGI funding at time of submission				

EDE 4 Increased Competition		<p><u>Mandatory for areas in receipt of LEGI</u></p> <p>Support the sustainable growth, and reduce the unnecessary failure, of locally owned businesses in deprived areas. Indicators to be agreed in negotiations</p>	No areas in Cumbria have LEGI funding at time of submission.				
EDE5 Increase Innovation		<p><u>Mandatory for areas in receipt of LEGI</u></p> <p>Increase in total entrepreneurial activity among the population in deprived areas - specific indicators to be agreed in negotiations</p>	No areas in Cumbria have LEGI funding at time of submission.				

EDE 6 Increased employment and economic activity and better paid employment opportunities.	EDE 6.1 Increase the employment rate in Cumbria (Welfare to Work Green Paper - Jan 2006 shows Government target of 80% in employment by 2020).	Increase the number of people moving from Incapacity Benefit into employment. It is proposed that this is one of the areas eligible for performance reward grant. The proposed stretch on top of the figures contained already would revolve around targeting the IB 'stock' through a specific project proposed to start in April 07.	1922	1999 (without stretch) 'Stretch' needs to be clarified.	2099 (without stretch) 'Stretch' needs to be clarified.	2199 (without stretch) 'Stretch' needs to be clarified.	Job Centre Plus
		Reduction in the number of long-term claimants of Job Seekers Allowance.	Baseline 34.7% 2005-2006	33.7%	33.2%	32.7%	Jobcentre Plus
	EDE 6.2 Support for disadvantaged groups to enter	Reduction in the number of lone parents not in employment.	4386	4342	4299	4256	Jobcentre Plus

	the workforce	<p>Reduction in the number of disadvantaged groups not in employment.</p> <p>Disadvantaged groups are:</p> <ul style="list-style-type: none"> • Refugees • People without accommodation • Ex offenders • Misusers of drugs and/or alcohol 	Not yet baselined.	Tbc	Tbc	Tbc	Jobcentre Plus
--	---------------	-------------------------------------------------------------------------------------------------------------------------------------------------------------------------------------------------------------------------------------------------------------------------------------	--------------------	-----	-----	-----	----------------

		Increase in the number of people with a disability (either physical or mental) gaining employment.	Figures not yet baselined.	Tbc	Tbc	Tbc	Jobcentre Plus
EDE 7 Improved skills to match current and future economic needs	EDE 7.1 Create a culture of lifelong learning and improve the skill levels and productivity of the Cumbrian population.	Number of adults gaining a Skills For Life qualification	Baseline 2006/07 1247 Figures based on FE adults (19+) only. Draft figures only, to be confirmed	Figures not yet agreed	Figures not yet agreed	Figures not yet agreed	Learning & Skills Council

		<p>Number of adults obtaining a first Level 2 qualification</p> <p>Or</p> <p>Proportion of eth population with Level 2 qualifications or above</p>	<p>2006/07 adults only (19+) = 1060 +352 mode 2/3 delivery. NB average level of firstness is currently 40% Draft figures only - to be confirmed</p> <p>Cumbria = 62.4% (+/- 2.9)</p> <p>Source: Labour Force Survey 2003</p>	62.6%	62.8%	63.0%	Learning & Skills Council
		<p>Increase the number of young people completing Modern Apprenticeship Frameworks</p>	<p>2005/06 completions 556</p> <p>2006/07 proposals are 1201</p> <p>Figures relate to all young people aged 16-25. Draft figures only - to be confirmed.</p>	Not yet agreed	Not yet agreed	Not yet agreed	Learning & Skills Council

		Increase the proportion of the workforce with a level 4 or higher qualification	Cumbria = 23.1% (+/- 2.5) Source: Labour Force Survey 2003	23.3%	23.5%	23.7%	
EDE 8 Increased enterprise activity throughout Cumbria	EDE 8.1 Increasing enterprise	<p>Number of new business start ups</p> <p>VAT Registrations (SBS)</p> <p>Barclays Small Business Survey</p> <p>Need to clarify our definition - what measure will we use - Barclays or VAT?</p> <p>Or</p> <p>Number of new starts assisted by CLEAN Network</p>	<p>Baseline 2004</p> <p>Cumbria = 1190</p> <p>Baseline 2004</p> <p>Cumbria = 77 per 10,000 people of working age</p> <p>433</p>	400	430	450	Furness Enterprise, CREA, WCDA, Chamber of Commerce

		Business density per 10,000 of the population	Cumbria = 348 Source VAT registered end of year stocks 2004	350	352	354	
--	--	-----------------------------------------------------	-----------------------------------------------------------------------------	-----	-----	-----	--

DRAFT

		Increase in the number of people self-employed	Cumbria = 30,600 Source: Annual Population Survey (Oct 2004 - Sept 2005)	31,100	31,600	32,100	
		Increase in the number of Social Enterprises (Downturn in figures represents lack of clarity around future funding)	CRF 6 HUB 5 FE 2 CSEP 0 Total 13	CRF 6 HUB 4 FE 2 CSEP 0 Total 12	CRF 6 HUB 0 FE 2 CSEP 0 Total 8	CRF 6 HUB 0 FE 0 CSEP 0 Total 6	CCC
	EDE 8.2 Increasing competition	Number of businesses assisted to improve their performance Need to provide a definition of 'assisted'					

EDE 9 Improved economic infrastructure	EDE 9.1 Increased number of high quality employment sites in suitable locations	Ha of serviced land available for sale or lease	Tbc	0	5	10	Cumbria County Council West Lakes Renaissance
		Ha of serviced land leased or sold	Tbc	0	0	2	Cumbria County Council West Lakes Renaissance
		Sq m of units constructed	Tbc	0	0	3000	Cumbria County Council West Lakes Renaissance

		Sq m of units taken up	Tbc	0	0	1500	Cumbria County Council West lakes Renaissance
--	--	---------------------------	-----	---	---	------	------------------------------------------------------------

DRAFT

	EDE 9.2 Land reclaimed for development	Area of land reclaimed for development (Ha)	Tbc	1.5	7	12	Cumbria County Council West Lakes Renaissance
	EDE 9.3 Improve access to the countryside through improved ease of use of public rights of way						
	EDE 9.4 Improvements to the Rights Of Way Network	Km of cycleway/footpath developed as commuter routes	Tbc	0	5	10	Cumbria County Council
		Percentage of total length of footpaths and other rights of way which were easy to use by members of the public	Cumbria = 54.0% (05/06)	59.8%	61.8%	63.8%	Cumbria County Council
	EDE 9.5 Increase in the use of Broadband in Cumbria	Percentage of businesses utilising broadband technology					
	EDE 9.6 Improved planning and housing intelligence						

EDE 10 Produce balanced housing markets	EDE 10.1 Increase affordable housing						
	EDE 10.2 Deliver Housing Market Renewal						
	EDE 10.3 Develop Home Zones						

Proposals for 'stretch targets' are being developed.

Funding Stream information Economic Development and Enterprise Block

Funding streams to be pooled centrally

Funding stream	Allocation		
	07/08	08/09	09/10

Enabling measures for Economic Development and Enterprise Block

Agreed enabling measures	
Enabling measures under discussion and the adjustment to targets to be made should they be agreed	

BLOCK - SAFER AND STRONGER COMMUNITIES							
Outcomes	Sub outcomes	Indicators	Baselines 2006/07 (Unless otherwise stated)	Targets 2007/08 (including stretch targets, and their annual unstretched targets)	Targets 2008/09 (including stretch targets, and their annual unstretched targets)	Targets 2009/10 (including stretch targets, and their annual unstretched targets)	Lead partner
SSC 1 Reduce Crime Reduce overall crime in line with local Crime and Disorder Reduction Partnership targets and narrow the gap between the worst performing wards/neighbo urhoods and other areas across the district	SSC 1.1 Reduction in volume crime and continuing low level of crime	<u>Mandatory Indicators</u> Reduction in overall British Crime Survey comparator recorded crime. Targets must be those as agreed between crime and drugs partnerships ¹ and GOs to support delivery of Home Office PSA1. A County level target will need to reflect the targets of the crime and drugs partnerships, and any aggregation will need to be agreed with the GO.	24201 (2005/06)	20259	19274	18289	CDRPs
		Mandatory Indicator Reduce the rate of adult reoffending					Probation
		Mandatory Indicator Reduce the rate of youth offending					YOS

¹ The term 'crime and drugs partnerships' refer to all local arrangement covering the roles of Crime and Disorder Partnerships (CDRPs) and Drug Action Teams (DATs). CDRPs and DATs should either be merged or have close working relationships.

		Mandatory Indicator Reduce the percentage of Prolific and Priority Offenders who reoffend Proposed Stretch target					CDRPs
		<u>Mandatory for areas in receipt of NRF</u> Reduction in overall British Crime Survey comparator recorded crime. Targets must be those as agreed between crime and drugs partnerships and GOs to support delivery of Home Office PSA1. A County level target will need to reflect the targets of the crime and drugs partnerships, and any aggregation will need to be agreed with the GO. Narrowing the gap target for Barrow. Narrowing the gap target for Allerdale. Narrowing the gap target for Copeland.					
		Reduce year on year the number of first time entrants to the Youth Justice System. Proposed Stretch target					YOS

		Increase the number of offenders brought to justice Criminal Damage					
SSC 2 Reassure the public, reducing the fear of crime	SSC 2.1 Increased feelings of safety	Increase the rate of respondents who report feeling fairly safe or very safe in their own area during the day.	96% (2005/06)	97%	98%	99%	Constabulary
		Increase the rate of respondents who report feeling fairly safe or very safe in their own area after dark.	74% (2005/06)	76%	78%	80%	Constabulary
	SSC 2.2 Reduction in fear of victimisation	Reduce the fear of being a victim of crime.					Constabulary
	SSC 2.3 Improvement in perception of the criminal justice system	Increase confidence in the Criminal Justice System.	51% (2005/06)	>52%	Not Known	Not Known	Local Criminal Justice Board
SSC3 Reduce the harm caused by illegal drugs	SSC 3.1 Tackling drug and alcohol misuse	<u>Mandatory Indicator</u> Reduce the percentage of respondents who perceive high levels of drug use and dealing in their area.	28% (2005/06)	25%	24%	23%	DAAT
		Increase the detection of Class A Drug supply offences.					Constabulary

		Increase the number of drug misusing offenders directed into treatment through the Drugs Intervention Programme.					DAAT
		Alcohol enforcement target - under development					
		Increase the proportion of those in drug treatment or leaving treatment who are a) in employment or training b) in suitable accommodation.					DAAT

DRAFT

SSC 4 Build respect and reduce anti-social behaviour		<u>Mandatory Indicator</u> (The following indicators should draw on data in the Local Government User Satisfaction Survey) Increase the percentage of people who feel informed about what is being done to tackle anti-social behaviour in their area	Tbc (2005/06)				Cumbria County Council
		<u>Mandatory Indicator</u> Increase the percentage of people who feel that parents are made to take responsibility for the behaviour of their children	Tbc (2005/06)				Cumbria County Council
		<u>Mandatory Indicator</u> Increase the percentage of people who feel that people in their area treat them with respect and consideration	Tbc (2005/06)				Cumbria County Council
		<u>Mandatory Indicator</u> Reduce peoples perception of Anti Social Behaviour	Tbc (2005/06)				Cumbria County Council

	SSC 4.2 Lower levels of Anti Social Behaviour	Reduce the number of incidents of Anti Social Behaviour	Tbc (2005/06)				Constabulary
SSC 5 Empower local people to have a greater choice and influence over local decision making and a greater role in public service delivery	SC 5.1 Empower local people to have a greater choice and influence over local decision making and a greater role in public service delivery	<u>Mandatory Indicators</u>					
		Percentage of residents who feel they can influence decisions affecting their local area	42% (05/06)				
		Percentage of people who feel that their local area is a place where people from different backgrounds get on well together.	57% (2004)				
		An increase in the number of people recorded as or reporting that they have engaged in formal volunteering on an average of at least two hours per week over the past year.		Establish baseline yr 1			
		Growth of the local voluntary and community sector.	To be established by Voluntary Sector.				

		Increase in the proportion of public services delivered by the Parish and Voluntary Sector.	To be established by CALC				
		Increase in number of communities developing or implementing community or parish plans	To be established by VAC/CCC				
		Increase in number of Quality parishes	To be established by CCC/CALC				
		Increase in the number of BME individuals who feel they have the support they require	To be established by Cumbria Multi Cultural Service.				
		Number of young people who feel engaged in democratic processes.	To be established by children & young people block.				
		Increase in the involvement of those individuals who are not engaged through formal consultation mechanisms	Establish baseline yr 1				
		Create a more cohesive community in which people from different backgrounds actively participate and get on well together	Establish baseline yr 1				

SSC 6 Improved quality of life for people in the most disadvantaged neighbourhoods; service providers more responsive to neighbourhood needs; and improved service delivery	SSC 6.1 Improved quality of life for people in the most disadvantaged neighbourhoods; service providers more responsive to neighbourhood needs; and improved service delivery	<u>Mandatory where SSCF neighbourhood element and neighbourhood management pathfinders funding is received</u>					
		Percentage of residents (in areas receiving this funding) reporting an increase in satisfaction with their neighbourhoods.	Establish baseline yr 1				
		Percentage of residents satisfied with the delivery of local services (NRF areas)	Establish baseline yr 1				
		Percentage of residents satisfied with the delivery of local services (Non NRF / Rural areas)	Establish baseline yr 1				
		Percentage of believing that service providers are more responsive to their needs (NRF areas)	Establish baseline yr 1				
		Percentage of believing that service providers are more responsive to their needs (NRF areas)	Establish baseline yr 1				
		Percentage of residents who feel that their local area is a place where people from different backgrounds can get on well together.	Establish baseline yr 1				

SSC 7 Increased domestic fire safety and reduce arson		<u>Mandatory Indicator Indicators at neighbourhood and priority group level to be agreed in negotiation</u>					
	SSC 7.1 Fewer fire related deaths	Reduce the rate of fire related deaths. Proposed Stretch target Reduce the rate of deliberate fires.	0.40 (2005/06)	0.40	0.20	0.20	Cumbria Fire & Rescue Service
	SSC 7.2 Fewer fire related injuries	Reduce the rate of fire related injuries. Proposed Stretch target	4.85 (2005/06)	6.27	5.48	4.69	Cumbria Fire & Rescue Service
	SSC 7.3 Reduce arson	Reduce the rate of primary and secondary deliberate fires	47.94 (2005/06)	38.29	37.88	37.46	Cumbria Fire & Rescue Service
SSC 8 Improved service for domestic violence victims	SSC 8.1 Greater confidence in reporting amongst victims and greater awareness of domestic violence across Cumbria	Increase the number of domestic violence incidents reported annually to the Police	4316 (2005/06)	4530	4750	5000	Constabulary
		Increase the percentage of domestic violence incidents where an arrest was made relating to the incident	27.80% (2005/06)	30%	32%	35%	Constabulary
		Increase the number of convictions for domestic violence related offences Proposed Stretch target					Crown Prosecution Service
SSC 9 Improving Road Safety	SSC 9.1 Reduce the numbers of killed and	Reduce the numbers of killed and seriously injured on Cumbria's roads					Cumbria Road Safety Partnership

	seriously injured on Cumbria roads	Reduce the numbers of killed and seriously injured on Cumbria's roads in the 16-25 age range Proposed Stretch target					
	SSC 9.2 Reduction in casualties related to disadvantaged areas	Reduce casualties relating to disadvantaged areas					Cumbria Road Safety Partnership

DRAFT

	SSC 9.3 Build respect among road users by reducing speed	Build respect among road users by reducing speed					Cumbria Road Safety Partnership
1st September 06 HLB & CK Version 3							59

LIVEABILITY							
Outcomes	Sub outcomes	Indicators	Baselines 2006/07 (Unless otherwise stated)	Targets 2007/08 (including stretch targets, and their annual unstretched targets)	Targets 2008/09 (including stretch targets, and their annual unstretched targets)	Targets 2009/10 (including stretch targets, and their annual unstretched targets)	Lead partner
SSC 10 Cleaner, greener and safer public spaces		<p><u>Mandatory where SSCF cleaner, safer, greener element is received</u></p> <p>Environmental quality, as measured by BVPI 199 and 89 in combination, which measure perceptions of cleanliness.</p>	<p><u>Copeland</u> BV199(a) 28% BV199(b) 1%</p> <p>BV89 63%</p> <p><u>Barrow</u> Information to be inserted</p>	<p><u>Copeland</u> BV199 15%</p> <p>89 N/A</p> <p><u>Barrow</u> Information to be inserted</p>	<p><u>Copeland</u> BV199 12%</p> <p>89 N/A</p> <p><u>Barrow</u> Information to be inserted</p>	<p><u>Copeland</u> To be determined</p> <p><u>Barrow</u> Information to be inserted/deter mined</p>	<p>Copeland Borough Council</p> <p>Barrow Borough Council</p>

		Quality of surroundings - increase in number of green flag award parks and green space and public satisfaction (BV119e)	Copeland Green Flags 4 + 1 Heritage BV 119e 80% <u>Barrow</u> Information to be inserted	Copeland Green Flags 5 + 1 Heritage (Stretch ** 6 + 1) BV 119e N/A <u>Barrow</u> Information to be inserted	Copeland To be determined BV 119e N/A <u>Barrow</u> Information to be inserted	Copeland To be determined BV 119e N/A <u>Barrow</u> Information to be inserted	Copeland Borough Council Barrow Borough Council
		An increase in the percentage of abandoned vehicles removed within 24 hours from the point where the local authority is legally entitled to remove the vehicle (BVPI 1218b)	Copeland 98% <u>Barrow</u> Information to be inserted	Copeland 99% <u>Barrow</u> Information to be inserted	Copeland 100% <u>Barrow</u> Information to be inserted	Copeland 100% <u>Barrow</u> Information to be inserted	Copeland Borough Council Barrow Borough Council
SSC 11 Reduced waste to landfill and increase recycling		<u>Mandatory where Waste and Performance Efficiency Grant is included</u> Reduction in the percentage of municipal waste landfilled	5.68%	1.93%	2.77%	Not known as yet	Cumbria County Council
		Increase in the percentage of municipal waste recycled	19.70%	21.83%	25.32%	Not known as yet	Cumbria County Council
		Kilograms of household waste collected per head of population BVPI 84(b)	672	685	704	Not known as yet	Cumbria County Council

SSC 12 Improve the quality of the local environment by reducing the gap in aspects of liveability between the worst wards/neighbourhoods and the district as a whole, with a particular focus on reducing levels of litter and detritus		<u>Mandatory where NRF is received</u> Reduction by 2008 in levels of litter and detritus using BV199 at district level					
--------------------------------------------------------------------------------------------------------------------------------------------------------------------------------------------------------------------------------------------	--	--------------------------------------------------------------------------------------------------------------------------------	--	--	--	--	--

<p>SSC 13 As part of an overall housing strategy for the district, improve housing conditions within the most deprived neighbourhoods/wards, with a particular focus on ensuring that all social housing is made decent by 2010</p>		<p><u>Mandatory Indicators where NRF is received</u></p> <p>The two year combined sample (2005/6 to 2006/7) from the continuous English Household Condition Survey (EHCS) reporting in 2007 confirms that the reduction in the number of non-decent social sector dwellings is more than 50% of the total reduction in the number of non-decent social sector dwellings since 2001.</p>					
		<p>The two year combined sample (2007/8 to 2008/9) from the continuous EHCS reporting in 2009 confirms that the reduction in the number of non-decent social sector dwellings is more than 50% of the total reduction in the number of non-decent social sector dwellings since 2001.</p>					

SSC 14 Improve condition of roads and structures	SSC 14.1 Reduction in roads requiring maintenance						
	SSC 14.2 Reduction of footways requiring maintenance						
SSC 15 Reduce the impact of waste on the environment	SSC 15.1 Increase waste being recycled and composted	Recycling 19.70% Composting 15.42%	<u>Recycling</u> 21.83% <u>Composting</u> 18.77%	<u>Recycling</u> 25.32% <u>Composting</u> 22.46%	<u>Recycling</u> Not known as yet <u>Composting</u> Not known as yet	<u>Recycling</u> Not known as yet <u>Composting</u> Not known as yet	Cumbria County Council
SSC 16 Create decent homes	SSC 16.1 Increase homes achieving the Decent Homes Standards						
	SSC 16.2 Reduce number of empty properties						
	SSC 16.3 Housing the homeless						

Proposals for 'stretch' targets are being developed.

Funding Stream information Safer and Stronger Communities Block

Funding streams to be pooled centrally

Funding stream	Allocation		
Safer Theme Anti-Social Behaviour	07/08	08/09	09/10
Aggregates Levy Sustainability Fund			
Home Fire Risk Check Initiative			
Stronger Theme Neighbourhood Element			
Liveability Theme Cleaner, Safer, Greener Element			
Waste Performance and Efficiency Grant	06/07 £277,247K Capital £277,247K Revenue		
	07/08 Not known		

Enabling measures

Agreed enabling measures	
Enabling measures under discussion and the adjustment to targets to be made should they be agreed	

Appendix 2: Stretch Targets (template included - targets in development)

REWARD ELEMENT TEMPLATE (GONW)

Reward Element - Target [insert target number]

This would be from authorities' internal numbering system, should you choose to adopt one

[Insert target heading]

In LAA terms, this equates to the overarching theme (e.g. reducing hospital admissions, improving road safety)

Indicator by which performance will be measured

[Insert indicator description, including data source]

Current performance ([insert period of measurement])

[Insert current performance figures]

This is the "baseline", and should be based on the latest audited figures

Performance at the end of the period of the Local Area Agreement ([insert period of measurement])

Performance expected without the Reward Element

[Insert "without reward" figure]

This will be the figure for this indicator at the end of the LAA period, as previously declared in any national or local plan, e.g. a national PSA, or a local corporate plan, delivery plan or business plan

Performance target with the Reward Element

[Insert "with reward" figure]

This is the higher figure areas expect to have achieved for this indicator by the end of the LAA as a result of pump-priming, new ways of working, focussed resources etc.

Enhancement in performance with the Reward Element

[Insert stretch figure]

This is the difference between the "with reward" figure and the "without reward", i.e. the extra performance you are undertaking to deliver, over and above what you would have done anyway

Allocation of Performance Reward Grant

[Insert indication of how much PRG is to be proportioned to this target and between indicators if appropriate]

Notes

[Insert any necessary notes or clarification relating to this target]

Appendix 3: Enabling Measures - business cases (template included)

ENABLING MEASURE REQUEST TEMPLATE (GONW)

Title of Enabling Measure Request:
LAA area:

LA Contact officer details	GO Contact officer details	Government Department contact submitted to
Name:	Name:	Name:
Telephone:	Telephone:	Telephone:
Email:	Email:	Email:

LAA Block F&F request relates to: (please delete as appropriate)
CYP / SSC / HCOP / EDE or Applies to all

LAA outcome(s) request relates to:

Description in full of the Enabling Measure request:

What is the constraint to achieving this outcome that the Enabling Measure would overcome? How would it do this? What are the implications of not agreeing the request?

If the request cannot be agreed what other options may be available to resolve the issue?

Government Department response to the request:

Appendix 4: Statement of Community Involvement

(text in development and for comment)

1. Introduction

Local Area Agreements (LAAs) aim to address the issues that matter most to local people, and to develop solutions through simplified use of funding streams, greater flexibility to meet local needs and improved joint working between local councils, government departments and local partners. They are also intended to enable local people to have an increased level of influence over local decision-making.

2. Principles and processes by which residents are involved in identifying local priorities for the Agreement

One of the key purposes of the Cumbria Agreement is to improve the links between services and improve their responsiveness to local people. Cumbria already has a range of agreements which underpin this working. An approach is needed whereby Councils, partners and local communities work effectively together along a path of continuous improvement in ways that are coherent, consistent and coordinated.

This type of approach ensures that service providers, communities and community groups are looking ahead together, building resources into services that are relevant to changing local needs. Community Engagement is often loosely used to describe a number of activities such as: Sharing information; Asking for views; Informing communities of decisions; Working locally to solve social problems; Seeking local approval; and Asking communities to provide services.

Rather than a list of activities it is more helpful to describe the process.

Community Engagement is an *ongoing relationship* that involves direct interaction with local people and organisations. Cumbria has already introduced a range of measures as part of an overall 'Local Matters' programme to improve the way we communicate with and involve local people. These measures include:

- a network of 62 neighbourhood forums with multi-agency engagement and referral systems
- area support teams to support these arrangements and district based partnerships;
- involving councillors and staff from many organisations in district-based local strategic partnerships and the Cumbria Strategic Partnership;
- the Community Voice citizens' panel;
- improved information access through websites; and
- a Cumbria-wide multicultural service.

Most of these initiatives are multi-agency. We will build on these over the next four years and will also be working on other key strategic initiatives

- national developments such as the new government focus on neighbourhoods and the Every Child Matters agenda;
- implementing Cumbria Democracy Commission's recommendations - developing local working through local committees so that locally elected councillors can take decisions, influence services and monitor performance locally;
- focusing on groups that are traditionally 'hard to reach' or disadvantaged including re-energising the Cumbria Rural Forum and developing outreach multicultural services; and
- strengthening relationships with Cumbria's town and parish councils - which provide the most 'intimate' tier of local government and a vital element in the structure of local democracy;
- developing the concept of a 'community gateway' as an approach to support multi-agency community engagement.

3. Description of the processes by which the communities of place are involved in the Agreement

Community engagement will build on existing networks and arrangements including:

- a. Cumbria Strategic Partnership and its thematic partnerships
- b. Local Strategic Partnerships and their networks
- c. Neighbourhood Forums and associated multi-agency neighbourhood development work
- d. Parish councils through CALC district committee meetings

4. Description of the processes by which the voluntary and community sector are involved in the Agreement

Community and Voluntary sector groups vary widely in both structure and activity. These groups are increasingly known as the 'third sector' and include voluntary and community organisations, charities, social enterprises, cooperatives and mutuals. Religious organisations that are involved in community work are also considered part of the third sector. Residents and tenants organisations usually aim to mobilise individual residents around local issues, such as housing, crime or community safety, over small geographical areas. Some groups have no formal constitution or management arrangements and rely solely on volunteers to provide locally-based community activities, others may operate on a more formal footing.

Voluntary organisations may similarly be small and informal but many are formally constituted and have paid staff working alongside volunteers. Some provide services to local residents, such as advice agencies; others may offer support for community activity such as running a community centre. Voluntary organisations may operate in a specific geographical area or across a town or county, and may be part of a wider national body.

Faith groups and charitable organisations represent another dimension to the sector with their own varied structures and processes. The revised version of a Compact

- reflecting the growing importance of the third sector and the need for improved cooperation across sectors - is currently subject to extensive consultation with Third Sector organisations. Through the CSP a number of other public sector organisations are being encouraged to sign up to the Compact.

The process for engagement will include:

- Regular information/bulletins about the development of the process (produced by the CSP)
- Representation of the Third sector on the CSP
- Regular reporting/liason to a Third Sector infrastructure body(through either Cumbria Association of Council's for Voluntary Service or the developing Cumbria Infrastructure Forum) on progress with the Agreement, developing opportunities for engagement and opportunities for Third Sector service delivery
- Accountability to the wider sector through conference/workshop events of the Cumbria Voluntary Sector Forum (to be established by CACVS), twice a year.
- Identification of link officers between the Third Sector and the Cumbria Agreement Thematic Partnerships (who drive the delivery of targets); these officers will help to support the sector in engaging in the LAA process.
- Identification of individuals who could be of particular value to thematic partnerships in the development of the Cumbria Agreement with the aim of at least one Third Sector representative on each Thematic Partnership

Existing engagement opportunities are amplified in Appendix 1.

5. How the voluntary sector will benefit from and contribute to the Cumbria Agreement outcomes

LAAs are part of the double devolution of power from central government to local government, and from local government to citizens and communities. This opens up significant opportunities for the VCS, as it aims to put more power into the hands of local people and voluntary organisations. Initiatives such as Together We Can and Active Learning for Active Citizenship have already been put in place to help to improve the capacity of individuals and communities to develop as active and engaged citizens.

There is a strong commitment to building understanding and working relationships between the statutory sector and the VCS. Particularly over the last three months a significant amount of work has been undertaken to ensure that voluntary and community organisations feature prominently in ongoing implementation and delivery and that stronger communities issues are addressed. Consultation strongly supports the need to strengthen the relationships between the CSP, LAA and the VCS. The VCS role is vital to help the partnership to more effectively:

- Communicate and engage with voluntary groups and act upon their ideas
- Build social capital and cohesion
- Realise and utilise the knowledge and experience of local organisations
- Value the contribution and potential of community level activities
- Promote diversity, equality and inclusion

- Deliver public services

To date the VCS have been involved in the development of Agreement governance arrangements and will be represented at all levels, including the CSP Executive Board and Thematic Partnerships.

6. The links to the strategy for community engagement and voluntary capacity building and infrastructure

The voluntary sector is already involved in a wide range of community engagement activity associated with Community Strategies and Service Planning; both wide area strategic documents and more local parish level plans. To help coordinate engagement a community gateway is being proposed, engaging different agencies and sectors. Strengthening the sector to develop its capacity and deliver public services is a key issue for the Agreement.

To support this engagement a Cumbria Voluntary Sector Infrastructure Forum has been supported by GONW as part of the ChangeUp process. The Forum facilitates current engagement with CSP and the Cumbria Agreement's thematic partnerships. The focus of this work is closely aligned with embedded within the "ChangeUp" initiative focused on improving the capacity, performance, efficiency and accessibility of voluntary sector infrastructure services to voluntary and community organisations providing front line services. The priority areas for infrastructure development (and inter alia supporting agreement are: Performance Improvement; Developing a highly effective workforce; ICT; Governance; Recruiting and developing volunteers; and Financing voluntary and community sector activity.

7. How has the VCS been involved in monitoring Cumbria Agreement activities

In developing the Agreement a considerable amount of consultation has been undertaken. This has included:

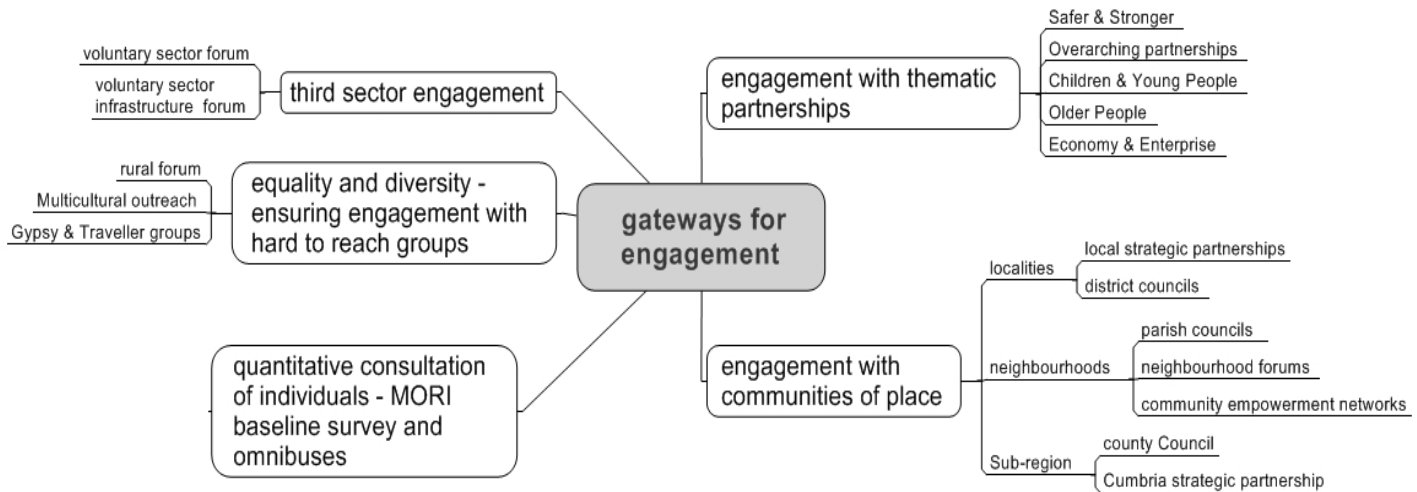
- Development of thematic partnerships containing a number of community and voluntary sector partners
- Co-option of representatives from existing local and strategic partnerships onto these thematic partnerships
- Engagement with key VCS provider organisations (eg Age Concern)
- Presentations to and detailed discussions with local strategic partnerships;
- Information and consultation events with local partners and VCS organisations using LSP mailing lists and additional contacts developed through thematic partnerships

8. How the VCS will be involved in governance of the Cumbria Agreement

The CSP is seeking a Representative from the Sector on its Executive Board. Link officers have been identified to support Third Sector engagement in the Agreement. Additionally Third Sector representatives are being identified on each of the Thematic Partnerships.

Developing Co-ordinated Community Gateways

During the development of the Agreement a number of participants commented both on the many opportunities to engage and the dangers of 'overkill' when these opportunities were not co-ordinated. To secure better alignment and coordination of engagement activities, during the first year of the Agreement it is envisaged that these 'community gateways' are coordinated through a 'gateway steering group'. Through this group the different communities of interest and place illustrated in the diagram will be engaged.



Pathfinder - Third Sector Forum

As a step towards realising the full potential of the third sector, the 2005 Pre-Budget Report announced that the Government would develop local area pathfinders, working across departments and with key national partners to identify local authorities who will commit to the full implementation of the Compact funding principles and explore ways in which the sector can add value to the delivery of local services. Cumbria County Council was one of the local authorities selected to support this work. This project has allowed the Council to share practices with other leading authorities and government agencies and identify areas where there is scope for further improvement. A Pathfinder Action Plan is being developed to learn from this experience and to support development of the VCS capacity in Cumbria. One of these actions includes the development of a Cumbria Voluntary Sector Forum, as part of the County Council's Service Level Agreement with CACVS

Appendix 5: Partnership working and Governance arrangements *(text in development)*

DRAFT

Appendix 6: Performance Management Framework

(text in development)

- Information will be provided here about the programme of work for the next few months that will result in a performance management framework.
- Proposals about the following will be required in the draft:
 - How data gets collected
 - Who receives reports
 - Who is accountable
 - Arrangements for taking corrective action - “ladder of intervention”
- A workshop took place on 24th August to start the thinking on this. Three task and finish groups have been established (comprising various partner organisations) that will consider the following:
 - Accountability
 - Financial Matters
 - Performance Management
- The output from these groups should provide a propose PMF for further consideration and development.

Appendix 7: Key funding streams aimed at “narrowing the gap”

(table in development)

DRAFT

Appendix 8: Neighbourhood Renewal outcomes and targets

(table in development)

DRAFT

Appendix 9: List of Partners

(in development)

DRAFT

Appendix 10: Sustainability Impact Assessment Methodology *(to be inserted)*

DRAFT

Appendix 11: Equity Screening *(to be inserted)*

DRAFT

DRAFT

MEMORANDUM



County Council
The Courts, CARLISLE
Cumbria, CA3 8NA

DATE 28 July 2006
Your Ref:
Our Ref: HB/LAA/Corres/CEs&Chairs
Ext No: 6687

From: Anthony Gardner, Director of Strategy & Performance

To: District Chief Executives
Chairs of Local Strategic Partnerships

Cc: Sue Stevenson, Policy – Strategic Partnership
Chairs of Thematic Partnerships
Lead Officers
LSP Co-ordinators

LOCAL AREA AGREEMENT

In response to various comments about the length of time there is for partners to consider the initial draft of the LAA, the period for feedback has been extended.

A skeleton draft will be put on the CSP website on 4th August 06. This will be the most up to date outcome, sub- outcome and target information read officers of the Thematic Partnerships can provide on that day. Further refined versions of this document will be posted on the website on 18th August and 1st September. The 1st September version will be used to provide the main body of a paper to the CSP Executive on 6th September.

General feedback on the evolving content of the LAA from you organisation will need to be with Helen Blake, Programme Manager for the LAA no later than 27th September. Specifically I am also seeking you executives endorsement of the draft agreement by 26th September (or exceptionally by 28th September if your executive is meeting on 27th or 28th September)

It would be extremely helpful if you now let me know:

1. The date that your executive is meeting to consider the draft. I believe the most appropriate date is noted on the table below. I would be grateful if you could confirm this with me.
2. The outcome of that meeting in writing



Director of Strategy and Performance – Anthony Gardner

Organisation	Executive Meeting Date
Furness LSP	8 th September
South Lakes LSP	9 th August
Carlisle LSP	1 st August
Eden LSP	5 th September
West Cumbria LSP	19 th September
Copeland Borough Council	15 th August
Allerdale Borough Council	30 th August
South Lakeland District Council	16 th August
Carlisle City Council	29 th August
Barrow Borough Council	2 nd August

The draft LAA will then submitted to GONW on 29th September

The document will then continue to change as we enter the negotiation phase which will run until the beginning of December. GONW advisors will be speaking to Government departments about our proposals and feeding back any changes government wishes to see. It is hoped that the majority of discussion will be around stretch targets; which (whilst these are an important element of the LAA) will not make up a large percentage of the content. We may not therefore see significant changes to a large part of the agreement.

An amended agreement will go to GONW at the beginning of December. Again, partners may wish to provide feedback on the content at this point. I know you appreciate that the LAA will be a "live" document quite possibly up until ministerial sign off in February. This makes it extremely difficult to provide you with a date when the definitive version of the LAA will be available to you to take to executive meetings. However I anticipate that the County Council Cabinet on 9th January 2007 will recommend to County Council on 18th January that the agreement be approved. Again we will need to ensure that your executives have approved the final draft by the end of December.

I will ensure that we make updated versions of the document available on the CSP website as far as practicable. You can also contact Helen if you have a query about content who will sign post you accordingly.

Anthony Gardner

ANTHONY GARDNER
CORPORATE DIRECTOR STRATEGY AND PERFORMANCE

Contact Details:

Helen Blake, LAA Programme Manager
 Policy and Performance
 Cumbria County Council
 01228 606687
 helen.blake:cumbriacc.gov.uk



Director of Strategy and Performance – Anthony Gardner

Appendix Three

Children & Young People's Block

The following is useful background:

1. This is the first substantive contribution to the LAA by this thematic partnership.
2. Broadly the entries are as one would expect, but have a bias toward school performance (Exam result improvement) which though predictable is disappointing.
3. The Carlisle Children and Young People's Priority Group has identified its priority issues as follows (Extracts from minutes etc)

Review of Highest Impact Priorities

Housing for young people.

Negative peer pressure (Bullying) restricting YP participation in Positive Activities.

In addition the following have received attention at the meetings:

- * Promote positive view of young people.
- * Reduce under 18 conceptions
- * Need to be clear to service everyone - Race & Diversity
- * Produce positive pictures of young people instead of demonising them

The LAA section should be evaluated in terms of its reflection of the Carlisle priorities.
NB:

CYP 1.1 – Schools in District achieving “Healthy” classification. (Suggest, that this be applied to all districts, not just deprived areas) This would enable Carlisle LSP to participate in this potential stretch target (If deprived its West Cumb and Barrow only).

CYP 1.2 – An important area of interest for Carlisle. The figures need to be checked as the Carlisle figure is lower than 31/1000 at 53.2 in 01/03 which would be 26.6 year on year only just more than the 07/08 target.

CYP 2.1 & 2.2 – As with 1.1 Its of concern that here is a potential stretch target restricted to NRF areas.

CYP 3.2 – A Carlisle Priority.

CYP 5.1 – It would be useful to see some data and indicators measuring/addressing bullying outside the school environment.

Overall Comment:

The working relationships between LSP/CSP Children and Young Peoples Groups and Statutory (Children's Act 2004) groups remains to be clarified particularly regarding child protection and the LAA.

The Carlisle Group will put together a "Project Brief" (1Page A4) in each of the priority areas (Housing & Bullying) lest the opportunity arise for "bidding" at the County group. It is vital that lines in the LAA reflect Carlisle Young Peoples housing needs and help with bullying/negative peer pressure issue. Partners will develop evidence of need including accommodation for children on remand or foster accommodation in Carlisle.

The public perception of Young People needs to be controlled. The group is examining the possibility of contacts with local media to declare the group's interest in the type of coverage YP are getting in Carlisle. A small project monitoring and reporting press coverage will be developed in outline.

Economic Development & Enterprise Block

Summary of progress:

Work has continued to develop the Economic Development & Enterprise Block of the LAA and we remain on track to have a robust draft to submit to Government Office North West on 29th September for comment.

The Outcomes Framework has been developed following the meetings of the Thematic Sub-Groups that took place around the four priority areas identified by CEDOG; Employment, Economic Infrastructure, Enterprise and Skills. Consideration has also been given to comments received from partners as well as guidance and feedback from colleagues at GONW.

The production of the Cumbria Sub Regional Economic Action Plan has been undertaken in parallel to the development of the LAA and work was undertaken to ensure that the two documents are entirely complimentary of each other.

As can be seen from Version 2, there is still considerable work to be undertaken on the Outcomes Framework. In particular:

- A number of measures still have no baseline information or targets set against them.
- There are a number of measures that it is recommended are removed from the framework – primarily due to data collection issues.
- There is only one measure where work has been undertaken to identify it as an area for 'stretch' and eligible for the reward element.

If CEDOG recommends that there are other priority areas that we wish to be considered as a target with Performance Reward attached to them, these will need further development as soon as possible in order to feed in to the first draft to GONW.

Partners still need to give regular consideration to whether the outcomes and measures thus far included are appropriate to address the needs of Cumbria. We will be expected to produce a robust rationale to justify the inclusion of the outcomes we have suggested during our negotiations with GONW.

Next steps:

- **In conjunction with the Chamber of Commerce, we will be running four business engagement events (in Carlisle, Kendal, West Cumbria and Barrow) around the LAA and the Sub Regional Economic Action Plan to gather the views of the private sector. It is likely that these will take place w/c 18th September in order to ensure that comments can be considered in advance of the submission to GONW.**
- Work will be undertaken to identify the most appropriate method for properly engaging the Voluntary and the Community sectors in the development of the Block.
- Cumbria County Council Cabinet will consider in September the process for managing the Performance Reward Grant that will be attached to stretch targets. Further information will be provided at the September CEDOG meeting.
- Work will need to be undertaken in advance of the first GONW submission, to identify the relevant funding streams from partner organisations that will contribute to the delivery of the outcomes identified.

Key dates:

24 th August 2006	LAA content considered by Cumbria Vision Strategy Sub Group LAA Performance Management workshop
------------------------------	----------------------------------------------------------------------------------------------------

The Draft (extract)

Economic Development and Enterprise

Cumbria - A county of contrasts and challenges

Cumbria faces a number of challenges to improve both economic and social conditions in the County. Steps have been taken over the past 5 years, however, to help create the right environment to increase investment and economic growth. These include the creation of urban and rural regeneration companies and ensuring a full recognition by Government of the need for concerted action to deal with the restructuring of the nuclear industry in West Cumbria. Inroads have been made but much remains to be done and the development of Cumbria's Local Area Agreement provides an opportunity for an extension to the strong partnership working that is undertaken to secure Cumbria's economic revival.

Cumbria has been described as a County of contrasts (Sustainable Cumbria 2004-2024) and this is well demonstrated in the juxtaposition of outstanding landscape, at the heart of which is the Lake District National Park, alongside areas of major manufacturing and the nuclear facility of Sellafield. This contrast further applies to its economy. Within its boundaries, there are some local areas that are amongst the most deprived in the UK alongside others where incomes are above average. Some places exhibit high levels of unemployment while others have strikingly low numbers of unemployed. The overall picture is, however, of a county that is now the worst performing sub-region of the UK in terms of Gross Value Added. Across Cumbria there are many families that survive on very low incomes and in the industrial communities in Furness and West Cumbria worklessness and hidden unemployment are markedly severe.

It is on this canvas that major and lasting change must be achieved. It will not be easily delivered and the trends of the last ten years, which have seen the economy of the County deteriorate sharply relative to the rest of the country, will need to be arrested.

Job losses and closures have affected the manufacturing sector in particular where levels of GVA per worker are relatively high. There has been employment growth in other activities between 1999 and 2003 but new jobs have tended to be in low GVA sectors.

The most prominent growth has occurred in retailing, hotels, restaurants and public sector services. The succession of closures in of businesses in the manufacturing sector, however, means that industrial employment in West Cumbria and Furness is even more dependent on the nuclear sector than five years ago and employment in financial and business services remains under-represented. In short, there has been insufficient strength elsewhere in the economy to compensate for the continued losses in manufacturing industry and hence the continuing and dramatic decline in the relative wealth.

There are 24 specific localities (super output areas) that are in the ten percent most deprived areas and within that category 7 areas are in the worst 3% across the whole of England and Wales. Deprivation is also a feature of rural areas but, with the exception of poor access to services and transport difficulties, the scale of the problem is often masked by statistical averages. Rural deprivation tends to focus at the level of individual households that depend on low wage employment and experience long hours associated with multi-jobbing.

Recent surveys continue to show the concerns of employers about basic skill levels in the labour market and difficulties in recruiting staff in specialist fields such as engineering and other appropriate technical qualifications. There is a reported weakness too in the value adding sectors in financial and professional services.

LAA Version 3 dated 01/09/06 Additions:

1. Some renumbering of Outcomes and sub outcomes.
2. Addition of Sub outcome 6.2 Disadvantage groups unemployment.

ECONOMIC DEVELOPMENT & ENTERPRISE BLOCK						
Mandatory outcomes	Mandatory Indicators	Baselines 2006/07 (Unless otherwise stated)	Targets 2007/08 (including stretch targets, and their annual unstretched targets)	Targets 2008/09 (including stretch targets, and their annual unstretched targets)	Targets 2009/10 (including stretch targets, and their annual unstretched targets)	Lead partner
EDE1 Increase Employment . Various Related to NRF (Neighbourhood Renewal Funding) areas	Various Related to NRF Funded areas Barrow & West Cumbria only			NRF Funding unconfirmed after 07/08		
LEGI (Local Enterprise Growth Initiative) areas only EDE 2 Increase Enterprise EDE 3 Increased Investment EDE 4 Increased Competition EDE 5 Increase Innovation	Various Related to LEGI Funded areas. No areas in Cumbria have LEGI funding at time of submission					

ECONOMIC DEVELOPMENT & ENTERPRISE BLOCK

Non Mandatory outcomes	Non Mandatory Indicators	Baselines 2006/07 (Unless otherwise stated)	Targets 2007/08 (including stretch targets, and their annual unstretched targets)	Targets 2008/09 (including stretch targets, and their annual unstretched targets)	Targets 2009/10 (including stretch targets, and their annual unstretched targets)	Lead partner
ED&E Priority 6: Increased employment and economic activity and better paid employment opportunities.						
(i) Increase the employment rate in Cumbria (Welfare to Work Green Paper – Jan 2006 shows Government target of 80% in employment by 2020).	<p>(a) Increase the number of people moving from Incapacity Benefit into employment.</p> <p>It is proposed that this is one of the areas eligible for performance reward grant. The proposed stretch on top of the figures contained already would revolve around targeting the IB 'stock' through a specific project proposed to start in April 07.</p>	1922	1999 (without stretch) 'Stretch' needs to be clarified.	2099 (without stretch) 'Stretch' needs to be clarified.	2199 (without stretch) 'Stretch' needs to be clarified.	Job Centre Plus
ED&E Priority 7: Improved skills to match current and future economic needs.						
ED&E Priority 8: Increased enterprise activity throughout Cumbria.						
ED&E Priority 9: Improved economic infrastructure.						

Safer Stronger Communities Block

The SSC draft was presented to colleagues, partners and GONW on 15 August. There was some concern over (stronger) area for stretch (see last page "Empower"). As a result this target has been withdrawn. There are several strong supporters of the re-inclusion of this target in the District LSPs.

The TP have prioritised their areas for proposed stretch and these are as follows:

1. Reduction in prolific and priority offending
2. Increase reporting and convictions relating to domestic violence
3. Reduction in fire related deaths and injuries
4. Reduction in first time entrants into criminal justice system

These are all worthy and practical issues, which are highly deliverable and measurable.

Bearing in mind that there are only to be 12 stretch targets across the piece, these will be prioritised further as the process continues, 2 or 3 going forward.

LAA Version 3 dated 01/09/06 Additions:

I'm reasonably confident that theses reflect the Carlisle Priorities.

Bear in mind the CDRP has been fully involved and is a relatively "mature" institution.

104

[illegible]

Domestic Violence Specific proposal to be worked up	A true partnership issue linking to ASB, Violent Crime, RESPECT, Housing, Youth Offending etc. Good quality data following LPSA work. A robust partnership arrangement with momentum is in place	Would need to consider the targets carefully to avoid conflicting aims (e.g. encouraging reporting will also increase repeat incidents)	Low
Violent Crime	Working from a positive baseline	Need clarity on which category to focus on	Med
Criminal Damage	Signal crime which adversely affects the community	Numbers are likely to increase with the advent of 101 the single non emergency number. Reductions very unlikely in short to medium term	High
Prolific and Other Priority Offenders Reduce the percentage of PPOs who reoffend	Mechanisms in place county wide to address PPOs which are likely to improve. Much evidence of strong partnership	Measurement processes could be more robust. Current PPO review highlights some areas for	Med

	working to achieve success	improvement within PPO strategy	
Reduce First Time Entrants to the Youth Justice System	Good links to Prevent and Deter element of PO strategy. Already measured. Data reliable.	No clear argument for exclusion	Low
Reduce Fire Related Deaths and Injuries	Clear and approved quantifiable cost benefit. Supportive baseline. Infrastructure would support stretch of performance. Link to HCOP block.	No clear argument for exclusion	Low

<i>Proposed area for stretch:</i>						
<i>Empower local people to have a greater influence over local decision making</i>	<i>Increase in the number of activities which enhance participation</i>	<i>Quality of Life Survey?</i> <i>Measure of current activities</i> <i>Annual report to neighbourhood forum areas detailing NF activity, issues raised and resolutions, relating to public</i>				

Healthy Communities and Older People

Text Summary of Proposed Outcomes:

1. Improved health and reduced health inequalities
 - 1.1 To lessen the harm to health from alcohol consumption for Cumbria people.
 - 1.2 To improve mental health and wellbeing for the people of Cumbria.
 - 1.3 To improve the health of people with a learning disability.
2. Reduce premature mortality rates and reduce inequalities
 - 2.1 To reduce the prevalence of smoking across Cumbria.
 - 2.2 To combat the rise in obesity in Cumbria
3. Independence, Wellbeing and Choice
 - 3.1 To increase support available to help people live independently
 - 3.2 To improve the quality of life for older and disabled people in Cumbria.
 - 3.3 To promote better access to leisure, libraries and education for Cumbria's older and disabled people.

For each of these outcomes, we have identified indicators to measure progress, and are currently working on baseline data. This can be found within the attached document.

These outcomes have been chosen because they:

- * Have the potential for improvement through partnership working - i.e. partnership working can 'add value' to these areas.
(NB - areas where Cumbria has already got established well functioning partnerships, e.g. Drugs and Supporting People have therefore not been identified as a priority for the LAA)
- * Are important issues that can make a difference to the health of people in Cumbria
- * Meet the requirements of key government targets
- * Are measurable
- * Have been identified as priorities in different localities
- * Are important to us in Cumbria
- * Are seen as deliverable targets
- * Are areas in which we can make a difference over the next 3 years

It is recognised that these are not the only important issues, but have been chosen to be taken forward at this stage for the reasons set out below.

CARLISLE LSP specific notes:

1. Carlisle is I believe a Spearhead Area.

2. The Chair of Carlisle LSP HC & OP Group Reports:

In terms of emerging themes, the County-wide discussions have led us to highlight the potential of:

a. For health, smoking cessation and more active lifestyles

b. For older people, improved access to information and advice, especially in more rural areas, plus measures to increase incomes. These are by no means exclusive but are areas that, even at this relatively early stage, appear to merit further exploration and development.

3. There appears to be no conflict between LAA content and Carlisle LSP intentions and there is a strong likelihood that local activities will contribute towards the achievement of the "Stretch Target" of Adult Smoking reduction (HCOP 1 Page 25). In addition HCOP 3 (page 27) offers an opportunity to address priority b above via Information advice and guidance in GP practices.

LAA Version 3 dated 01/09/06 Additions:

Outcomes and Sub-outcomes are re numbered.

HCOP 1.7 Now has more detail regarding a Carlisle Priority "Stop Smoking" and is proposed for "stretch".

HCOP 3.1 & HCOP 3.4 will play into Carlisle Priority "Better IAG" and are proposed for "stretch".

Overall ... Content that LAA reflects Carlisle Priorities adequately.