

# Report to Executive

Agenda  
Item:  
  
**A.2**

Meeting Date: 10th March 2014  
Portfolio: Communities and Housing  
Key Decision: Yes: Recorded in the Notice Ref:KD  
Within Policy and  
Budget Framework YES  
Public / Private Public

Title: CARLISLE AND EDEN COMMUNITY SAFETY PARTNERSHIP  
ANNUAL PLAN 2014/15  
Report of: The Deputy Chief Executive  
Report Number: SD 02/14

## Purpose / Summary:

The Carlisle and Eden Community Safety Partnership (CSP) have developed their Draft Partnership Plan for 2014/15 (Appendix 1) using data from the Community Safety Strategic Assessment (Appendix 2.) The plan has been developed by the CSP's Leadership Group with input from City Council Officers and the Portfolio Holder for Communities and Housing.

The purpose of this report is to present the CSP's work programme for the coming year in the form of their Partnership Plan. While this is presented as a developed document it represents a 'live' work programme - which develops throughout the year and can be influenced and shaped through the City Council's representation on the CSP's Leadership Group.

## Recommendations:

It is recommended that Executive consider and note the report and recommend it for wider consultation.

## Tracking

Executive:	<b>7<sup>th</sup> April 2014</b>
Overview and Scrutiny:	<b>27<sup>th</sup> March 2014</b>
Council:	<b>29<sup>th</sup> April 2014</b>

## **1. BACKGROUND**

- 1.1** The Crime & Disorder Act 1998 placed statutory obligations on local authorities and the police to act in co-operation with the probation service, health authorities and other relevant agencies, and to work together to develop and implement a partnership plan for tackling crime and disorder in their area.

The legislation requires local Community Safety Partnerships to produce a plan setting out how it intends to tackle crime and disorder and allowing the development of strategies to tackle short, medium and long-term priorities.

The attached plan outlines these priorities for 2014-15 and is supported by a series of actions plans being developed and delivered by the task groups of the CSP.

## **2. PROPOSALS**

- 2.1** It is proposed that the CSP Partnership Plan is considered by Executive and after consultation approved by full Council.

## **3. CONSULTATION**

- 3.1** The Partnership Plan has already been circulated to all individual partners within the Carlisle and Eden Community Safety Partnership's and considered by their Leadership Group. Views and comments received from Community Overview and Scrutiny panel (on 27<sup>th</sup> March 2014) will be brought forward for consideration by executive in due course.

## **4. CONCLUSION AND REASONS FOR RECOMMENDATIONS**

- 4.1** It is recommended that Executive consider and note the report and recommend it for wider consultation.

## **5. CONTRIBUTION TO THE CARLISLE PLAN PRIORITIES**

- 5.1** "We will work more effectively with partners to achieve the City Council's priorities".

**Contact Officer:**            **Darren Crossley**

**Ext:**    **7004**

### **Appendices**

#### **attached to report:**

Appendix 1 CSP Draft Partnership Plan

Appendix 2 Strategic Assessment Technical Report

**Note: in compliance with section 100d of the Local Government (Access to Information) Act 1985 the report has been prepared in part from the following papers:**

**CORPORATE IMPLICATIONS/RISKS:**

**Chief Executive's -**

**Deputy Chief Executive –**

**Economic Development –**

**Governance –** The CSP Partnership Plan contributes towards the Council's obligations under the Crime & Disorder Act 1998.

**Local Environment –**

**Resources -** There are no financial implications of adopting the CSP Partnership Plan for 2014/15. The City Council makes no direct financial contribution to the partnership and therefore any additional support required will need to be met from existing base budgets.

# Carlisle and Eden Community Safety Partnership Plan 2014-2015



## Vision

By working in partnership, North Cumbria communities will remain safe and reassured

## Key Priorities 2014

- **Anti-social behaviour**
- **Violent Crime**
- **Domestic Abuse and Sexual Violence**
- **Alcohol and Drug Misuse**
- **Hate Crime**
- **Reduce Re-offending**

## Tackling the Priorities

### Anti-Social Behaviour

- Maintain low levels of anti-social behaviour.
- Improving the partnership approach to co-ordinating activities for young people.
- Joining up the partnership approach for environmental aspects.

### Violent Crime

- Work with partners to reduce violent crime and assaults.

### Domestic Abuse and Sexual Violence

- Actively support the County wide work on Domestic Violence and DV Champions.
- Improve the management of repeat missing vulnerable young people to reduce exploitation.

### Alcohol and Drug Misuse

- Support, develop and deliver the County wide Alcohol Strategy to reduce alcohol misuse within the partnership area
- Reduce harm caused by drugs.

### Hate Crime

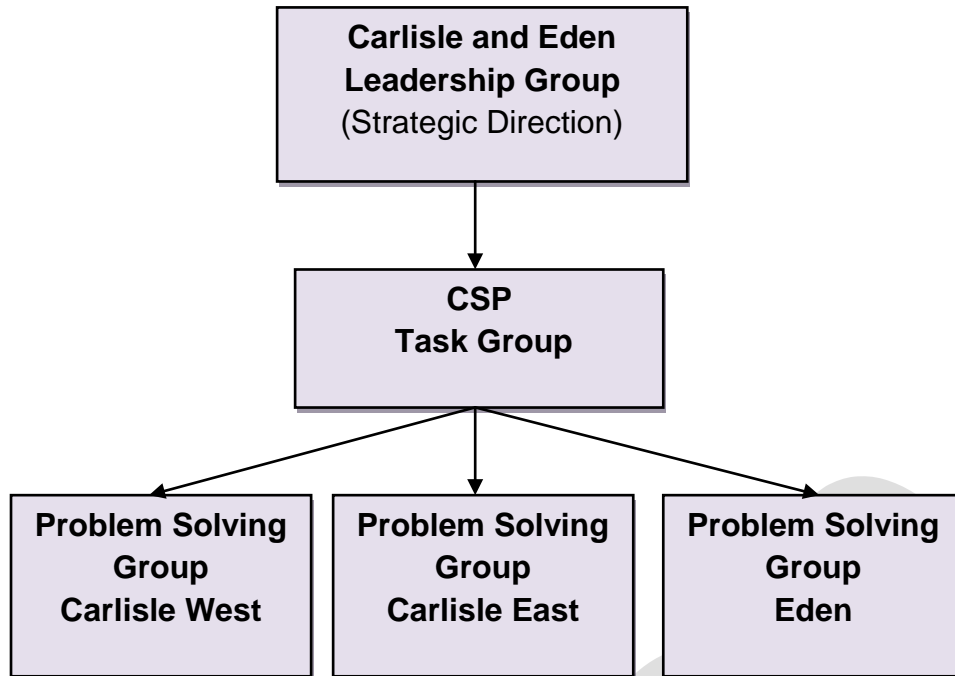
- Support partners to deliver the Hate Crime Action Plan.

### Reduce Re-offending

- Continue the Integrated Offender Management programme using a wide range of partners to manage problem individuals effectively in communities.
- Monitor effectiveness of North Cumbria (IOM) Integrated Offender Management scheme.
- Encourage the use of restorative justice through provision of training to a range of public, private and voluntary sector agencies.

# Carlisle and Eden Community Safety Partnership Plan 2014-2015

## Our Partnership Approach



## Performance 2013/ 2014

**17% Reduction in Violent Crime**  
**8% Reduction in Anti-Social Behaviour**  
**12% Reduction in Burglary Dwelling**  
**7% Reduction in Drug Possessions**  
**15% Reduction in Thefts from Motor Vehicles**

Carlisle and Eden Community Safety Partnership has and continues to be a successful partnership of multi agencies working together to address crime and disorder in North Cumbria. Since its inception, we have worked effectively to contribute to significant and sustained falls in crime and disorder. This plan sets out how, in partnership, we will address the priorities identified to ensure North Cumbria remains a safe place to live, work and study.

The partnership continues to have strong strategic leadership and dedicated and knowledgeable people in our task groups who are committed, prepared and focussed on the priorities for the year ahead.

**Mary Robinson, CSP Chair**

## Successes

### Best Bar None Scheme

The scheme has been instrumental in raising standards in bars, pubs and clubs in North Cumbria and has contributed to significant reductions in violent crime.

### Taxi Rank Marshals

Deployment of marshals at public ranks helps prevent escalation of serious disorder by early intervention which is reassuring to taxi operators and the public.

### Domestic Violence Bodycam Project

CSP funding allowed Cumbria police to purchase of 6 additional bodycams. During the 6 month trial all police officers on 3 Section Carlisle were issued with bodycams that would be worn at all times when on duty and would record their attendance at every domestic violence incident. At the end of the trial period there had been an improved conviction rate particularly for victimless prosecutions.

### Operation Roman Candle

Comparisons of ASB figures throughout the operation period show significant reductions in the two priority areas. City West saw reductions of 43% and Carlisle East saw reductions of 54%

### Appleby Fair

The co-ordinated approach by partners to Appleby Fair has made it a far safer and more community oriented event.

# **CUMBRIA COUNTY AND DISTRICTS COMMUNITY SAFETY STRATEGIC ASSESSMENT**

## **TECHNICAL REPORT**

**2012-13**

Ali Wilson

Senior Research, Information & Intelligence Officer

DRAFT



CUMBRIA  
CONSTABULARY  
SAFER STRONGER CUMBRIA



## Contents

<b>Introduction</b>	Page 3
<b>Crime Mapping</b>	Page 4
<b>Vulnerable Locality Index</b>	Pages 5 – 8
<b>Acorn Socio-Economic profiling</b>	Pages 9-10
<b>Anti-Social Behaviour</b>	Pages 11 – 12
<b>Crime</b>	Pages 13 – 32
▪ Total Crime	Page 13
▪ Burglary Dwelling	Pages 10
▪ Burglary other	Pages 11
▪ Criminal Damage	Pages 12
▪ Drug crime	Pages 13-14
▪ Offences Against the Person (including Alcohol related)	Pages 15-16
▪ Theft from a Motor Vehicle	Pages 17
▪ Theft of a Motor Vehicle	Page 18
▪ Business Crime	Pages 19-21
▪ Hate Crime	Pages 22
<b>Domestic Violence and Sexual Offences</b>	Pages 23-26
<b>Offending and Reoffending</b>	Pages 27-29
<b>Young people's offending</b>	Page 30
<b>Substance Misuse: CDAS drug data</b>	Pages 31-33
<b>Alcohol</b>	Pages 34-37
<b>Killed and Seriously Injured</b>	Page 38
<b>Fire Service – deliberate fires</b>	Page 39-40
<b>British Crime Survey</b>	Page 41
<b>Public Consultation Survey 2011</b>	Pages 42

## Introduction

The Crime & Disorder Regulations 2007 place a statutory duty on Community Safety Partnerships (CSPs) to prepare a Joint Strategic Assessment of crime and disorder in their local areas.

This Technical Report will provide the evidence base for the Community Safety Strategic Assessment which will be used by the Safer & Stronger Thematic Partnership and the Community Safety Partnerships (CSPs) for the development of Cumbria's Community Safety Agreement. The aim of the Community Safety Strategic Assessment is to provide partners, and other responsible authorities, with an understanding of the levels and patterns of crime, disorder and substance misuse in the county and local areas which will enable partners to plan their resources in order to tackle crime and disorder. The CSPs use this document to inform their Partnership Plans.

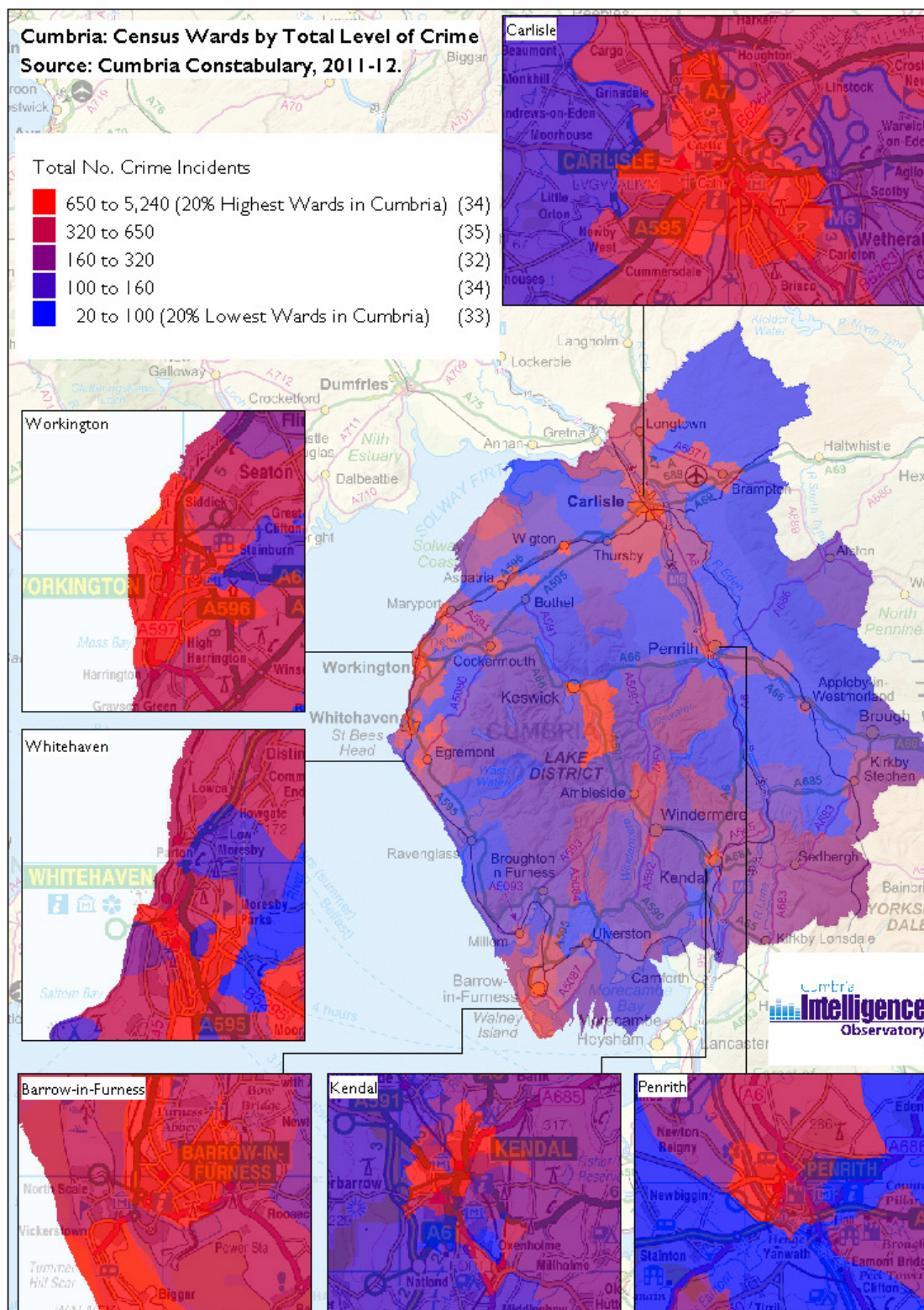
This Technical Report provides statistical analysis and information about crime, changes and patterns over time; and qualitative information about what those working or living in the local communities feel are priorities and issues from information drawn from the annual British Crime Survey and the annual Public Consultation Survey.

This Technical Report is part of a collection of documents which make up the Cumbria Community Safety Strategic Assessment. This document should be read in conjunction with the County and six District Summary Reports for Allerdale, Barrow, Carlisle, Copeland, Eden and South Lakeland.



## Crime Mapping

The map below shows the level of crime in Cumbria by wards. The darker shades represent areas with the greatest levels of crime and the lighter shades are areas with the least crime. The wards with the greatest levels of crime in each of the districts are: **Allerdale**: St. Michael's, St. John's, Moss Bay; **Barrow**: Central, Hindpool, Ormsgill; **Carlisle**: Castle, Currock, Upperby; **Copeland**: Harbour, Egremont South, Hensingham; **Eden**: Penrith West, Penrith South, Kirkby Stephen; **South Lakeland**: Kendal Fell, Kendal Mintsfeet, Windermere Bowness South.



(c) Crown Copyright and Database Right, 2012 Ordnance Survey Licence Number 100019596

## ACORN Data

ACORN is a socio-economic profiling tool which uses a range of information gathered from a number of sources to classify postcodes in the UK as belonging to one of: 6 socio-economic categories; 18 socio-economic groups; and 62 socio-economic types. This information provides us with an insight into the common characteristics of residents and enables us to make assumptions about how people might think or behave.

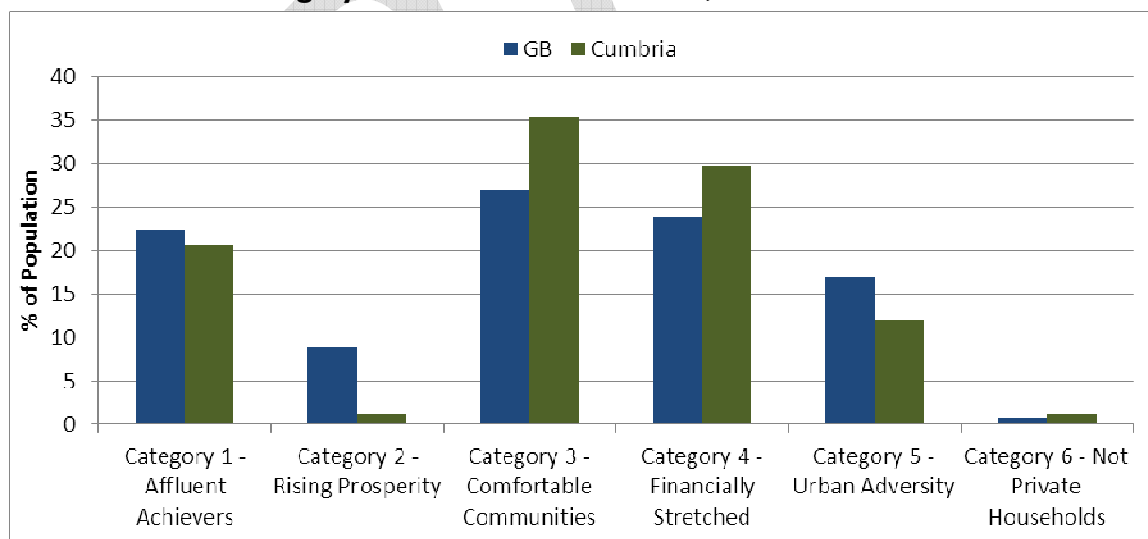
**Table 1: ACORN Category Profile (% Persons)**

Area Name	Category 1: Affluent Achievers	Category 2: Rising prosperity	Category 3: Comfortable Communities	Category 4: Financially stretched	Category 5: Urban Adversity	Category 6: Not private households
Cumbria	20.7%	1.2%	35.2%	29.8%	11.9%	1.2%
Allerdale	16.5%	0.4%	36.5%	34.9%	10.7%	1.0%
Barrow	11.7%	0.7%	27.1%	31.3%	28.5%	0.8%
Carlisle	16.8%	2.1%	33.6%	29.5%	17.2%	0.9%
Copeland	13.9%	1.1%	29.4%	45.6%	8.7%	1.4%
Eden	18.4%	0.5%	58.4%	19.2%	2.5%	1.0%
South Lakeland	40.4%	1.6%	33.4%	19.2%	3.6%	1.7%
Great Britain	22.4%	8.9%	26.9%	23.9%	17.0%	0.9%

### ACORN Category Profile - Cumbria vs. Great Britain

Chart 1 compares the profile of Cumbria's population with the profile of the population of Great Britain (GB) across the six broad 'ACORN Categories'.

**Chart 1: ACORN Category Profile – Cumbria vs. GB, 2013**



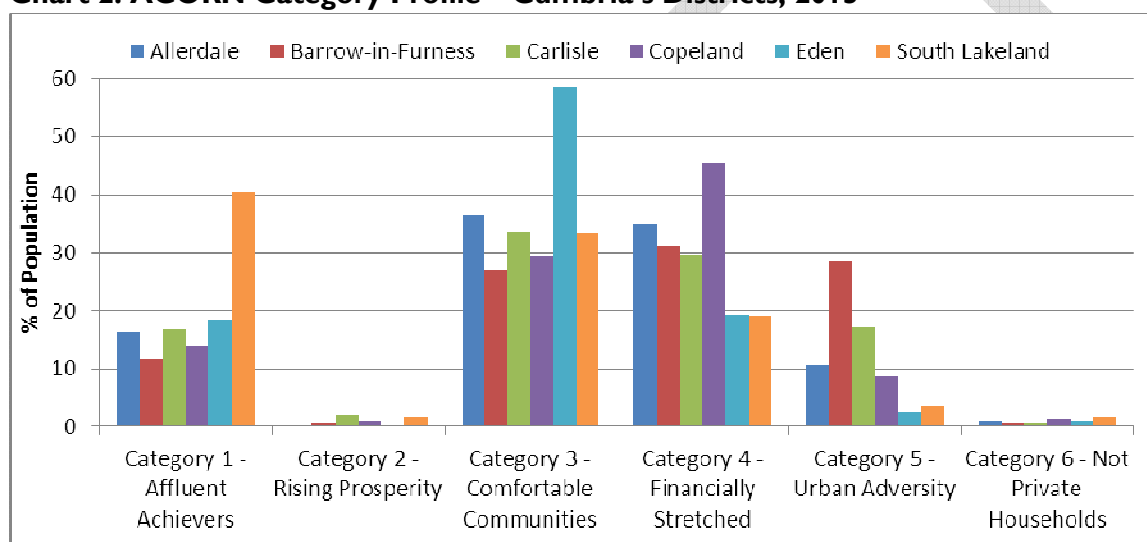
- 20.7% of Cumbria's residents live in postcodes that have been classified by CACI as 'ACORN Category 1 postcodes'; residents living in these postcodes are also referred to by CACI as 'Affluent Achievers'. Compared to national average, Cumbria has a slightly lower proportion of Affluent Achievers; with 22.4% of the population of GB living in ACORN Category 1 postcodes.
- Just 1.2% of Cumbria's residents live in ACORN Category 2 postcodes (Rising Prosperity); this is much lower than the national average (GB 8.9%).

- The greatest proportion of Cumbria's residents (35.2%) live in ACORN Category 3 postcodes (Comfortable Communities); this is much higher than the national average (GB 26.9%).
- Furthermore, the second greatest proportion of Cumbria's residents (29.8%) live in ACORN Category 4 postcodes (Financially Stretched); again, this is higher than the national average (GB 23.9%).
- 11.9% of Cumbria's residents live in ACORN Category 5 postcodes (Urban Adversity); this is lower than the national average (GB 17%).
- Finally, 1.2% of Cumbria's residents live in ACORN Category 6 postcodes (Not Private Households – i.e. business areas or communal establishments such as care homes, prisons etc.); this is similar to the national average (GB 0.9%).

### ACORN Category Profile – Cumbria's Districts

Chart 2 compares the profile of the populations of each of Cumbria's districts across the six broad ACORN Categories.

**Chart 2: ACORN Category Profile – Cumbria's Districts, 2013**



The ACORN Category profiles of Cumbria's districts vary considerably from the county average. Of Cumbria's six districts:

- South Lakeland has by far the greatest proportion of Affluent Achievers (ACORN Category 1); 40.4% vs. 20.7% for Cumbria. In contrast, just 11.7% of residents in Barrow-in-Furness live in postcodes classified as ACORN Category 1.
- Carlisle has the greatest proportion of residents living in ACORN Category 2 postcodes (Rising Prosperity); 2.1%. Although this proportion is higher than the county average (1.2%), it is still much lower than the national average (8.9%).
- Eden has the greatest proportion of residents living in ACORN Category 3 postcodes (Comfortable Communities); 58.4% compared 35.2% for Cumbria.
- Copeland has the greatest proportion of residents living in ACORN Category 4 postcodes (Financially Stretched); 45.6% compared to 29.8% for Cumbria.
- Barrow-in-Furness has the greatest proportion of residents living in ACORN Category 5 postcodes (Urban Adversity); 28.5%, which is more than double the county average of 11.9%. Inversely, the proportions of residents in Eden and South Lakeland living in postcodes belonging to this classification are less than a third of the county average; 2.5% and 3.6% respectively.



## Anti-Social Behaviour, including young people

This section looks at data in relation to Anti-Social Behaviour (ASB) including ASB involving young people. It includes all ASB where an interest marker was added by the call handler stating that it involved youths (Age under 18). The source of this information is Cumbria Constabulary. Data is also provided by the Home Office iQuanta system when making comparisons to other Most Similar Forces. iQuanta is a web-based tool which provides policing performance information and analysis. The aim of the Constabulary is to reduce the number of offences.

### Headlines/Key findings

- Throughout 2012-13 there were 25,772 ASB incidents in Cumbria, a 1.1% reduction from the previous year; and there were 6,287 incidents involving young people, a 16.7% reduction
- Numbers of ASB were at their highest in August. Numbers of Youth ASB were at their highest in October
- Compared to the previous year, there has been a reduction in ASB in Allerdale, Carlisle and South Lakeland; and an increase in Barrow, Copeland and Eden
- Carlisle district had the highest number of offences, equating to 28% of the total number, however Barrow had the greatest rate per 1,000 population
- Eden district had the lowest number of offences, equating to 6% of the total number
- The wards with the highest number of ASB incidents in each of the districts are:  
**Allerdale:** St. Michael's, St. John's and Wigton;  
**Barrow:** Central, Hindpool and Ormsgill  
**Carlisle:** Castle, Currock and Upperby  
**Copeland:** Harbour; Hensingham, Egremont South  
**Eden:** Penrith West, Penrith South, Penrith North  
**South Lakeland:** Kendal Fell, Kendal Mintsfeet, Ulverston Town  
 The wards with the highest number of incidents involving young people are:  
**Allerdale:** St Michael's, Moss Bay, Wigton  
**Barrow:** Central, Hindpool, Risedale  
**Carlisle:** Castle, Upperby, Belle Vue  
**Copeland:** Egremont South, Hensingham, Harbour  
**Eden:** Penrith South, Penrith West, Penrith East/Appleby  
**South Lakeland:** Kendal Fell, Kendal Kirkland, Kendal Mintsfeet
- **The most prevalent category is 'nuisance' behaviour accounting for 75.7% of all ASB**
- In Cumbria, most offenders and victims are male and aged 18-30years

### Conclusions

Anti-Social Behaviour and incidents involving young people have fallen year on year in Cumbria and in all of the districts over 3 years.

### Data

**Table 1: Anti-Social Behaviour incidents in Cumbria and Districts for the last 3 financial years**

	2010-11	2011-12	2012-13	% change in the last year	Rate (per 1,000)
Cumbria	32,932	26,062	25,772	-1.1	51.6
Allerdale	6,016	4,685	4,468	-4.6	46.4
Barrow	6,604	5,159	5,241	1.6	<b>76.6</b>
Carlisle	9,020	7,191	<b>7,100</b>	-1.3	65.7
Copeland	4,770	3,546	3,883	9.5	55.2
Eden	2,195	1,656	<b>1,669</b>	0.8	31.7
South Lakeland	4,334	3,825	3,411	-10.8	33.0

**Table 2: ASB incidents involving young people in Cumbria and Districts for the last 3 financial years**

	2010-11	2011-12	2012-13	% change in the last year	Rate (per 1,000)
Cumbria	10,405	7,544	6,287	-16.7	12.6
Allerdale	2,043	1,547	1,224	-20.9	12.7
Barrow	2,221	1,526	1,314	-13.9	19.2
Carlisle	2,788	1,831	<b>1,512</b>	-17.4	14.0
Copeland	1,597	1,015	1,090	7.4	15.5
Eden	476	381	<b>321</b>	-15.7	6.1
South Lakeland	1,280	1,244	826	-33.6	8.0

DRAFT

## Total Crime

This section looks the total of All Crime. The source of this information is Cumbria Constabulary. The aim of the Constabulary is to reduce the number of offences.

### Headlines/Key findings

- Throughout 2012-13 there were a total of 23,225 crimes recorded in Cumbria, a 10.7% reduction from the previous year
- Numbers were at their highest in July and December
- Compared to the previous year there has been a reduction in crime in all districts with the exception of Barrow where crime has increased by 3.0%
- Carlisle district had the highest number and rate of offences per 1,000 population
- Eden district had the lowest number and rate of offences
- The wards with the highest number of crimes in each of the districts are:  
**Allerdale:** St. Michael's, St. John's and Moss Bay;  
**Barrow:** Central, Hindpool, Ormsgill  
**Carlisle:** Castle, Currock, Upperby  
**Copeland:** Harbour, Egremont South, Hensingham  
**Eden:** Penrith West, Penrith South, Kirkby Stephen  
**South Lakeland:** Kendal Fell, Kendal Mintsfeet, Windermere Bowness South
- In Cumbria, most offenders are male and aged between 18-30years; and most victims are female and aged 18-30years

### Conclusion

Numbers of crimes have fallen in Cumbria year on year. In the last year numbers have fallen in all districts with the exception of Barrow where numbers have increased. Despite fluctuations, total numbers of crime have fallen in all districts over the last 3 years.

### Data

**Table 1: All crime offences in Cumbria and Districts for the last 3 financial years**

	2010-11	2011-12	2012-13	% change in the last year	Rate (per 1,000)
Cumbria	26,966	25,996	23,225	-10.7	52.1
Allerdale	5,034	5,166	4,423	-14.4	53.6
Barrow	4,667	4,057	4,180	3.0	59.3
Carlisle	7,496	7,463	6,487	-13.1	69.1
Copeland	3,581	3,222	2,902	-9.9	45.8
Eden	1,974	1,926	1,691	-12.2	36.5
South Lakeland	4,214	4,162	3,540	-14.9	40.2

## Burglary Dwelling

This section looks at data in relation to Burglary Dwelling offences. The source of this information is Cumbria Constabulary. Data is also provided by the Home Office iQuanta system when making comparisons to other Most Similar Forces. The aim of the Constabulary is to maintain or decrease the number of offences.

### Headlines/Key findings

- Throughout 2012-13 there were 641 crimes in Cumbria, a -3.5% decrease from the previous year
- Numbers of crimes fell in Barrow, Copeland and Eden; numbers increased in Allerdale, Carlisle and South Lakeland
- The greatest number of crimes took place in October (73)
- Barrow had the highest rate of offences per 1,000 population, Eden had the lowest rate
- The wards with the highest number of crimes in each of the districts are:  
**Allerdale:** Ellen, St. Michael's, Moss Bay  
**Barrow:** Central, Barrow Island, Hindpool  
**Carlisle:** Botcherby, St. Aidans, Castle  
**Copeland:** Harbour, Mirehouse, Hensingham  
**Eden:** Hesketh, Kirkby Stephen, Kirkby Thore  
**South Lakeland:** Windermere Bowness South, Kendal Highgate, Ulverston East
- The burglary dwelling crime rate in Cumbria is below the average and is the lowest of its Most Similar Groups (out of 8 forces)
- In Cumbria, most offenders are male and aged between 18-30years; and most victims are male and aged over 60years

### Conclusions

In Cumbria numbers of offences have fallen in the last year and over a 3 year period. Despite the overall fall, numbers have increased in Allerdale, Carlisle and South Lakeland.

### Data

**Table 1: Burglary Dwelling offences in Cumbria and Districts for the last 3 financial years**

	2010-11	2011-12	2012-13	% change in the last year	Rate (per 1,000)
Cumbria	661	664	641	-3.5	1.3
Allerdale	127	139	146	5.0	1.5
Barrow	150	122	120	-1.6	1.8
Carlisle	159	182	186	2.2	1.7
Copeland	84	87	54	-37.9	0.8
Eden	49	42	35	-16.7	0.7
South Lakeland	92	92	100	8.7	1.0

### District results against Most Similar Groups (each district has its own set of MSGs):

Allerdale – below the average, ranked 5 (out of 15; 1 being the best, 15 being the worst)

Barrow – below the average, ranked 1

Carlisle – below the average, ranked 4

Copeland – below the average, ranked 1

Eden – below the average, ranked 1

South Lakeland – below the average, ranked 2

## Burglary Other (non domestic)

The source of this information is Cumbria Constabulary. Data is also provided by the Home Office iQuanta system when making comparisons to other Most Similar Forces. The aim of the Constabulary is to maintain or reduce the number of Burglary offences.

### Headlines/Key findings

- Throughout 2012-13 there were 1,514 crimes in Cumbria, a 7.8% increase compared to the previous year
- Compared to the previous year, numbers of crimes increased in all districts with the exception of Allerdale and Copeland where they fell
- Carlisle has the highest rate of offences per 1,000 population, Copeland has the lowest rate
- The wards with the highest number of crimes in each of the districts are:  
**Allerdale:** Moss Bay, St Michael's, Harrington  
**Barrow:** Central, Hindpool, Walney South  
**Carlisle:** Harraby, Castle, Upperby  
**Copeland:** Egremont South, Frizington, Harbour  
**Eden:** Penrith West, Hesketh, Kirkby Stephen  
**South Lakeland:** Windermere Bowness South, Kirkby Lonsdale, Kendal Mintsfeet
- The crime rate in Cumbria is below the average and is the second lowest of its Most Similar Groups
- In Cumbria, most offenders are male and aged between 18-30years; and most victims are male and aged 41-50years

### Conclusions

In Cumbria numbers of offences have increased in the past year and over a 3 year period. In the past year numbers have increased in Barrow, Carlisle, Eden and South Lakeland. In Allerdale and Copeland numbers have fallen in the past year.

### Data

**Table 1: Burglary Other in Cumbria and Districts for the last 3 financial years**

	2010-11	2011-12	2012-13	% change in the last year	Rate (per 1,000)
<b>Cumbria</b>	1,429	1,405	1,514	7.8	3.0
<b>Allerdale</b>	287	336	283	-15.8	2.9
<b>Barrow</b>	180	180	221	22.8	3.2
<b>Carlisle</b>	348	377	436	15.6	4.0
<b>Copeland</b>	162	150	127	-15.3	1.8
<b>Eden</b>	194	131	134	2.3	2.5
<b>South Lakeland</b>	258	231	313	35.5	3.0

### District results against Most Similar Groups (each district has its own set of MSGs):

Allerdale – below the average, ranked 6 (out of 15; 1 being the best, 15 being the worst)

Barrow – below the average, ranked 1

Carlisle – below the average, ranked 8

Copeland – below the average, ranked 1

Eden – below the average, ranked 1

South Lakeland – below the average, ranked 6



## Criminal Damage

The source of this information is Cumbria Constabulary. Data is also provided by the Home Office iQuanta system when making comparisons to other Most Similar Forces. The aim of the Constabulary is to maintain or reduce the number of Criminal Damage offences.

### Headlines/Key findings

- Throughout 2012-13 there were 5,315 offences in Cumbria, a 15.6% increase from the previous year
- Compared to the previous year, numbers of offences have increased in all districts with the exception of Barrow where they have fallen
- Barrow had the highest rate of offences per 1,000 population, Eden had the lowest
- The wards with the highest number of crimes in each of the districts are:  
**Allerdale:** St. Michael's, St. John's, Moss Bay,  
**Barrow:** Central, Hindpool, Parkside  
**Carlisle:** Castle, Currock, Upperby  
**Copeland:** Harbour, Hensingham, Mirehouse  
**Eden:** Penrith West, Penrith South, Kirkby Stephen  
**South Lakeland:** Kendal Fell, Kendal Kirkland, Kendal Mintsfeet
- The crime rate in Cumbria is above the average and is ranked 6th highest of its Most Similar Groups (out of 8 Forces)
- In Cumbria, most offenders are male and aged between 18-30years; and most victims are female aged 18-30years

### Conclusions

In Cumbria, numbers of offences have been falling year on year. In the past year numbers have fallen in all districts with the exception of Barrow where they have increased. Despite this, over a 3 year period numbers of offences have fallen in all districts.

### Data

**Table 1: Criminal Damage in Cumbria and Districts for the last 3 financial years**

	2010-11	2011-12	2012-13	% change in the last year	Rate (per 1,000)
<b>Cumbria</b>	6,912	6,298	5,315	-15.6	10.6
<b>Allerdale</b>	1,340	1,324	1,110	-16.2	11.5
<b>Barrow</b>	1,308	958	994	3.8	14.5
<b>Carlisle</b>	1,660	1,588	1,250	-21.3	11.6
<b>Copeland</b>	1,149	914	858	-6.1	12.2
<b>Eden</b>	359	388	305	-21.4	5.8
<b>South Lakeland</b>	1,096	1,126	798	-29.1	7.7

### District results against Most Similar Groups (each district has its own set of MSGs):

Allerdale – above the average, ranked 12 (out of 15; 1 being the best, 15 being the worst)

Barrow – above the average, ranked 13

Carlisle – above the average, ranked 10

Copeland – above the average, ranked 14

Eden – below the average, ranked 4

South Lakeland – above the average, ranked 9

## Drug Crime

This section looks at data in relation to Drug Crime, including possession and trafficking. The source of this information is Cumbria Constabulary. Data is also provided by the Home Office iQuanta system when making comparisons to other Most Similar Forces. The aim of the Constabulary is to increase the number of drug offences and therefore reduce the number of drugs in circulation.

### Headlines/Key findings

- Throughout 2012-13 there were 1,533 drug offences in Cumbria, a 15.5% decrease from the previous year
- In Cumbria drug possession was down by 16.8%; and drug trafficking was down by 7.3%
- Numbers were down in all districts with the exception of Barrow where numbers increased
- Carlisle had the highest rate of offences per 1,000 population, South Lakeland had the lowest
- The wards with the highest number of crimes in each of the districts are:  
**Allerdale:** St. Michael's, Moss Bay, St. John's  
**Barrow:** Central, Hindpool, Ormsgill  
**Carlisle:** Castle, Currock, Harraby  
**Copeland:** Harbour, Sandwith, Hensingham  
**Eden:** Askham, Penrith West, Penrith South  
**South Lakeland:** Kendal Fell, Windermere Bowness South, Kendal Far Cross
- The crime rate in Cumbria is above the average and is the second highest of its Most Similar Groups (out of 8 Forces). Allerdale, Carlisle, and Eden are above average.
- In Cumbria, most offenders are male and aged between 18-30years

### Conclusion

In Cumbria numbers of offences have fallen in the past year and over a 3 year period. In the past year numbers of offences have fallen in all districts with the exception of Barrow where they have increased. Allerdale experienced the greatest fall in offences by 34.7%.

### Data

**Table 1: Drug Crime in Cumbria and Districts for the last 3 financial years**

	2010-11	2011-12	2012-13	% change in the last year	Rate (per 1,000)
<b>Cumbria</b>	1,809	1,815	1,533	-15.5	3.1
<b>Allerdale</b>	371	487	318	-34.7	3.3
<b>Barrow</b>	188	187	206	10.2	3.0
<b>Carlisle</b>	474	477	468	-1.9	4.3
<b>Copeland</b>	206	241	209	-13.3	3.0
<b>Eden</b>	245	204	149	-27.0	2.8
<b>South Lakeland</b>	325	219	183	-16.4	1.8

**Table 2: Drug Crime in Cumbria for the last 3 financial years**

Type of drugs offence	2010-11	2011-12	2012-13	% change in the last year
Drugs (other offences)	11	9	4	-55.6
Drugs (possession)	1,495	1,532	1,275	-16.8
Drugs (trafficking)	303	274	254	-7.3
All drug offences	1,809	1,815	1,533	-15.5

**Table 3: Drug Crime in Allerdale for the last 3 financial years**

Type of drugs offence	2010-11	2011-12	2012-13	% change in the last year
Drugs (other offences)	3	5	1	-80.0
Drugs (possession)	324	389	273	-29.8
Drugs (trafficking)	44	93	44	-52.7
All drug offences	371	487	318	-34.7

**Table 4: Drug Crime in Barrow for the last 3 financial years**

Type of drugs offence	2010-11	2011-12	2012-13	% change in the last year
Drugs (other offences)	2	1	1	0.0
Drugs (possession)	148	149	168	12.8
Drugs (trafficking)	38	37	37	0.0
All drug offences	188	187	206	10.2

**Table 5: Drug Crime in Carlisle for the last 3 financial years**

Type of drugs offence	2010-11	2011-12	2012-13	% change in the last year
Drugs (other offences)	4	1	1	0.0
Drugs (possession)	409	416	401	-3.6
Drugs (trafficking)	61	60	66	10.0
All drug offences	474	477	468	-1.9

**Table 6: Drug Crime in Copeland for the last 3 financial years**

Type of drugs offence	2010-11	2011-12	2012-13	% change in the last year
Drugs (other offences)	1	0	1	100.0
Drugs (possession)	178	219	169	-22.8
Drugs (trafficking)	27	22	39	77.3
All drug offences	206	241	209	-13.3

**Table 7: Drug Crime in Eden for the last 3 financial years**

Type of drugs offence	2010-11	2011-12	2012-13	% change in the last year
Drugs (other offences)	0	0	0	0.0
Drugs (possession)	214	175	118	-32.6
Drugs (trafficking)	31	29	31	6.9
All drug offences	245	204	149	-27.0

**Table 8: Drug Crime in South Lakeland for the last 3 financial years**

Type of drugs offence	2010-11	2011-12	2012-13	% change in the last year
Drugs (other offences)	1	2	0	-100.0
Drugs (possession)	222	184	146	-20.7
Drugs (trafficking)	102	33	37	12.1
All drug offences	325	219	183	-16.4

**District results against Most Similar Groups (each district has its own set of MSGs):**

Allerdale – above the average, ranked 14 (out of 15; 1 being the best, 15 being the worst)

Barrow – below the average, ranked 8

Carlisle – above the average, ranked 13

Copeland – below the average, ranked 9

Eden – above the average, ranked 12

South Lakeland – below the average, ranked 2

## Offences Against the Person (Violence)

This section looks at data in relation to Offences Against the Person. The source of this information is Cumbria Constabulary. Data is also provided by the Home Office iQuanta system when making comparisons to other Most Similar Forces. The aim of the Constabulary is to maintain/decrease the number of offences.

### Headlines/Key findings

- Throughout 2012-13 there were a total of 5,461 offences in Cumbria, a 13% decrease from the previous year; and a total of 2,105 Alcohol Related offences, a 17.5% decrease from the previous year
- Numbers of offences have fallen in all districts
- Barrow had the highest rate of offences per 1,000 population at 16.8, Eden had the lowest rate at 6.0
- The wards with the highest number of crimes in each of the districts are:  
**Allerdale:** St. John's, St. Michael's, Moss Bay  
**Barrow:** Central, Hindpool, Risedale  
**Carlisle:** Castle, Currock, Botcherby  
**Copeland:** Harbour, Cleator Moor North, Sandwith  
**Eden:** Penrith West, Penrith South, Penrith North  
**South Lakeland:** Kendal Fell, Ulverston Town, Windermere Bowness South
- The crime rate in Cumbria is below the average and is ranked 4th out of its Most Similar Groups (out of 8 Forces)
- Numbers of offences were highest in December
- In Cumbria, most offenders are male and aged between 18-30years; and most victims are female and aged 18-30years

### Conclusion

In Cumbria and districts numbers of offences have fallen in the past year and over a 3 year period.

### Data

**Table 1: Offences Against the Person in Cumbria and Districts for the last 3 financial years**

	2010-11	2011-12	2012-13	% change in the last year	Rate (per 1,000)
<b>Cumbria</b>	6,277	6,279	5,461	-13.0	10.9
<b>Allerdale</b>	1,088	1,117	998	-10.7	10.4
<b>Barrow</b>	1,159	1,223	1,147	-6.2	16.8
<b>Carlisle</b>	1,917	1,869	1,480	-20.8	13.7
<b>Copeland</b>	928	814	791	-2.8	11.3
<b>Eden</b>	379	402	317	-21.1	6.0
<b>South Lakeland</b>	806	854	727	-14.9	7.0

### Alcohol Related Data

This includes all offences against the person where an interest marker was added by the officer stating that the offender was under the influence of alcohol.

**Table 2: Alcohol Related Offences Against the Person in Cumbria and districts for the last 3 financial years**

	2010-11	2011-12	2012-13	% change in the last year	Rate (per 1,000)
<b>Cumbria</b>	2,020	2,550	2,105	-17.5	4.2
<b>Allerdale</b>	311	391	363	-7.2	3.8
<b>Barrow</b>	416	606	446	-26.4	6.5
<b>Carlisle</b>	627	697	534	-23.4	4.9
<b>Copeland</b>	309	354	313	-11.6	4.5
<b>Eden</b>	108	145	123	-15.2	2.3
<b>South Lakeland</b>	249	357	327	-8.4	3.2

**District results against Most Similar Groups (each district has its own set of MSGs):**

Allerdale – below the average, ranked 7 (out of 15; 1 being the best, 15 being the worst)

Barrow – above the average, ranked 11

Carlisle – below the average, ranked 7

Copeland – above the average, ranked 8

Eden – below the average, ranked 1

South Lakeland – below the average, ranked 4

## Theft from a Motor Vehicle

This section looks at data in relation to Theft from a Motor Vehicle (TFMV). The source of this information is Cumbria Constabulary. Data is also provided by the Home Office iQuanta system when making comparisons to other Most Similar Forces. The aim of the Constabulary is to decrease the number of offences.

### Headlines/Key findings

- Throughout 2012-13 there were a total of 1,135 offences in Cumbria, a 7.3% increase from the previous year
- Compared to the previous year, numbers of offences have fallen in Allerdale, Copeland and South Lakeland; numbers have increased in Barrow, Carlisle, and Eden
- Barrow had the greatest increase of 65.3%
- Carlisle had the greatest rate of offences per 1,000 population, Copeland had the lowest
- Numbers were highest in October
- The wards with the highest number of crimes in each of the districts are:  
**Allerdale:** Ellenborough, St. Michael's, Ewanrigg  
**Barrow:** Hindpool, Central, Parkside  
**Carlisle:** Belah, Currock, Denton Holme  
**Copeland:** Harbour, Sandwith, Arlecdon  
**Eden:** Penrith West, Askham, Appleby  
**South Lakeland:** Lakes Grasmere, Lakes Ambleside, Kendal Mintsfeet
- The 'vehicle offences' crime rate in Cumbria is below the average of its Most Similar Groups, and ranks 1st (lowest) out of 8 Forces
- In Cumbria, most offenders are male and aged between 18-30years; and most victims are male and aged 41-50years

### Conclusion

In Cumbria numbers of offences have increased in the last year (and over a 3 year period); numbers have increased in Barrow, Carlisle, Copeland and Eden; numbers have fallen in Allerdale, Copeland and South Lakeland.

### Data

**Table 1: TFMV in Cumbria and Districts for the last 3 financial years**

	2010-11	2011-12	2012-13	% change in the last year	Rate (per 1,000)
<b>Cumbria</b>	1,098	1,058	1,135	7.3	2.3
<b>Allerdale</b>	276	263	257	-2.3	2.7
<b>Barrow</b>	187	98	162	65.3	2.4
<b>Carlisle</b>	221	272	317	16.5	2.9
<b>Copeland</b>	105	110	85	-22.7	1.2
<b>Eden</b>	78	102	117	14.7	2.2
<b>South Lakeland</b>	231	213	197	-7.5	1.9

### District results against Most Similar Groups (each district has its own MSGs):

Allerdale – below the average, ranked 6 (out of 15; 1 being the best, 15 being the worst)

Barrow – below the average, ranked 1

Carlisle – below the average, ranked 6

Copeland – below the average, ranked 1

Eden – below the average, ranked 6

South Lakeland – below the average, ranked 2

## Theft of a Motor Vehicle (Vehicle taking)

This section looks at data in relation to Theft of a Motor Vehicle (TOMV). The source of this information is Cumbria Constabulary. Data is also provided by the Home Office iQuanta system when making comparisons to other Most Similar Forces. The aim of the Constabulary is to maintain/decrease the number of offences.

### Headlines/Key findings

- Throughout 2012-13 there were a total of 350 offences in Cumbria, a 4.9 % decrease from the previous year
- Compared to the previous year, numbers of offences have fallen in all districts with the exception of Barrow and Eden where they have increased
- Barrow had the greatest rate of offences per 1,000 population, South Lakeland had the lowest
- The wards with the highest number of crimes in each of the districts are:  
**Allerdale:** Moss Bay, Moorclose, Silloth  
**Barrow:** Central, Hindpool, Risedale  
**Carlisle:** Upperby, Denton Holme, Castle  
**Copeland:** Distington, Cleator Moor South, Mirehouse  
**Eden:** Hesketh, Penrith West, Dacre  
**South Lakeland:** Kendal Mintsfeet, Kendal Fell, Windermere Bowness South
- The 'vehicle offences' crime rate in Cumbria is below the average of its Most Similar Groups, and is the lowest out of 8 Forces. All districts are below the average of their Most Similar Groups
- In Cumbria, most offenders and victims are male and aged between 18-30years

### Conclusions

In Cumbria numbers of offences have decreased year on year. Numbers of offences fell in all districts with the exception of Barrow and Eden where they increased. The greatest increase has been in Barrow.

### Data

**Table 1: TOMV in Cumbria and Districts for the last 3 financial years**

	2010-11	2011-12	2012-13	% change in the last year	Rate (per 1,000)
<b>Cumbria</b>	465	368	350	-4.9	0.7
<b>Allerdale</b>	88	73	57	-21.9	0.6
<b>Barrow</b>	74	38	71	86.8	1.0
<b>Carlisle</b>	145	130	100	-23.1	0.9
<b>Copeland</b>	63	44	34	-22.7	0.5
<b>Eden</b>	40	34	42	23.5	0.8
<b>South Lakeland</b>	55	49	46	-6.1	0.4



## Business Crime

This section looks at data in relation to Business Crime. **This includes all crimes where the victim was entered by the officer as a business rather than an individual.** The source of this information is Cumbria Constabulary. The aim of the Constabulary is to decrease the number of offences.

### Headlines/Key findings

- Throughout 2012-13 there were a total of 4,429 offences in Cumbria, a 12.2% decrease from the previous year
- Compared to the previous year numbers of offences have fallen in Cumbria and in all districts, with the exception of Eden where numbers have increased
- Carlisle had the greatest rate of offences per 1,000 population, Eden had the lowest
- The wards with the highest number of crimes in each of the districts are:  
**Allerdale:** St. Michael's, St. John's, Moss Bay  
**Barrow:** Central, Hindpool, Parkside  
**Carlisle:** Castle, Currock, Denton Holme  
**Copeland:** Harbour, Frizington, Egremont South  
**Eden:** Penrith West, Penrith South, Kirkby Stephen  
**South Lakeland:** Kendal Fell, Kendal Mintsfeet, Lakes Ambleside

### Conclusion

In Cumbria numbers of offences have decreased year on year. Numbers have fallen in all districts in the last year with the exception of Eden where they have increased.

### Data

Please note that all instances of Burglary Dwelling are where a business owns the dwelling that has been targeted.

**Table 1: Business Crime in Cumbria and Districts for the last 3 financial years**

	2010-11	2011-12	2012-13	% change in the last year	Rate (per 1,000)
<b>Cumbria</b>	5,264	5,047	4,429	-12.2	8.9
<b>Allerdale</b>	1,059	1,152	807	-29.9	8.4
<b>Barrow</b>	758	644	640	-0.6	9.4
<b>Carlisle</b>	1,754	1,605	1,608	0.2	14.9
<b>Copeland</b>	662	591	411	-30.5	5.8
<b>Eden</b>	287	266	295	10.9	5.6
<b>South Lakeland</b>	744	789	668	-15.3	6.5

**Table 2: Numbers of Business Crimes, by offence type, in Cumbria for the last 3 financial years**

Offence	2010-11	2011-12	2012-13	% change in the last year
Burglary dwelling	23	23	26	13.0
Burglary other	454	385	401	4.2
Criminal Damage	1,466	1,197	1,020	-14.8
Fraud & Forgery	209	238	177	-25.6
Offences Against the Person	3	4	5	25.0
Robbery	6	2	1	-50.0
Theft	2,894	3,001	2,625	-12.5
Theft from a Motor Vehicle	184	176	163	-7.4
Theft of a Motor Vehicle	25	21	11	-47.6
<b>Total</b>	<b>5,264</b>	<b>5,047</b>	<b>4,429</b>	<b>-12.2</b>



**Table 3: Numbers of Business Crimes, by offence type, in Allerdale for the last 3 financial years**

Offence	2010-11	2011-12	2012-13	% change in the last year
Burglary dwelling	5	2	7	250.0
Burglary other	124	130	89	-31.5
Criminal Damage	303	288	219	-24.0
Fraud & Forgery	22	35	16	-54.3
Offences Against the Person	0	0	0	0
Robbery	4	1	0	-100.0
Theft	519	634	444	-30.0
Theft from a Motor Vehicle	72	57	31	-45.6
Theft of a Motor Vehicle	10	5	1	-80.0
<b>Total</b>	<b>1,059</b>	<b>1,152</b>	<b>807</b>	<b>-29.9</b>

**Table 4: Numbers of Business Crimes, by offence type, in Barrow for the last 3 financial years**

Offence	2010-11	2011-12	2012-13	% change in the last year
Burglary dwelling	2	5	5	0.0
Burglary other	39	42	43	2.4
Criminal Damage	222	151	168	11.3
Fraud & Forgery	16	24	18	-25.0
Offences Against the Person	1	0	3	100.0+
Robbery	0	0	0	0
Theft	464	415	395	-4.8
Theft from a Motor Vehicle	12	4	8	100.0
Theft of a Motor Vehicle	2	3	0	-100.0
<b>Total</b>	<b>758</b>	<b>644</b>	<b>640</b>	<b>-0.6</b>

**Table 5: Numbers of Business Crimes, by offence type, in Carlisle for the last 3 financial years**

Offence	2010-11	2011-12	2012-13	% change in the last year
Burglary dwelling	12	12	7	-41.7
Burglary other	116	65	90	38.5
Criminal Damage	413	321	280	-12.8
Fraud & Forgery	80	85	88	3.5
Offences Against the Person	2	3	1	-66.7
Robbery	1	1	0	-100.0
Theft	1,081	1,057	1075	1.7
Theft from a Motor Vehicle	43	57	63	10.5
Theft of a Motor Vehicle	6	4	4	0.0
<b>Total</b>	<b>1,754</b>	<b>1,605</b>	<b>1608</b>	<b>0.2</b>

**Table 6: Numbers of Business Crimes, by offence type, in Copeland for the last 3 financial years**

Offence	2010-11	2011-12	2012-13	% change in the last year
Burglary dwelling	2	2	3	50.0
Burglary other	65	53	44	-17.0
Criminal Damage	263	163	111	-31.9
Fraud & Forgery	17	21	15	-28.6
Offences Against the Person	0	0	0	0
Robbery	0	0	0	0
Theft	302	329	227	-31.0
Theft from a Motor Vehicle	11	19	10	-47.4
Theft of a Motor Vehicle	2	4	1	-75.0
<b>Total</b>	<b>662</b>	<b>591</b>	<b>411</b>	<b>-30.5</b>

**Table 7: Numbers of Business Crimes, by offence type, in Eden for the last 3 financial years**

Offence	2010-11	2011-12	2012-13	% change in the last year
Burglary dwelling	0	1	1	0.0
Burglary other	47	27	45	66.7
Criminal Damage	67	70	66	-5.7
Fraud & Forgery	20	28	15	-46.4
Offences Against the Person	0	1	0	-100.0
Robbery	1	0	0	0
Theft	132	117	143	22.2
Theft from a Motor Vehicle	16	19	22	15.8
Theft of a Motor Vehicle	4	3	3	0.0
<b>Total</b>	<b>287</b>	<b>266</b>	<b>295</b>	<b>10.9</b>

**Table 8: Numbers of Business Crimes, by offence type, in South Lakeland for the last 3 financial years**

Offence	2010-11	2011-12	2012-13	% change in the last year
Burglary dwelling	2	1	3	200.0
Burglary other	63	68	90	32.4
Criminal Damage	198	204	176	-13.7
Fraud & Forgery	54	45	25	-44.4
Offences Against the Person	0	0	1	100.0
Robbery	0	0	1	100.0
Theft	396	449	341	-24.1
Theft from a Motor Vehicle	30	20	29	45.0
Theft of a Motor Vehicle	1	2	2	0.0
<b>Total</b>	<b>744</b>	<b>789</b>	<b>668</b>	<b>-15.3</b>

## Hate Crime

This section looks at data in relation to Hate Crime, crimes which have been given a hate crime interest marker by Police Officers. This includes all crimes where an interest marker was added by the officer stating that the crime was either Racially, Religiously, Sexual Orientation, Disability or Transgender motivated. The source of this information is Cumbria Constabulary. *The aim of the constabulary is to increase the reporting of hate incidents and crimes*

### Headlines/Key findings

- Throughout 2012-13 there were a total of 209 offences in Cumbria, a 22% fall from the previous year
- Compared to the previous year, numbers of offences have fallen in all districts, with the exception of Copeland where they have increased
- Barrow had the greatest rate of offences per 1,000 population, Eden had the lowest
- Race hate crime contributes to the majority of all hate crime (68.9% of the total), followed by sexual orientation (19.4% of the total)
- At ward levels numbers of crimes are relatively low, however, wards with the highest number of crimes in each of the districts are:  
**Allerdale:** St. John's, Christchurch, Moss Bay  
**Barrow:** Central, Hindpool, Hawcoat  
**Carlisle:** Castle, Currock, Dalston  
**Copeland:** Harbour, Hensingham, Cleator Moor North  
**Eden:** Penrith West, Penrith South, Penrith East  
**South Lakeland:** Kendal Fell, Kendal Stricklandgate, Windermere Applethwaite

### Conclusions

In the last year numbers of crimes have fallen in Cumbria; this is true for all districts with the exception of Copeland where numbers have increased. Carlisle district had the greatest fall in the number of offences.

### Data

**Table 1: Total Hate Crime in Cumbria and Districts for the last 3 financial years**

	2010-11	2011-12	2012-13	% change in the last year	Rate (per 1,000)
Cumbria	234	269	209	-22.0	0.4
Allerdale	32	36	30	-14.3	0.3
Barrow	50	47	47	0.0	0.7
Carlisle	86	100	54	-46.0	0.5
Copeland	23	18	31	72.2	0.4
Eden	8	16	12	-25.0	0.2
South Lakeland	35	52	35	-32.7	0.3

**Table 2: Hate Crime Type in Cumbria for the last 3 financial years**

Offence type	2010-11	2011-12	2012-13
Disability	13	16	20
Orientation	39	43	40
Racist	172	194	142
Religious	5	9	15
Transgender	5	7	6
All Hate (TOTAL)	234	269	206

## Domestic Violence and Sexual Offences

This section looks at data in relation to Domestic Violence incidents (all incidents recorded on the Force domestic abuse system). The source of this information is Cumbria Constabulary. Regional data has also been drawn from the British Crime Survey. The aim of the Constabulary and the wider Domestic Violence Partnership is to reduce the number of repeat incidents and repeats to MARAC, to increase the number of first time reports/ incidents and to reduce the number of repeat perpetrators.

### Headlines/Key findings

- Throughout 2012-13 there were 6,524 **domestic violence** incidents in Cumbria, a 1.6% increase from the previous year; there were 354 **sexual offences** in the county, a 12.4% decrease from the previous year
- Compared to the previous year, numbers of **domestic violence** incidents have increased in all districts with the exception of Carlisle and Eden where they have fallen; numbers of **sexual offences** have fallen in all districts with the exception of Allerdale and South Lakeland where they have increased
- Barrow district had the highest number and rate of **domestic violence** incidents per 1,000 population, while Eden had the lowest; Carlisle district had the highest number and rate of **sexual offences**, Copeland and Eden had the lowest rate
- Barrow had the greatest 'repeat victim rate' at 47.7%, while South Lakeland had the lowest at 32.8%
- Repeat victim rates have increased in Barrow, Carlisle and Copeland; rates have fallen in Allerdale, Eden and South Lakeland
  
- The wards with the highest number of **domestic violence** incidents in each of the districts are:
  - **Allerdale:** Moss Bay, St Michaels, Moorclose;
  - **Barrow:** Central, Hindpool, Ormsgill;
  - **Carlisle:** Castle, Currock, Botcherby
  - **Copeland:** Mirehouse, Harbour, Sandwith
  - **Eden:** Penrith South, Penrith West, Penrith North
  - **South Lakeland:** Kendal Kirkland, Kendal Fell, Kendal Underley
  
- The wards with the highest number of **sexual offences** in each of the districts are:
  - **Allerdale:** Moss Bay, Seaton, St. John's
  - **Barrow:** Hindpool, Walney South, Barrow Island
  - **Carlisle:** Castle, Currock, Harraby
  - **Copeland:** Egremont South, Harbour, Bootle
  - **Eden:** Kirkby Stephen, Kirkby Thore, Crosby Ravensworth
  - **South Lakeland:** Kendal Castle, Kendal Fell, Lakes Ambleside
- Offenders of **sexual offences** are typically male and aged 18-30years; victims are female and aged 0-17years
  
- There were 697 cases of those accessing Cumbria's Independent Domestic Violence Advisors (IDVA) Services, equating to an annual caseload of 70 cases per FTE; an increase of 295 cases compared to the previous year. Of those, 92% were female; 95% were White British or Irish; 97% were heterosexual; and 36% are aged 21 – 30 years. 59% of clients have children; 36% of clients are 'high risk'; 64% experience physical abuse; 75% experience jealous and controlling behaviour; 13% experience sexual abuse; and 57% experience harassment and stalking; 3% are misusing drugs; 10% are misusing alcohol; 28% have mental health issues

## Conclusions

Compared to the previous year, numbers of **domestic violence** incidents have increased in Cumbria. Numbers of incidents have increased in all districts with the exception of Carlisle and Eden where they have fallen. Numbers have increased over a 3 year period in the county. Repeat victim rates are increasing. Numbers of **sexual violence** incidents have fallen in the last year in all districts with the exception of Allerdale and South Lakeland where they have increased; over a 3 year period numbers have fallen in the county, but have increased in Allerdale, Carlisle and South Lakeland.

DRAFT

## Data . Table 1: Levels of Violence Against Women and Girls in Cumbria

<b>Do you know how many women and girls are victims of violence in your area?</b>	
<b>Based on regional data from the British Crime Survey, the estimate for an area this size would be that:</b>	
Women and girls aged 16-59 have been a victim of domestic abuse in the past year	<b>15,247</b> (margin of error +/- 3,528)
Women and girls aged 16-59 have been a victim of a sexual assault in the past year	<b>5,249</b> (margin of error +/- 2,999)
Women and girls aged 16-59 have been a victim of stalking in the past year	<b>29,068</b> (margin of error +/- 4,546)

(These figures are estimates based on the population size specified for Cumbria and the BCS prevalence rate for the North West region. They are only indicative of the level of VAWG, and should serve as one of several sources on which to assess the need for VAWG services in the area).

**Table 2: Domestic Violence Incidents in Cumbria for the last 3 financial years.**  
(DV Repeats - all domestic abuse incidents where the victim was a victim in the 12 months prior to the incident)

<b>Force</b>	<b>2010-11</b>	<b>2011-12</b>	<b>2012-13</b>	<b>change in the last year</b>
Incidents	6,455	6,424	6,524	1.6%
Repeat incidents	2812	2840	2,920	2.8%
Repeat Victim Rate	43.6	44.2	44.8	0.6

**Table 3: Domestic Violence Incidents in Allerdale for the last 3 financial years**

<b>Allerdale</b>	<b>2010-11</b>	<b>2011-12</b>	<b>2012-13</b>	<b>change in the last year</b>
Incidents	1,305	1,398	1,511	8.1%
Repeat incidents	571	682	714	4.7%
Repeat Victim Rate	43.8	48.8	47.3	-1.5

**Table 4: Domestic Violence Incidents in Barrow for the last 3 financial years**

<b>Barrow</b>	<b>2010-11</b>	<b>2011-12</b>	<b>2012-13</b>	<b>change in the last year</b>
Incidents	1,376	1,224	1,292	5.6%
Repeat incidents	650	544	616	13.2%
Repeat Victim Rate	47.2	44.4	47.7	3.3

**Table 5: Domestic Violence Incidents in Carlisle for the last 3 financial years**

<b>Carlisle</b>	<b>2010-11</b>	<b>2011-12</b>	<b>2012-13</b>	<b>change in the last year</b>
Incidents	1,493	1,619	1,477	-8.8%
Repeat incidents	633	705	687	-2.6%
Repeat Victim Rate	42.4	43.6	46.5	2.9

**Table 6: Domestic Violence Incidents in Copeland for the last 3 financial years**

<b>Copeland</b>	<b>2010-11</b>	<b>2011-12</b>	<b>2012-13</b>	<b>change in the last year</b>
Incidents	1,205	1,122	1,171	4.4%
Repeat incidents	571	513	550	7.2%
Repeat Victim Rate	47.4	45.7	47.0	1.3

**Table 7: Domestic Violence Incidents in Eden for the last 3 financial years**

Eden	2010-11	2011-12	2012-13	change in the last year
Incidents	249	270	264	-2.2%
Repeat incidents	71	100	88	-12.0%
Repeat Victim Rate	28.5	37.0	33.3	-3.7

**Table 8: Domestic Violence Incidents in South Lakeland for the last 3 financial years**

South Lakeland	2010-11	2011-12	2012-13	change in the last year
Incidents	827	791	809	2.3%
Repeat incidents	316	296	265	-10.5%
Repeat Victim Rate	38.2	37.4	32.8	-4.6

**Table 9: Sexual Offences in Cumbria and Districts for the last 3 financial years**

	2010-11	2011-12	2012-13	% change in the last year
Cumbria	383	404	354	-12.4
Allerdale	69	58	70	20.7
Barrow	72	60	48	-20.0
Carlisle	89	124	91	-26.6
Copeland	59	54	41	-24.1
Eden	34	49	29	-40.8
South Lakeland	60	59	75	27.1

**Table 10: Cumbria Integrated, IDVA Service, Coordinated Action Against Domestic Abuse (CAADA) Insights Service Report, 12 months to July 2013**

Cumbria	12 months to July 2013
Intake forms (number of cases opened)	697
Annual caseload per FTE	70
Exit forms (number of cases leaving the service)	667
Criminal & Civil Justice forms	358
Repeat clients	21%
Gender of clients: Female	92%
Gender of clients: Male	8%
Ethnic origin of clients: White British or Irish	95%
Clients with children	59%
Social Services involvement	23%
Police primary referral route	62%
Age: <18years	2%
Age: 18-20years	6%
Age: 21-30years	36%
Age: 31-40years	26%
Age: 41-50years	18%
Age: 51-60years	7%
Age: 61+years	4%
Proportion of clients with a financial problem	25%
Proportion of clients with mental health issues	28%
Proportion of clients attempting or threatening suicide	13%
Proportion of clients self-harming	11%
Proportion of clients misusing drugs	3%
Proportion of clients misusing alcohol	10%
Average length of abusive relationship	2 years
Proportion of clients 'high risk'	36%
Proportion of clients experiencing physical abuse	64%
Proportion of clients experiencing jealous and controlling behaviour	75%
Proportion of clients experiencing sexual abuse	13%
Proportion of clients experiencing harassment and stalking	57%

## Offender and Re-offending data

This section looks at data in relation to Adult Offending and Re-offending. The source of the Offending information is the Cumbria Probation Trust; and the source of the Re-offending data is the Ministry of Justice. The aim of the Probation Trust is to protect the public and to reduce reoffending.

To note: Local Delivery Units (LDU); North & West LDU: Carlisle, Penrith and West Cumbria Probation Offices; South LDU: Barrow and Kendal Probation Offices.

The order/licence/custody categories are: Community Orders: sentences of the court which are managed in the community. Licences: adults custodial sentences of 12 months or more which are then subject to supervision in the community upon release from custody; youths: releases from Young Offenders Institutions. Custody: adult sentences of 12 months or more and sentences to Young Offenders Institutions, who are in custody.

### Headlines/Key findings

- In March 2013 there were a total of 1,919 registered Offenders
- Compared to the previous year the number of cases fell by 32 from 1951 to 1,919
- Re-offending rates in Cumbria have fallen over the last year and over a 3 year period
- Over the 3 year period 'actual' rates of reoffending have been below the 'predicted' rates
- In Cumbria 87.5% of offenders are male
- Almost half of offenders (40.2%) are aged between 20-29 years
- 96.8% of offenders are of white origin
- There is a greater proportion of Offenders in the North & West LDU (65.5%) than the South (34.5%), however, the population is much greater in the North & West
- Violence accounts for the greatest proportion of the total offences in Cumbria (26.3%)
- Thefts account for 12.5%
- Drugs account for 9.2%
- 21.6% of offenders show evidence of domestic abuse
- 20.4% of offenders have parental responsibility

### Data

**Table 1: Profile of Offender Caseload at 31st March 2013, Cumbria Probation Trust**

Gender:	North & West LDU			South LDU			Cumbria Probation Trust		
	Community Order	Licence	Custody	Community Order	Licence	Custody	Community Order	Licence	Custody
Female	122	20	14	65	5	14	187	25	28
Male	563	219	318	325	105	149	888	324	467
<b>Total</b>	<b>685</b>	<b>239</b>	<b>332</b>	<b>390</b>	<b>110</b>	<b>163</b>	<b>1075</b>	<b>349</b>	<b>495</b>

Age:	North & West LDU			South LDU			Cumbria Probation Trust		
	Community Order	Licence	Custody	Community Order	Licence	Custody	Community Order	Licence	Custody
18-19yrs	22	1	7	12	1	5	34	2	12
20-29yrs	311	83	91	168	46	48	479	129	139
30-39yrs	181	74	109	102	27	48	283	101	157
40-49yrs	105	44	64	67	20	36	172	64	100
50-59yrs	47	27	37	31	14	14	78	41	51
60-69yrs	19	7	18	8	2	8	27	9	26
70-80yrs	0	3	6	2	0	4	2	3	10
<b>Total</b>	<b>685</b>	<b>239</b>	<b>332</b>	<b>390</b>	<b>110</b>	<b>163</b>	<b>1075</b>	<b>290</b>	<b>495</b>



Racial Origin:	North & West LDU			South LDU			Cumbria Probation Trust		
	Community Order	Licence	Custody	Community Order	Licence	Custody	Community Order	Licence	Custody
Asian	2	1	6	1		2	3	1	8
Black	1			1	1	1	2	1	1
Mixed	3	2	3	4	1	2	7	3	5
Other			1	2			2		1
White	674	234	317	369	108	156	1043	342	473
Refused							0	0	0
Not recorded	5	2	5	13		2	18	2	7
<b>Total</b>	<b>685</b>	<b>239</b>	<b>332</b>	<b>390</b>	<b>110</b>	<b>163</b>	<b>1075</b>	<b>349</b>	<b>495</b>

**Table 2: Probation commencements by offence type (at Trust and Office level), 2012-2013**

	Cumbria	Barrow	Carlisle	Kendal & Penrith	West Cumbria
Violence	555	139	161	80	175
Theft	264	52	111	23	78
Drugs	194	40	53	31	70
Public Order	184	43	75	21	45
Breach	171	32	66	11	62
Motoring	144	22	45	29	48
Burglary	127	24	58	13	32
Criminal Damage	90	16	23	17	34
Other	169	29	66	29	45
Fraud/Forgery	85	15	27	19	24
Sexual	65	13	25	13	14
Theft Vehicle	54	9	24	7	14
Dangerous Driving	8	3	1	3	1
<b>Total</b>	<b>2110</b>	<b>437</b>	<b>735</b>	<b>296</b>	<b>642</b>

Note: Data is combined for Kendal and Penrith, the data is not available for the individual offices)

**Table 3: Proportion of probation commencements by offence type, 2012-2013**

	Cumbria	Barrow	Carlisle	Kendal & Penrith	West Cumbria
Violence	26.3%	31.8%	21.9%	27.0%	27.3%
Theft	12.5%	11.9%	15.1%	7.8%	12.1%
Drugs	9.2%	9.2%	7.2%	10.5%	10.9%
Public Order	8.7%	9.8%	10.2%	7.1%	7.0%
Breach	8.1%	7.3%	9.0%	3.7%	9.7%
Motoring	6.8%	5.0%	6.1%	9.8%	7.5%
Burglary	6.0%	5.5%	7.9%	4.4%	5.0%
Criminal Damage	4.3%	3.7%	3.1%	5.7%	5.3%
Other	8.0%	6.6%	9.0%	9.8%	7.0%
Fraud/Forgery	4.0%	3.4%	3.7%	6.4%	3.7%
Sexual	3.1%	3.0%	3.4%	4.4%	2.2%
Theft Vehicle	2.6%	2.1%	3.3%	2.4%	2.2%
Dangerous Driving	0.4%	0.7%	0.1%	1.0%	0.2%

Note: Data is combined for Kendal and Penrith, the data is not available for the individual offices)

**Table 4: Probation commencements with incidents of domestic violence/partner abuse, 2012-13**

	Evidence of Domestic Violence	
	Number	% of all offenders
Cumbria	389	21.6%
Barrow	107	27.0%
Carlisle	139	21.8%
Kendal & Penrith	46	18.0%
West Cumbria	97	18.8%

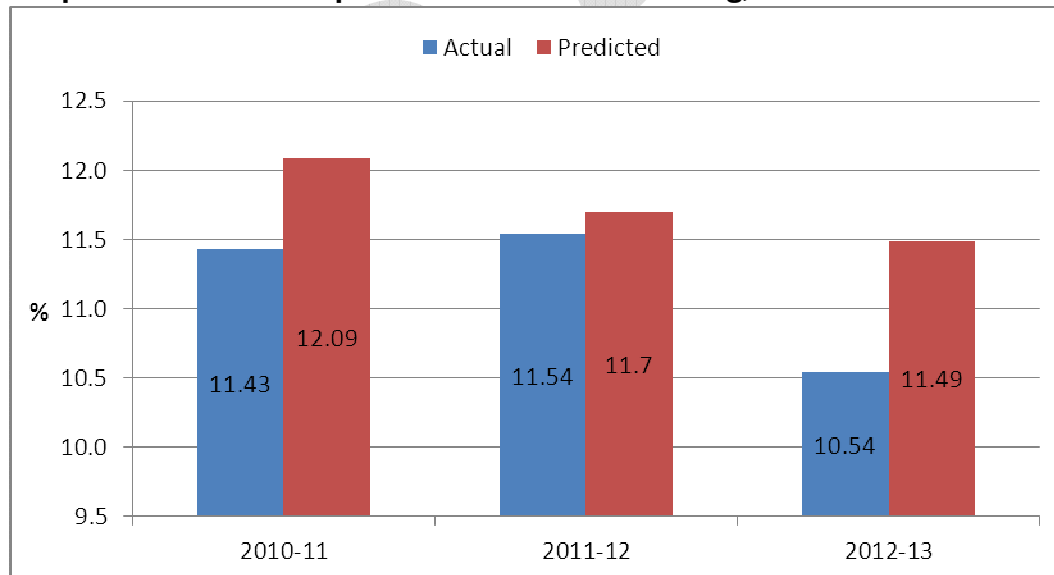
**Table 5: Probation commencements with identified evidence of parental responsibility data, 2012-13**

	Evidence of parental responsibility	
	Number	% of all offenders
Cumbria	369	20.4%
Barrow	101	25.5%
Carlisle	113	17.8%
Kendal & Penrith	53	20.7%
West Cumbria	102	19.7%

**Table 6: Local adult reoffending rates over 3 years, Probation area, Ministry of Justice**

Cumbria Probation Trust	2010-11	2011-12	2012-13
Cohort size (combining four quarters of probation caseload data) <sup>1</sup>	5,654	5,426	5,322
Actual rate of reoffending	11.43%	11.54%	10.54%
Predicted rate of reoffending	12.09%	11.70%	11.49%
% difference from baseline <sup>2</sup>	-5.50%	-1.42%	<b>-8.25%</b>

**Graph I: Actual rates v predicted rates of reoffending, 2009-10 – 2012-13**



<sup>1</sup> Note that data will not exactly aggregate from the local authority level to the Probation Trust level, as there are a small (roughly 1%) number of offenders who could not be assigned to a local authority as they have no postcode data. There are also a small (again roughly 1%) number of offenders whose postcode is in a local authority which is not in the probation trust where they are on the caseload.

<sup>2</sup> Data in bold illustrate that the change in re-offending from the baseline is statistically significant.

## Youth Offending

This section looks at data in relation to young offenders (those aged 10-17 years) who enter the youth offending system. The source of the information is Cumbria Youth Offending Service and Ministry of Justice.

### Headlines/Key findings

- Throughout 2012-13, there were 442 young offenders, a reduction of 32.3% from the previous year
- 373 young people entered the Youth Justice System for the first time, a fall of 25.4% from the previous year
- A total of 1,548 offences were committed
- 33 young people received a custodial (prison) sentence, a 17.5% reduction from the previous year

**Table 1: First Time Entrants, Cumbria Youth Offending Service**

	2009-10	2010-11	2011-12	change in the last year
First Time Entrants	684	500	373	-25.4%

**Table 2: Overall Youth Crime, Cumbria Youth Offending Service**

	2010-11	2011-12	2012-13	change in the last year
Number of Offenders	1,035	653	442	-32.3%
Number of Offences	1,940	1,548		-20.2%

**Table 3: Re-offending rates, Cumbria Youth Offending Service, 2010-11**

	2009-10	2010-11	Change from baseline
Frequency rate	0.91	0.90	-0.01
Binary rate	34.8%	34.0	-0.8% (% point change)

**Table 4: Offence data, Youth Offending Service, Youth Justice Board**

	2010-11	2011-12	Change in last year
Total Offences MIS report 2000	1,940	1,548	-20%
Number of Pre-court disposals	600	197	-67%
Number of First-tier disposals	662	571	-14%
Number of Community disposals	130	225	73%
Number of Custody disposals	36	39	8%
Total Disposals	1,428	1,032	-28%

**Table 5: Offending population, Youth Justice Board**

	2010-11	2011-12	Change in last year
Cumbria	1,035	632	-38.9%

**Table 6: Outcomes, Youth Justice Board**

	2011-12	2011-12	Change in last year
First Time Entrants	373		-113
Custodial sentences	40	33	-17.5

## Cumbria Drug & Alcohol Services (CDAS) data

This section looks at data in relation to drug users who come into contact with the Cumbria Drugs and Alcohol Services (CDAS). The primary source of this information is CDAS. In addition to this we have also used data drawn from the Cumbria Young Persons Alcohol & Tobacco Consumption Survey, Trading Standards

### Headlines/Key findings

- Throughout 2012-13, 2,642 substance users came into contact with CDAS (an increase of 149 users from 2,493 in 2011-12)
- In Cumbria 66% of users are male, 34% are female
- Most users are aged between 30-39years
- 98% of users are White British
- 66% of service users are accessing services because of drugs misuse; 34% are accessing services because of alcohol misuse (an increase of alcohol users compared to the previous year)
- **Allerdale:** 486 service users came into contact with CDAS (an increase of 86 users from the previous year). 49% of those use heroin as their main drug; 31% use alcohol. Most users are male and aged between 35-39years.
- **Barrow:** 640 service users came into contact with CDAS (an increase of 81 users from the previous year). 54% of those use heroin as their main drug; 30% use alcohol. Most users are male and aged between 35-39years.
- **Carlisle:** 673 service users came into contact with CDAS (an increase of 89 users from the previous year). 58% of those use heroin as their main drug; 30% use alcohol. Most Users are male and aged between 35-39 years.
- **Copeland:** 327service users came into contact with CDAS (an increase of 85 users from the previous year). 41% of those use heroin as their main drug; 39% use alcohol (an 11% increase from the previous year). Most Users are male and aged between 30-34 years.
- **Eden:** 212 service users came into contact with CDAS (an increase of 40 users from the previous year). 50% (increase) of those use alcohol as their main drug; 33% use heroin. Most users are male and aged between 30-34 years.
- **South Lakeland:** 337 service users came into contact with CDAS (an increase of 78 users from the previous year). 38% use heroin as their main drug; 42% use alcohol (increase). Most users are male and aged between 35-39 years
- 30% of drug users using the service have children; 43% of alcohol users using the service have children

### Cumbria Young Persons Alcohol & Tobacco Survey 2013

- The survey of 14-17 years olds was carried out between January and April 2013
- 1,363 completed surveys were received
- Compared to 2011 results, 14-17 year olds are drinking less often or not at all
- Proportions of those claiming they never drink alcohol has increased from 12% in 2011 to 25% in 2013
- Levels of binge drinking have fallen from 19% in 2011 to 9% in 2013
- There has been a fall in the number of 14-17 year olds drinking in pubs/clubs and outside on streets and in parks
- 27% of respondents are aware of drinking dens and/or party houses
- Respondents who drink alcohol mostly obtain it from their parents/guardians/family
- 3% of respondents claim to have fake ID, below the regional average of 7% (the internet is the most common source for fake ID)
- 17% of respondents claim they drink alcohol because there is nothing else to do
- 69% of respondents think that getting drunk is fun
- 54% of respondents think that it is normal to get drunk
- 16% of respondents claim they have been violent whilst drunk
- 36% of respondents are not worried about the long-term health effects

## Data

**Table 1: Gender of Drug Users who have come into contact with CDAS**

	2012-13	
Gender	Number	%
Male	1,753	66.4
Female	889	33.6
<b>Total</b>	<b>2,642</b>	

**Table 2: Ethnicity of Drug Users who have come into contact with CDAS**

	2012-13	
Ethnicity	Number	%
White British	2,590	98.0%
White Irish	6	0.2%
Other White	29	1.1%
White & Black Caribbean	2	0.1%
White & Black African	1	0.0%
White & Asian	1	0.0%
Other Mixed	0	0.0%
Indian	0	0.0%
Pakistani	0	0.0%
Bangladeshi	1	0.0%
Other Asian	4	0.2%
Caribbean	0	0.0%
African	0	0.0%
Other Black	2	0.1%
Chinese	1	0.0%
Other	5	0.2%
Not Stated	0	0.0%
Missing ethnicity code	0	0.0%

**Table 3: Age of Drug & Alcohol Users who came into contact with CDAS**

	2012-13	
Age group at mid-point (End September)	Number	%
18-24 years	186	7.0%
25-29 years	326	12.3%
30-34 years	466	17.6%
35-39 years	524	19.8%
40-44 years	404	15.3%
45-49 years	322	12.2%
50-54 years	203	7.7%
55-59 years	108	4.1%
60-64 years	61	2.3%
65+ years	42	1.6%

Table 4: Main and Secondary drugs used by Drug Users who have come into contact with CDAS

	SECOND DRUG																				
MAIN DRUG	Heroin	Methadone	Other Opiates	Benzodiazepines	Amphetamines	Cocaine	Crack	Hallucinogens	Ecstasy	Cannabis	Solvents	Barbiturates	Major Tranquilisers	Anti-depressants	Alcohol	Other Drugs	Poly Drug	Prescription Drugs	Misuse Free	N/A	Total
Heroin		90	34	218	66	14	34		1	57					107	2	3	2	5	666	1,299
Methadone	4		1	13											4					36	58
Other Opiates	5	1		15	5		1			6					9					76	118
Benzodiazepines	3		2							3					6					28	42
Amphetamines	4		1	4		3				5					6					36	59
Cocaine				1	2				1	10					8					13	35
Crack					1	1															2
Hallucinogens			1			1				1					1						4
Ecstasy										1										1	2
Cannabis			1	5	2	4		1	2		1			1	34	1		1		53	106
Solvents										1											1
Barbiturates																					
Major Tranquilisers																					
Anti-depressants															1						1
Other Drugs				1																2	3
Poly Drug																					
Prescription Drugs				1						2										4	7
Misuse free																					
Total	16	91	40	258	76	23	35	1	4	86	1			1	176	3	3	3	5	915	1,737

## Alcohol

This section looks at data in relation to Alcohol, alcohol related mortality, hospital admissions, crime, violent crime and binge drinking. The source of the information is from the Local Alcohol Profiles for England (LAPE) produced by the North West Public Health Observatory.

### Headlines/Key findings

- In Cumbria the rate of **alcohol specific mortality for males** is below the national and regional average, however, in Barrow and Carlisle it is above the national average. **Alcohol specific mortality for females** is above the national average in Cumbria, Allerdale, Barrow and South Lakeland
- In Cumbria the rate of **under 18s admitted to hospital with alcohol specific conditions** is above national and regional rates. Rates in Allerdale, Barrow and Copeland are also above national and regional rates
- In Cumbria **admission episodes for alcohol-attributable conditions** is above the national average; this is reflected in the rates for Allerdale, Barrow, Carlisle and Copeland
- In Cumbria the rate of those **engaging in binge drinking** is above the national average but below the regional average; this is reflected in all districts with the exception of Barrow
- In Cumbria the rate of **recorded crime attributable to alcohol** is below the national and regional average, however, in Barrow and Carlisle rates are above both national and regional averages
- In Cumbria the rate of **violent crimes attributable to alcohol** is below the national and regional average, however, rates in Barrow and Carlisle are above national and regional rates

### Conclusion

Rates of **Alcohol specific mortality for males** have fallen in Cumbria. This is true for Allerdale, Copeland, Eden and South Lakeland, however, rates in Barrow and Carlisle have increased.

Rates of **Alcohol specific mortality for females** have fallen in Cumbria. This is true for Allerdale, Barrow, Carlisle and Copeland. Rates in Eden and South Lakeland have increased.

Rates of **Under 18s admitted to hospital with alcohol specific conditions** are falling in Cumbria. This is true for Allerdale, Barrow, Carlisle, Eden and South Lakeland; in Copeland rates are increasing.

Rates of **Admission episodes for alcohol-attributable conditions** have increased in Cumbria. This is true for Barrow however, rates have increased in all other districts.

Rates of **Crime attributable to alcohol** have fallen in Cumbria, this is true for Carlisle and Copeland. Rates have increased in Allerdale, Barrow, Eden and South Lakeland.

Rates of **Violent crimes attributable to alcohol** in Cumbria have remained the same. Rates have increased in Allerdale, Barrow, Eden and South Lakeland. Rates have fallen in Carlisle and Copeland.

## Data

**Table 1: Alcohol specific mortality: Males, all ages, DSR per 100,000 population**

	2006-2008	2007-2009	2008-2010	Number of deaths 2008-2010
Cumbria	10.87	11.53	11.25	95
Allerdale	10.12	12.72	10.71	17
Barrow	19.11	23.55	<b>27.05</b>	32
Carlisle	12.21	13.99	<b>14.27</b>	24
Copeland	11.63	8.91	8.13	10
Eden	4.66	4.89	2.82	3
South Lakeland	7.76	5.35	4.88	9
North West	18.51	19.01	18.51	1,982
England	13.12	13.06	13.16	10,579

**Table 2: Alcohol specific mortality: Females, all ages, DSR per 100,000 population**

	2006-2008	2007-2009	2008-2010	Number of deaths 2008-2010
Cumbria	7.66	7.69	6.62	56
Allerdale	9.04	8.67	8.10	14
Barrow	11.54	12.02	8.10	9
Carlisle	9.88	7.93	5.67	9
Copeland	5.96	6.04	3.26	5
Eden	3.98	4.79	5.59	4
South Lakeland	4.87	6.03	7.95	15
North West	9.98	9.93	9.82	1,082
England	6.12	6.12	6.04	5,029

**Table 3: Under 18s admitted to hospital with alcohol specific conditions: Persons, crude rate per 100,000 population**

	2006/07- 2008/09	2007/08- 2009/10	2008/09- 2010/11	Number of under 18s admitted 2008/09- 2010/11
Cumbria	111.71	103.21	96.38	283
Allerdale	156.00	144.90	132.23	75
Barrow-in-Furness	109.55	104.51	103.98	47
Carlisle	107.70	110.41	85.25	52
Copeland	167.90	121.89	136.43	57
Eden	32.87	43.09	40.15	12
South Lakeland	74.48	71.88	67.75	40
North West	113.33	102.81	93.71	4,165
England	66.41	61.81	55.79	18,444



**Table 4: Admission episodes for alcohol-attributable conditions (previously NI39): All ages, DSR per 100,000 population**

	2009/10	2010/11	2011/12	Number of admission episodes 2011/12	% change in the last year
Cumbria	1896.02	1924.33	2076	13,710	8%
Allerdale	1957.06	1972.37	1956	2,536	-1%
Barrow-in-Furness	2528.12	2464.45	2560	2,190	4%
Carlisle	2021.69	2047.67	2403	3,197	17%
Copeland	2120.89	2185.33	2314	2,089	6%
Eden	1367.06	1404.29	1663	1,221	18%
South Lakeland	1433.26	1530.67	1617	2,477	6%
North West	2295.19	2425.49	2413	199,855	-1%
England	1742.78	1895.18	1974	1,220,293	4%

**Table 5: Synthetic estimate of the percentage of the population aged 16 years and over who report engaging in binge drinking**

	2007-2008	Lower 95% CI	Upper 95% CI
Cumbria	21.6	20.1	23.2
Allerdale	22.0	18.6	25.7
Barrow-in-Furness	18.7	15.5	22.4
Carlisle	22.4	19.1	26.0
Copeland	21.7	17.6	26.5
Eden	22.8	18.4	28.0
South Lakeland	21.9	18.8	25.3
North West	23.3	21.2	25.5
England	20.1	19.4	20.8

**Table 6: Recorded crime attributable to alcohol: Persons, all ages, crude rate per 1,000 population**

	2009/10	2010/11	2011/12	Number recorded crime 2011/12
Cumbria	5.80	5.46	5.44	2,688
Allerdale	5.54	5.13	5.21	491
Barrow-in-Furness	7.66	7.09	7.10	502
Carlisle	7.98	7.64	7.60	795
Copeland	5.33	5.57	4.94	343
Eden	3.72	3.28	3.48	180
South Lakeland	3.90	3.47	3.63	377
North West	7.76	7.17	6.73	46,684
England	8.01	7.58	7.02	366,791

**Table 7: Violent crimes attributable to alcohol: Persons, all ages, crude rate per 1,000 population**

	2009/10	2010/11	2011/12	Number violent crimes 2011/2012
Cumbria	4.94	4.71	4.71	2,330
Allerdale	4.59	4.29	4.41	415
Barrow-in-Furness	6.75	6.08	6.43	454
Carlisle	7.00	6.80	6.63	<b>693</b>
Copeland	4.61	4.93	4.33	301
Eden	2.99	2.72	2.87	149
South Lakeland	3.16	2.88	3.07	318
North West	5.46	5.16	4.93	34,183
England	5.79	5.46	5.03	262,791

DRAFT

## Killed or Seriously Injured (KSIs)

This section looks at data in relation to KSIs which are defined as being the number of casualties who were killed or seriously injured in road traffic collisions. The source of the information is Cumbria County Council (Department for Transport).

### Headlines/Key findings

- Throughout 2012 there were 196 KSI incidents in Cumbria, 53 less than the previous year equating to a 21.3% decrease, and 15.9% decrease over 3 years
- Compared to the previous year numbers of incidents have fallen in all districts with the exception of Carlisle where they have increased
- Carlisle had the highest number of KSIs, Eden had the highest rate per 1,000 population
- Barrow had the lowest number of KSIs, however South Lakeland had the greatest proportional fall in the last year

### Conclusion

In Cumbria and districts numbers of KSIs have fallen in the last year with the exception of Carlisle where they have increased.

**Table 1: KSIs in Cumbria and Districts for the last 3 calendar years**

	2010	2011	2012	% change in the last year
Cumbria	233	249	196	-21.3%
Allerdale	50	63	40	-36.5%
Barrow	18	14	13	-7.1%
Carlisle	37	42	48	14.3%
Copeland	20	31	30	-3.2%
Eden	52	42	30	-28.6%
South Lakeland	56	57	35	-38.6%

**Table 2: KSIs by user group category, Cumbria, 2012**

	2010	2011	2012	% change in the last year
All KSIs	233	249	196	-21.3%
Child KSI	35	18	10	-44.4%
All fatal	30	30	30	0.0%
Slight	1586	1506	1511	0.3%
Total casualties	1819	1755	1707	-2.7%

## Fire Service

This section looks at data in relation to deliberately started Fire Incidents. The source of this information is Cumbria Fire Service.

The information is broken down by primary and secondary fires (primary - including all fires in buildings, vehicles and outdoor structures or any fire involving casualties, rescues or fires attended by five or more appliances; secondary fires are fire incidents that did not occur at a primary location, was not a chimney fire in an occupied building, did not involve casualties (otherwise categorised as a Primary incident) and was attended by four or fewer appliances). Please note that numbers of arson offences are included in the Criminal Damage which are reported in this Assessment.

### Headlines/Key findings

- Throughout 2012-13 there were a total of 1,664 fire incidents in Cumbria
- There were a total of 663 deliberate fire incidents in the county, which accounted for 39.8% of all fire incidents
- Compared to the previous year the number of all fire incidents had fallen by 8.7%; the number of deliberate fire incidents had fallen by 22.1%
- Over the last 3 years, the number of incidents had fallen across Cumbria and in all of the districts
- Allerdale district had the greatest number of incidents and the greatest rate per 1,000 population
- Eden district had the lowest number of incidents and the lowest rate per 1,000 population

The wards with the highest number of deliberate fire incidents are as follows:

- **Allerdale:** St Michaels, Moss Bay, Moorclose; **Barrow:** Central, Ormsgill, Hindpool; **Carlisle:** Castle, Currock, Botcherby; **Copeland:** Distington, Harbour, Mirehouse; **Eden:** Hesket, Brough/Penrith West, Alston Moor/Penrith South; **South Lakeland:** Arnside & Beetham, Kendal Far Cross, Ullswater/Kirby Lonsdale

### Conclusions

The general trend for all fires (both accidental and deliberate) is downward as it is nationally.

### Data

**Table 1: All fires incidents in Cumbria and Districts for the last 3 financial years**

	2010-11			2011-12			2012-13		
	Accidental	Deliberate	Total	Accidental	Deliberate	Total	Accidental	Deliberate	Total
<b>Allerdale</b>	166	265	431	161	253	414	182	231	413
<b>Barrow</b>	157	240	397	126	156	282	122	121	243
<b>Carlisle</b>	191	358	549	193	224	417	228	141	369
<b>Copeland</b>	129	160	289	117	119	236	120	95	215
<b>Eden</b>	168	29	197	151	27	178	160	12	172
<b>South Lakeland</b>	213	87	300	224	72	296	189	63	252
<b>Cumbria</b>	1,024	1,139	2,163	972	851	1,823	1,001	663	1,664

**Table 2: Deliberate fire incidents in Cumbria and Districts for the last 3 financial years**

	2010-11			2011-12			2012-13		
	Primary	Secondary	Total	Primary	Secondary	Total	Primary	Secondary	Total
Allerdale	58	207	265	45	208	253	50	181	231
Barrow	28	212	240	27	129	156	19	102	121
Carlisle	70	288	358	53	171	224	37	104	141
Copeland	33	127	160	34	85	119	18	77	95
Eden	11	18	29	10	17	27	5	7	12
South Lakeland	19	68	87	17	55	72	18	45	63
Cumbria	219	920	1,139	186	665	851	147	516	663

**Table 3: All (accidental and deliberate) fire incidents - change over time**

	Numerical change 3 years	% change 3 years	Numerical change 1 year	% change 1 year
Allerdale	-18	-4.2%	-1	-0.2%
Barrow	-154	-38.8%	-39	-13.8%
Carlisle	-180	-32.8%	-48	-11.5%
Copeland	-74	-25.6%	-21	-8.9%
Eden	-25	-12.7%	-6	-3.4%
South Lakeland	-48	-16.0%	-44	-14.9%
Cumbria	-499	-23.1%	-159	-8.7%

**Table 4: Deliberate fire incidents - change over time**

	Numerical change 3 years	% change 3 years	Numerical change 1 year	% change 1 year
Allerdale	-34	-12.8%	-22	-8.7%
Barrow	-119	-49.6%	-35	-22.4%
Carlisle	-217	-60.6%	-83	-37.1%
Copeland	-65	-40.6%	-24	-20.2%
Eden	-17	-58.6%	-15	-55.6%
South Lakeland	-24	-27.6%	-9	-12.5%
Cumbria	-476	-41.8%	-188	-22.1%

## British Crime Survey

The British Crime Survey (BCS) is a face to face survey in which adults living in private households are asked about their experiences of crime. The results are only available at County level and percentage responses for Cumbria to questions posed are shown in the table below:

	Mar-12	Mar-13	Trend	MSG Rank (1 = best 8 = worst)
Percentage who think their local police do a good or excellent job	68.3%	67.7%	Worse	1
Police or Council dealing with Crime	65.4	63.9	Worse	1
Reliable	62.5	62.3	Worse	1
Respect	89.7	89.6	Worse	2
Fair Treatment	67.8	65.3	Worse	4
Community Understanding	79.6	79.3	Worse	1
Police deal with community priorities	70.0	65.8	Worse	1
Confidence	81.5	80.4	Worse	1
Risk of crime (household)	9.7	10.4	Worse	4
Risk of crime (personal)	4.5	2.2	Better	1

(Note: MSG = Most Similar Group)

## Public Consultation Survey

The Annual Public Consultation Survey is a county wide survey and was conducted during August 2012 using a number of different sampling methods.

In total, 2,430 surveys were distributed to Members of Community Voice. The survey was also made available online.

### Headlines/Key findings

- 1,033 surveys were returned, a response rate of 42.5%
- 355 surveys were filled in online, bringing the total number of completed surveys to 1,388
- In Cumbria the greatest concern is speeding vehicles followed by bogus callers / nuisance sales
- In Allerdale the greatest concern is speeding vehicles followed by dangerous driving
- In Barrow the greatest concern is speeding vehicles (& rubbish/litter) followed by bogus callers / nuisance sales
- In Carlisle the greatest concern is speeding vehicles followed by bogus callers / nuisance sales
- In Copeland the greatest concern is speeding vehicles followed by dangerous driving
- In Eden the greatest concern is speeding vehicles followed by dangerous driving
- In South Lakeland the greatest concern is speeding vehicles followed by bogus callers / nuisance sales

**Chart 1: Graph showing the most important local concerns**

(Question 5 – Thinking about your local neighbourhood, please look at the following list and put an X next to your top 5 concerns).

