

Report to Executive

Agenda
Item:

A.1

Meeting Date: 7th April 2014
Portfolio: Communities and Housing
Key Decision: Yes: Recorded in the Notice Ref:KD.02/14
Within Policy and Budget Framework YES
Public / Private Public

Title: CARLISLE AND EDEN COMMUNITY SAFETY PARTNERSHIP
ANNUAL PLAN 2014/15
Report of: The Deputy Chief Executive
Report Number: SD 04/14

Purpose / Summary:

The Carlisle and Eden Community Safety Partnership (CSP) have developed their Partnership Plan for 2014/15 (Appendix 1) using data from the Community Safety Strategic Assessment.

The purpose of this report is to re-present the CSP's Partnership Plan for consideration and approval by Carlisle City Council's Executive following consultation with the Community Overview and Scrutiny Panel.

Recommendations:

It is recommended that Executive consider and approve the plan and recommend it to Carlisle City Council for adoption.

Tracking

Executive:	10 th March 2014 & 7 th April 2014
Overview and Scrutiny:	27 th March 2014
Council:	29 th April 2014

1. BACKGROUND

- 1.1** The Crime & Disorder Act 1998 placed statutory obligations on local authorities and the police to act in co-operation with the probation service, health authorities and other relevant agencies, and to work together to develop and implement a partnership plan for tackling crime and disorder in their area.

The legislation requires local Community Safety Partnerships to produce a plan setting out how it intends to tackle crime and disorder and allowing the development of strategies to tackle short, medium and long-term priorities.

The attached plan outlines these priorities for 2014-15 and is supported by a series of actions plans being delivered by the task groups of the CSP.

2. PROPOSALS

- 2.1** It is proposed that the CSP Partnership Plan is considered by Executive and after consultation approved by full Council.

3. CONSULTATION

- 3.1** The Partnership Plan has already been circulated to all individual partners within the Carlisle and Eden Community Safety Partnership's and considered by their Leadership Group. Views and comments have also been sought, and received from the City Council's Community Overview and Scrutiny panel as the plan has been developed.

4. CONCLUSION AND REASONS FOR RECOMMENDATIONS

- 4.1** The Carlisle and Eden Community Safety Partnership (CSP) have developed their Partnership Plan for 2014/15 (Appendix 1) using data from the Community Safety Strategic Assessment.
- 4.2** The plan has been developed by the CSP's Leadership Group with input from City Council Officers, the Portfolio Holder for Communities and Housing and the Community Overview and Scrutiny Panel.
- 4.2** The plan presents the CSP's evidenced based strategic priorities. These are used as the framework to inform a live work and delivery programme, aimed at reducing crime and anti-social behaviour across the district. This delivery continues to

develop throughout the year and can be influenced and shaped through the City Council's representation on the CSP's Leadership Group.

5. CONTRIBUTION TO THE CARLISLE PLAN PRIORITIES

5.1 "We will work more effectively with partners to achieve the City Council's priorities".

Contact Officer: **Darren Crossley**

Ext: **7004**

Appendices Appendix 1 CSP Partnership Plan
attached to report:

Note: in compliance with section 100d of the Local Government (Access to Information) Act 1985 the report has been prepared in part from the following papers:

- SD 02/14

CORPORATE IMPLICATIONS/RISKS:

Chief Executive's -

Deputy Chief Executive –

Economic Development –

Governance – The CSP Partnership Plan contributes towards the Council's obligations under the Crime & Disorder Act 1998 and is one of the matters reserved to Council pursuant to Article 4 of the Constitution.

Local Environment –

Resources - There are no financial implications of adopting the CSP Partnership Plan for 2014/15. The City Council makes no direct financial contribution to the partnership and therefore any additional support required will need to be met from existing base budgets.

Carlisle and Eden Community Safety Partnership Plan 2014-2015



Vision

By working in partnership, North Cumbria communities will remain safe and reassured

Key Priorities 2014

- Anti-social behaviour
- Violent Crime
- Domestic Abuse and Sexual Violence
- Alcohol and Drug Misuse
- Hate Crime
- Reduce Re-offending

Tackling the Priorities

Anti-Social Behaviour

- Maintain low levels of anti-social behaviour.
- Improving the partnership approach to co-ordinating activities for young people.
- Joining up the partnership approach for environmental aspects.

Violent Crime

- Work with partners to reduce violent crime and assaults.

Domestic Abuse and Sexual Violence

- Actively support the County wide work on Domestic Violence and DV Champions.
- Improve the management of repeat missing vulnerable young people to reduce exploitation.

Alcohol and Drug Misuse

- Support, develop and deliver the County wide Alcohol Strategy to reduce alcohol misuse within the partnership area
- Reduce harm caused by drugs.

Hate Crime

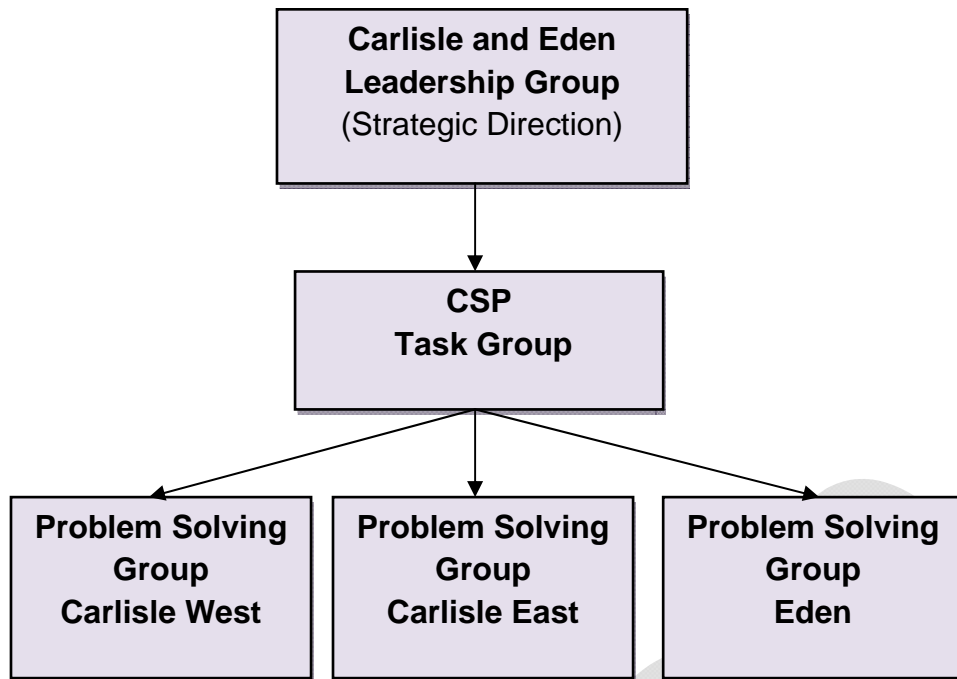
- Support partners to deliver the Hate Crime Action Plan.

Reduce Re-offending

- Continue the Integrated Offender Management programme using a wide range of partners to manage problem individuals effectively in communities.
- Monitor effectiveness of North Cumbria (IOM) Integrated Offender Management scheme.
- Encourage the use of restorative justice through provision of training to a range of public, private and voluntary sector agencies.

Carlisle and Eden Community Safety Partnership Plan 2014-2015

Our Partnership Approach



Performance 2013/ 2014

17% Reduction in Violent Crime
8% Reduction in Anti-Social Behaviour
12% Reduction in Burglary Dwelling
7% Reduction in Drug Possessions
15% Reduction in Thefts from Motor Vehicles

Carlisle and Eden Community Safety Partnership has and continues to be a successful partnership of multi agencies working together to address crime and disorder in North Cumbria. Since its inception, we have worked effectively to contribute to significant and sustained falls in crime and disorder. This plan sets out how, in partnership, we will address the priorities identified to ensure North Cumbria remains a safe place to live, work and study.

The partnership continues to have strong strategic leadership and dedicated and knowledgeable people in our task groups who are committed, prepared and focussed on the priorities for the year ahead.

Mary Robinson, CSP Chair

Successes

Best Bar None Scheme

The scheme has been instrumental in raising standards in bars, pubs and clubs in North Cumbria and has contributed to significant reductions in violent crime.

Taxi Rank Marshals

Deployment of marshals at public ranks helps prevent escalation of serious disorder by early intervention which is reassuring to taxi operators and the public.

Domestic Violence Bodycam Project

CSP funding allowed Cumbria police to purchase of 6 additional bodycams. During the 6 month trial all police officers on 3 Section Carlisle were issued with bodycams that would be worn at all times when on duty and would record their attendance at every domestic violence incident. At the end of the trial period there had been an improved conviction rate particularly for victimless prosecutions.

Operation Roman Candle

Comparisons of ASB figures throughout the operation period show significant reductions in the two priority areas. City West saw reductions of 43% and Carlisle East saw reductions of 54%

Appleby Fair

The co-ordinated approach by partners to Appleby Fair has made it a far safer and more community oriented event.